

**SAN SALVADOR,
 EL SALVADOR**

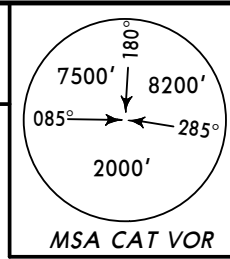
MSLP/SAL
EL SALVADOR INTL

JEPPESEN

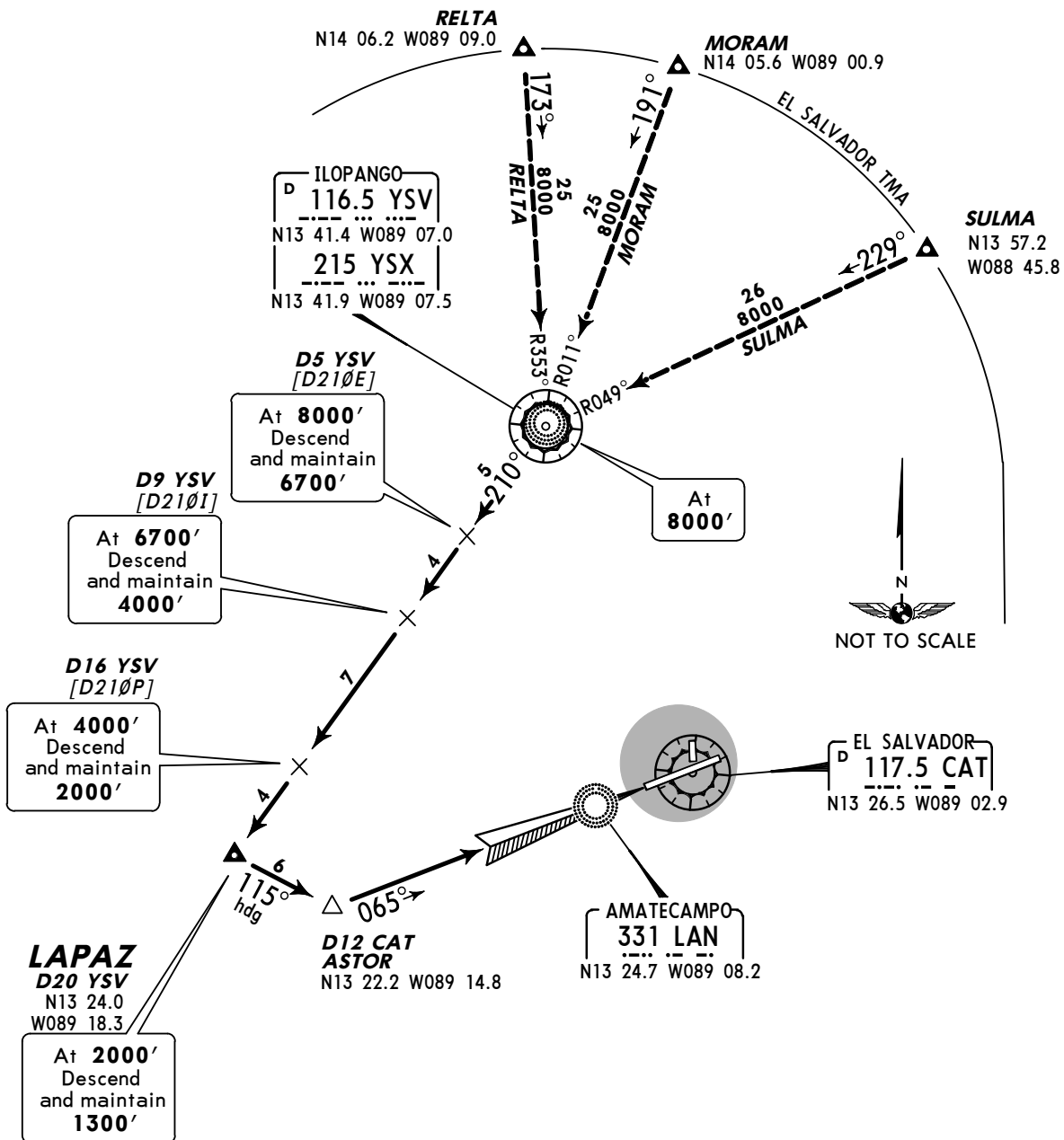
16 JAN 04 **(20-2A)**

ARRIVAL

*ATIS 127.6	Apt Elev 101'	Alt set: IN (MB on req) Trans level: FL200 Trans alt: 19000'
-----------------------	-------------------------	---



LAPAZ ARRIVAL
SPEED: DO NOT EXCEED 250 KT BELOW 10000'
 (RWY 07)



TRANSITIONS		ALTITUDE
MORAM	Inbound to YSV via YSV R-011 (191° course).	Descending to 8000'
RELTA	Inbound to YSV via YSV R-353 (173° course).	
SULMA	Inbound to YSV via YSV R-049 (229° course).	

ROUTING
 Depart YSV via YSV R-210 until LAPAZ/D20 YSV. Turn LEFT to a 115° heading to intercept the localizer at D12 CAT.

MSLP/SAL
EL SALVADOR INTL

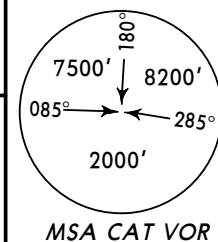
JEPPESEN

16 JAN 04 (20-2B)

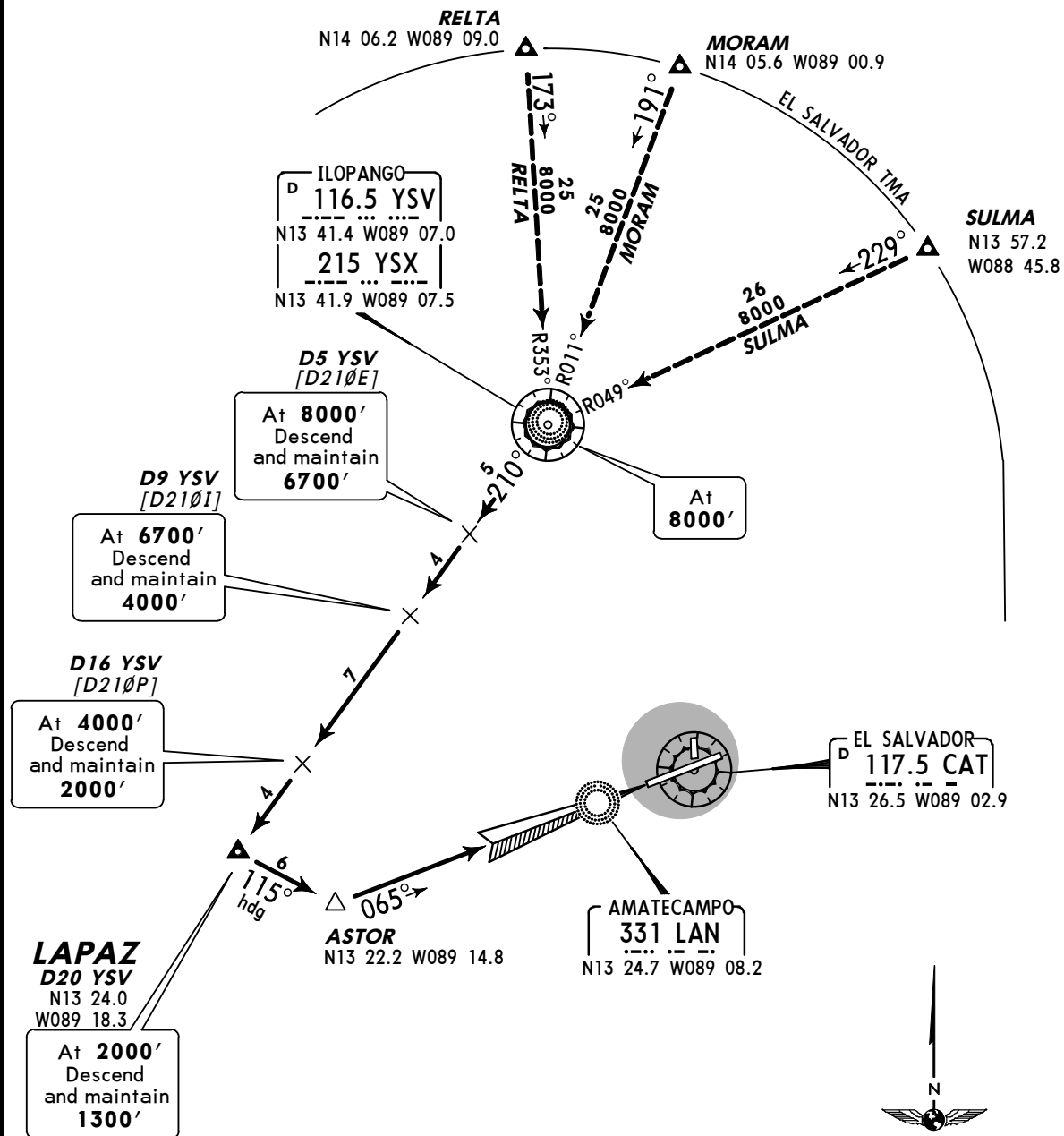
SAN SALVADOR,
EL SALVADOR

ARRIVAL

*ATIS **127.6** Apt Elev **101'** Alt set: IN (MB on req) Trans level: FL 200 Trans alt: 19000'
 This procedure will be used only in emergency cases when CAT is out of service.



LAPAZ 2 ARRIVAL
SPEED: DO NOT EXCEED 250 KT BELOW 10000'
 (RWY 07)



TRANSITIONS		ALTITUDE
MORAM	Inbound to YSV via YSV R-011 (191° course).	Descending to 8000'
RELTA	Inbound to YSV via YSV R-353 (173° course).	
SULMA	Inbound to YSV via YSV R-049 (229° course).	

ROUTING
 Depart YSV via YSV R-210 until LAPAZ/D20 YSV. Turn LEFT to a 115° heading to intercept the localizer at ASTOR.

MSLP/SAL
EL SALVADOR INTL

JEPPESEN

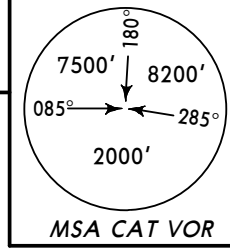
16 JAN 04 **(20-3A)**

SAN SALVADOR,
EL SALVADOR

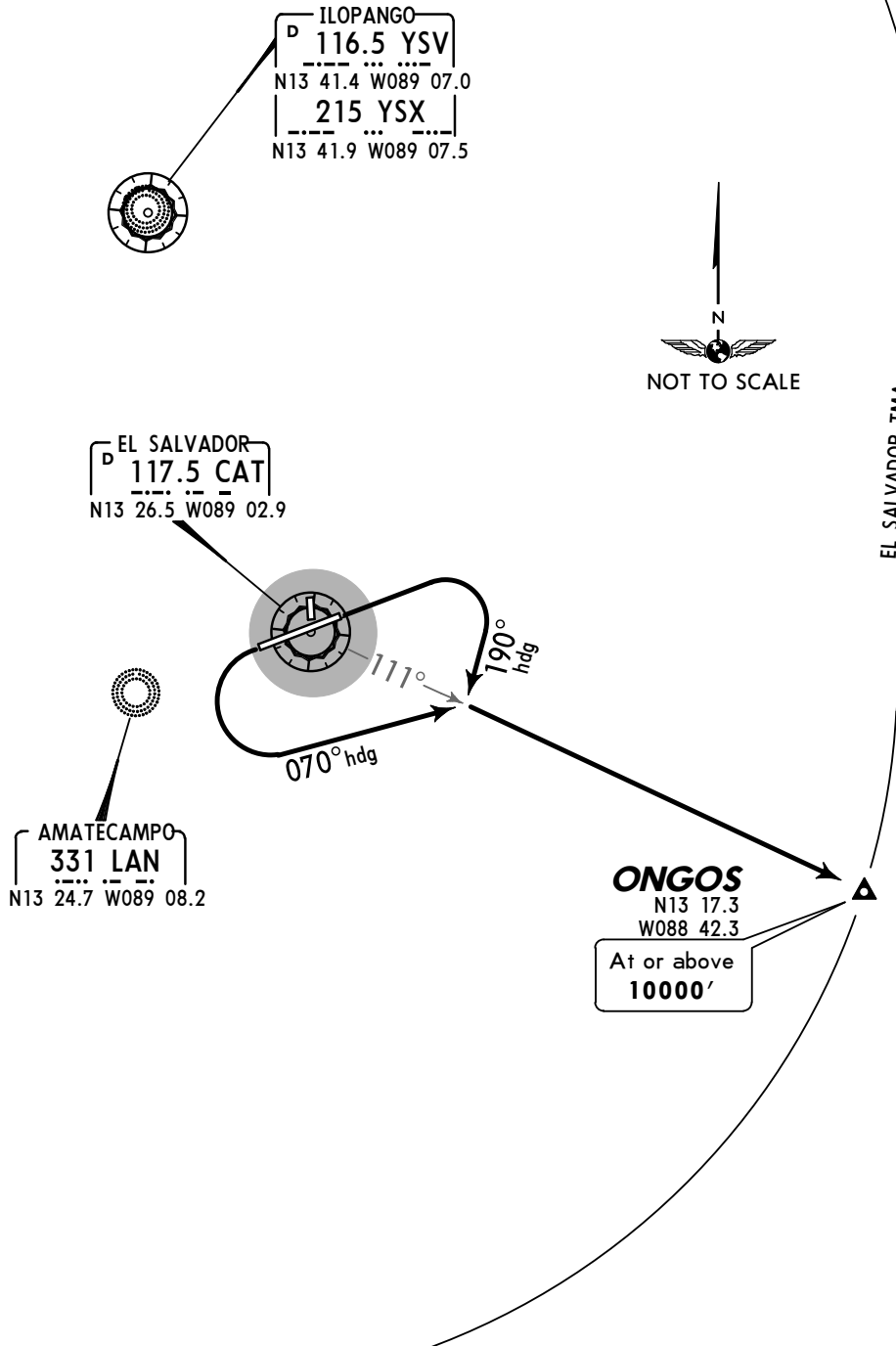
SID

Apt Elev
101'

Trans level: FL200 Trans alt: 19000'



ONGOS DEPARTURE



RWY	INITIAL CLIMB
07	Turn RIGHT to a 190° heading to intercept CAT R-111.
25	Turn LEFT to a 070° heading to intercept CAT R-111.
ROUTING	
Continue on CAT R-111.	

**SAN SALVADOR,
 EL SALVADOR**

MSLP/SAL
EL SALVADOR INTL

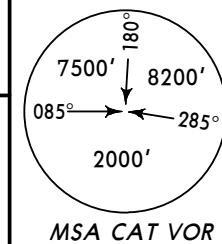
JEPPESEN

16 JAN 04 **(20-3B)**

SID

Apt Elev
101'

Trans level: FL200 Trans alt: 19000'



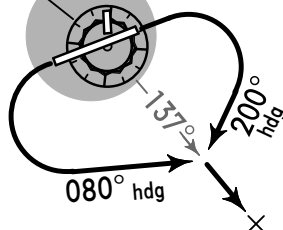
SEDRO DEPARTURE

ILOPANGO
 D 116.5 YSV
 N13 41.4 W089 07.0
 215 YSX
 N13 41.9 W089 07.5



EL SALVADOR
 D 117.5 CAT
 N13 26.5 W089 02.9

AMATECAMPO
 331 LAN
 N13 24.7 W089 08.2



D7 CAT
 [D137G]

[D0690]
 069° D15

LEMPA
 N13 33.1
 W088 42.4

At or above
10000'
 or according to
 ATC instructions

15 DME Arc
LEMPA

EL SALVADOR TMA

[D1370]

SEDRO
 N13 09.2
 W088 48.1

Cross according to
 ATC instructions

Minimum climb gradient required for LEMPA Transition:

Gnd speed-KT	75	100	150	200	250	300
V/V (fpm)	313	417	625	833	1042	1250

RWY	INITIAL CLIMB
07	Turn RIGHT to a 200° heading to intercept CAT R-137.
25	Turn LEFT to a 080° heading to intercept CAT R-137.
ROUTING	
Continue on CAT R-137 to SEDRO.	
LEMPA TRANSITION	
Proceed on the 15 DME Arc to intercept and proceed via CAT R-069 to LEMPA.	

**SAN SALVADOR,
 EL SALVADOR**

MSLP/SAL
EL SALVADOR INTL

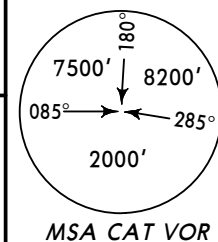
JEPPESEN

16 JAN 04 (20-3C)

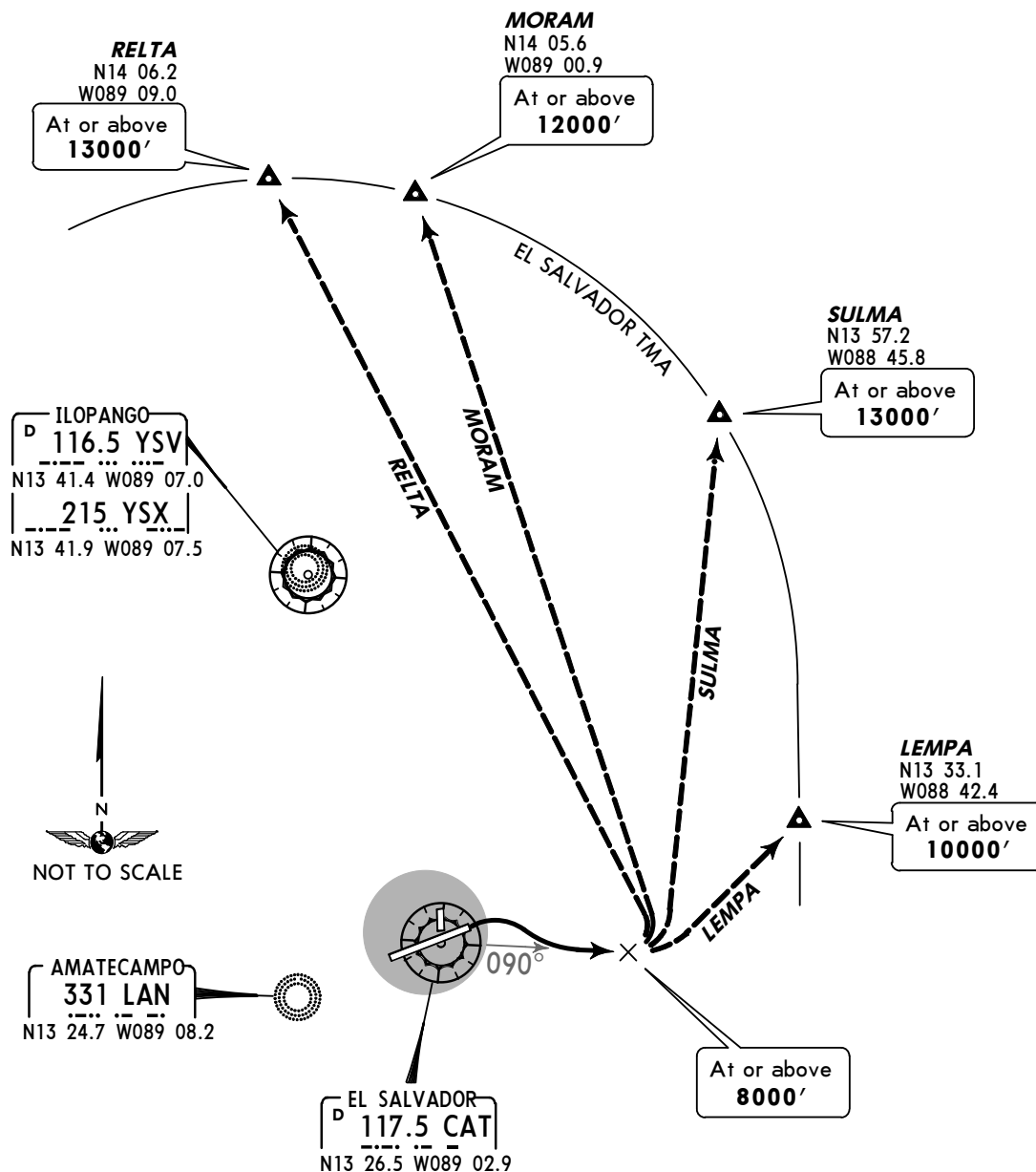
SID

Apt Elev
101'

Trans level: FL200 Trans alt: 19000'
 RADAR required.



JIBOA DEPARTURE
 (RWY 07)



This SID requires a minimum climb gradient of 530' per NM.

Gnd speed-KT	75	100	150	200	250	300
530' per NM	663	883	1325	1767	2208	2650

ROUTING

Turn RIGHT to intercept CAT R-090.

TRANSITIONS

LEMPA	Turn LEFT direct to LEMPA.
MORAM	Turn LEFT direct to MORAM.
RELTA	Turn LEFT direct to RELTA.
SULMA	Turn LEFT direct to SULMA.

MSLP/SAL
EL SALVADOR INTL

JEPPESEN

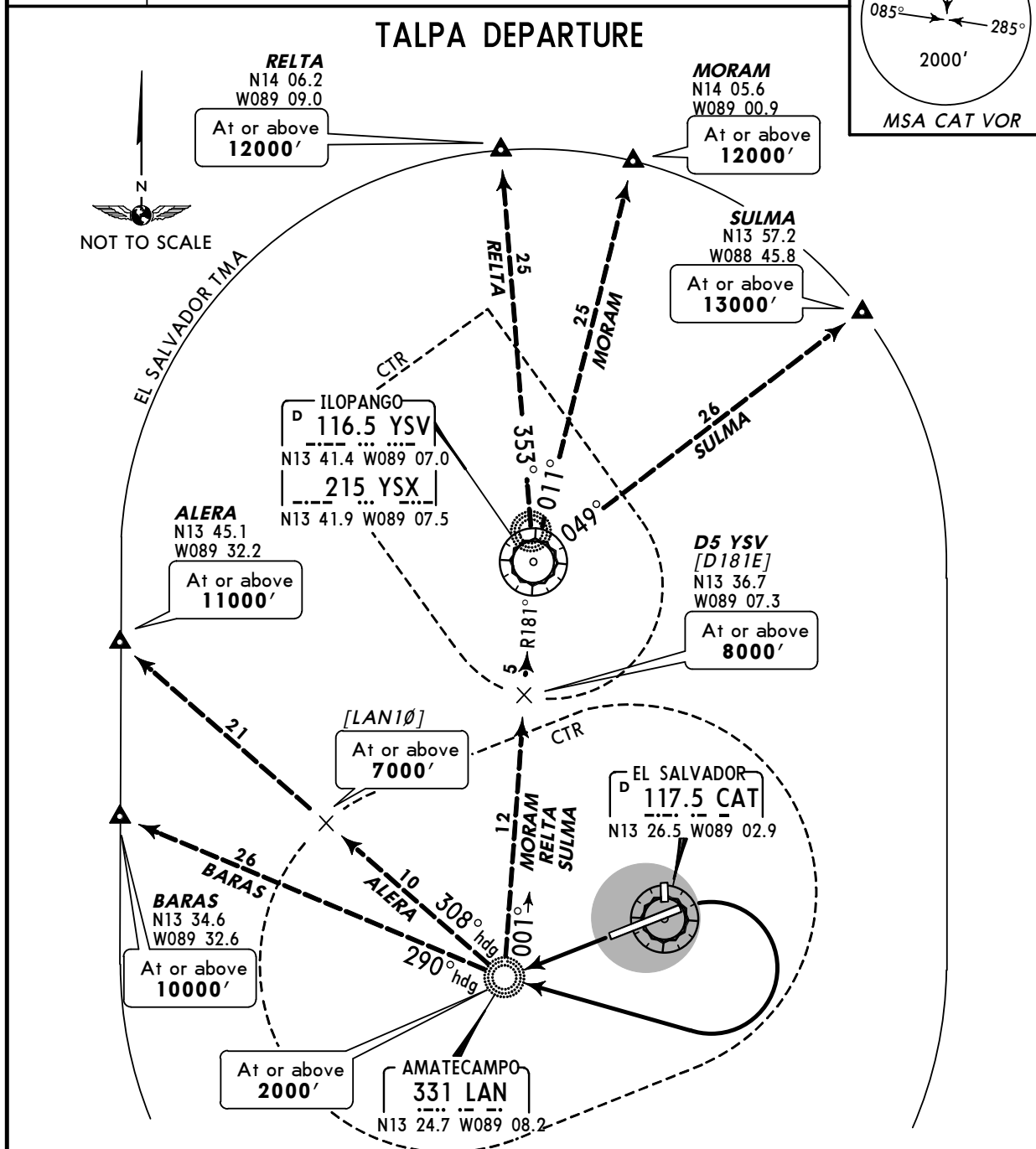
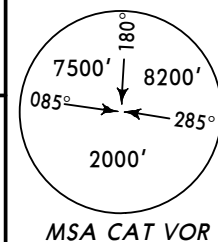
16 JAN 04 **(20-3D)**

SAN SALVADOR,
EL SALVADOR

SID

Apt Elev
 101'

Trans level: FL200 Trans alt: 19000'



This departure requires a minimum climb gradient of 530' per NM.

Gnd speed-KT	75	100	150	200	250	300
530' per NM	663	883	1325	1767	2208	2650

Direct distance from El Salvador Intl to:
 LAN 5 NM

RWY	ROUTING
07	After take-off turn RIGHT and proceed to LAN.
25	After take-off MAINTAIN runway heading to LAN.

TRANSITIONS	
ALERA	Turn RIGHT to a 308° to ALERA.
BARAS	Turn RIGHT to a 290° heading to BARAS.
MORAM	Turn RIGHT to intercept YSV R-181, proceed to YSV and intercept YSV R-011 to MORAM.
RELTA	Turn RIGHT to intercept YSV R-181, proceed to YSV and intercept YSV R-353 to RELTA.
SULMA	Turn RIGHT to intercept YSV R-181, proceed to YSV and intercept YSV R-049 to SULMA.

MSLP/SAL
EL SALVADOR INTL

JEPPESEN

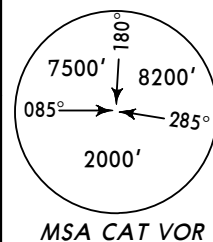
16 JAN 04 (20-3E)

**SAN SALVADOR,
 EL SALVADOR**

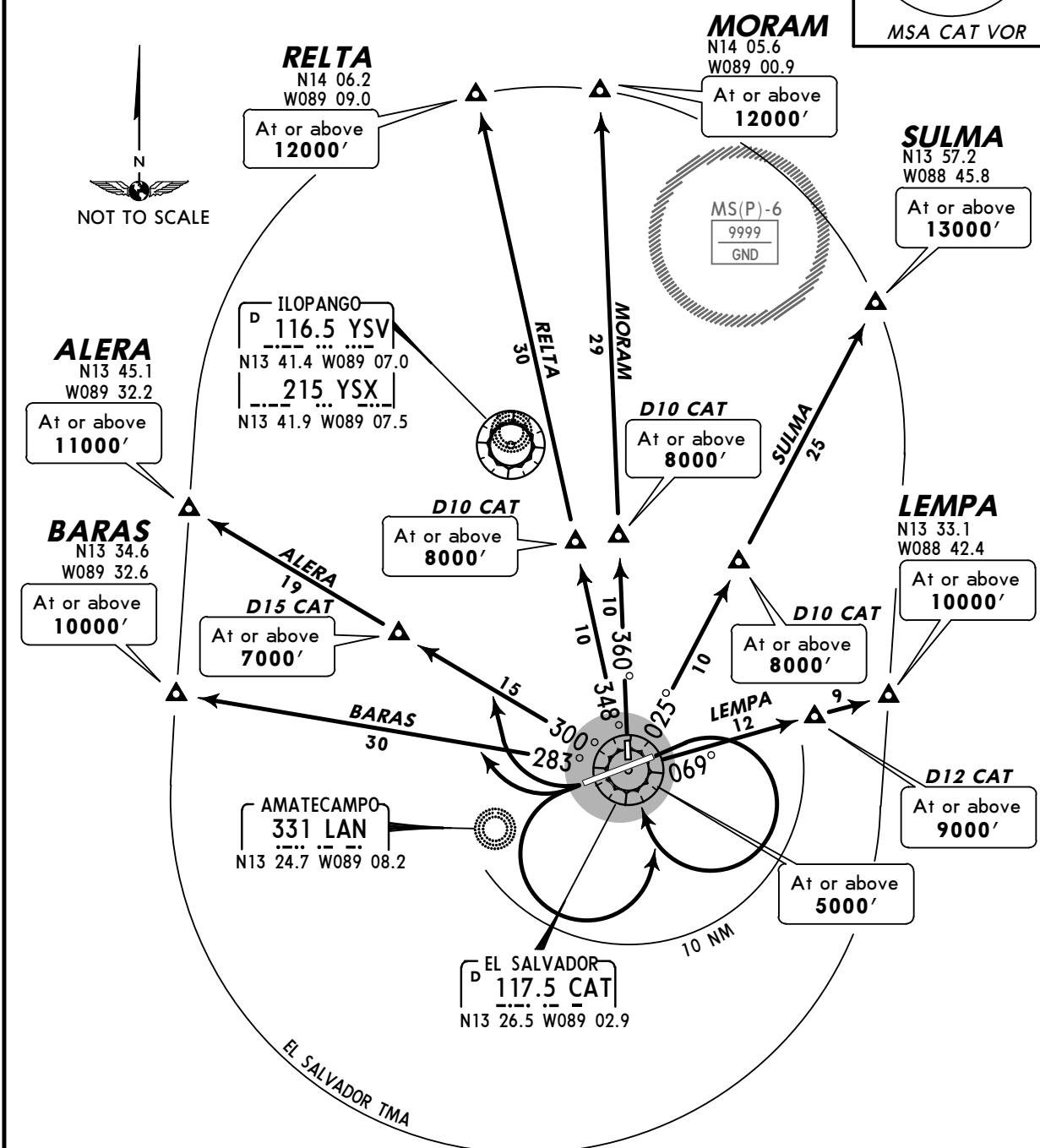
SID

Apt Elev
101'

Trans level: FL200 Trans alt: 19000'
 Procedures are for CAT C & D aircraft only.



ALERA, BARAS, LEMPA, MORAM, RELTA & SULMA DEPARTURES

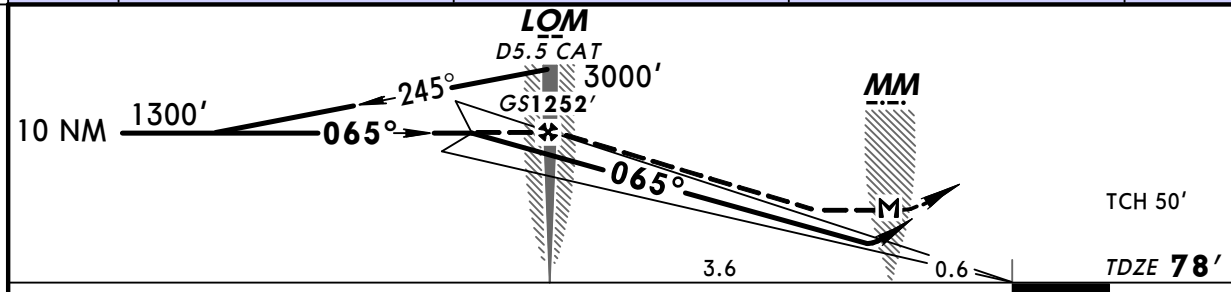
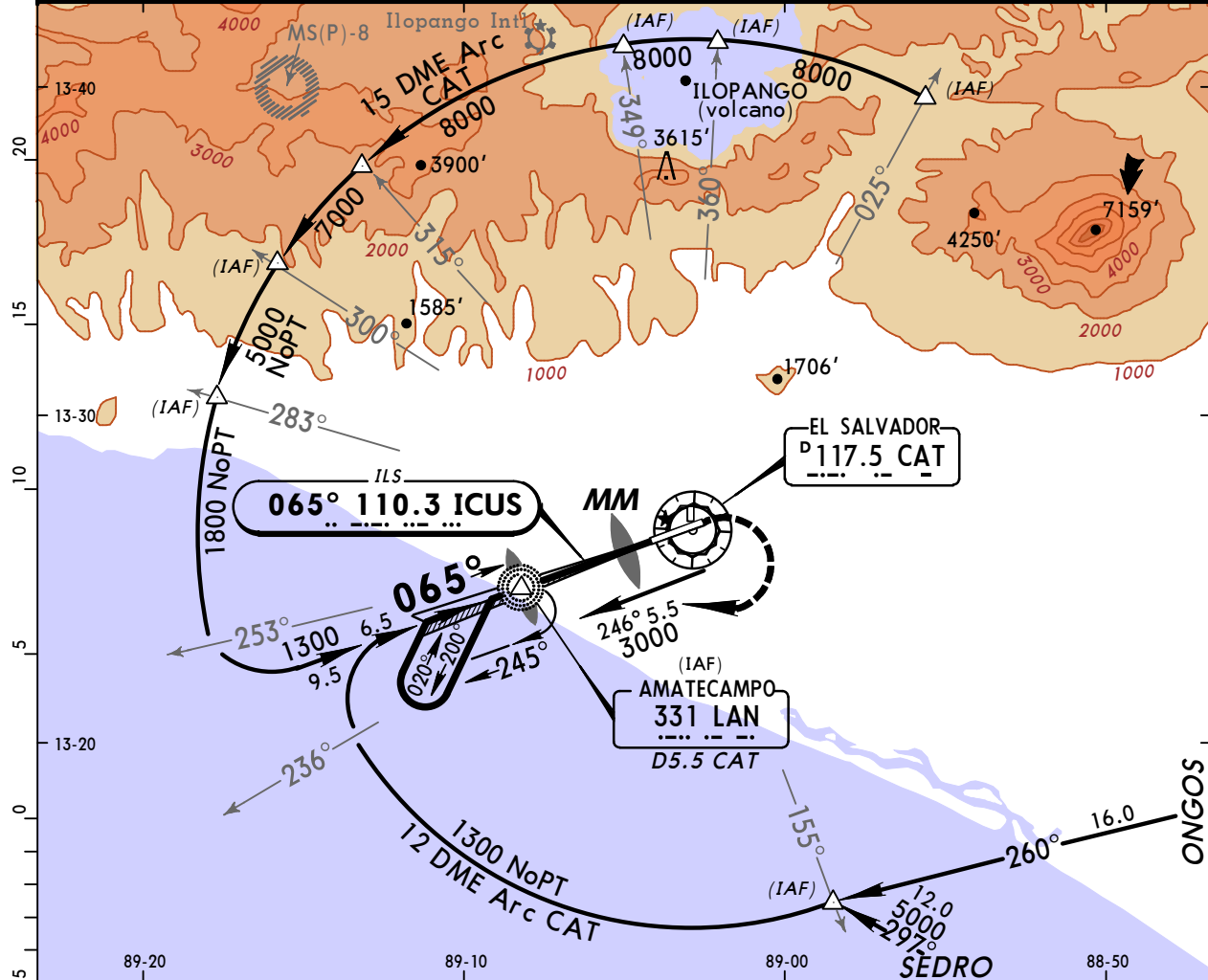


RWY	INITIAL CLIMB
07	Turn RIGHT within 10 NM and proceed to CAT.
25 (ALERA and BARAS)	Turn RIGHT.
25 (ALL OTHERS)	Turn LEFT within 10 NM and proceed to CAT.
DEPARTURES	ROUTING
ALERA	Intercept CAT R-300 to ALERA.
BARAS	Intercept CAT R-283 to BARAS.
LEMPA	Intercept CAT R-069 to LEMPA.
MORAM	Intercept CAT R-360 to MORAM.
RELTA	Intercept CAT R-348 to RELTA.
SULMA	Intercept CAT R-025 to SULMA.

CHANGES: Airport name.

MSLP/SAL **JEPPESEN SAN SALVADOR, EL SALVADOR**
EL SALVADOR INTL 2 NOV 07 **(21-1)** **ILS Rwy 07**

*ATIS 127.6		EL SALVADOR Approach 119.9		EL SALVADOR Tower 118.0		Ground 121.7	
LOC ICUS 110.3	Final Apch Crs 065°	GS LOM 1252' (1174')	ILS DA(H) 278' (200')	Apt Elev 101'		TDZE 78'	
MISSED APCH: Climb to 500' then climbing RIGHT turn to 3000' direct LAN LOM and hold.							
Alt Set: IN (MB on req)			Trans level: FL 200		Trans alt: 19000'		MSA LAN LOM



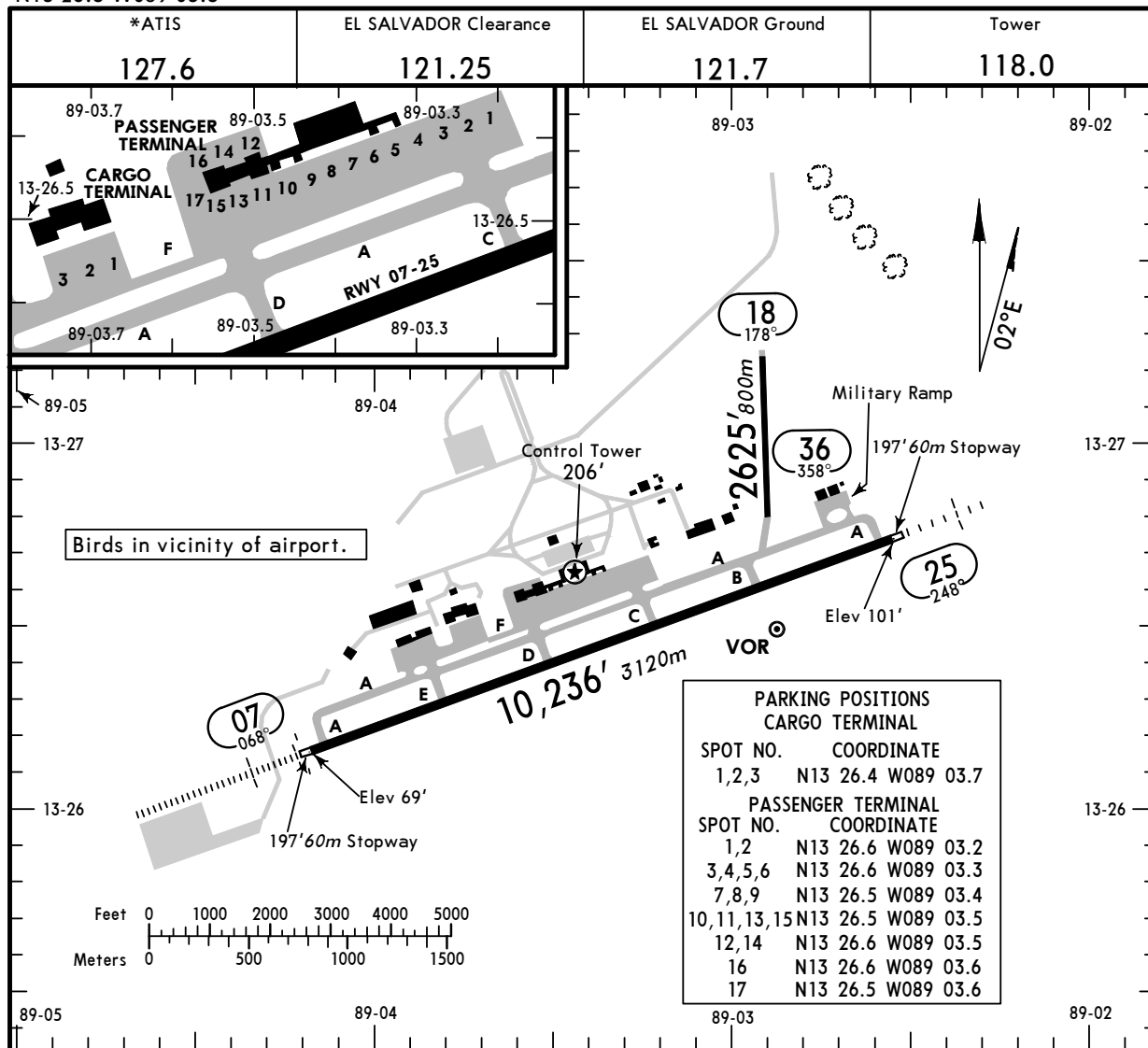
Gnd speed-Kts	70	90	100	120	140	160	ALSF-I PAPI	500'	3000'	D →	LAN 331
Gs	2.50°	315	405	450	539	719		↑	RT		
MAP at MM											

STRAIGHT-IN LANDING RWY07				CEILING REQUIRED		CIRCLE-TO-LAND		
ILS DA(H) 278' (200')		LOC (GS out) MDA(H) 340' (262')						
FULL		ALS out		ALS out		Max Kts		
		CEILING-VISIBILITY				MDA(H)		
						CEIL-VIS		
A						90	520' (419')	500'-1600m
B						120	560' (459')	500'-1600m
C	200' - 800m	200' - 1200m	300' - 800m	300' - 1600m		140	560' (459')	500'-2400m
D			300' - 1200m			165	660' (559')	600'-3200m

MSLP/SAL
 Apt Elev **101'**
 N13 26.5 W089 03.5

JEPPESEN SAN SALVADOR, EL SALVADOR
 EL SALVADOR INTL

2 NOV 07 (21-1)



ADDITIONAL RUNWAY INFORMATION

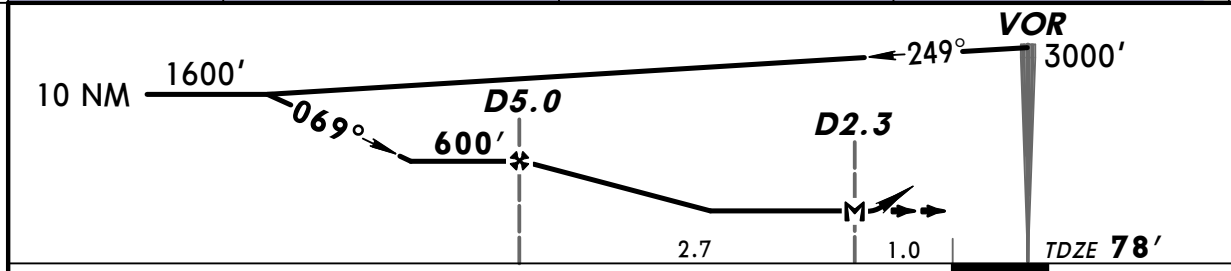
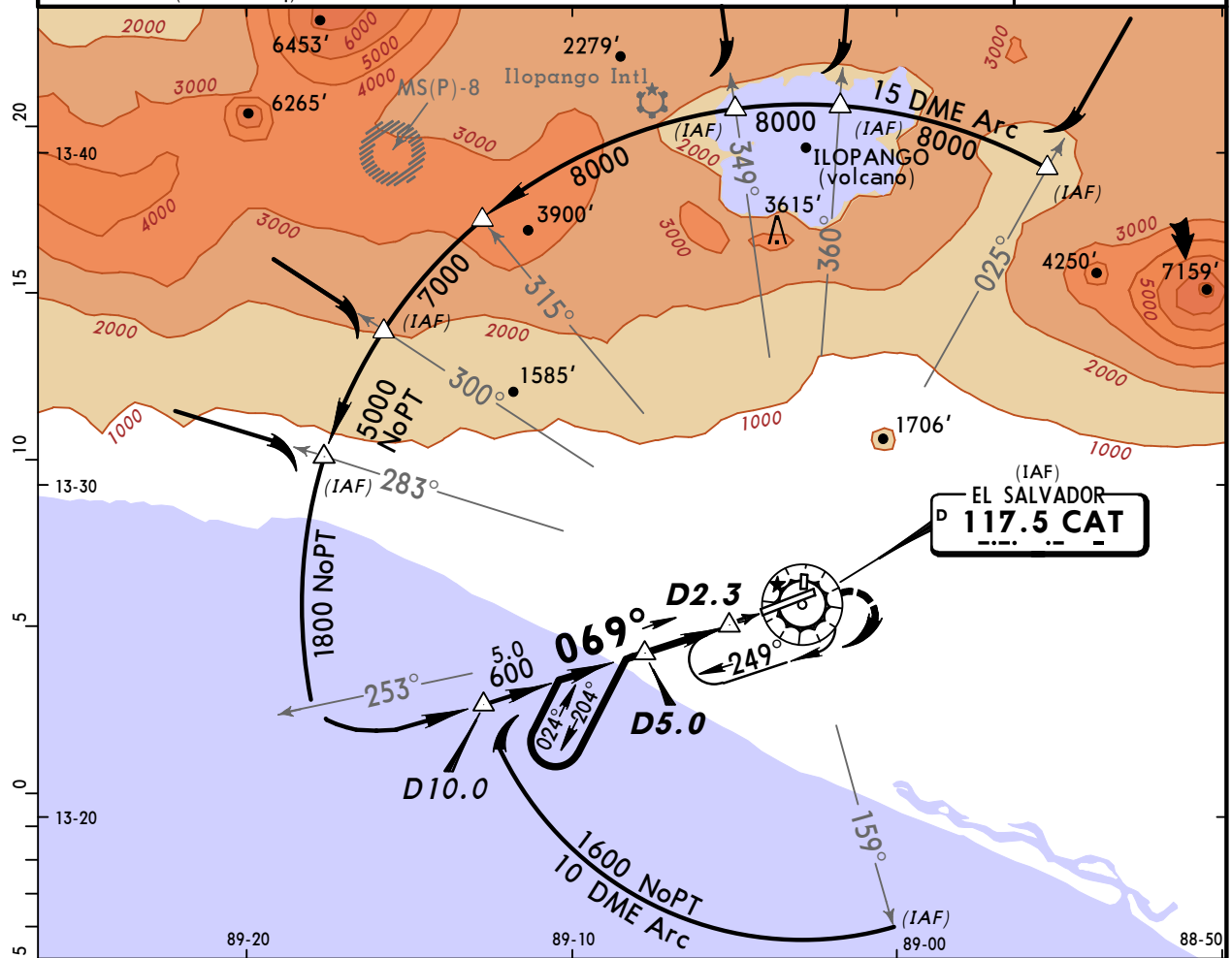
RWY				USABLE LENGTHS		TAKE-OFF	WIDTH
	HIRL	ALSF-I	PAPI-L (angle)	Threshold	Glide Slope		
07	HIRL	ALSF-I	PAPI-L (angle 2.5°)	RVR	9107'	2776m	148'
25	HIRL	SSALS	PAPI-L (angle 3.0°)				45m

TAKE-OFF

	AIR CARRIER (JAA)		AIR CARRIER (FAR 121)	
	LVP must be in Force All Rwys RCLM (Day only) or RL	All Rwys RCLM (Day only) or RL	All Rwys	Adequate Vis Ref
A			2 Eng	RVR 400m
B	RVR 250m	RVR 400m	3 & 4 Eng	
C				
D	RVR 300m			

MSLP/SAL **JEPPESEN SAN SALVADOR, EL SALVADOR**
EL SALVADOR INTL 16 JAN 04 **(23-1)** **VOR DME Rwy 07**

*ATIS 127.6		EL SALVADOR Approach 119.9		EL SALVADOR Tower 118.0		Ground 121.7
VOR CAT 117.5	Final Apch Crs 069°	Minimum Alt D5.0 600' (522')	MDA(H) 360' (282')	Apt Elev 101'	TDZE 78'	
MISSED APCH: Climb direct CAT VOR then turn RIGHT climbing to 3000' to CAT VOR and hold.						
Alt Set: IN (MB on req)		Trans level: FL 200		Trans alt: 19000'		



MAP at D2.3					ALSF-I	↑	→	CAT 117.5
					PAPI			

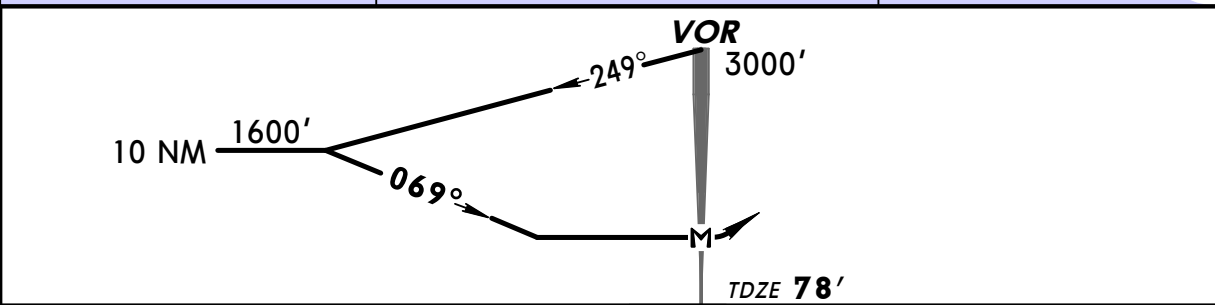
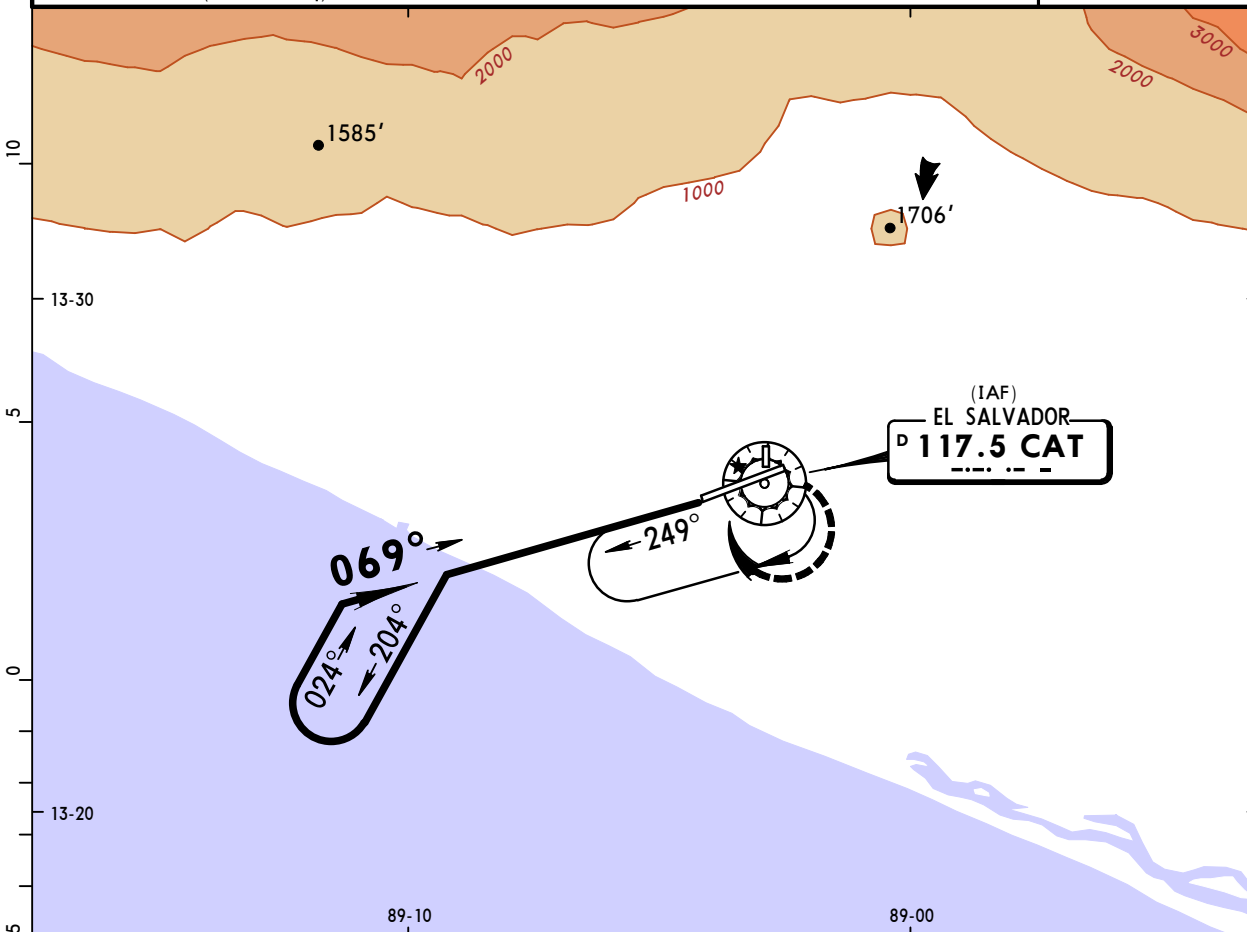
STRAIGHT-IN LANDING RWY 07 CEILING REQUIRED			CIRCLE-TO-LAND	
MDA(H) 360' (282')				
	CEILING-VISIBILITY	ALS out	Max Kts	MDA(H) CEIL-VIS
A			90	520' (419') 500' - 1600m
B	300' - 800m	300' - 1600m	120	560' (459') 500' - 1600m
C			140	560' (459') 500' - 2400m
D	300' - 1600m		165	660' (559') 600' - 3200m

MSLP/SAL
EL SALVADOR INTL

JEPPESEN SAN SALVADOR, EL SALVADOR
 16 JAN 04 **(23-2)**

VOR Rwy 07

*ATIS 127.6		EL SALVADOR Approach 119.9		EL SALVADOR Tower 118.0		Ground 121.7	
VOR CAT 117.5	Final Apch Crs 069°	No FAF		MDA(H) 520' (442')	Apt Elev 101'	TDZE 78'	
MISSED APCH: Climbing RIGHT turn to 3000' direct CAT VOR and hold.							
Alt Set: IN (MB on req)		Trans level: FL 200		Trans alt: 19000'		MSA CAT VOR	

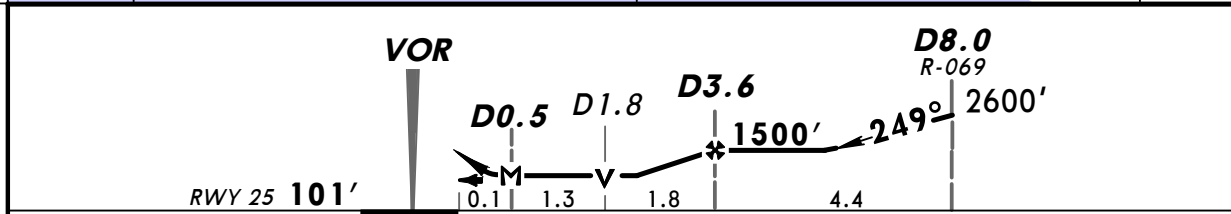
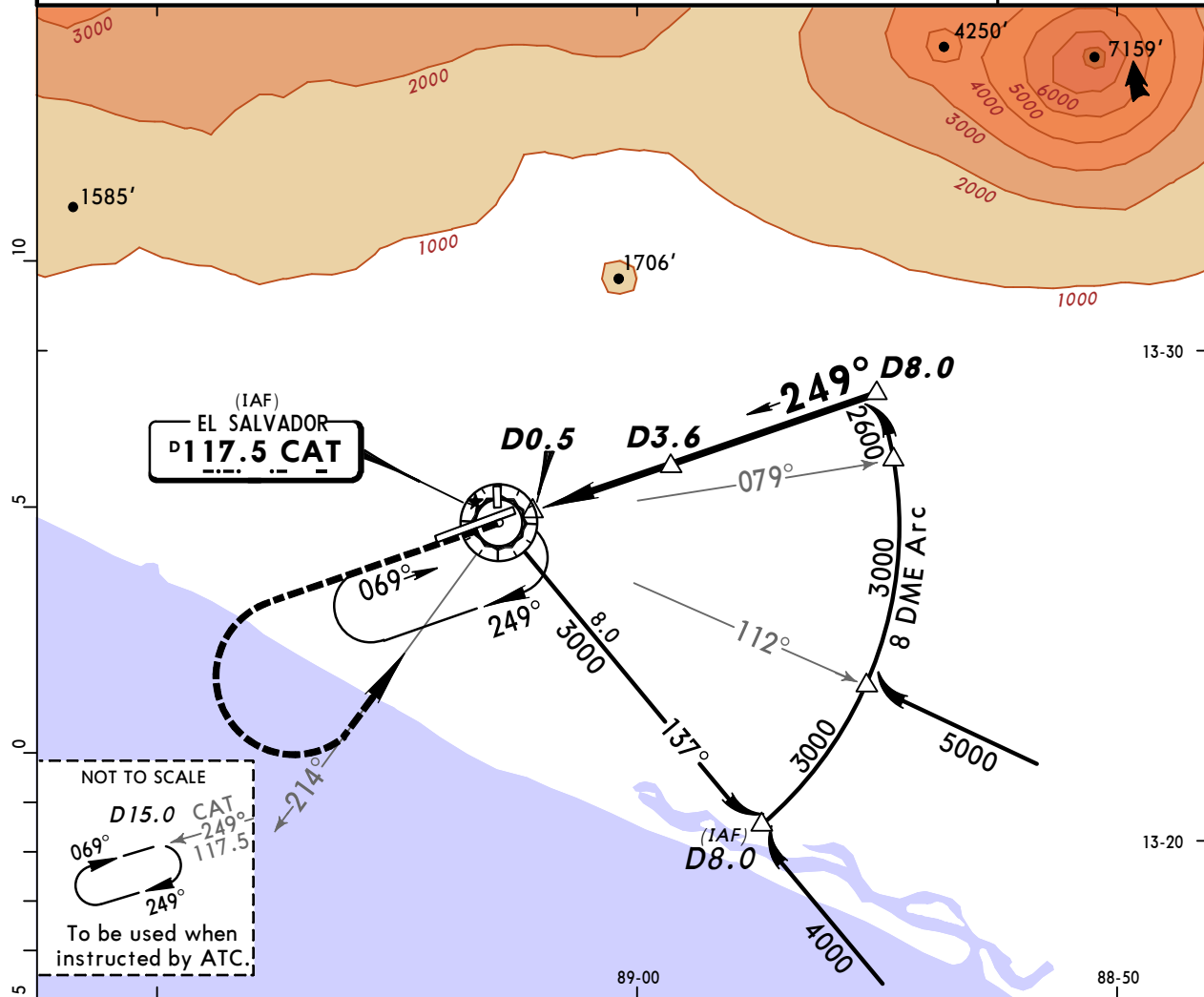


					ALSF-I	3000'		CAT
					PAPI			117.5
MAP at VOR								

STRAIGHT-IN LANDING RWY07			CIRCLE-TO-LAND	
MDA(H) 520' (442')			Max Kts	MDA(H)
A	800m	1600m	90	520' (419')- 1.6 km
B			120	560' (459')- 1.6 km
C	1200m	2000m	140	560' (459')- 2.4 km
D	1600m	2400m	165	660' (559')- 3.2 km

MSLP/SAL **JEPPESEN SAN SALVADOR, EL SALVADOR**
EL SALVADOR INTL 16 JAN 04 (23-3) **VOR DME Rwy 25**

*ATIS 127.6		EL SALVADOR Approach 119.9		EL SALVADOR Tower 118.0		Ground 121.7	
VOR CAT 117.5	Final Apch Crs 249°	Minimum Alt D3.6 1500' (1399')	MDA(H) 460' (359')	Apt Elev 101' RWY 25 101'			
MISSED APCH: Climb on runway heading to 1500', then turn LEFT climbing to 3000' to CAT VOR inbound via CAT R-214 and hold.						MSA CAT VOR	
Alt Set: IN (MB on req)		Trans level: FL 200		Trans alt: 19000'			



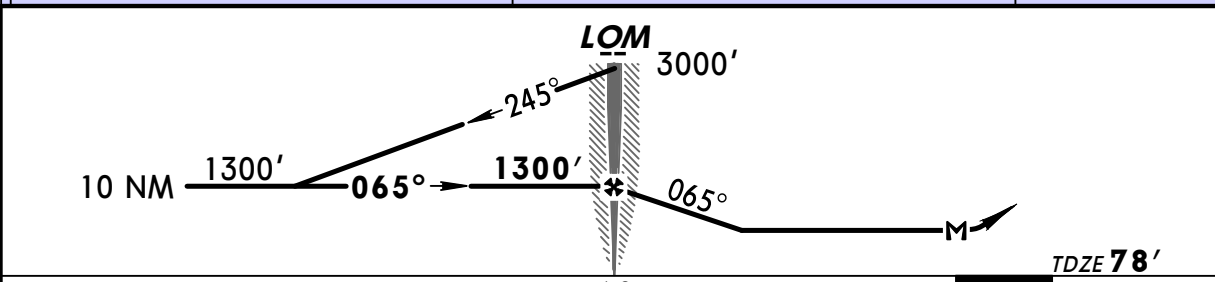
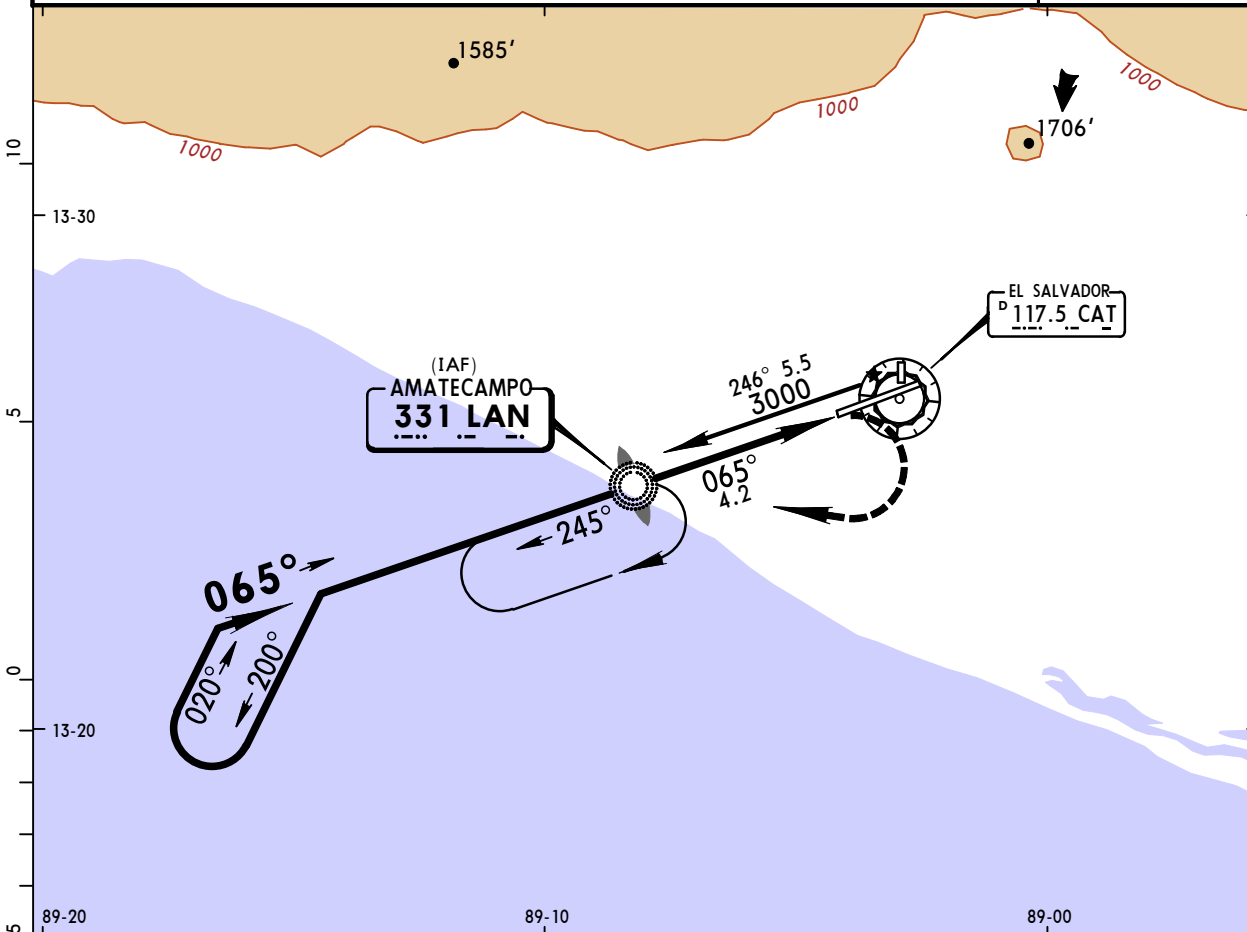
MAP at D0.5	SSALS	1500'	3000'	CAT	CAT
	PAPI	↑	←	via 117.5	117.5
			LT	R-214	

STRAIGHT-IN LANDING RWY 25		CEILING REQUIRED		CIRCLE-TO-LAND	
MDA(H) 460' (359')					
ALS out		Max Kts	MDA(H)	CEIL-VIS	
A	CEILING-VISIBILITY	90	520' (419')	500' - 1600m	
B		120	560' (459')	500' - 1600m	
C	400' - 1600m	140	560' (459')	500' - 2400m	
D		165	660' (559')	600' - 3200m	

MSLP/SAL
EL SALVADOR INTL

JEPPESEN SAN SALVADOR, EL SALVADOR
 16 JAN 04 (26-1) **NDB Rwy 07**

*ATIS 127.6		EL SALVADOR Approach 119.9		EL SALVADOR Tower 118.0		Ground 121.7	
LOM LAN 331	Final Apch Crs 065°	Minimum Alt LOM 1300' (1222')	MDA(H) 400' (322')	Apt Elev 101' TDZE 78'			
MISSED APCH: Climbing RIGHT turn to 3000' direct to LAN LOM and hold.							MSA LAN LOM
Alt Set: IN (MB on req)		Trans level: FL 200		Trans alt: 19000'			



Gnd speed-Kts	70	90	100	120	140	160	ALSIF-1 PAPI	3000' RT	LAN 331
LOM to MAP	4.2	3:36	2:48	2:31	2:06	1:48			

STRAIGHT-IN LANDING RWY 07		CIRCLE-TO-LAND	
MDA(H) 400' (322')		MDA(H)	
	ALS out	Max Kts	
A		90	520' (419') - 1.6 km
B	1200m	120	560' (459') - 1.6 km
C		140	560' (459') - 2.4 km
D	1600m	165	660' (559') - 3.2 km