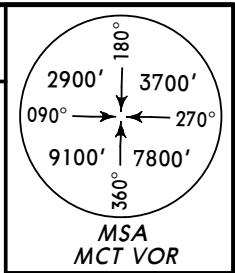
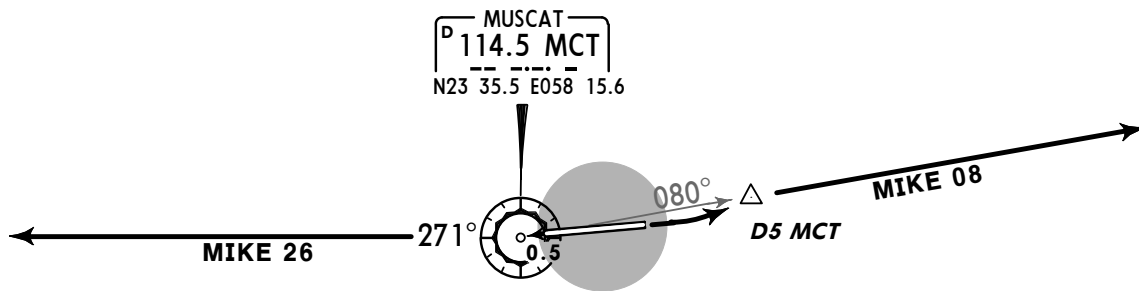


MUSCAT Radar (APP) 121.2	Apt Elev 48'	Trans level: FL150 Trans alt: 13000'
------------------------------------	------------------------	---



**MIKE 08, MIKE 26
RWYS 08, 26 DEPARTURES**



LOST COMMS ▼ LOST COMMS ▼ LOST COMMS ▼ LOST COMMS ▼ LOST COMMS ▼ LOST COMMS ▼ LOST COMMS ▼ LOST COMMS ▼ LOST COMMS ▼

MIKE 08

▶ Follow SID, maintain **3000'** or last assigned Radar instructions to D20 MCT. Then

- **R 462** track **T 500** direct to VUSET;
- **G 216** track direct to ITILA, then **G 216**;
- Traffic entering MUMBAI FIR via RASKI, PARAR and TOTOX continue on MCT R-080 until passing **5000'**, then track direct MUSRU planned route;

all routes climb to **FL230** or planned level, if lower, or last assigned level, if higher, enroute destination.

Other routes turn LEFT to MCT, cross at **12000'**, then climb to **FL230** or planned level. If lower (westbound) or **FL230** or planned level, if lower (eastbound) or last assigned level, if higher, enroute destination.

MIKE 26

▶ Follow SID, maintain **3000'** or last assigned Radar instructions to D20 MCT. Then

- **P 899** (westbound) traffic - track via **L 764** to IVETO, then PAXIM to ITRAX;
- **P 574, M 762** or **B 540** traffic via **T 508**;

both routes climb to **FL200** or planned level, if lower, or last assigned level, if higher, enroute destination.

Other routes turn RIGHT to MCT, cross at **12000'**, then climb to **FL200** or planned level. If lower (westbound) or **FL230** or planned level, if lower (eastbound) or last assigned level, if higher, enroute destination.

Lost Comms aircraft observed on Radar to be flying other than this procedure will be assumed to be in an emergency situation and will have priority for landing at Muscat.

▲ LOST COMMS ▲ LOST COMMS ▲ LOST COMMS ▲ LOST COMMS ▲ LOST COMMS ▲ LOST COMMS ▲ LOST COMMS ▲ LOST COMMS ▲ LOST COMMS ▲

SID	RWY	ROUTING
MIKE 08	08	Turn LEFT before D5 MCT, intercept MCT R-080, climb to 3000' . Further climb and vectoring by MUSCAT Radar.
MIKE 26	26	Climb to MCT, turn RIGHT, MCT R-271, climb to 3000' . Further climb and vectoring by MUSCAT Radar.

OOMS/MCT

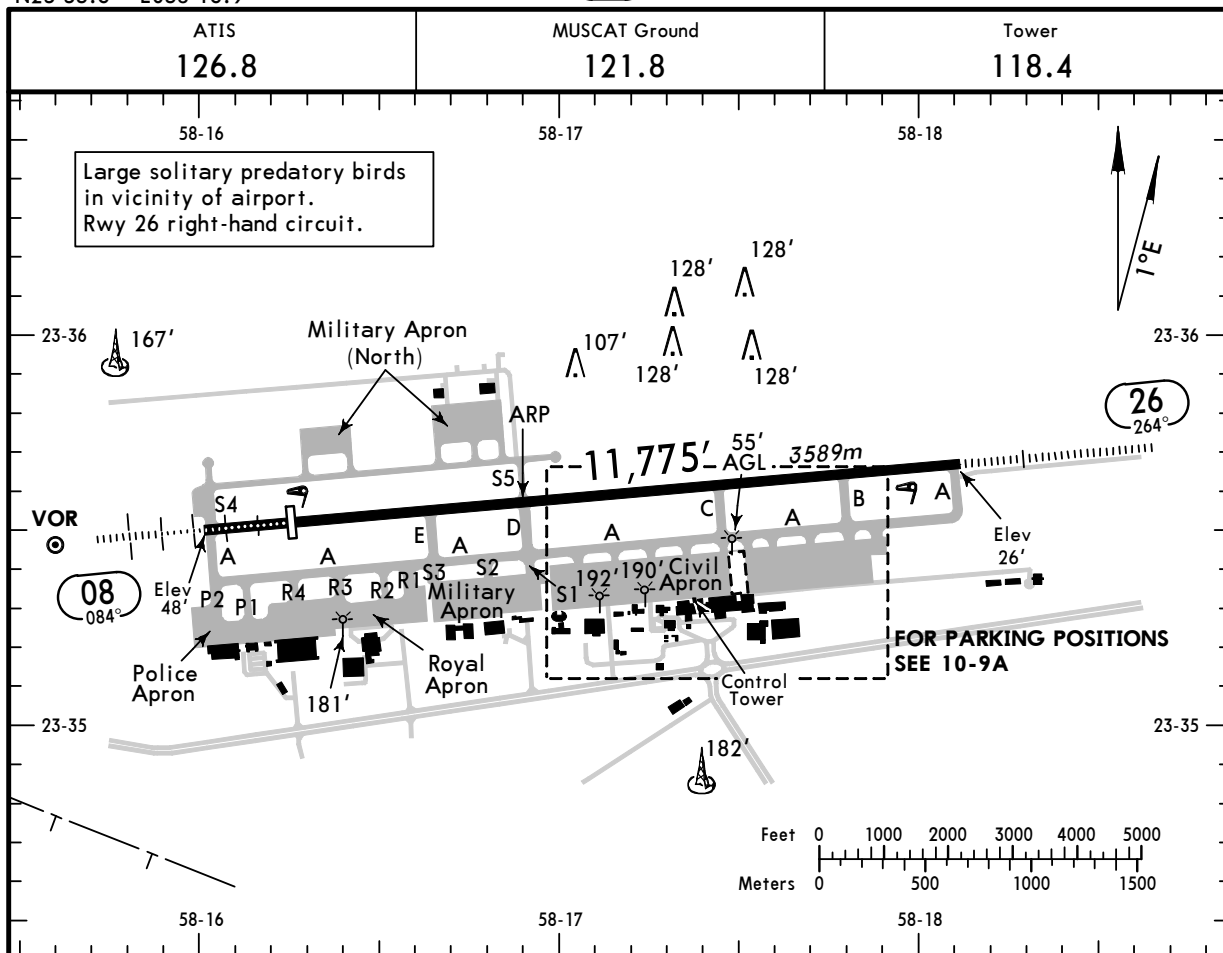
Apt Elev 48'
N23 35.6 E058 16.9

JEPPESEN

18 JAN 08 (10-9) Eff 2 Feb

MUSCAT, OMAN

MUSCAT INTL



ADDITIONAL RUNWAY INFORMATION

RWY	USABLE LENGTHS	LANDING BEYOND		TAKE-OFF	WIDTH
		Threshold	Glide Slope		
08 26	HIRL HIALS PAPI-L (angle 3.0°)	10,400' 3170m	9369' 2856m		148' 45m
			10,742' 3274m		

NOISE ABATEMENT PROCEDURE

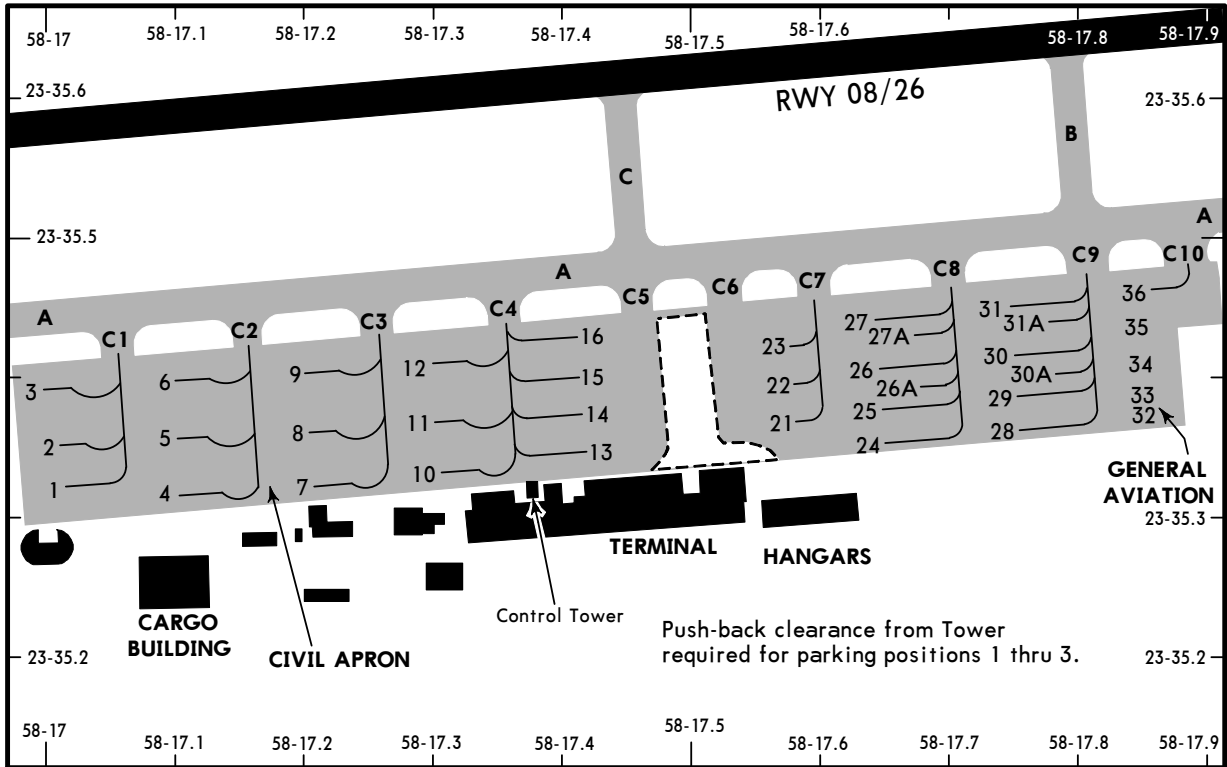
All aircraft departing to the Northwest are required to avoid overflying OO(R)-7. Approach/Radar will issue appropriate headings to avoid this area.

TAKE-OFF

AIR CARRIER (JAA)

Rwys 08/26

	LVP must be in force RCLM (DAY only) or RL	RCLM (DAY only) or RL
A		
B	250m	400m
C		
D	300m	



INS COORDINATES

STAND No.	COORDINATES	STAND No.	COORDINATES
1	N23 35.3 E058 17.0	21 thru 27A	N23 35.4 E058 17.6
2, 3	N23 35.4 E058 17.0	28 thru 30	N23 35.4 E058 17.7
4	N23 35.3 E058 17.1	30A	N23 35.4 E058 17.8
5, 6	N23 35.4 E058 17.1	31	N23 35.4 E058 17.7
7	N23 35.3 E058 17.2	31A thru 35	N23 35.4 E058 17.8
8, 9	N23 35.4 E058 17.2	36	N23 35.5 E058 17.8
10	N23 35.3 E058 17.3		
11, 12	N23 35.4 E058 17.3		
13	N23 35.3 E058 17.4		
14 thru 16	N23 35.4 E058 17.4		

STRAIGHT-IN RWY		A	B	C	D
08	ILS	248' (200')	248' (200')	257' (209')	275' (227')
		R550m	R550m	R600m	R600m
	<i>ALS out</i>	R1000m	R1000m	R1000m	R1000m
	LOC	420' (372')	420' (372')	420' (372')	420' (372')
		R900m	R1000m	R1000m	R1400m
	<i>ALS out</i>	R1500m	R1500m	R1800m	R2000m
26	VOR DME	450' (402')	450' (402')	450' (402')	450' (402')
		R900m	R1000m	R1000m	R1400m
	<i>ALS out</i>	R1500m	R1500m	R1800m	R2000m
	ILS	226' (200')	233' (207')	243' (217')	253' (227')
		R550m	R600m	R600m	R600m
	<i>ALS out</i>	R1000m	R1000m	R1000m	R1000m
26	LOC	440' (414')	440' (414')	440' (414')	440' (414')
		R900m	R1000m	R1000m	R1400m
	<i>ALS out</i>	R1500m	R1500m	R1800m	R2000m
	VOR DME	400' (374')	400' (374')	400' (374')	400' (374')
		R900m	R1000m	R1000m	R1400m
	<i>ALS out</i>	R1500m	R1500m	R1800m	R2000m

CIRCLE-TO-LAND	100 KT	135 KT	180 KT	205 KT
Not authorized South of rwy 08/26	490' (442')	550' (502')	660' (612')	750' (702')
	V1500m	V1600m	V2400m	V3600m

TAKE-OFF RWY 08, 26

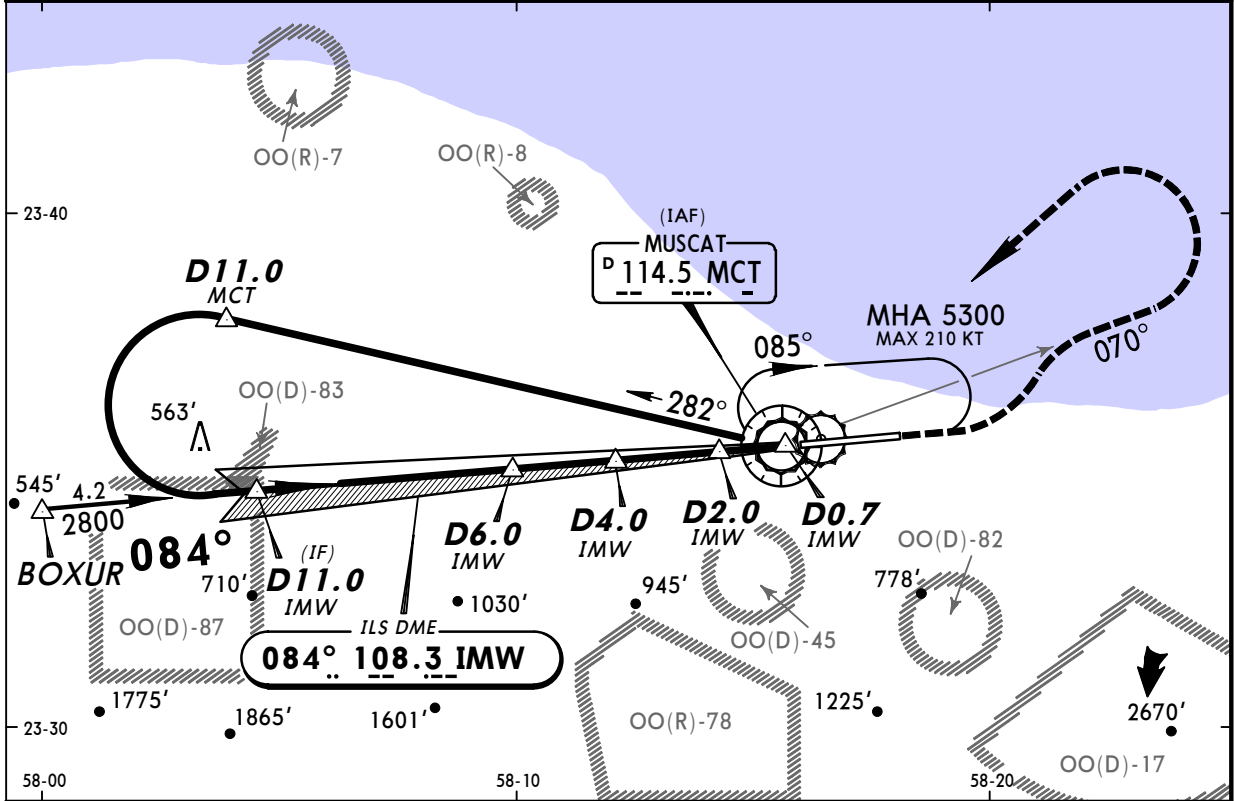
LVP must be in Force			
	RCLM (DAY only) or RL	RCLM (DAY only) or RL	NIL (DAY only)
A			
B	250m	400m	500m
C			
D	300m		

OOMS/MCT
MUSCAT INTL

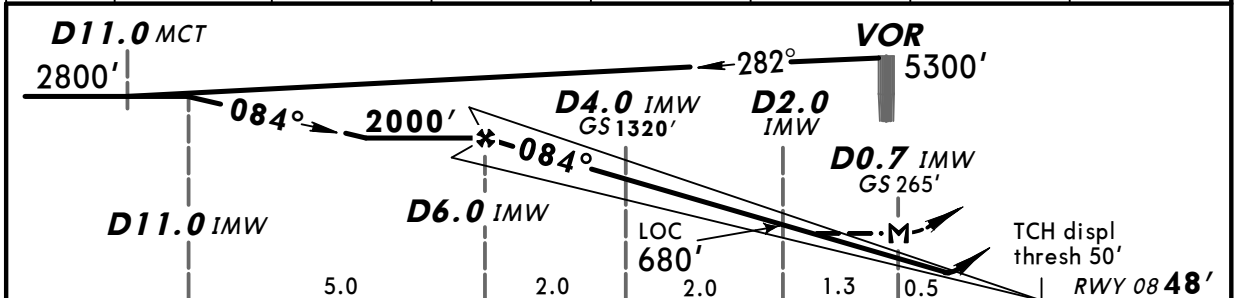
MUSCAT, OMAN
VOR DME ILS Rwy 08

BRIEFING STRIP™

ATIS 126.8		MUSCAT Approach (R) 121.2		MUSCAT Tower 118.4		Ground 121.8	
LOC IMW 108.3	Final Apch Crs 084°	GS D4.0 IMW 1320' (1272')	ILS DA(H) Refer to Minimums	Apt Elev 48' RWY 48'			
MISSED APCH: Climb STRAIGHT AHEAD to 1000', then turn LEFT climbing via R-070 to 4000', then climbing turn LEFT to 5300' returning to VOR and hold, or as directed.							MSA MCT VOR
Alt Set: hPa		Rwy Elev: 2hPa		Trans level: FL 150		Trans alt: 13000'	



LOC	IMW DME	6.0	5.0	4.0	3.0	2.0	1.0
(GS out)	ALTITUDE	2000'	1660'	1330'	1010'	690'	370'



Gnd speed-Kts	70	90	100	120	140	160	HIALS PAPI 1000' 4000' MCT via 114.5 LT R-070
ILS GS 3.00° or	377	485	539	647	755	862	
LOC Descent Gradient 5.2%							
MAP at D0.7 IMW							

STRAIGHT-IN LANDING RWY 08 ILS LOC (GS out) DA(H) C: 257' (209') D: 275' (227') MDA(H) 420' (372')				CIRCLE-TO-LAND Not authorized South of rwy 08/26			
FULL		ALS out		ALS out		Max Kts	MDA(H)
A	SEE 11-2					A	SEE 11-2
B	SEE 11-2					B	SEE 11-2
C	800m	1200m	800m	1600m	180	660' (612')	2800m
D	800m	1200m	1200m	2000m	205	740' (692')	3600m

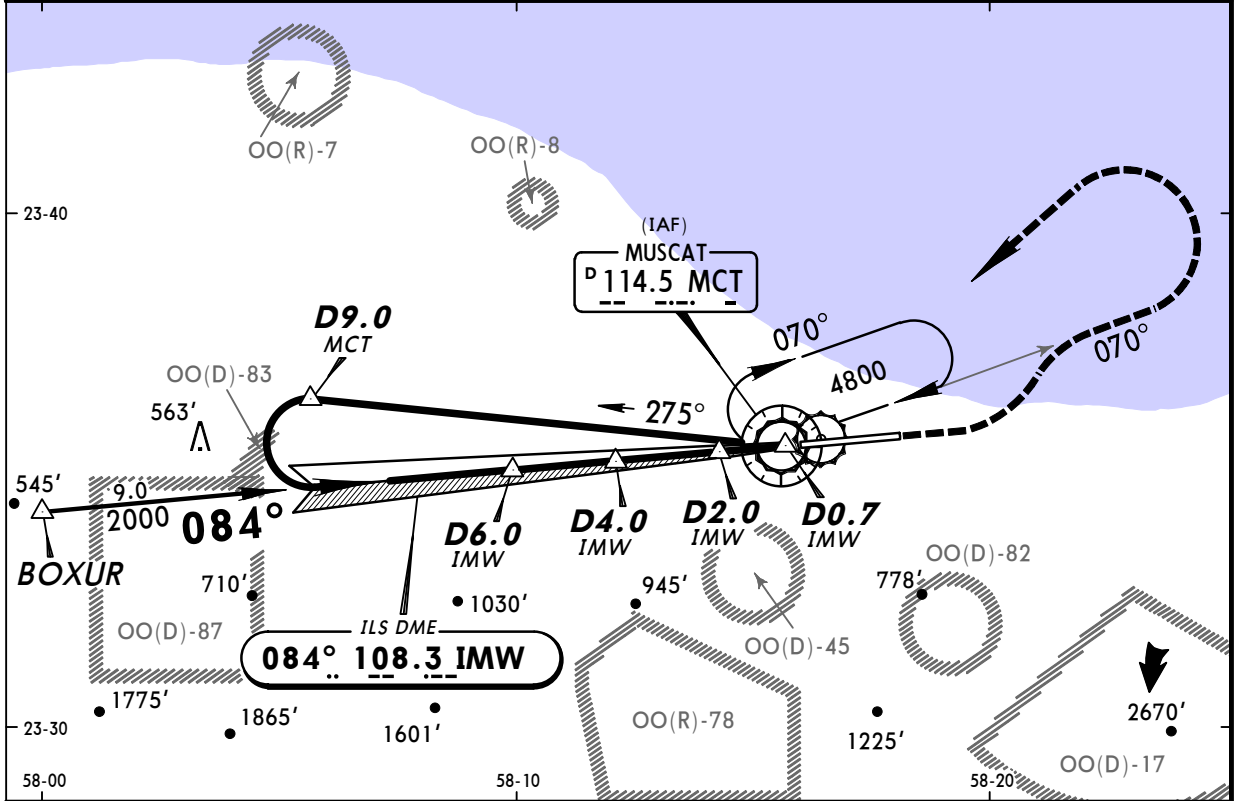
PANS OPS 4

OOMS/MCT
MUSCAT INTL

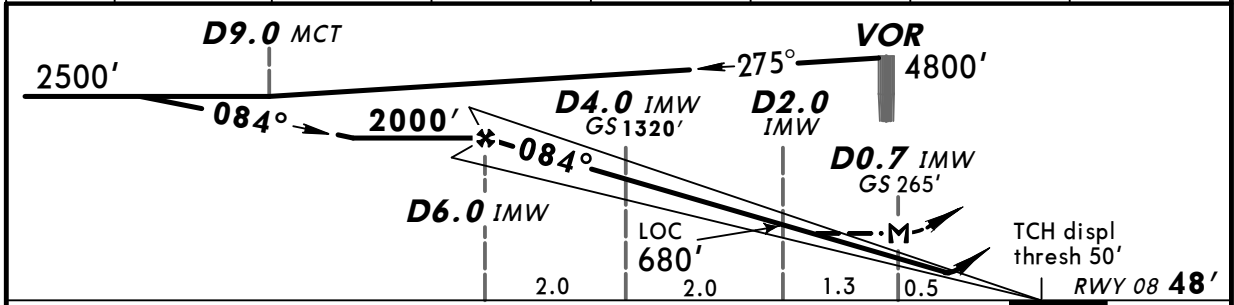
MUSCAT, OMAN
VOR DME ILS Rwy 08

BRIEFING STRIP™

ATIS 126.8		MUSCAT Approach (R) 121.2		MUSCAT Tower 118.4		Ground 121.8	
LOC IMW 108.3	Final Apch Crs 084°	GS D4.0 IMW 1320' (1272')	ILS DA(H) 248' (200')	Apt Elev 48' RWY 48'			
MISSED APCH: Climb STRAIGHT AHEAD to 1000', then turn LEFT climbing via R-070 to 3000', then climbing turn LEFT to 4800' returning to VOR and hold, or as directed.							MSA MCT VOR
Alt Set: hPa		Rwy Elev: 2hPa		Trans level: FL 150		Trans alt: 13000'	



LOC (GS out)	IMW DME	6.0	5.0	4.0	3.0	2.0	1.0
	ALTITUDE	2000'	1660'	1330'	1010'	690'	370'



Gnd speed-Kts	70	90	100	120	140	160	HIALS PAPI
ILS GS 3.00° or	377	485	539	647	755	862	
LOC Descent Gradient 5.2%							
MAP at D0.7 IMW							MCT via 114.5 R-070

STRAIGHT-IN LANDING RWY 08				CIRCLE-TO-LAND Not authorized South of rwy 08/26			
ILS DA(H) 248' (200')		LOC (GS out) MDA(H) 420' (372')					
FULL	ALS out		ALS out	Max Kts	MDA(H)		
A	800m	1200m	800m	100	490' (442')	1600m	
B				135	540' (492')	1600m	
C	SEE 11-1			C	SEE 11-1		
D				D			

PANS OPS 4

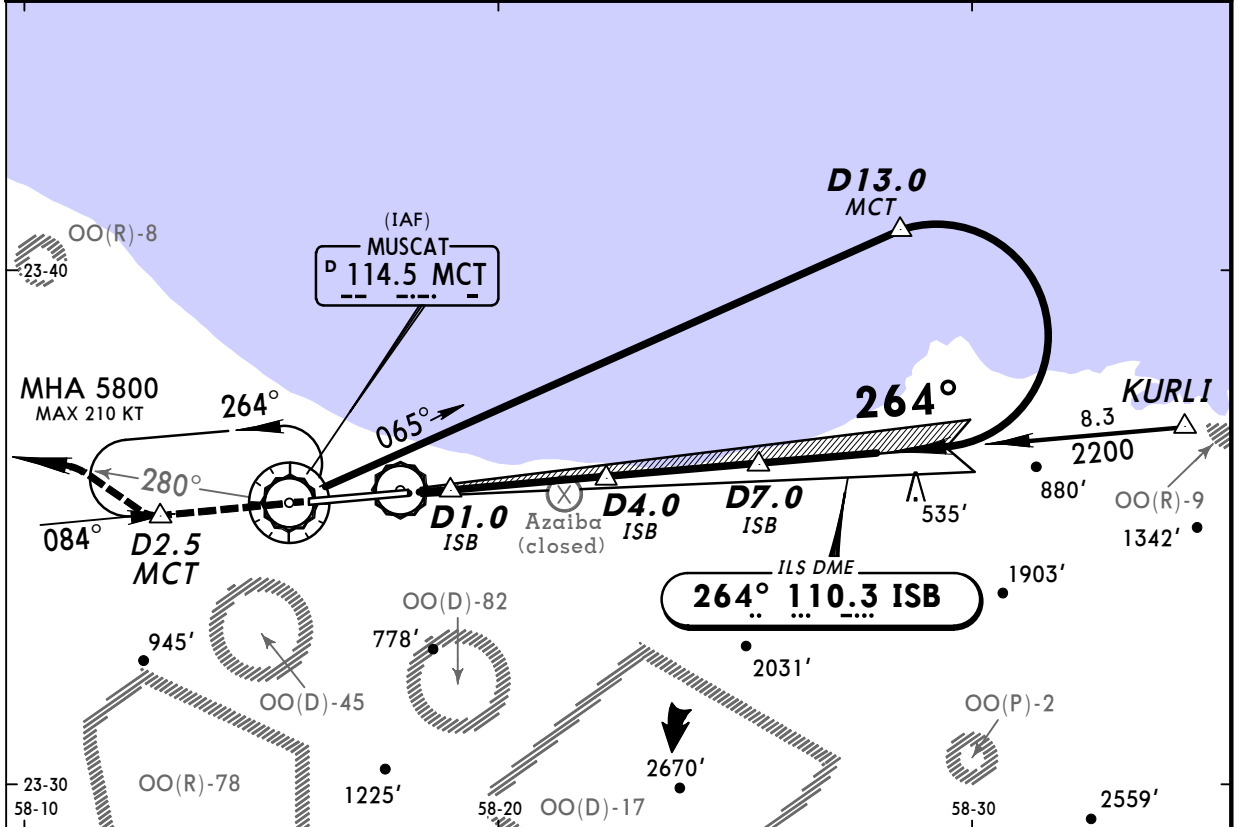
OOMS/MCT
MUSCAT INTL

JEPPESEN
27 JUN 08
Eff 3 Jul (11-3) CAT C & D

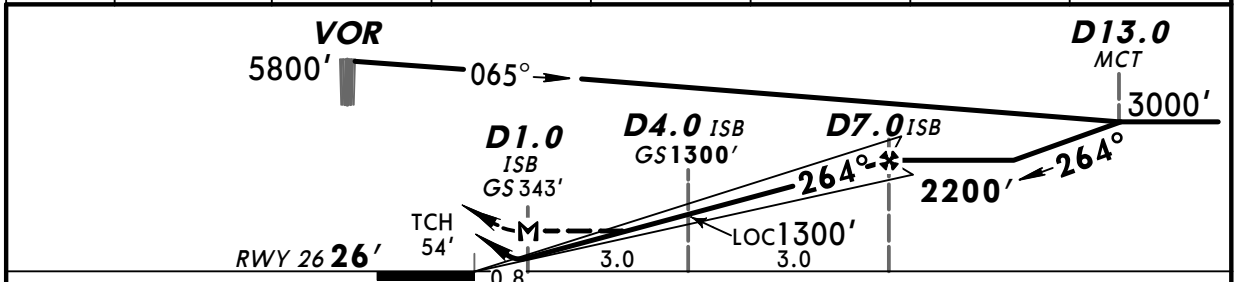
MUSCAT, OMAN
VOR DME ILS Rwy 26

BRIEFING STRIP™

ATIS 126.8		MUSCAT Approach (R) 121.2		MUSCAT Tower 118.4		Ground 121.8	
LOC ISB 110.3	Final Apch Crs 264°	GS D4.0 ISB 1300' (1275')	ILS DA(H) Refer to Minimums	Apt Elev 48' RWY 26'			
MISSED APCH: Climb STRAIGHT AHEAD, at D2.5 MCT (after passing VOR) turn RIGHT climbing via R-280 to 4500', then turn RIGHT and return to VOR at 5800' and hold, or as directed.							MSA MCT VOR
Alt Set: hPa		Rwy Elev: 1hPa	Trans level: FL 150		Trans alt: 13000'		



LOC (GS out)	ISB DME	1.0	2.0	3.0	4.0	5.0	6.0
	ALTITUDE	350'	670'	980'	1300'	1620'	1940'



Gnd speed-Kts	70	90	100	120	140	160		D2.5 MCT after VOR
ILS GS 3.00° or	377	485	539	647	755	862		
LOC Descent Gradient 5.2%								
MAP at D1.0 ISB								

STRAIGHT-IN LANDING RWY 26				CIRCLE-TO-LAND	
ILS DA(H) C: 243' (217') D: 253' (227')		LOC (GS out) MDA(H) 440' (414')		Not authorized South of rwy 08/26	
FULL	ALS out	ALS out	ALS out	Max Kts	MDA(H)
A	SEE 11-4			A	SEE 11-4
B	SEE 11-4			B	SEE 11-4
C	800m	1200m	1200m	180	660' (612') 2800m
D			2000m	205	740' (692') 3600m

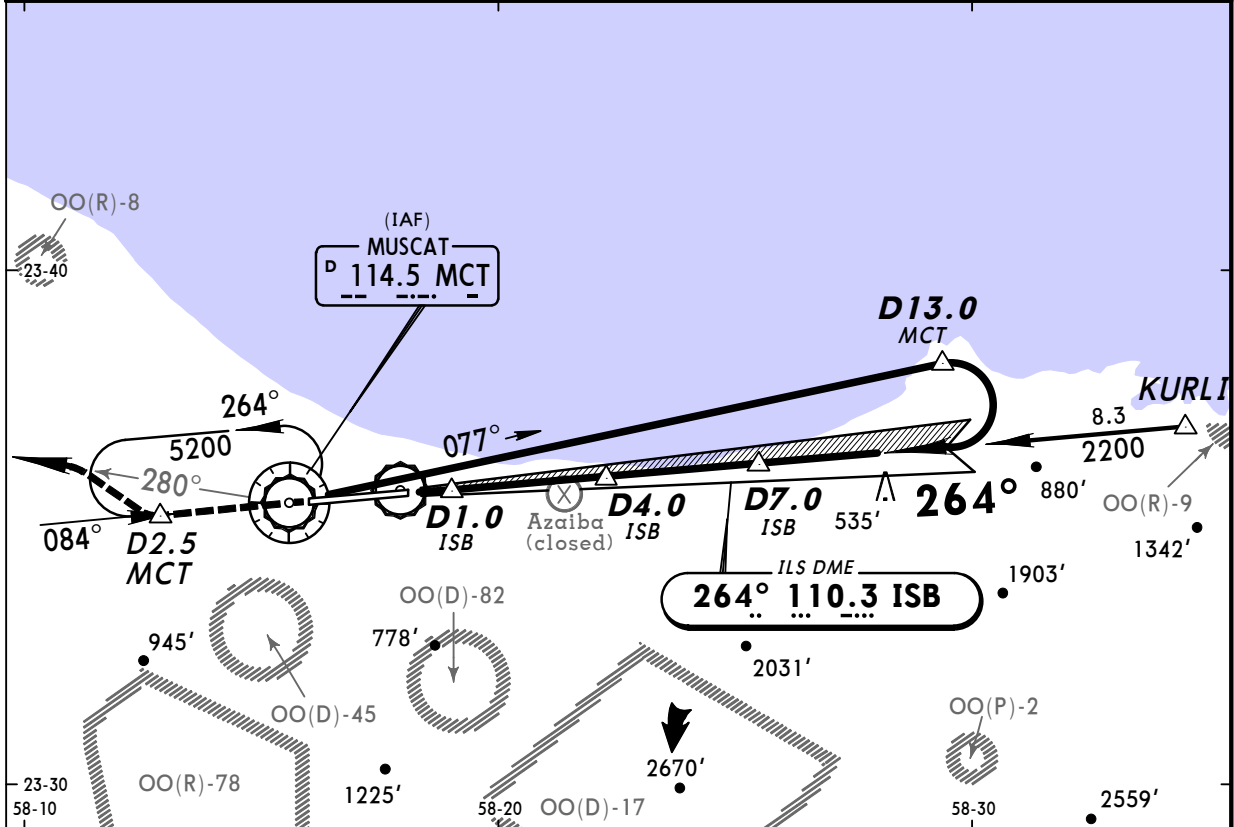
PANS OPS 4

OOMS/MCT
MUSCAT INTL

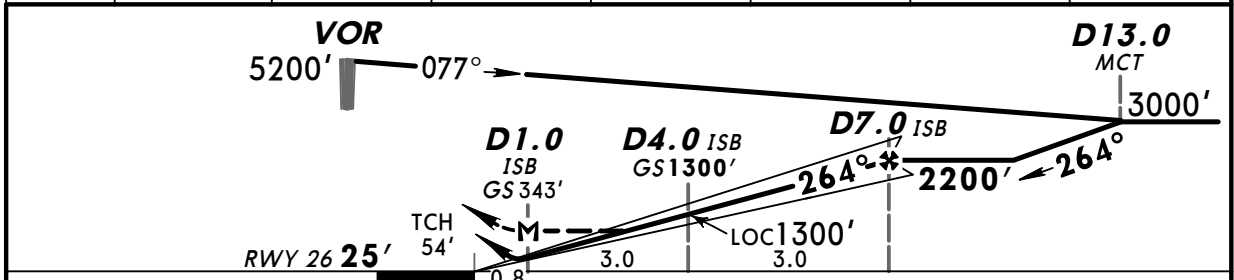
MUSCAT, OMAN
VOR DME ILS Rwy 26

BRIEFING STRIP™

ATIS 126.8		MUSCAT Approach (R) 121.2		MUSCAT Tower 118.4		Ground 121.8	
LOC ISB 110.3	Final Apch Crs 264°	GS D4.0 ISB 1300' (1275')	ILS DA(H) Refer to Minimums	Apt Elev 48' RWY 26'			
MISSED APCH: Climb STRAIGHT AHEAD, at D2.5 MCT (after passing VOR) turn RIGHT climbing via R-280 to 4500', then turn RIGHT and return to VOR at 5200' and hold, or as directed.							MSA MCT VOR
Alt Set: hPa		Rwy Elev: 1hPa		Trans level: FL 150		Trans alt: 13000'	



LOC (GS out)	ISB DME	1.0	2.0	3.0	4.0	5.0	6.0
	ALTITUDE	350'	670'	980'	1300'	1620'	1940'



Gnd speed-Kts	70	90	100	120	140	160	HIALS PAPI D2.5 after MCT
ILS GS 3.00° or	377	485	539	647	755	862	
LOC Descent Gradient 5.2%							
MAP at D1.0 ISB							

ILS STRAIGHT-IN LANDING RWY 26 DA(H) A: 226' (200') B: 233' (207') LOC (GS out) MDA(H) 440' (414')				CIRCLE-TO-LAND Not authorized South of rwy 08/26			
FULL		ALS out		ALS out		Max Kts	MDA(H)
A	800m	1200m	800m	1600m	100	490' (442')	1600m
B					135	540' (492')	1600m
C	SEE 11-3				C	SEE 11-3	
D					D		

PANS OPS 4

OOMS/MCT
MUSCAT INTL

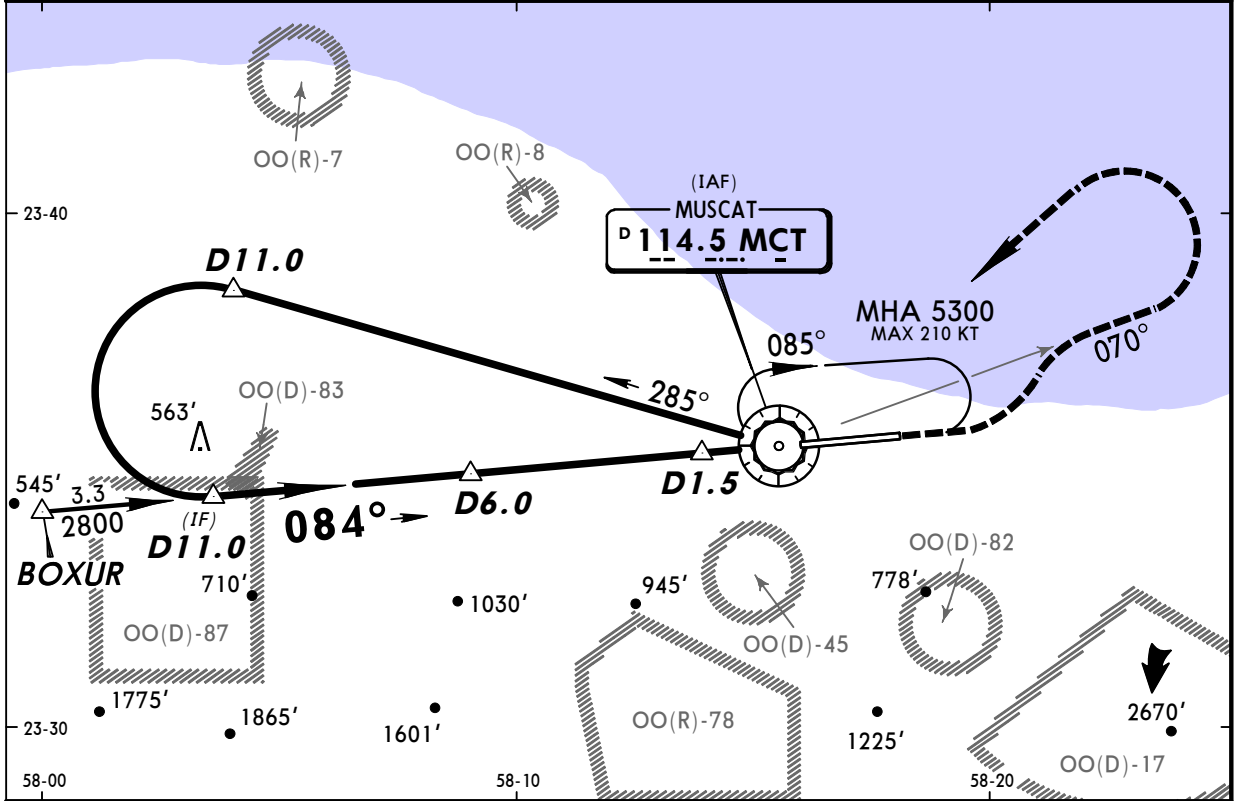
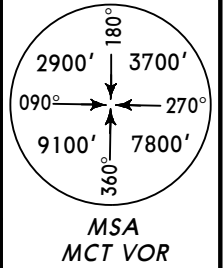
JEPPESEN
27 JUN 08
Eff 3 Jul (13-1)

CAT C & D

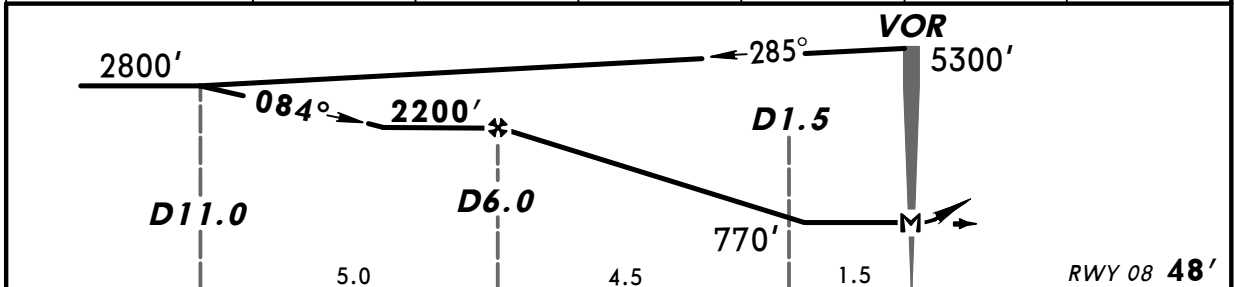
MUSCAT, OMAN
VOR DME Rwy 08

BRIEFING STRIP™

ATIS 126.8	MUSCAT Approach (R) 121.2	MUSCAT Tower 118.4	Ground 121.8
VOR MCT 114.5	Final Apch Crs 084°	Minimum Alt D6.0 2200' (2152')	MDA(H) 450' (402') Apt Elev 48' RWY 48'
<p>MISSED APCH: Climb STRAIGHT AHEAD to 1000', then turn LEFT climbing via R-070 to 4000', then climbing turn LEFT to 5300' returning to VOR and hold, or as directed.</p>			
Alt Set: hPa Initial apch restricted to MAX 210 KT.		Rwy Elev: 2hPa Trans level: FL 150	Trans alt: 13000'



MCT DME	6.0	5.0	4.0	3.0	2.0	1.0
ALTITUDE	2200'	1880'	1560'	1240'	930'	610'



TO DISPLACED THRESHOLD						0.6	0	RWY 08 48'	
Gnd speed-Kts	70	90	100	120	140	160	HIALS PAPI 1000' 4000' MCT via 114.5 LT R-070		
Descent Gradient 5.2%	369	474	527	632	738	843			
MAP at VOR									

STRAIGHT-IN LANDING RWY 08				CIRCLE-TO-LAND Not authorized South of rwy 08/26			
MDA(H) 450' (402')				MDA(H)			
ALS out				Max Kts			
A	SEE 13-2			A	SEE 13-2		
B	SEE 13-2			B	SEE 13-2		
C	1200m			180	660' (612')	2800m	
D	1600m	2000m		205	740' (692')	3600m	

PANS OPS 4

OOMS/MCT
MUSCAT INTL

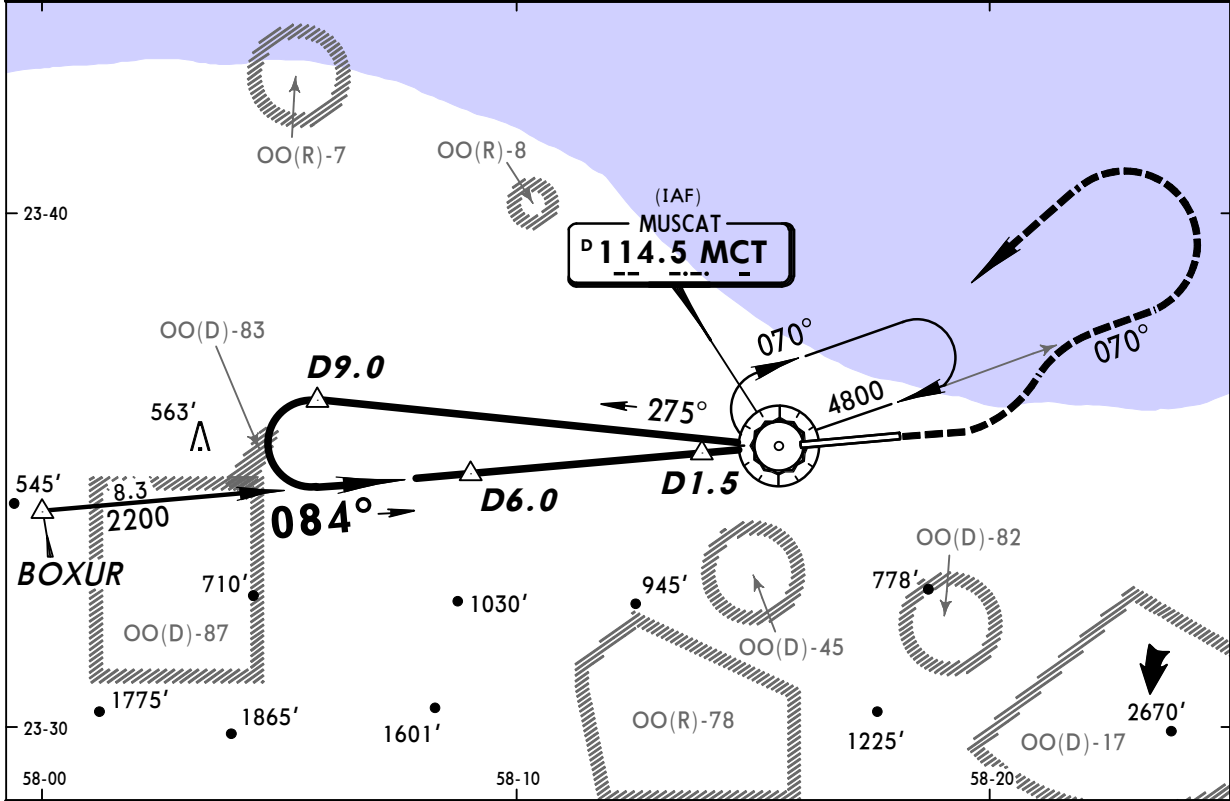
JEPPESEN
27 JUN 08
Eff 3 Jul (13-2)

CAT A & B

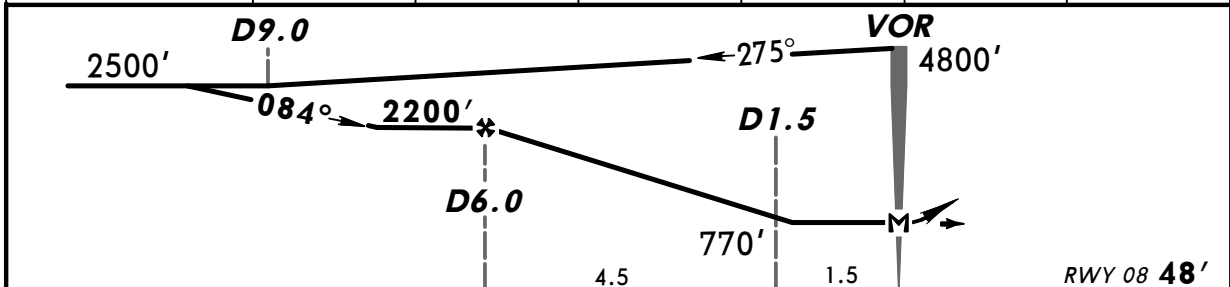
MUSCAT, OMAN
VOR DME Rwy 08

BRIEFING STRIP™

ATIS 126.8		MUSCAT Approach (R) 121.2		MUSCAT Tower 118.4	Ground 121.8
VOR MCT 114.5	Final Apch Crs 084°	Minimum Alt D6.0 2200' (2152')	MDA(H) 450' (402')	Apt Elev 48' RWY 48'	<p>MSA MCT VOR</p>
<p>MISSED APCH: Climb STRAIGHT AHEAD to 1000', then turn LEFT climbing via R-070 to 3000', then climbing turn LEFT to 4800' returning to VOR and hold, or as directed.</p>					
Alt Set: hPa		Rwy Elev: 2hPa	Trans level: FL 150	Trans alt: 13000'	



MCT DME	6.0	5.0	4.0	3.0	2.0	1.0
ALTITUDE	2200'	1880'	1560'	1240'	930'	610'



TO DISPLACED THRESHOLD								1000' 3000' MCT via 114.5 LT R-070
Gnd speed-Kts	70	90	100	120	140	160		
Descent Gradient 5.2%	369	474	527	632	738	843		
MAP at VOR								

STRAIGHT-IN LANDING RWY 08			CIRCLE-TO-LAND		
MDA(H) 450' (402')			Not authorized South of rwy 08/26		
ALS out			Max Kts	MDA(H)	
A	800m	1600m	100	490' (442')	1600m
B			135	540' (492')	1600m
C	SEE 13-1		C	SEE 13-1	
D			D		

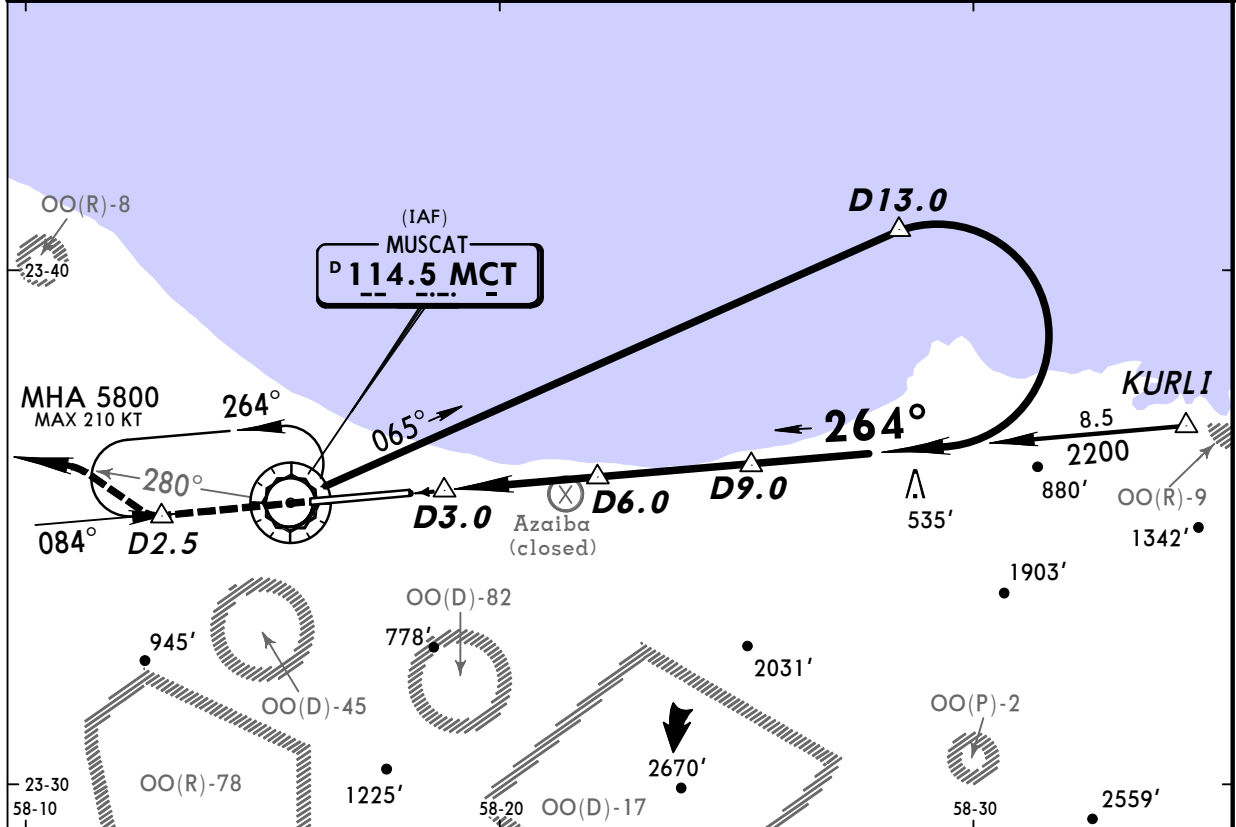
PANS OPS 4

OOMS/MCT
MUSCAT INTL

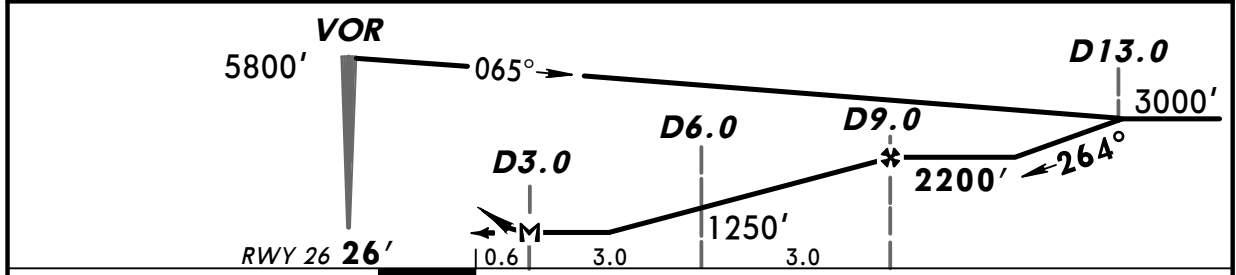
MUSCAT, OMAN
VOR DME Rwy 26

BRIEFING STRIP™

ATIS 126.8		MUSCAT Approach (R) 121.2		MUSCAT Tower 118.4		Ground 121.8	
VOR MCT 114.5	Final Apch Crs 264°	Minimum Alt D9.0 2200' (2175')	MDA(H) 400' (374')	Apt Elev 48' RWY 26'			
MISSED APCH: Climb STRAIGHT AHEAD, at D2.5 (after passing VOR) turn RIGHT climbing via R-280 to 4500', then turn RIGHT and return to VOR at 5800' and hold, or as directed.							
Alt Set: hPa		Rwy Elev: 1hPa		Trans level: FL 150		Trans alt: 13000'	
Initial apch restricted to MAX 210 KT.							



MCT DME	3.0	4.0	5.0	6.0	7.0	8.0
ALTITUDE	290'	610'	930'	1250'	1560'	1880'



Gnd speed-Kts	70	90	100	120	140	160	HIALS PAPI D2.5 after VOR
Descent Gradient 5.2%	369	474	527	632	738	843	
MAP at D3.0							

STRAIGHT-IN LANDING RWY 26				CIRCLE-TO-LAND Not authorized South of rwy 08/26			
MDA(H) 400' (374')				MDA(H)			
ALS out				Max Kts			
A	SEE 13-4			A	SEE 13-4		
B				B			
C	800m	1600m		180	660' (612')	2800m	
D	1600m	2000m		205	740' (692')	3600m	

PANS OPS 4

OOMS/MCT
MUSCAT INTL

27 JUN 08
Eff 3 Jul

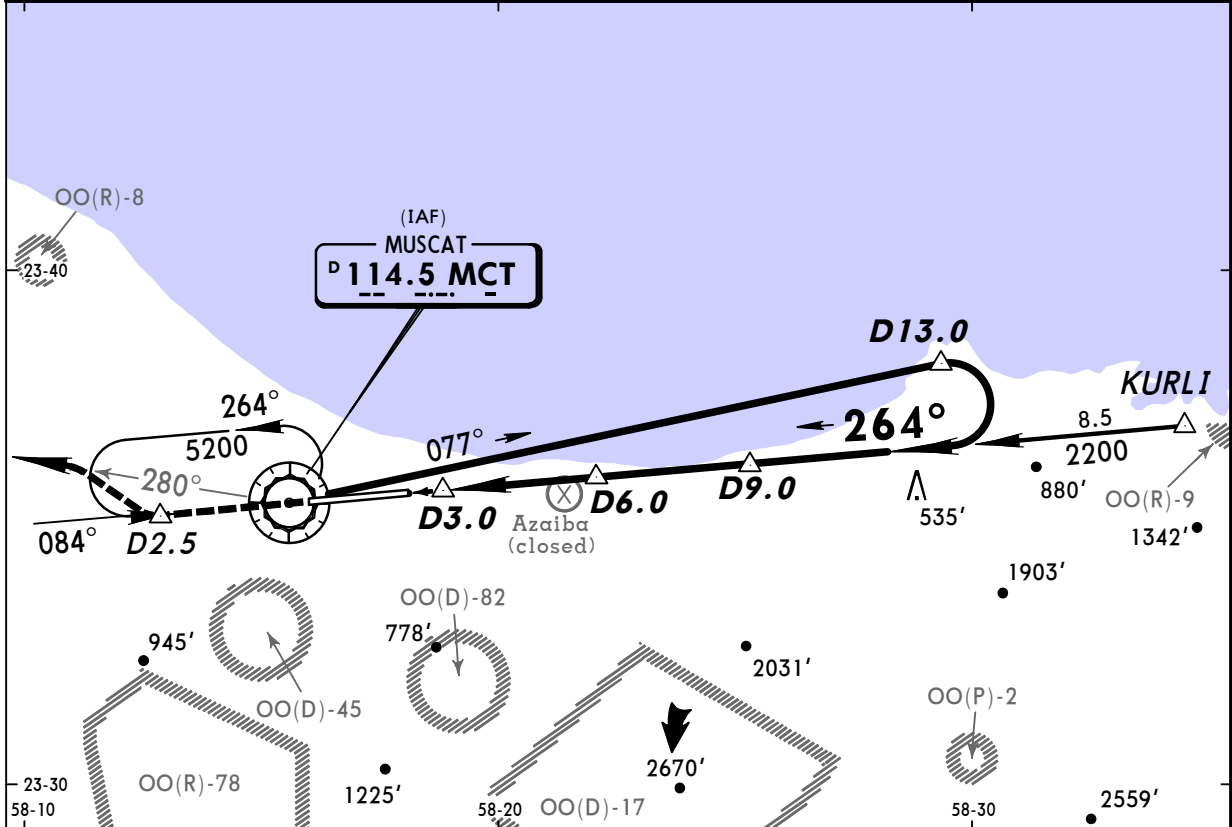
13-4

CAT A & B

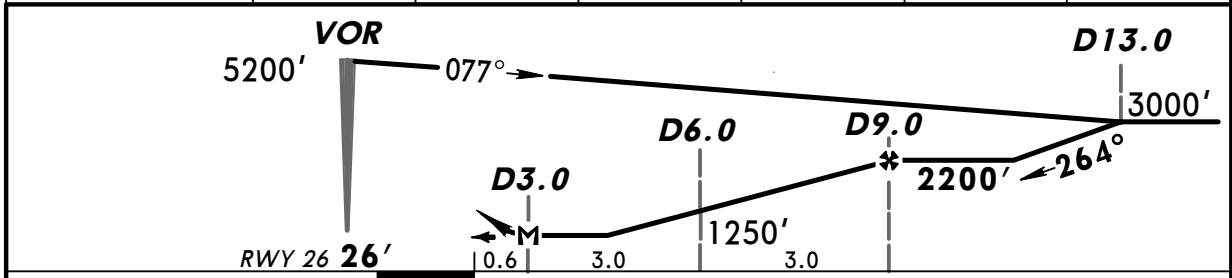
MUSCAT, OMAN
VOR DME Rwy 26

BRIEFING STRIP™

ATIS 126.8		MUSCAT Approach (R) 121.2		MUSCAT Tower 118.4	Ground 121.8
VOR MCT 114.5	Final Apch Crs 264°	Minimum Alt D9.0 2200' (2175')	MDA(H) 400' (374')	Apt Elev 48' RWY 26'	
<p>MISSED APCH: Climb STRAIGHT AHEAD, at D2.5 (after passing VOR) turn RIGHT climbing via R-280 to 4500', then turn RIGHT and return to VOR at 5200' and hold, or as directed.</p>					
Alt Set: hPa	Rwy Elev: 1hPa	Trans level: FL 150	Trans alt: 13000'	MSA MCT VOR	



MCT DME	3.0	4.0	5.0	6.0	7.0	8.0
ALTITUDE	290'	610'	930'	1250'	1560'	1880'



Gnd speed-Kts	70	90	100	120	140	160	
Descent Gradient 5.2%	369	474	527	632	738	843	
MAP at D3.0							

STRAIGHT-IN LANDING RWY 26			CIRCLE-TO-LAND Not authorized South of rwy 08/26		
MDA(H) 400' (374')					
ALS out			Max Kts	MDA(H)	
A	800m	1600m	100	490' (442')	1600m
B			135	540' (492')	1600m
C	SEE 13-3		C	SEE 13-3	
D			D		

PANS OPS 4