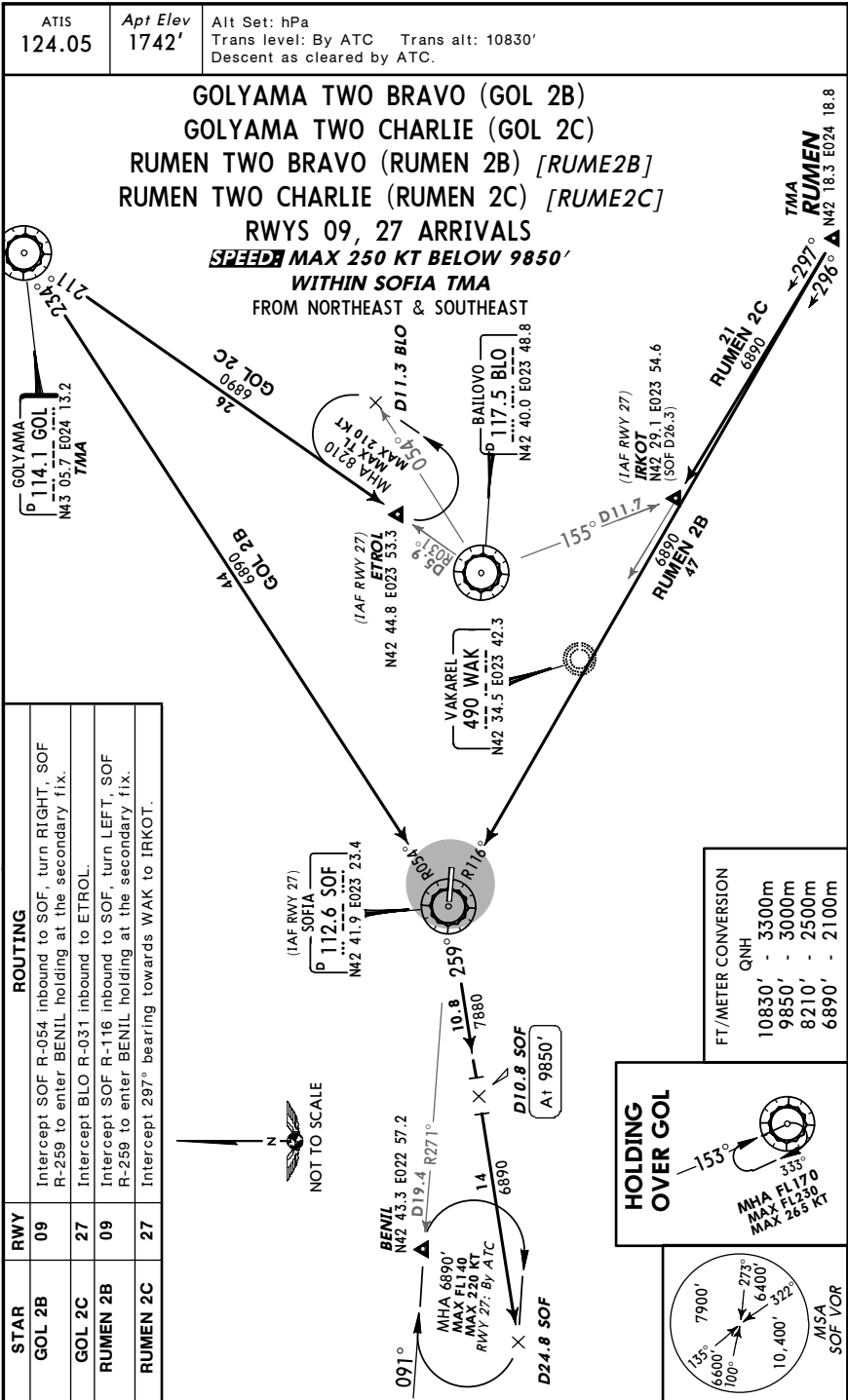


LBSF/SOF
 SOFIA

JEPPESEN
 20 JUL 07 (10-2)

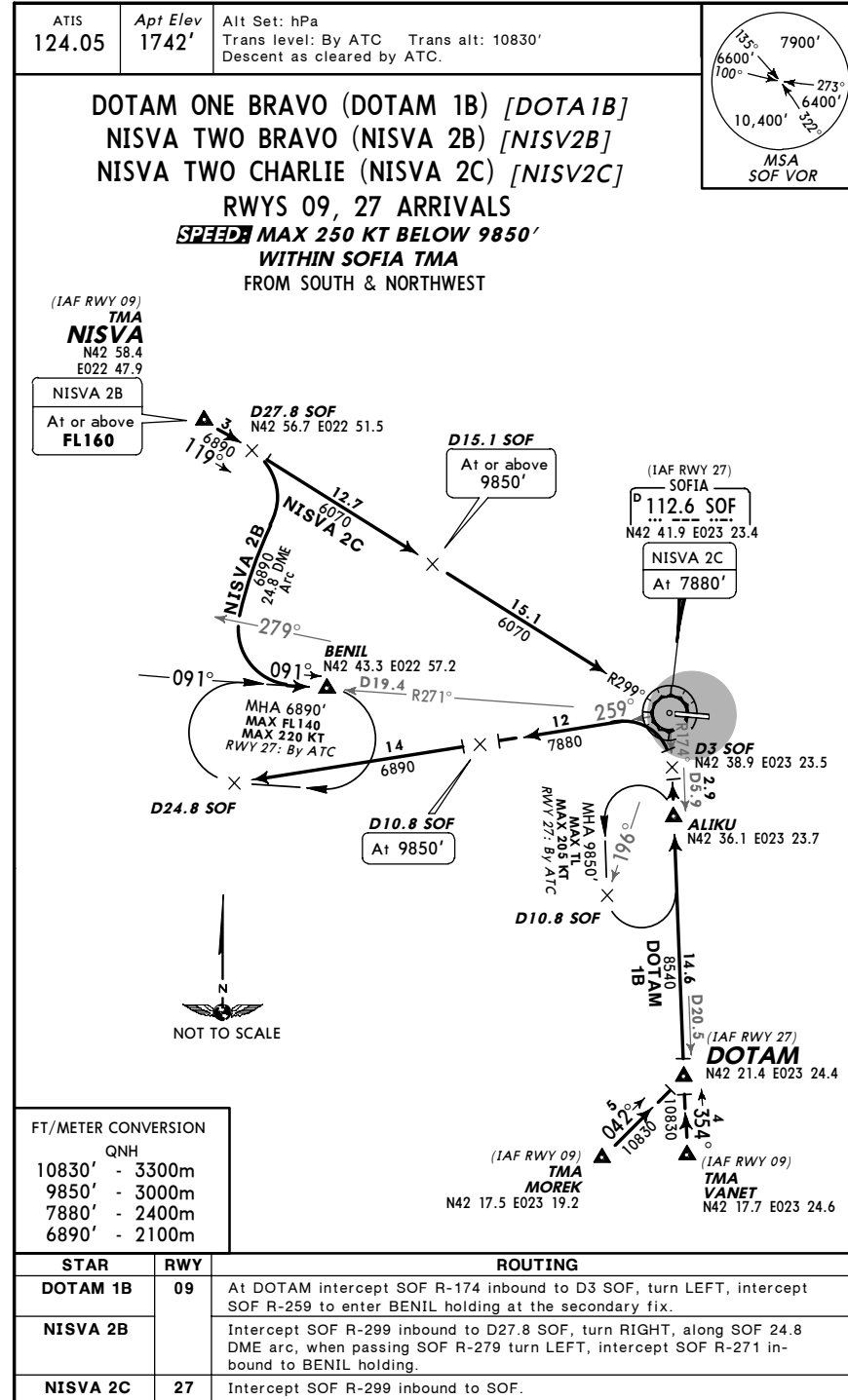
SOFIA, BULGARIA
 STAR



LBSF/SOF
 SOFIA

JEPPESEN
 20 JUL 07 (10-2A)

SOFIA, BULGARIA
 STAR



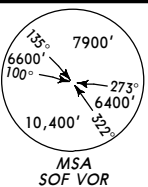
LBSF/SOF
 SOFIA

JEPPESEN

SOFIA, BULGARIA

20 JUL 07 (10-3) Eff 2 Aug

SID



SOFIA Radar (APP)
 123.7
 Apt Elev
 1742'

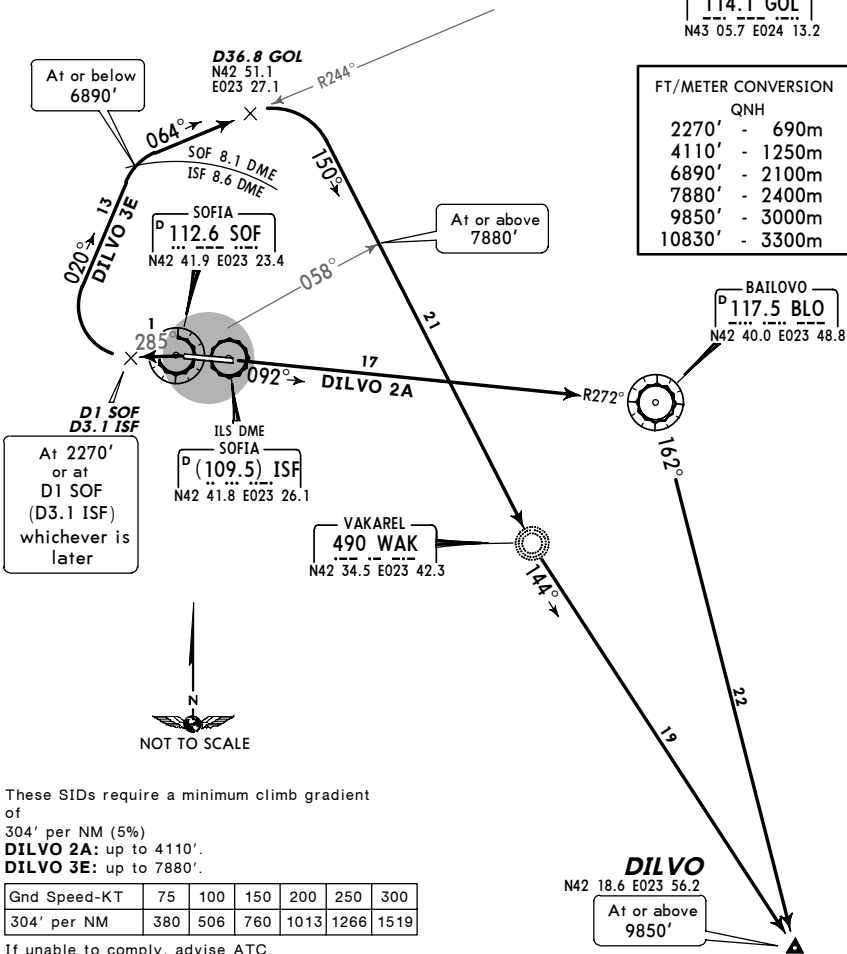
Trans level: By ATC Trans alt: 10830'
 1. Contact SOFIA Radar immediately after take-off.
 2. SIDs are noise abatement procedures. Strict adherence within the limits of aircraft performance is mandatory.

DILVO TWO ALFA (DILVO 2A) [DILV2A]
DILVO THREE ECHO (DILVO 3E) [DILV3E]
 RWYS 09, 27 DEPARTURES
SPEED MAX 250 KT BELOW 9850'

GOLYAMA
 P 114.1 GOL
 N43 05.7 E024 13.2

FT/METER CONVERSION
 QNH

2270'	-	690m
4110'	-	1250m
6890'	-	2100m
7880'	-	2400m
9850'	-	3000m
10830'	-	3300m



These SIDs require a minimum climb gradient of 304' per NM (5%)
DILVO 2A: up to 4110'.
DILVO 3E: up to 7880'.

Gnd Speed-KT	75	100	150	200	250	300
304' per NM	380	506	760	1013	1266	1519

If unable to comply, advise ATC.

Departure turn MAX 255 KT (Rwy 09)/ MAX 205 KT (Rwy 27).

Initial climb clearance By ATC

SID	RWY	ROUTING
DILVO 2A	09	Climb on BLO R-272 inbound to BLO, turn RIGHT, BLO R-162 to DILVO.
DILVO 3E	27	Climb on SOF R-285 to 2270' or to D1 SOF (D3.1 ISF), whichever is later, turn RIGHT, 020° track, intercept GOL R-244 inbound to D36.8 GOL, turn RIGHT, intercept 150° bearing to WAK, turn LEFT, 144° bearing to DILVO.

LBSF/SOF
 SOFIA

JEPPESEN

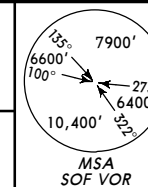
SOFIA, BULGARIA

20 JUL 07 (10-3A) Eff 2 Aug

SID

SOFIA Radar (APP)
 123.7
 Apt Elev
 1742'

Trans level: By ATC Trans alt: 10830'
 1. Contact SOFIA Radar immediately after take-off.
 2. SIDs are noise abatement procedures. Strict adherence within the limits of aircraft performance is mandatory.

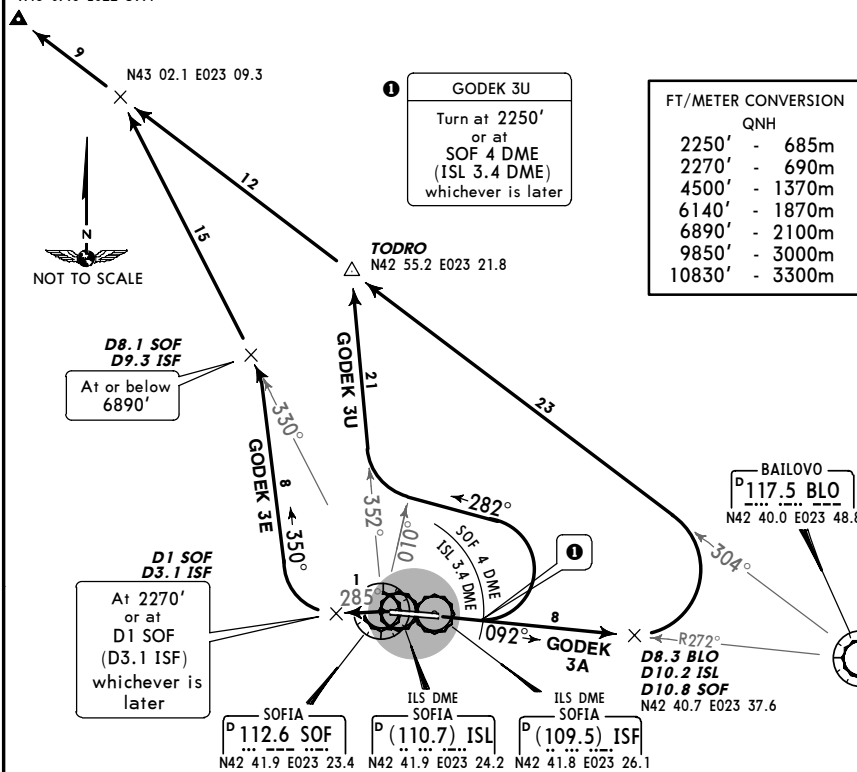


GODEK THREE ALFA (GODEK 3A) [GODE3A]
GODEK THREE ECHO (GODEK 3E) [GODE3E]
GODEK THREE UNIFORM (GODEK 3U) [GODE3U]
 RWYS 09, 27 DEPARTURES
SPEED MAX 250 KT BELOW 9850'

GODEK
 N43 07.6 E022 59.4

FT/METER CONVERSION
 QNH

2250'	-	685m
2270'	-	690m
4500'	-	1370m
6140'	-	1870m
6890'	-	2100m
9850'	-	3000m
10830'	-	3300m



These SIDs require a minimum climb gradient of 304' per NM (5%)
GODEK 3A: up to 6140'.
GODEK 3E: up to 6890'.
GODEK 3U: up to 4500'.

Gnd Speed-KT	75	100	150	200	250	300
304' per NM	380	506	760	1013	1266	1519

If unable to comply, advise ATC.

Departure turn MAX 240 KT (GODEK 3A)/ MAX 205 KT (GODEK 3E, 3U).

Initial climb clearance By ATC

SID	RWY	ROUTING
GODEK 3A	09	Climb on BLO R-272 inbound to D8.3 BLO (D10.2 ISL/D10.8 SOF), turn LEFT, intercept BLO R-304 to GODEK.
GODEK 3E	27	Climb on SOF R-285 to 2270' or to D1 SOF (D3.1 ISF), whichever is later, turn RIGHT, 350° track, intercept SOF R-330, intercept BLO R-304 to GODEK.
GODEK 3U	09	Climb straight ahead to 2250' or to SOF 4 DME (ISL 3.4 DME), whichever is later, turn LEFT, 282° track, intercept SOF R-352 to TODRO, turn LEFT, intercept BLO R-304 to GODEK.

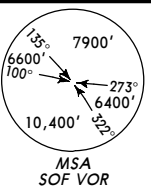
LBSF/SOF
 SOFIA

JEPPESEN

SOFIA, BULGARIA

20 JUL 07 (10-3B) Eff 2 Aug

SID

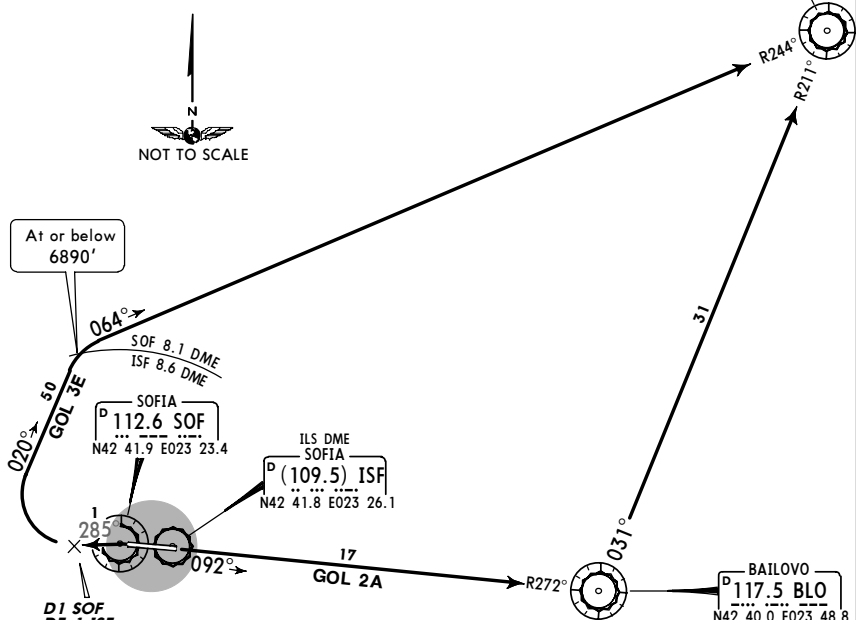


SOFIA Radar (APP) 123.7
 Apt Elev 1742'

Trans level: By ATC Trans alt: 10830'
 1. Contact SOFIA Radar immediately after take-off.
 2. SIDs are noise abatement procedures. Strict adherence within the limits of aircraft performance is mandatory.

GOLYAMA TWO ALFA (GOL 2A)
 GOLYAMA THREE ECHO (GOL 3E)
 RWYS 09, 27 DEPARTURES
SPEEDS MAX 250 KT BELOW 9850'

GOLYAMA
 D 114.1 GOL
 N43 05.7 E024 13.2



FT/METER CONVERSION

FT	METER
2270'	690m
3940'	1200m
6890'	2100m
9850'	3000m
10830'	3300m

These SIDs require a minimum climb gradient of 304' per NM (5%)
GOL 2A: up to 3940'.
GOL 3E: up to 6890'.

Gnd Speed-KT	75	100	150	200	250	300
304' per NM	380	506	760	1013	1266	1519

If unable to comply, advise ATC.

Departure turn MAX 255 KT (Rwy 09)/ MAX 205 KT (Rwy 27).

Initial climb clearance **By ATC**

SID	RWY	ROUTING
GOL 2A	09	Climb on BLO R-272 inbound to BLO, turn LEFT, intercept GOL R-211 inbound to GOL.
GOL 3E	27	Climb on SOF R-285 to 2270' or to D1 SOF (D3.1 ISF), whichever is later, turn RIGHT, 020° track, intercept GOL R-244 inbound to GOL.

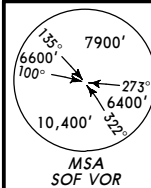
LBSF/SOF
 SOFIA

JEPPESEN

SOFIA, BULGARIA

20 JUL 07 (10-3C) Eff 2 Aug

SID

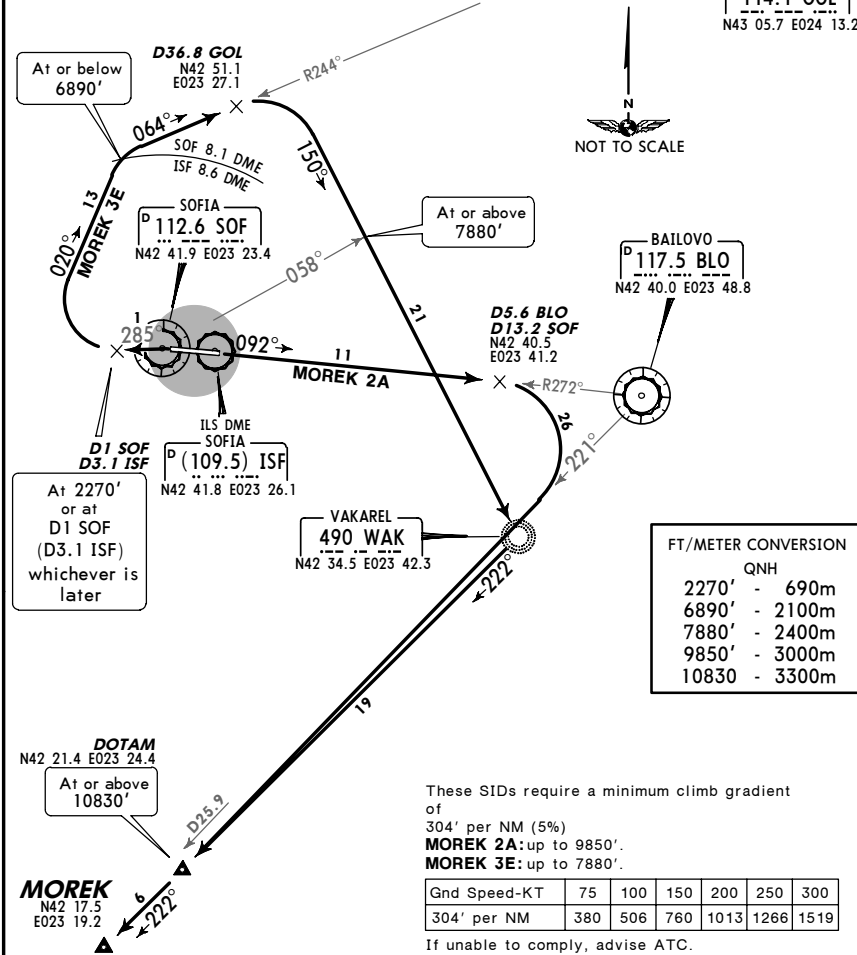


SOFIA Radar (APP) 123.7
 Apt Elev 1742'

Trans level: By ATC Trans alt: 10830'
 1. Contact SOFIA Radar immediately after take-off.
 2. SIDs are noise abatement procedures. Strict adherence within the limits of aircraft performance is mandatory.

MOREK TWO ALFA (MOREK 2A) [MORE2A]
 MOREK THREE ECHO (MOREK 3E) [MORE3E]
 RWYS 09, 27 DEPARTURES
SPEEDS MAX 250 KT BELOW 9850'

GOLYAMA
 D 114.1 GOL
 N43 05.7 E024 13.2



FT/METER CONVERSION

FT	METER
2270'	690m
6890'	2100m
7880'	2400m
9850'	3000m
10830'	3300m

These SIDs require a minimum climb gradient of 304' per NM (5%)
MOREK 2A: up to 9850'.
MOREK 3E: up to 7880'.

Gnd Speed-KT	75	100	150	200	250	300
304' per NM	380	506	760	1013	1266	1519

If unable to comply, advise ATC.

Departure turn MAX 250 KT (Rwy 09)/ MAX 205 KT (Rwy 27).

Initial climb clearance **By ATC**

SID	RWY	ROUTING
MOREK 2A	09	Climb on BLO R-272 inbound to D5.6 BLO (D13.2 SOF), turn RIGHT, intercept BLO R-221 to MOREK.
MOREK 3E	27	Climb on SOF R-285 to 2270' or to D1 SOF (D3.1 ISF), whichever is later, turn RIGHT, 020° track, intercept GOL R-244 inbound to GOL, turn RIGHT, 150° bearing to WAK, turn RIGHT, 222° bearing to MOREK.

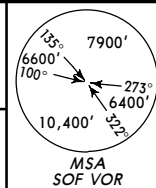
LBSF/SOF
 SOFIA

JEPPESEN
 20 JUL 07 (10-3D) Eff 2 Aug

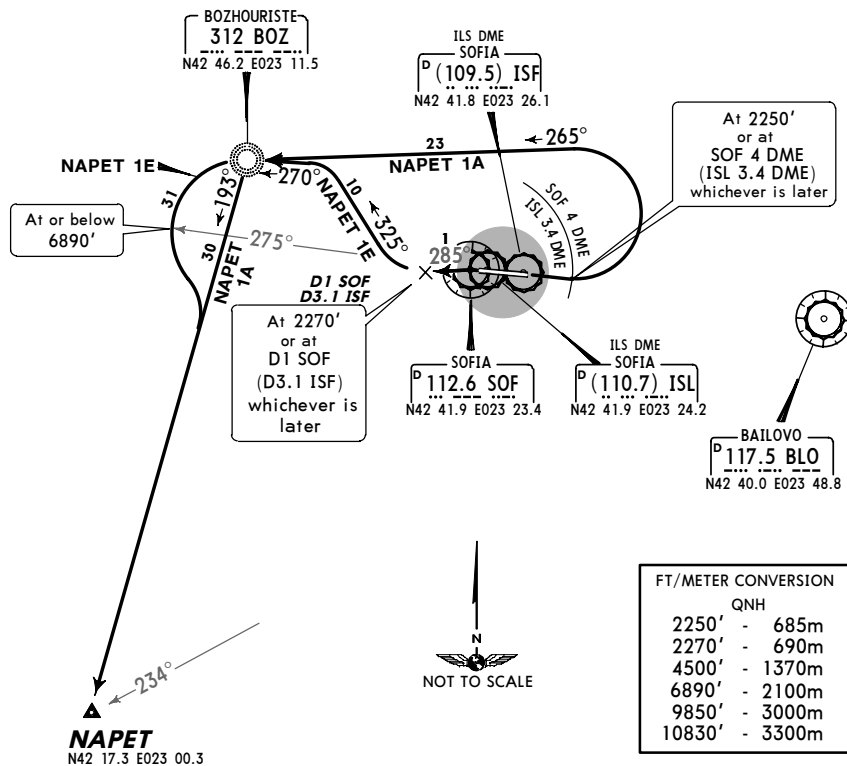
SOFIA, BULGARIA
 SID

SOFIA Radar (APP)
 123.7
 Apt Elev
 1742'

Trans level: By ATC Trans alt: 10830'
 1. Contact SOFIA Radar immediately after take-off.
 2. SIDs are noise abatement procedures. Strict adherence within the limits of aircraft performance is mandatory.



NAPET ONE ALFA (NAPET 1A) [NAPE1A]
NAPET ONE ECHO (NAPET 1E) [NAPE1E]
 RWYS 09, 27 DEPARTURES
 BY ATC
SPEED MAX 250 KT BELOW 9850'



FT/METER CONVERSION

QNH	2250'	2270'	4500'	6140'	6890'	9850'	10830'
	685m	690m	1370m	1870m	2100m	3000m	3300m

These SIDs require a minimum climb gradient of 304' per NM (5%)
NAPET 1A: up to 4500'.
NAPET 1E: up to 6890'.

Gnd Speed-KT	75	100	150	200	250	300
304' per NM	380	506	760	1013	1266	1519

If unable to comply, advise ATC.

Departure turn MAX 205 KT.

Initial climb clearance **By ATC**

SID	RWY	ROUTING
NAPET 1A	09	Climb straight ahead to 2250' or to SOF 4 DME (ISL 3.4 DME), whichever is later, turn LEFT, intercept 265° bearing to BOZ, turn LEFT, 193° bearing to NAPET.
NAPET 1E	27	Climb on SOF R-285 to 2270' or to D1 SOF (D3.1 ISF), whichever is later, turn RIGHT, 325° track, intercept 270° bearing to BOZ, turn LEFT, intercept 193° bearing to NAPET.

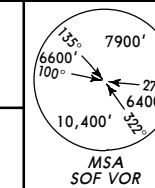
LBSF/SOF
 SOFIA

JEPPESEN
 20 JUL 07 (10-3E) Eff 2 Aug

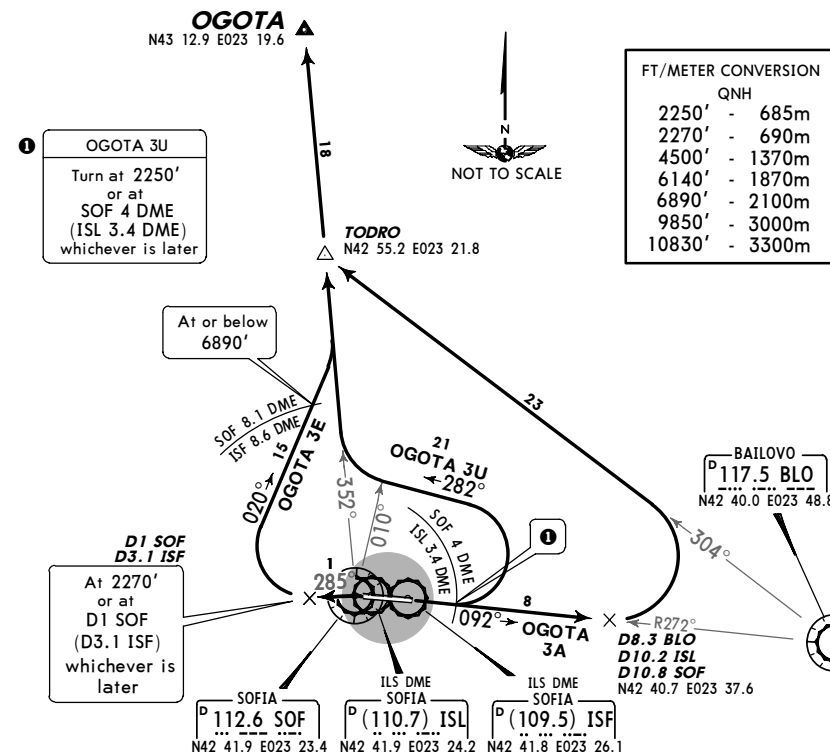
SOFIA, BULGARIA
 SID

SOFIA Radar (APP)
 123.7
 Apt Elev
 1742'

Trans level: By ATC Trans alt: 10830'
 1. Contact SOFIA Radar immediately after take-off.
 2. SIDs are noise abatement procedures. Strict adherence within the limits of aircraft performance is mandatory.



OGOTA THREE ALFA (OGOTA 3A) [OGOT3A]
OGOTA THREE ECHO (OGOTA 3E) [OGOT3E]
OGOTA THREE UNIFORM (OGOTA 3U) [OGOT3U]
 RWYS 09, 27 DEPARTURES
SPEED MAX 250 KT BELOW 9850'



FT/METER CONVERSION

QNH	2250'	2270'	4500'	6140'	6890'	9850'	10830'
	685m	690m	1370m	1870m	2100m	3000m	3300m

These SIDs require a minimum climb gradient of 304' per NM (5%)
OGOTA 3A: up to 6140'.
OGOTA 3E: up to 6890'.
OGOTA 3U: up to 4500'.

Gnd Speed-KT	75	100	150	200	250	300
304' per NM	380	506	760	1013	1266	1519

If unable to comply, advise ATC.

Departure turn MAX 240 KT (OGOTA 3A)/ MAX 205 KT (OGOTA 3E, 3U).

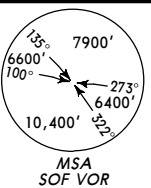
Initial climb clearance **By ATC**

SID	RWY	ROUTING
OGOTA 3A	09	Climb on BLO R-272 inbound to D8.3 BLO (D10.2 ISL/D10.8 SOF), turn LEFT, intercept BLO R-304 to TODRO, turn RIGHT, intercept SOF R-352 to OGOTA.
OGOTA 3E	27	Climb on SOF R-285 to 2270' or to D1 SOF (D3.1 ISF), whichever is later, turn RIGHT, 020° track, intercept SOF R-352 to OGOTA.
OGOTA 3U	09	Climb straight ahead to 2250' or to SOF 4 DME (ISL 3.4 DME), whichever is later, turn LEFT, 282° track, intercept SOF R-352 to OGOTA.

LBSF/SOF
 SOFIA

JEPPESEN
 20 JUL 07 (10-3F) Eff 2 Aug

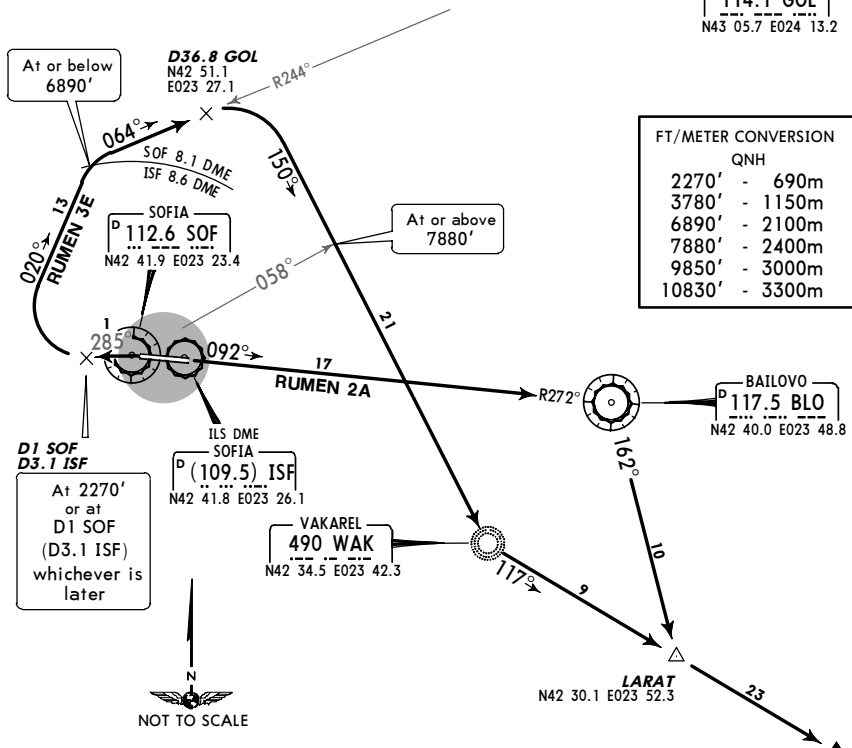
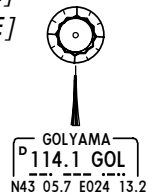
SOFIA, BULGARIA
 SID



SOFIA Radar (APP)
 123.7
 Apt Elev
 1742'

Trans level: By ATC Trans alt: 10830'
 1. Contact SOFIA Radar immediately after take-off.
 2. SIDs are noise abatement procedures. Strict adherence within the limits of aircraft performance is mandatory.

RUMEN TWO ALFA (RUMEN 2A) [RUME2A]
 RUMEN THREE ECHO (RUMEN 3E) [RUME3E]
 RWYS 09, 27 DEPARTURES
KEEP ~~FLY~~ MAX 250 KT BELOW 9850'



FT/METER CONVERSION
 QNH

2270'	-	690m
3780'	-	1150m
6890'	-	2100m
7880'	-	2400m
9850'	-	3000m
10830'	-	3300m

These SIDs require a minimum climb gradient of 304' per NM (5%)
RUMEN 2A: up to 3780'.
RUMEN 3E: up to 7880'.

Gnd Speed-KT	75	100	150	200	250	300
304' per NM	380	506	760	1013	1266	1519

If unable to comply, advise ATC.
 Departure turn MAX 255 KT (Rwy 09)/ MAX 205 KT (Rwy 27).

Initial climb clearance By ATC		
SID	RWY	ROUTING
RUMEN 2A	09	Climb on BLO R-272 inbound to BLO, turn RIGHT, BLO R-162 to LARAT, turn LEFT, intercept 117° bearing from WAK to RUMEN.
RUMEN 3E	27	Climb on SOF R-285 to 2270' or to D1 SOF (D3.1 ISF), whichever is later, turn RIGHT, 020° track, intercept GOL R-244 inbound to D36.8 GOL, turn RIGHT, intercept 150° bearing to WAK, turn LEFT, 117° bearing to RUMEN.

LBSF/SOF
 SOFIA

JEPPESEN
 25 AUG 06 (10-4) Eff 31 Aug

SOFIA, BULGARIA
 NOISE

NOISE ABATEMENT

SUMMER : LT minus 3 HOURS = UTC (Z)
WINTER : LT minus 2 HOURS = UTC (Z)

GENERAL

The following procedures are specified for noise abatement over populated areas of Sofia city. Deviations are only permitted for safety reasons. Overflying of Sofia city is prohibited except in cases stated in para EXCEPTIONS below.

RUNWAY USAGE

Runway 27 will be used for take-off at daytime and nighttime in cases when:
 - the strength and direction of the wind do not allow the use of runway 09;
 - the controller clears the take-off due to an intensive traffic or in cases stated in para EXCEPTIONS below.

Runway 09 will be used for landing at daytime and nighttime in cases when:
 - the strength and direction of the wind do not allow the use of runway 27;
 - the controller clears the landing due to an intensive traffic or in cases stated in para EXCEPTIONS below.

EXCEPTIONS

- Exceptions to runway use and overflying of Sofia city are admitted in cases of:
- governmental flights;
 - search and rescue flights;
 - ambulance flights;
 - rescue flights in distress;
 - check flights of the police;
 - emergency landings and landings of aircraft using the airport as an alternate.

RUN-UP TESTS

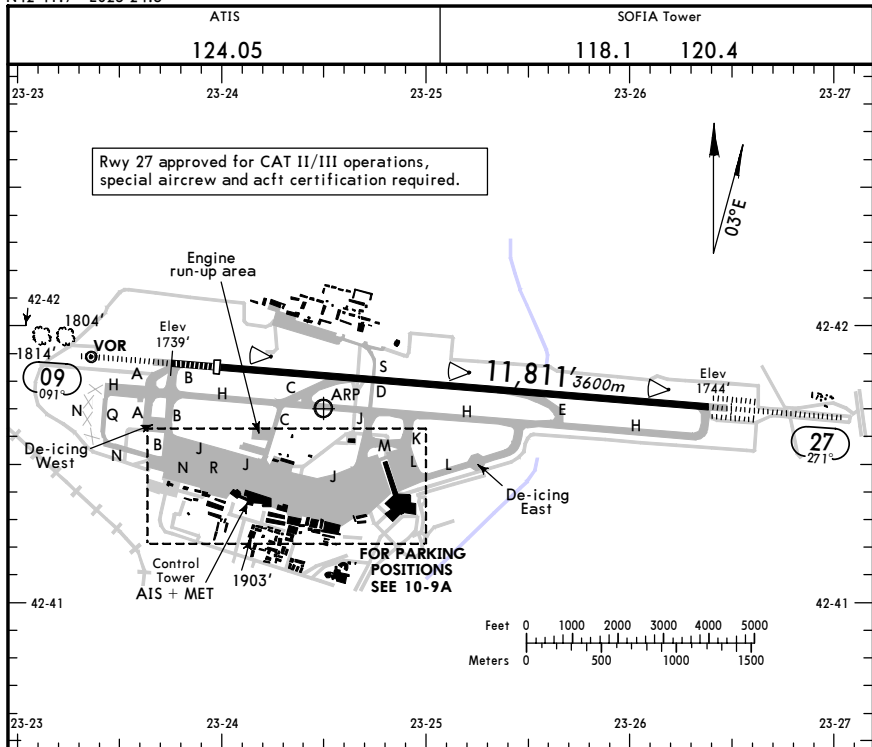
Engine test runs are allowed only between 0700-1900LT and may take place at the designated areas.

LBSF/SOF **JEPPESEN** **SOFIA, BULGARIA**

Ap^t Elev **1742'**
 N42 41.7 E023 24.5

14 SEP 07 **(10-9)** Eff 27 Sep

SOFIA



ADDITIONAL RUNWAY INFORMATION

RWY	HIRL (60m) CL (15m) HIALS PAPI-R (3.0°)	RVR	USABLE LENGTHS		TAKE-OFF	WIDTH
			Threshold	Glide Slope		
09	HIRL (60m) CL (15m) HIALS PAPI-R (3.0°)	RVR	10,827' 3300m	9794' 2985m	②	148'
27	HIRL (60m) CL (15m) HIALS-II SFL TDZ ①	RVR		10,717' 3267m		45m

① PAPI-L (3.0°)

② TAKE-OFF RUN AVAILABLE

RWY 09:
 From rwy head 11,811' (3600m)
 twy C int 8038' (2450m)

TAKE-OFF

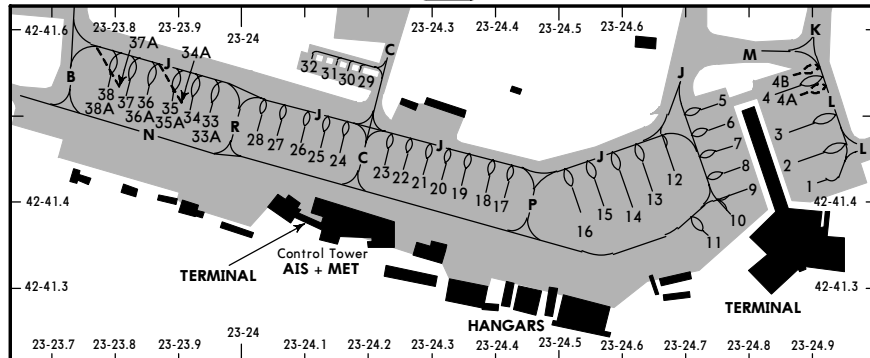
AIR CARRIER All Rwys			AIR CARRIER (FAR 121) All Rwys	
RL & CL ①	RL & RCLM (DAY only)	RL	RL, CL & RCLM two RVR req	RL
A	250m ①	400m	A	RVR 500m VIS 400m
B	200m (150m)	300m ①	B	RVR 175m
C		500m	C	500m
D	250m (200m)	400m	D	RVR 200m
		600m		600m

① LVP must be in force.

LBSF/SOF **JEPPESEN** **SOFIA, BULGARIA**

14 SEP 07 **(10-9A)** Eff 27 Sep

SOFIA



INS COORDINATES

STAND No.	COORDINATES	STAND No.	COORDINATES
1, 2	N42 41.4 E023 24.9	19 thru 22	N42 41.4 E023 24.3
3, 4	N42 41.5 E023 24.8	23	N42 41.4 E023 24.2
4A	N42 41.5 E023 24.9	24	N42 41.5 E023 24.2
4B thru 7	N42 41.5 E023 24.8	25 thru 27	N42 41.5 E023 24.1
8 thru 10	N42 41.4 E023 24.8	28	N42 41.5 E023 24.0
11	N42 41.3 E023 24.7	29, 30	N42 41.5 E023 24.2
12, 13	N42 41.4 E023 24.7	31, 32	N42 41.6 E023 24.1
14, 15	N42 41.4 E023 24.6	33	N42 41.5 E023 24.0
16	N42 41.4 E023 24.5	33A thru 36	N42 41.5 E023 23.9
17, 18	N42 41.4 E023 24.4	36A thru 38A	N42 41.5 E023 23.8

LBSF/SOF

JEPPESEN
 14 SEP 07 10-9X Eff 27 Sep

JAA MINIMUMS
 SOFIA, BULGARIA
 SOFIA

STRAIGHT-IN RWY		A	B	C	D
09	ILS DME	1939' (200')	1939' (200')	1939' (200')	1939' (200')
		R550m V800m	R550m V800m	R550m V800m	R550m V800m
	ALS out	1200m	1200m	1200m	1200m
	LOC	2200' (461')	2200' (461')	2200' (461')	2200' (461')
		1600m	1600m	2000m	2400m
	ALS out	2400m	2400m	2800m	3200m
	LOC	2400' (661')	2400' (661')	2400' (661')	2400' (661')
	w/o D2.7 ISL/D2.1 SOF	1600m	1600m	2000m	2400m
	ALS out	2400m	2400m	2800m	3200m
	VOR DME	2250' (508')	2250' (508')	2250' (508')	2250' (508')
	1600m	1600m	2000m	2800m	
ALS out	2400m	2400m	2800m	3600m	
VOR DME	2600' (858')	2600' (858')	2600' (858')	2600' (858')	
w/o D2.1 SOF	1600m	1600m	2000m	2800m	
ALS out	2400m	2400m	2800m	3600m	
27	CAT 2 ILS DME	1844' (100')	1844' (100')	1844' (100')	1844' (100')
		RA100' R350m	RA100' R350m	RA100' R350m	RA100' R350m
	ILS DME	1944' (200')	1944' (200')	1944' (200')	1944' (200')
		R550m V800m	R550m V800m	R550m V800m	R550m V800m
	ALS out	1200m	1200m	1200m	1200m
	LOC DME	2150' (406')	2150' (406')	2150' (406')	2150' (406')
		1600m	1600m	1600m	2000m
	ALS out	2400m	2400m	2400m	2800m
	VOR DME	2150' (408')	2150' (408')	2150' (408')	2150' (408')
		1600m	1600m	1600m	2000m
ALS out	2400m	2400m	2400m	2800m	

CIRCLE-TO-LAND	100 KT	135 KT	180 KT	205 KT
Not authorized South of apt	2270' (528')	2300' (558')	2560' (818')	2790' (1048')
	V1600m ①	V1600m ①	V3600m	V5000m

① After LOC 09 apch, VOR DME 09 apch, LOC 27 apch or VOR DME 27 apch: V2400m.

TAKE-OFF RWY 09, 27

	Approved Operators HIRL, CL & mult. RVR req ②		RL, CL & mult RVR req ②		RL & CL ②		RL & RCLM (DAY only)		RL	
	A	B	C	D	A	B	C	D	A	B
A								250m ②		400m
B	125m							300m ②		500m
C		150m			200m			400m		600m
D		200m	250m		400m			600m		

② LVP must be in force.

LBSF/SOF
 SOFIA

JEPPESEN
 14 SEP 07 11-1 Eff 27 Sep

SOFIA, BULGARIA
 ILS DME Rwy 09

ATIS		SOFIA Approach (R)		SOFIA Tower	
124.05		123.7	129.9	118.1	120.4
LOC ISL	Final Apch Crs	GS	ILS DA(H)	Apt Elev 1742'	
110.7	091°	D4.0 ISL 3018' (1279')	1939' (200')	RWY 1739'	

MISSED APCH: Climb STRAIGHT AHEAD to D15.4 SOF, then turn RIGHT (MAX 205 KT) to VOR. Intercept R-305 SOF. At D14.8 SOF turn LEFT (MAX 220 KT) to intercept and proceed on 19.4 DME Arc SOF to enter BENIL holding, climbing to 9850'.

Alt Set: hPa Rwy Elev: 62 hPa Trans level: By ATC Trans alt: 10830'

FT/METER CONVERSION	
10830'	3300m
9850'	3000m
7550'	2300m
6890'	2100m
4110'	1250m

ISL/SOF DME	7.0/6.4	5.9/5.3	4.9/4.2	3.8/3.2	2.7/2.1	1.6/1.0
ALTITUDE	3970'	3630'	3280'	2940'	2600'	2250'

BENIL		D7.4 ISL	D4.0 ISL	D2.1 ISL	D1.4 ISL	D0.8 ISL
D20.1 ISL/D19.4 SOF	7550'	D6.8 SOF	GS 3018'	D1.5 SOF	D0.8 SOF	GS 1975'
	4020'					
	2420'					
	12.6	3.4	1.9	0.7	0.6	0.5
				MDA		
						TCH 49'
						RWY 09 1739'

Gnd speed-Kts	70	90	100	120	140	160	HIALS	D15.4 205 KT	SOF
ILS GS 3.00° or LOC Descent Grad 5.2%	377	484	538	646	753	861			
MAP at D1.4 ISL/D0.8 SOF									

ILS		STRAIGHT-IN LANDING RWY 09				CIRCLE-TO-LAND	
DA(H)	1939' (200')	LOC (GS out)		w/o D2.1 ISL/D1.5 SOF		Not authorized South of apt	
FULL	ALS out	MDA(H)	2200' (461')	MDA(H)	2420' (681')		
A						Max Kts	
B	RVR 720m	1200m	1600m	2400m	1600m	100	2270' (528') 1600m ①
C	VIS 800m	2000m	2800m	2000m	2800m	135	2300' (558') 1600m ①
D		2400m	3200m	2400m	3200m	180	2560' (818') 3600m
						205	2790' (1048') 5000m

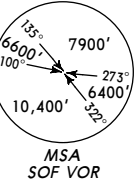
① After LOC (GS out) apch: 2400m.

CHANGES: None.

© JEPPESEN SANDERSON, INC., 2007. ALL RIGHTS RESERVED.

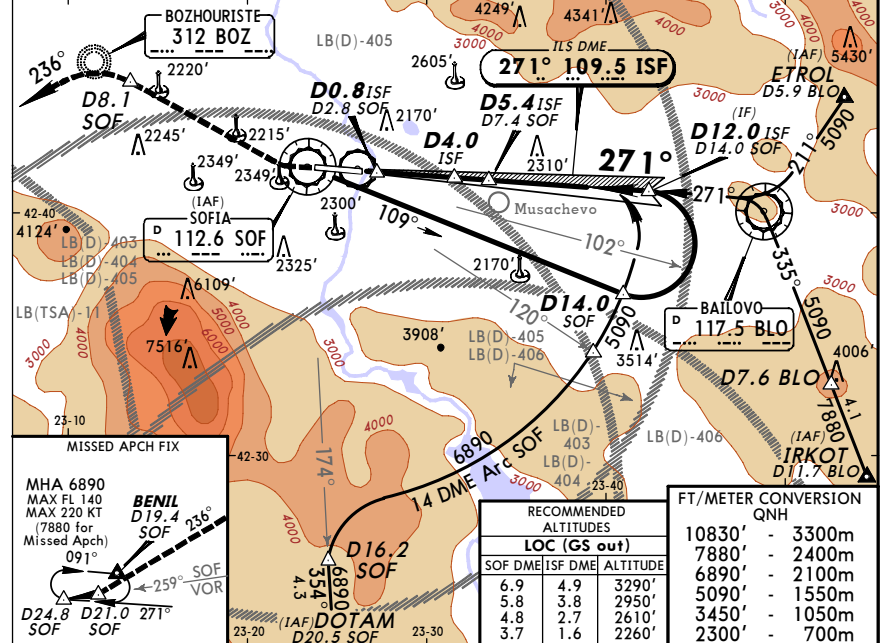
LBSF/SOF **JEPPESEN** **SOFIA, BULGARIA**
 SOFIA **14 SEP 07** **(1-2) ILS DME or LOC DME Rwy 27**
 Eff 27 Sep

ATIS 124.05		SOFIA Approach (R) 123.7 129.9		SOFIA Tower 118.1 120.4	
LOC ISF 109.5	Final Apch Crs 271°	GS D5.4 ISF 3445' (1701')	ILS DA(H) 1944' (200')	Apt Elev 1742' RWY 1744'	

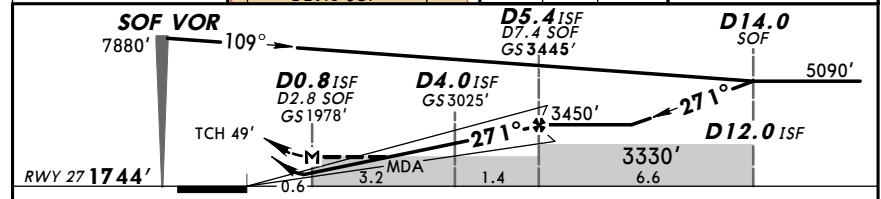


MISSED APCH: Climb STRAIGHT AHEAD to SOF VOR or 2300', whichever is later, turn RIGHT (MAX 185 KT) and climb to BOZ NDB, at D8.1 SOF turn LEFT to intercept 236° from BOZ NDB. At D21.0 SOF turn RIGHT to intercept R-259 SOF to enter BENIL holding at D24.8 SOF, climbing to 7880'.

Alt Set: hPa Rwy Elev: 62 hPa Trans level: By ATC Trans alt: 10830'
 Baseturn restricted to 215 KT.



RECOMMENDED ALTITUDES		FT/METER CONVERSION QNH	
LOC (GS out)		10830' - 3300m	
SOF DME/ISF DME	ALTITUDE	7880' - 2400m	
6.9	4.9	6890' - 2100m	
5.8	3.8	5090' - 1550m	
4.8	2.7	3450' - 1050m	
3.7	1.6	2300' - 700m	

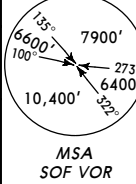


Gnd speed-Kts	70	90	100	120	140	160	HIALS-II	SOF	112.6	2300'	185 KT	BOZ
ILS GS 3.00° or	377	485	539	647	755	862	PAPI	↑	↑	↑	↑	312
LOC Descent Grad 5.2%												
MAP at D0.8 ISF/D2.8 SOF												

STRAIGHT-IN LANDING RWY 27				CIRCLE-TO-LAND			
ILS DA(H) 1944' (200')		LOC (GS out) MDA(H) 2150' (406')		Not authorized South of apt			
FULL	TDZ or CL out	ALS out	ALS out	Max Kts MDA(H)			
A				100	2270' (528')	1600m	■
B	RVR 550m	RVR 720m	1200m	135	2300' (558')	1600m	■
C	VIS 800m	VIS 800m		180	2560' (818')	3600m	
D				205	2790' (1048')	5000m	

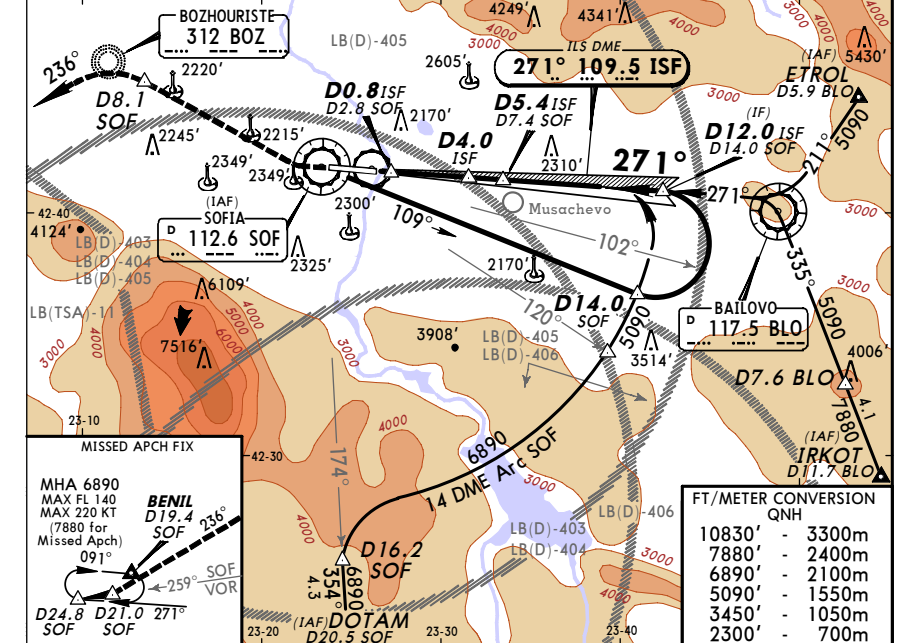
LBSF/SOF **JEPPESEN** **SOFIA, BULGARIA**
 SOFIA **14 SEP 07** **(1-2A) CAT II ILS DME Rwy 27**
 Eff 27 Sep

ATIS 124.05		SOFIA Approach (R) 123.7 129.9		SOFIA Tower 118.1 120.4	
LOC ISF 109.5	Final Apch Crs 271°	GS D5.4 ISF 3445' (1701')	CAT II ILS RA 100' DA(H) 1844' (100')	Apt Elev 1742' RWY 1744'	

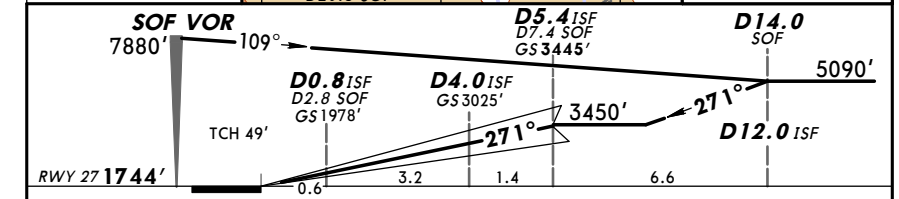


MISSED APCH: Climb STRAIGHT AHEAD to SOF VOR or 2300', whichever is later, turn RIGHT (MAX 185 KT) and climb to BOZ NDB, at D8.1 SOF turn LEFT to intercept 236° from BOZ NDB. At D21.0 SOF turn RIGHT to intercept R-259 SOF to enter BENIL holding at D24.8 SOF, climbing to 7880'.

Alt Set: hPa Rwy Elev: 62 hPa Trans level: By ATC Trans alt: 10830'
 1. Special Aircrew & Acft Certification Required. 2. Baseturn restricted to 215 KT.



RECOMMENDED ALTITUDES		FT/METER CONVERSION QNH	
LOC (GS out)		10830' - 3300m	
SOF DME/ISF DME	ALTITUDE	7880' - 2400m	
6.9	4.9	6890' - 2100m	
5.8	3.8	5090' - 1550m	
4.8	2.7	3450' - 1050m	
3.7	1.6	2300' - 700m	



Gnd speed-Kts	70	90	100	120	140	160	HIALS-II	SOF	112.6	2300'	185 KT	BOZ
ILS GS 3.00° or	377	485	539	647	755	862	PAPI	↑	↑	↑	↑	312
LOC Descent Grad 5.2%												
MAP at D0.8 ISF/D2.8 SOF												

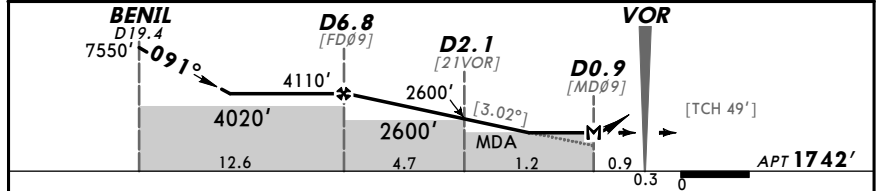
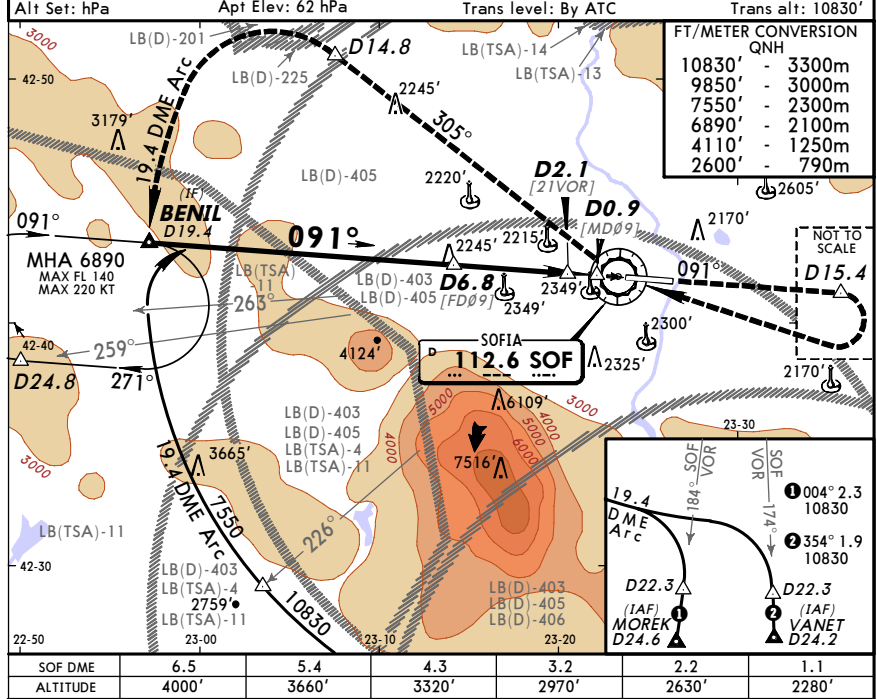
STRAIGHT-IN LANDING RWY 27				CIRCLE-TO-LAND			
CAT II ILS RA 100'		DA(H) 1844' (100')		Not authorized South of apt			
FULL	TDZ or CL out	ALS out	ALS out	Max Kts MDA(H)			
A				100	2270' (528')	1600m	■
B	RVR 550m	RVR 720m	1200m	135	2300' (558')	1600m	■
C	VIS 800m	VIS 800m		180	2560' (818')	3600m	
D				205	2790' (1048')	5000m	

LBSF/SOF
SOFIA
 14 SEP 07 (13-1) Eff 27 Sep
SOFIA, BULGARIA
VOR DME Rwy 09

ATIS 124.05		SOFIA Approach (R) 123.7 129.9		SOFIA Tower 118.1 120.4	
VOR SOF 112.6	Final ApcH Crs 091°	Procedure Alt D6.8 4110' (2368')	MDA(H) (CONDITIONAL) 2250' (508')	Apt Elev 1742'	

MISSED APCH: Climb STRAIGHT AHEAD to D15.4, then turn RIGHT (MAX 205 KT) to VOR and intercept R-305. At D14.8 turn LEFT (MAX 220 KT) to intercept and proceed on 19.4 DME Arc to enter BENIL holding, climbing to 9850'.

Alt Set: hPa Apt Elev: 62 hPa Trans level: By ATC Trans alt: 10830'



Gnd speed-Kts	70	90	100	120	140	160	HIALS PAPI	D15.4 205 KT MAX	SOF 112.6
Descent Gradient 5.28% or Descent angle [3.02°]	374	481	534	641	748	855			

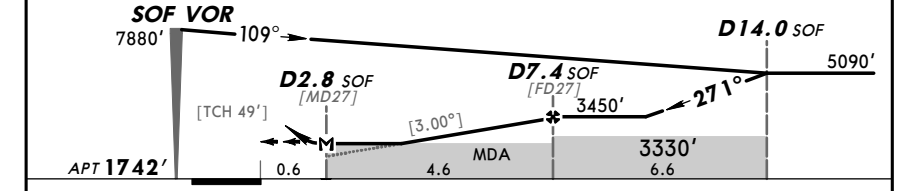
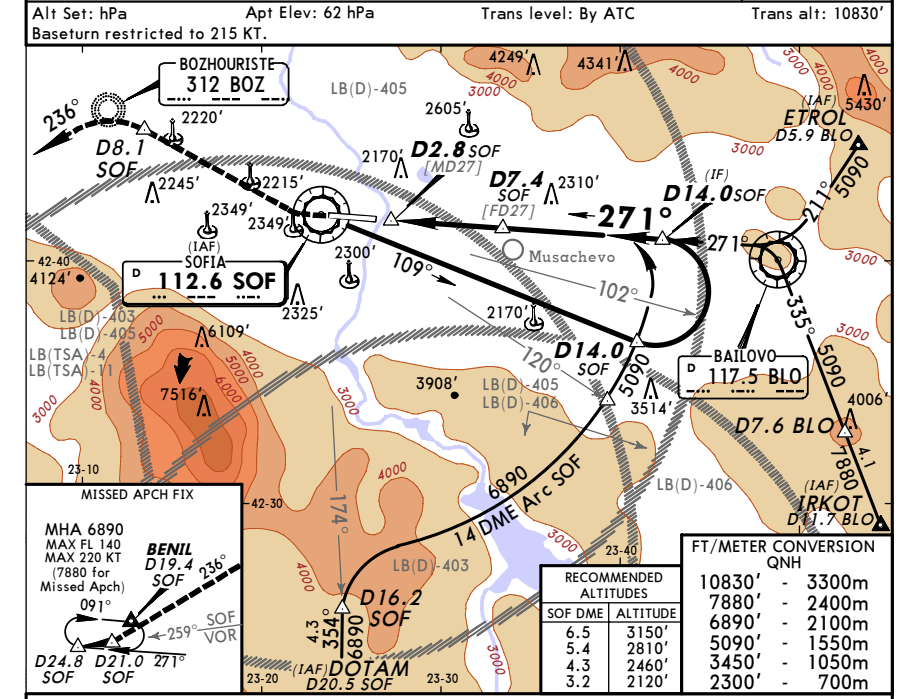
STRAIGHT-IN LANDING RWY 09 w/o D2.1 SOF				CIRCLE-TO-LAND Not authorized South of apt	
MDA(H) 2250' (508')		MDA(H) 2600' (858')		Max Kts MDA(H)	
ALS out		ALS out		100	2270' (528') 2400m
A 1600m	2400m	1600m	2400m	135	2300' (558') 2400m
B 2000m	2800m	2000m	2800m	180	2560' (818') 3600m
C 2800m	3600m	2800m	3600m	205	2790' (1048') 5000m

LBSF/SOF
SOFIA
 14 SEP 07 (13-2) Eff 27 Sep
SOFIA, BULGARIA
VOR DME Rwy 27

ATIS 124.05		SOFIA Approach (R) 123.7 129.9		SOFIA Tower 118.1 120.4	
VOR SOF 112.6	Final ApcH Crs 271°	Procedure Alt D7.4 SOF 3450' (1708')	MDA(H) 2150' (408')	Apt Elev 1742'	

MISSED APCH: Climb STRAIGHT AHEAD to SOF VOR or 2300', whichever is later, turn RIGHT (MAX 185 KT) and climb to BOZ NDB, at D8.1 SOF turn LEFT to intercept 236° from BOZ NDB. At D21.0 SOF turn RIGHT to intercept R-259 SOF to enter BENIL holding at D24.8 SOF, climbing to 7880'.

Alt Set: hPa Apt Elev: 62 hPa Trans level: By ATC Trans alt: 10830'



Gnd speed-Kts	70	90	100	120	140	160	HIALS-II PAPI	SOF 112.6	2300'	185 KT MAX	BOZ 312
Descent Gradient 5.24% or Descent angle [3.00°]	372	478	531	637	743	849					

STRAIGHT-IN LANDING RWY 27				CIRCLE-TO-LAND Not authorized South of apt	
MDA(H) 2150' (408')		MDA(H)		Max Kts MDA(H)	
ALS out		ALS out		100	2270' (528') 2400m
A 1600m		1600m	2400m	135	2300' (558') 2400m
B 2000m		2000m	2800m	180	2560' (818') 3600m
C 2800m		2800m	3600m	205	2790' (1048') 5000m