

GCXO/TFN
LOS RODEOS

JEPPESEN TENERIFE-NORTH, CANARY IS
18 AUG 06 (20-1P) Eff 31 Aug AIRPORT BRIEFING

1. GENERAL

1.1. ATIS

*ATIS 118.57

1.2. LOW VISIBILITY PROCEDURES (LVP)

1.2.1. GENERAL

Besides general procedures, Low Visibility Procedures (LVP) will be applied when:

- RVR is 800m or below.
- Ceiling is 250'/75m or below.

The appropriate ATC services will inform pilots about the application of LVP. ATIS system will provide the following message: 'LVP procedures in progress'. Any incident notified or detected that may affect the LVP as well as the variations of the operative minimum must be immediately communicated to pilots and ATC services implicated.

Low Visibility Procedures will be cancelled when reaching RVR values equal or greater than 1500m.

1.2.2. GROUND MOVEMENT

At all times pilots must be aware of the ACFT position, especially at intersections. Pilots have to make sure that taxiing is being executed under total security conditions.

In case of disorientation or in doubt, the ACFT must be stopped. ATC has to be informed immediately and a follow-me must be requested. In low visibility conditions, RWY exit routes E1, E2, E3 and E4 will be closed.

In low visibility conditions, ATC will not authorize the push-back or the TWY occupation by ACFT with wingspan equal or higher than 171'/52m, until landing by other existing traffic on final approach has been completed.

1.2.3. ARRIVALS

After landing the RWY must be vacated at the RWY end except if otherwise instructed.

- Pilot have to report RWY vacated.
- After reaching the assigned gate, pilots have to wait for a follow-me.
- Notify ATC prior leaving frequency.

1.2.4. DEPARTURES

When requesting Start-up the pilot will notify ATC the complete ACFT indicator and the occupied stand. After pilots have requested Start-up clearance the ACFT should be ready to start engines immediately or in less than 10 minutes.

1.2.5. PUSH-BACK MANEUVERS

After receiving taxi clearance pilots must be ready to push-back and taxi within 5 min.

If unable inform ATC. Push-back from adjacent stands will not be permitted at the same time.

1.2.6. COMMUNICATION FAILURE

- Departing ACFT proceed to clearance limit, hold position and wait for a follow-me.
- Arriving ACFT vacate RWY, proceed to holding position and wait for a follow-me.

1.3. PARKING INFORMATION

Push-back required for all stands.

GCXO/TFN
LOS RODEOS

JEPPESEN TENERIFE-NORTH, CANARY IS
18 AUG 06 (20-1P1) Eff 31 Aug AIRPORT BRIEFING

1. GENERAL

1.4. OTHER INFORMATION

1.4.1. GENERAL

CAUTION: Birds on APT.
RWY 30 right-hand circuit.

1.4.2. VISIBILITY

The geographic location of Tenerife-North causes a concentration of wet air masses which reach the condensation conditions at the same level of the APT elevation.

Due to this, cloud masses form over the RWY reducing the visibility. It is not strange that sector of the RWY is completely clear while visibility is almost nil at the rest of the RWY.

This kind of cloud masses passing over the APT is more frequent in the month between April and October.

2. ARRIVAL

2.1. SPEED RESTRICTION

MAX 250 KT at or below FL150 after SLP.

2.2. TAXI PROCEDURES

- All ACFT landing by RWY 30, will vacate the RWY by E-1 or E-0.
 - All ACFT landing by RWY 12, will vacate the RWY by E-3, E-4 or E-5.
- ATC could authorize to exit by other TWY whenever necessary.

2.3. OTHER INFORMATION

2.3.1. WIND PHENOMENA

Orographic conditions on Tenerife island and the APT location contribute to the appearance of windshear and turbulence phenomena in determined circumstances:

- When Northerly direction winds (between 320° and 360°) and an intensity more than 12 KT, there is the possibility of strong turbulence and windshear on the approach (short final position) and threshold of RWY 30.
- When winds with direction between 150° and 210° and an intensity more than 20 KT, there is the possibility of turbulence on the approach to RWY 12.
- When Westerly and South-westerly direction winds above 10000', it is very probably the existence of turbulence areas originated from the Teide mountain. This kind of turbulence usually appears in a sudden, violent and short way.

3. DEPARTURE

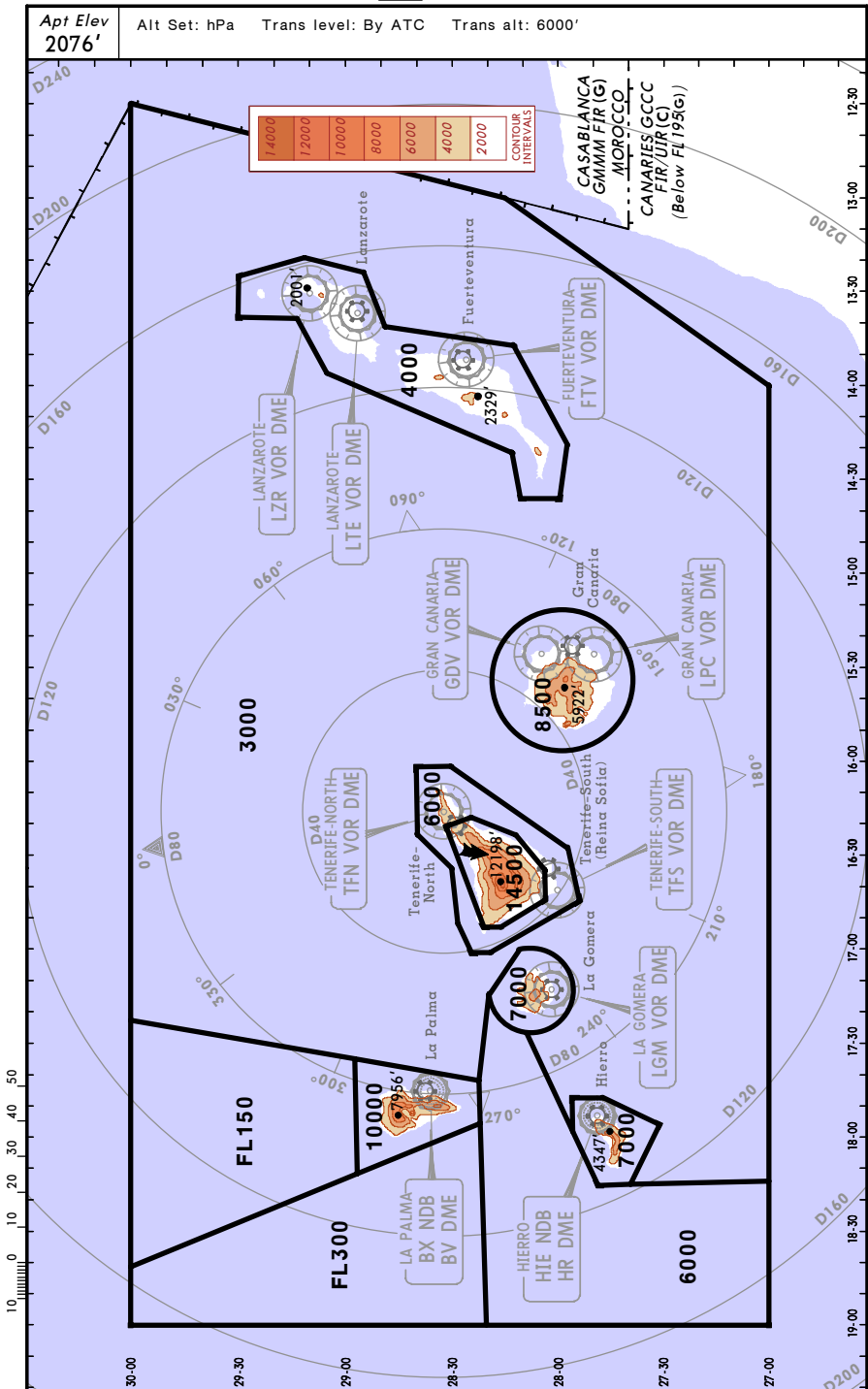
3.1. OTHER INFORMATION

3.1.1. VISIBLE DISTANCE IN RWY

Because of the RWY longitudinal profile, starting the take-off from threshold RWY 12, it is possible to lose the visual references in relation to the RWY end.

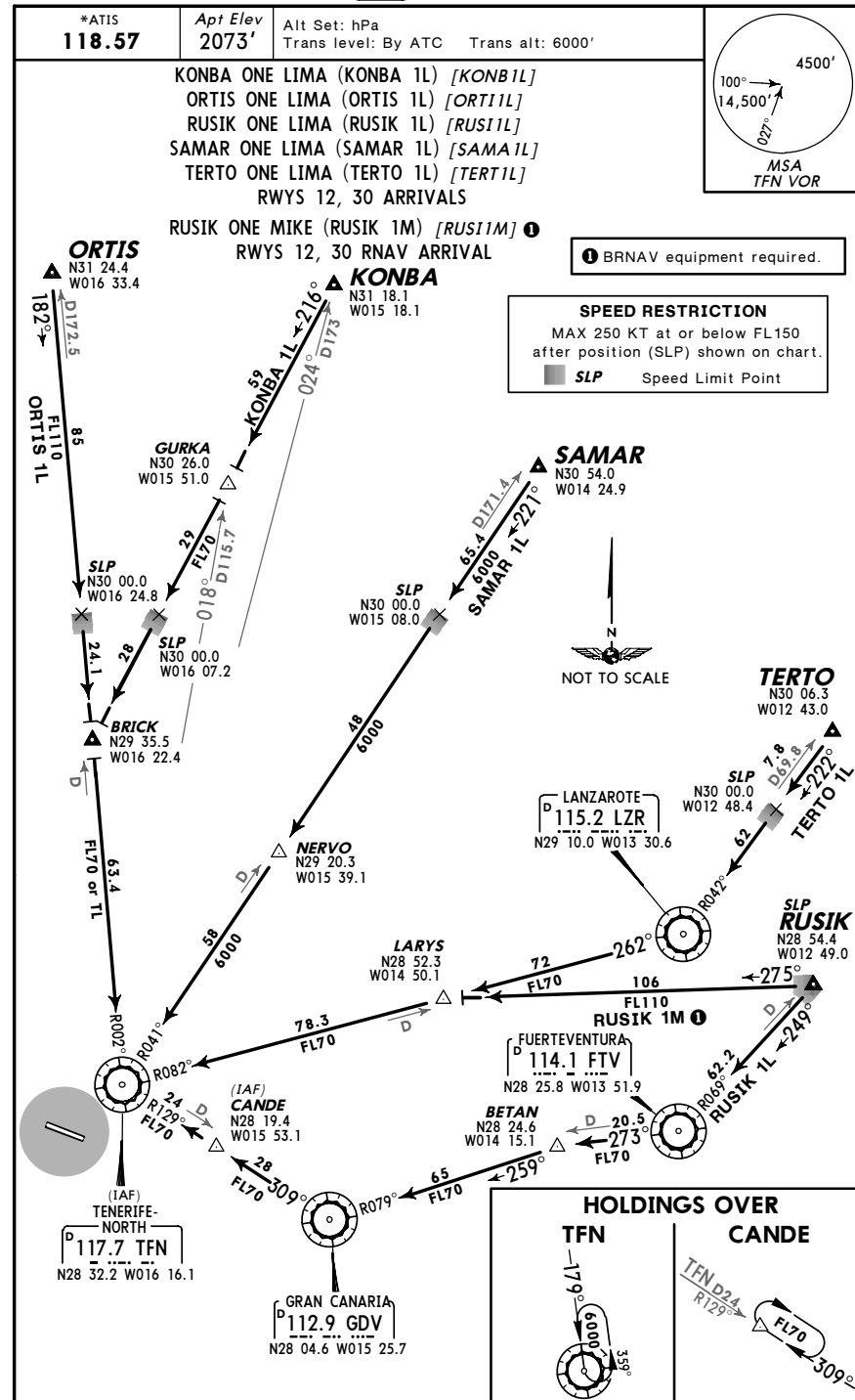
GCXO/TFN
TENERIFE-NORTH

JEPPesen TENERIFE-NORTH, CANARY IS
 26 OCT 07 (20-1R) **RADAR MINIMUM ALTITUDES**



GCXO/TFN
LOS RODEOS

JEPPesen TENERIFE-NORTH, CANARY IS
 16 JUL 04 (20-2) **STAR**



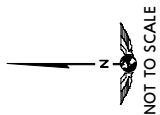
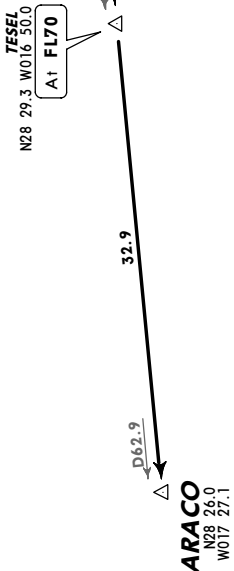
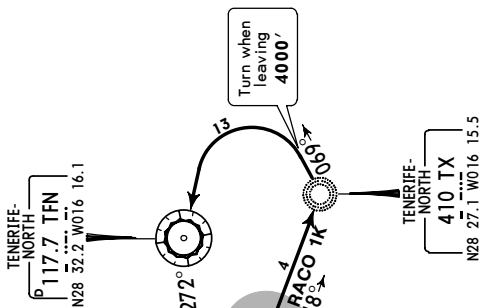
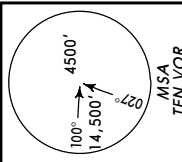
GCXO/TFN
 LOS RODEOS

JEPPESEN
 24 FEB 06 (20-3)

TENERIFE-NORTH, CANARY IS
 SID

Apt Elev 2073' Trans level: By ATC Trans alt: 6000'

ARACO ONE JULIETT (ARACO 1J) [ARAC1J]
 ARACO ONE KILO (ARACO 1K) [ARAC1K]
 RWYS 30, 12 DEPARTURES



These SIDs require a minimum climb gradient of 286' per NM (4.7%) until leaving ARACO 1J: 2600', ARACO 1K: 2800'.

Gnd speed-KT	75	100	150	200	250	300
286' per NM	357	476	714	952	1190	1428

Initial climb clearance FL70, await further clearance	
SID	ROUTING
ARACO 1J	30
ARACO 1K	12

Climb on runway heading to TFN 10 DME, turn LEFT, intercept TFN R-272 via TESEL to ARACO.
 Climb on runway heading to TX, turn LEFT, 069° bearing until leaving 4000', turn LEFT to TFN, TFN R-272 via TESEL to ARACO.

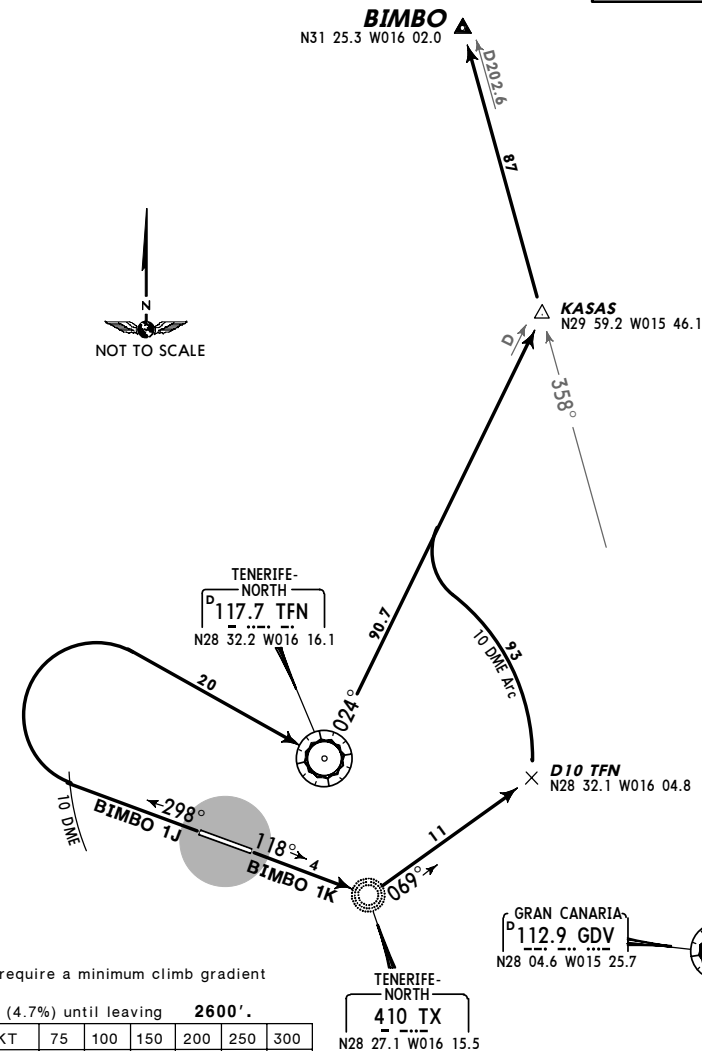
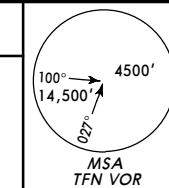
GCXO/TFN
 LOS RODEOS

JEPPESEN
 24 FEB 06 (20-3A)

TENERIFE-NORTH, CANARY IS
 SID

Apt Elev 2073' Trans level: By ATC Trans alt: 6000'

BIMBO ONE JULIETT (BIMBO 1J) [BIMB1J]
 BIMBO ONE KILO (BIMBO 1K) [BIMB1K]
 RWYS 30, 12 DEPARTURES



These SIDs require a minimum climb gradient of 286' per NM (4.7%) until leaving 2600'.

Gnd speed-KT	75	100	150	200	250	300
286' per NM	357	476	714	952	1190	1428

Initial climb clearance FL70, await further clearance		
SID	RWY	ROUTING
BIMBO 1J	30	Climb on runway heading to TFN 10 DME, turn RIGHT to TFN, TFN R-024 to KASAS, turn LEFT, intercept GDV R-358 to BIMBO.
BIMBO 1K	12	Climb on runway heading to TX, turn LEFT, 069° bearing, along TFN 10 DME arc, intercept TFN R-024 to KASAS, turn LEFT, intercept GDV R-358 to BIMBO.

GCXO/TFN
 LOS RODEOS

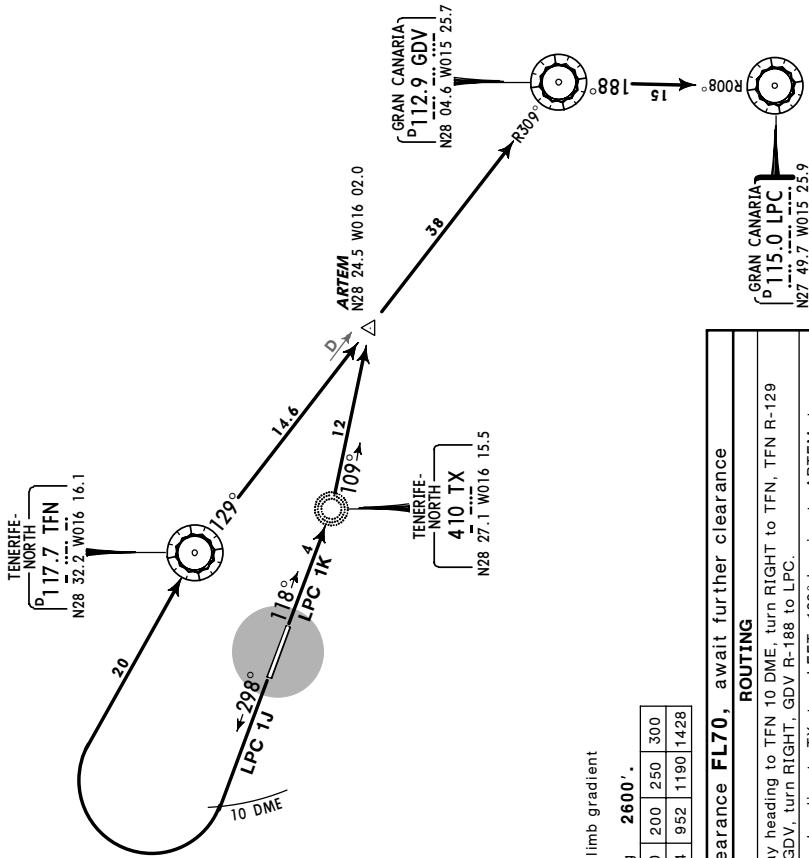
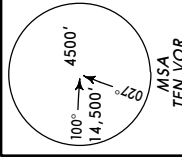
JEPPESEN TENERIFE-NORTH, CANARY IS
 24 FEB 06 (20-3B)

TENERIFE-NORTH, CANARY IS

SID

Apt Elev 2073'
 Trans level: By ATC Trans alt: 6000'

GRAN CANARIA ONE JULIETT (LPC 1J)
 GRAN CANARIA ONE KILO (LPC 1K)
 RWYS 30, 12 DEPARTURES

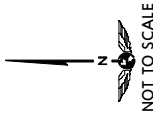


These SIDs require a minimum climb gradient of 286' per NM (4.7%) until leaving 2600'.

Gnd speed-KT	75	100	150	200	250	300
286' per NM	357	476	714	952	1190	1428

Initial climb clearance **FL70**, await further clearance

SID	RWY	ROUTING
LPC 1J	30	Climb on runway heading to TFN 10 DME, turn RIGHT to TFN, TFN R-129 via ARTEM to GDV, turn RIGHT, GDV R-188 to LPC.
LPC 1K	12	Climb on runway heading to TX, turn LEFT, 109° bearing to ARTEM, turn RIGHT, intercept TFN R-129 to GDV, turn RIGHT, GDV R-188 to LPC.



GCXO/TFN
 LOS RODEOS

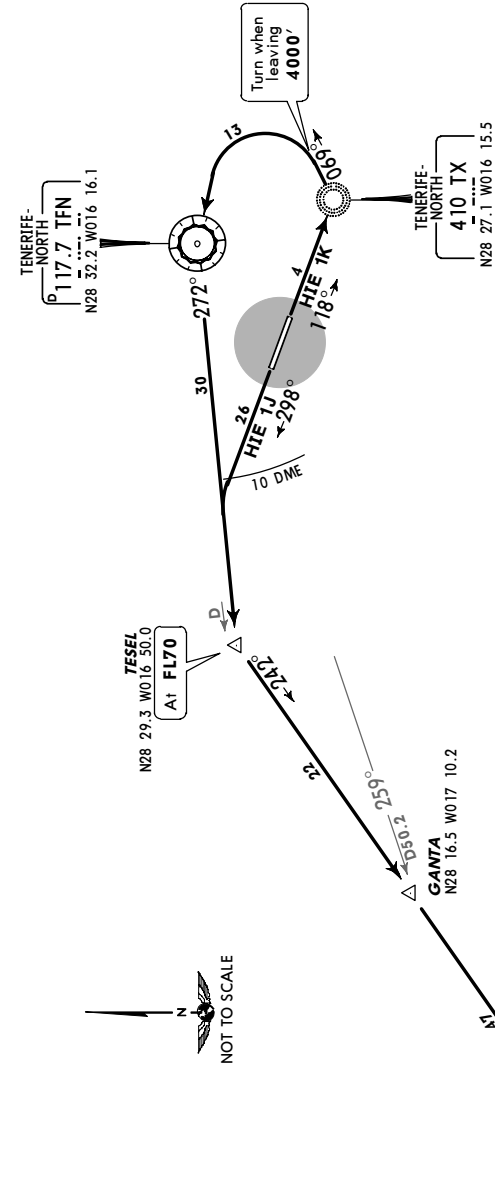
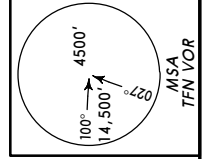
JEPPESEN TENERIFE-NORTH, CANARY IS
 24 FEB 06 (20-3C)

TENERIFE-NORTH, CANARY IS

SID

Apt Elev 2073'
 Trans level: By ATC Trans alt: 6000'

HIERRO ONE JULIETT (HIE 1J)
 HIERRO ONE KILO (HIE 1K)
 RWYS 30, 12 DEPARTURES

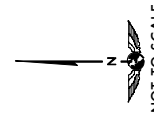


These SIDs require a minimum climb gradient of 286' per NM (4.7%) until leaving 2600'.

Gnd speed-KT	75	100	150	200	250	300
286' per NM	357	476	714	952	1190	1428

Initial climb clearance **FL70**, await further clearance

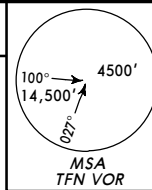
SID	RWY	ROUTING
HIE 1J	30	Climb on runway heading to TFN 10 DME, turn LEFT, intercept TFN R-272 to TESEL, turn LEFT, intercept 242° bearing via GANTA to HIE.
HIE 1K	12	Climb on runway heading to TX, turn LEFT, 069° bearing until leaving 4000', turn LEFT to TFN, TFN R-272 to TESEL, turn LEFT, intercept 242° bearing via GANTA to HIE.



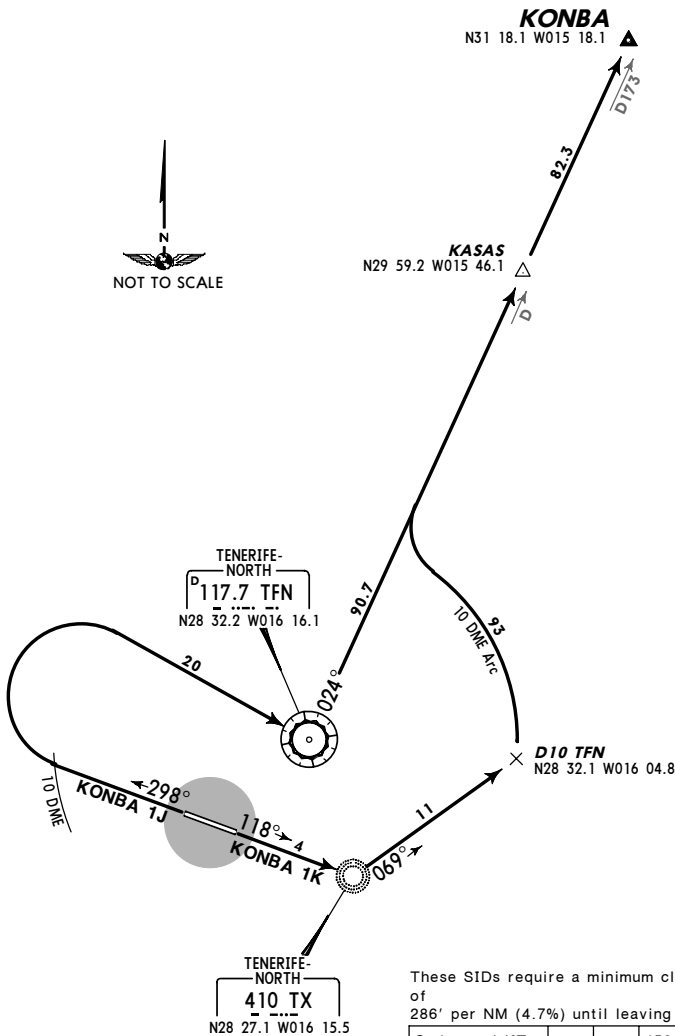
GCXO/TFN
 LOS RODEOS

JEPPESEN TENERIFE-NORTH, CANARY IS
 24 FEB 06 (20-3D) SID

Apt Elev 2073' Trans level: By ATC Trans alt: 6000'



KONBA ONE JULIETT (KONBA 1J) [KONB1J]
 KONBA ONE KILO (KONBA 1K) [KONB1K]
 RWYS 30, 12 DEPARTURES



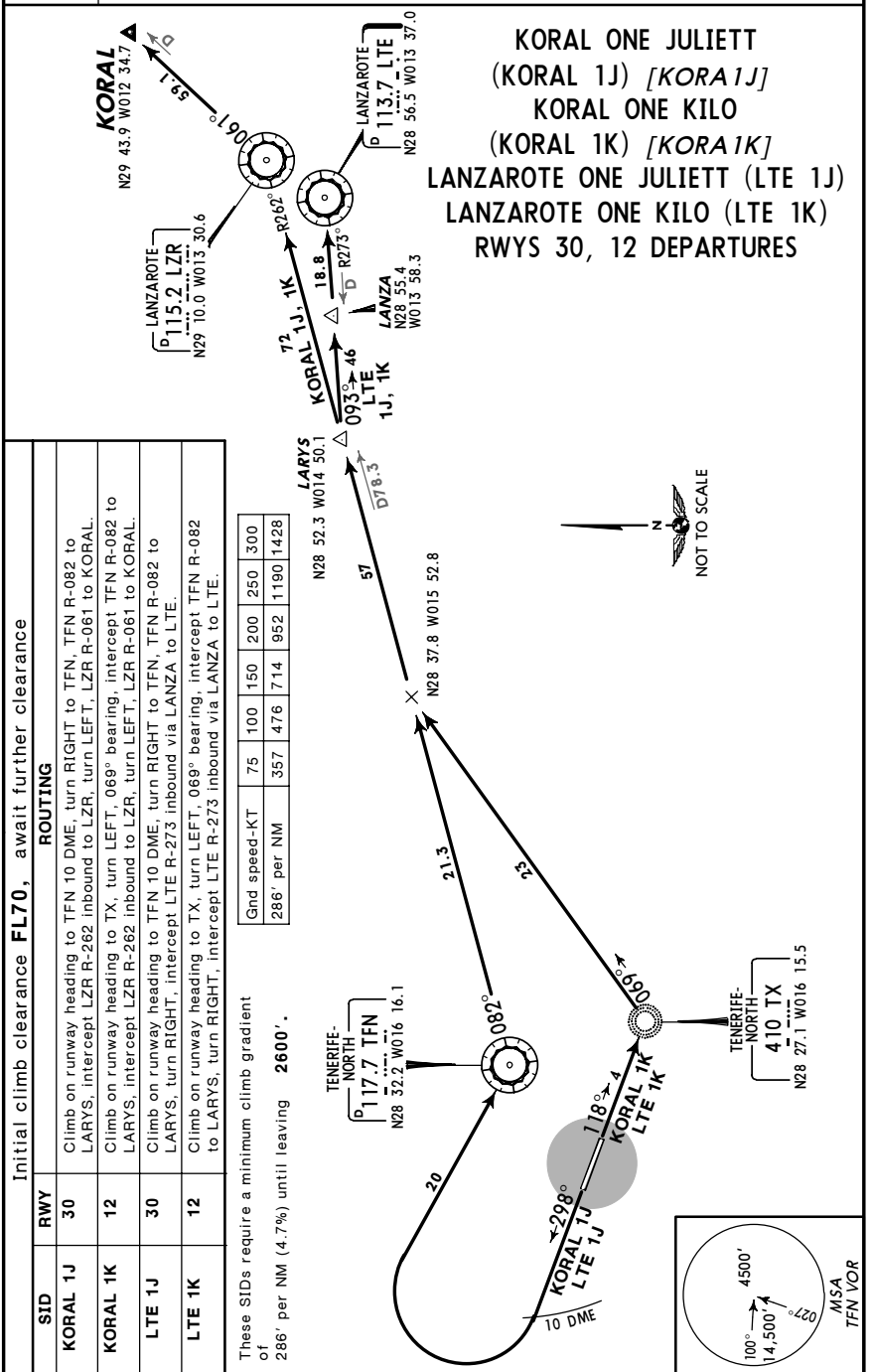
These SIDs require a minimum climb gradient of 286' per NM (4.7%) until leaving 2600'.

Initial climb clearance FL70, await further clearance		
SID	RWY	ROUTING
KONBA 1J	30	Climb on runway heading to TFN 10 DME, turn RIGHT to TFN, TFN R-024 via KASAS to KONBA.
KONBA 1K	12	Climb on runway heading to TX, turn LEFT, 069° bearing, along TFN 10 DME arc, intercept TFN R-024 via KASAS to KONBA.

GCXO/TFN
 LOS RODEOS

JEPPESEN TENERIFE-NORTH, CANARY IS
 24 FEB 06 (20-3E) SID

Apt Elev 2073' Trans level: By ATC Trans alt: 6000'



These SIDs require a minimum climb gradient of 286' per NM (4.7%) until leaving 2600'.

Initial climb clearance FL70, await further clearance	
SID	ROUTING
KORAL 1J	Climb on runway heading to TFN 10 DME, turn RIGHT to TFN, TFN R-082 to LARYS, intercept LZR R-262 inbound to LZR, turn LEFT, LZR R-061 to KORAL.
KORAL 1K	Climb on runway heading to TX, turn LEFT, 069° bearing, intercept TFN R-082 to LARYS, intercept LZR R-262 inbound to LZR, turn LEFT, LZR R-061 to KORAL.
LTE 1J	Climb on runway heading to TFN 10 DME, turn RIGHT to TFN, TFN R-082 to LARYS, turn RIGHT, intercept LTE R-273 inbound via LANZA to LTE.
LTE 1K	Climb on runway heading to TX, turn LEFT, 069° bearing, intercept TFN R-082 to LARYS, turn RIGHT, intercept LTE R-273 inbound via LANZA to LTE.

GCXO/TFN
 LOS RODEOS

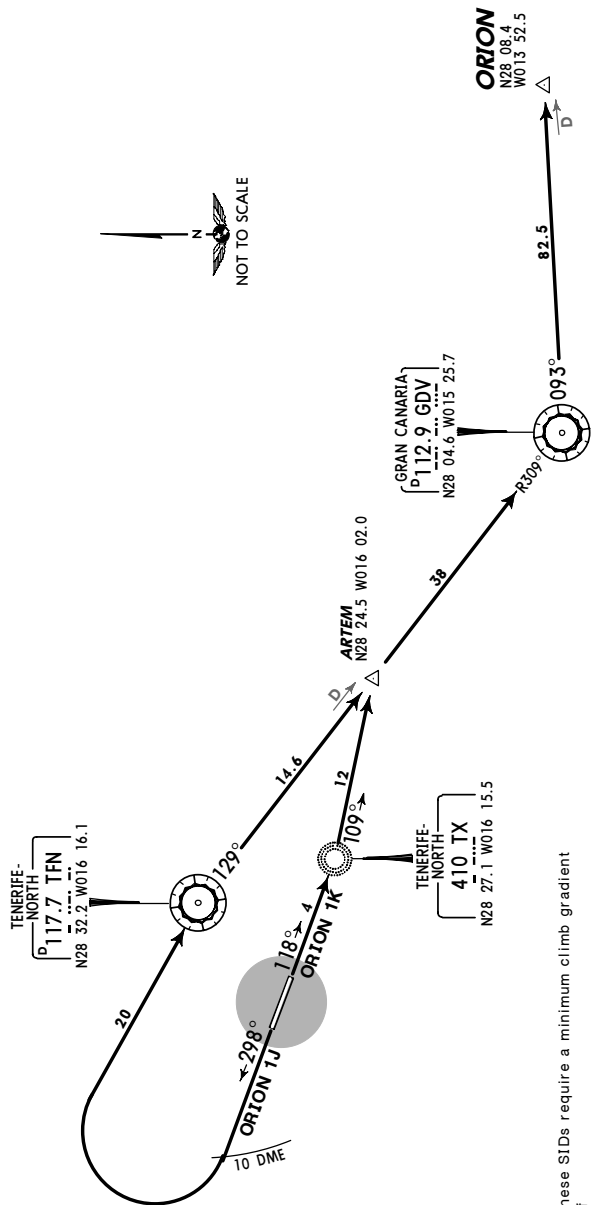
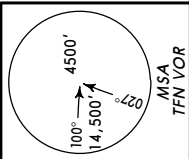
JEPPESEN
 24 FEB 06 (20-3F)

TENERIFE-NORTH, CANARY IS

SID

Apt Elev 2073' Trans level: By ATC Trans alt: 6000'

ORION ONE JULIETT (ORION 1J) [ORIO1J]
 ORION ONE KILO (ORION 1K) [ORIO1K]
 RWYS 30, 12 DEPARTURES



These SIDs require a minimum climb gradient of 286' per NM (4.7%) until leaving 2600'.

Gnd speed-KT	75	100	150	200	250	300
286' per NM	357	476	714	952	1190	1428

SID	RWY	Initial climb clearance FL70, await further clearance	
		RWY	ROUTING
ORION 1J	30		Climb on runway heading to TFN 10 DME, turn RIGHT to TFN, TFN R-129 via ARTEM to GDV, turn LEFT, GDV R-093 to ORION.
ORION 1K	12		Climb on runway heading to TX, turn LEFT, 109° bearing to ARTEM, turn RIGHT, intercept TFN R-129 to GDV, GDV R-093 to ORION.

GCXO/TFN
 LOS RODEOS

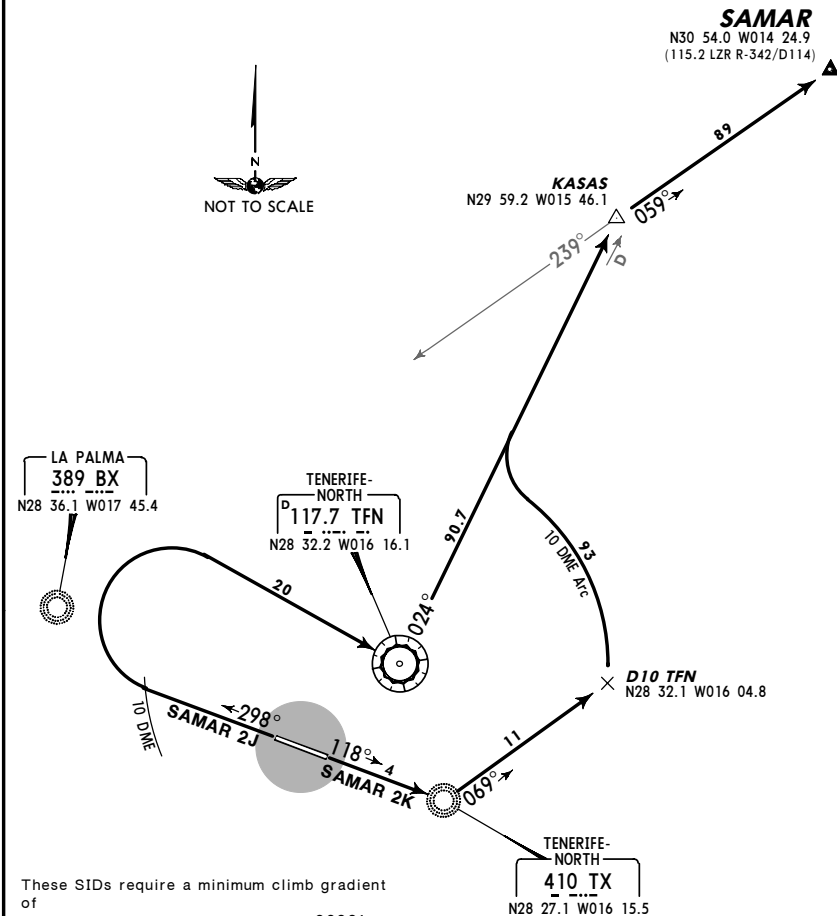
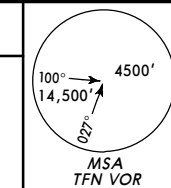
JEPPESEN
 24 FEB 06 (20-3G)

TENERIFE-NORTH, CANARY IS

SID

Apt Elev 2073' Trans level: By ATC Trans alt: 6000'

SAMAR TWO JULIETT (SAMAR 2J) [SAMA2J]
 SAMAR TWO KILO (SAMAR 2K) [SAMA2K]
 RWYS 30, 12 DEPARTURES



These SIDs require a minimum climb gradient of 286' per NM (4.7%) until leaving 2600'.

Gnd speed-KT	75	100	150	200	250	300
286' per NM	357	476	714	952	1190	1428

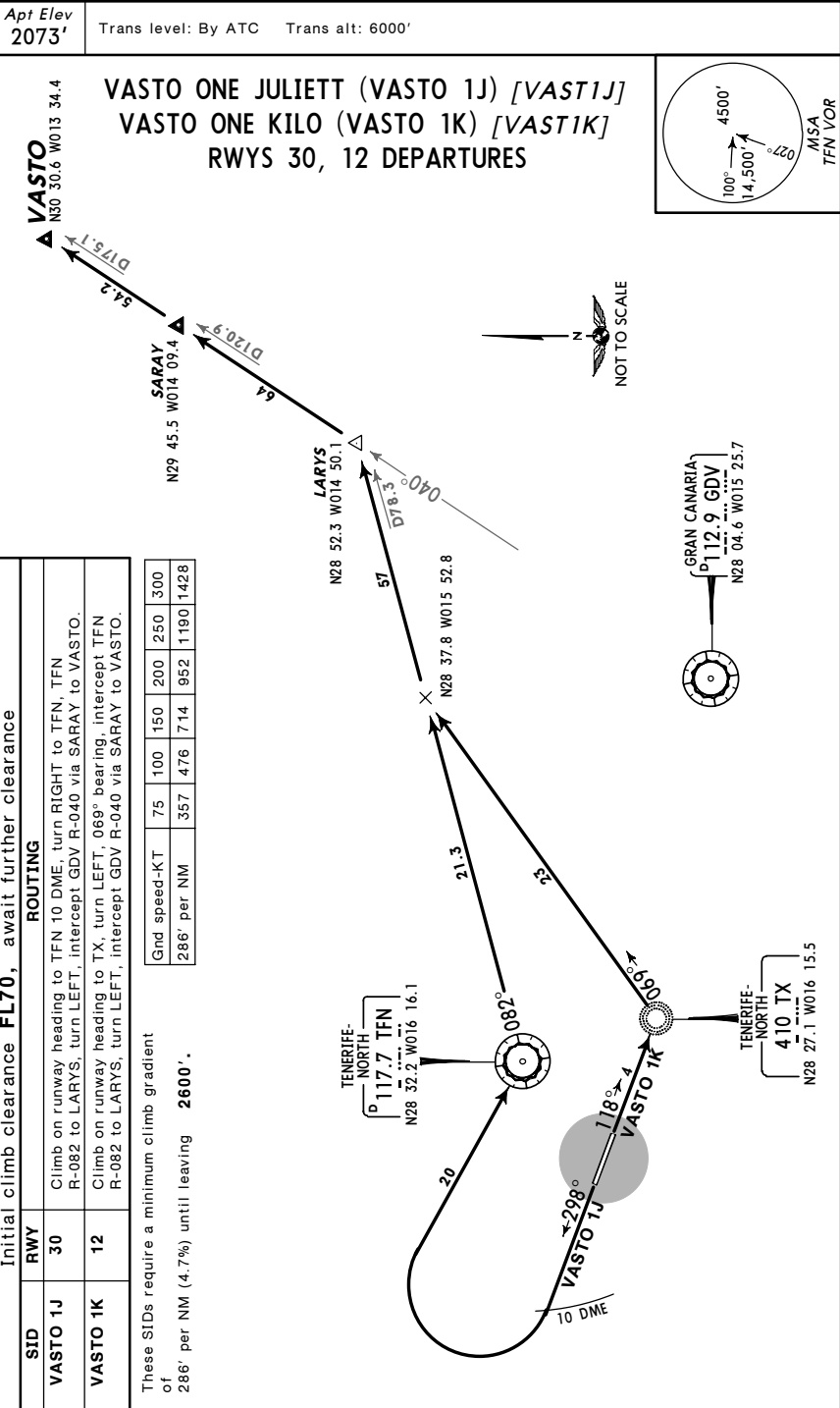
SID	RWY	Initial climb clearance FL70, await further clearance	
		RWY	ROUTING
SAMAR 2J	30		Climb on runway heading to TFN 10 DME, turn RIGHT to TFN, TFN R-024 to KASAS, turn RIGHT, intercept 059° bearing from BX to SAMAR.
SAMAR 2K	12		Climb on runway heading to TX, turn LEFT, 069° bearing, along TFN 10 DME arc, intercept TFN R-024 to KASAS, turn RIGHT, intercept 059° bearing from BX to SAMAR.

GCXO/TFN
 LOS RODEOS

JEPPESEN
 24 FEB 06 (20-3H)

TENERIFE-NORTH, CANARY IS

SID

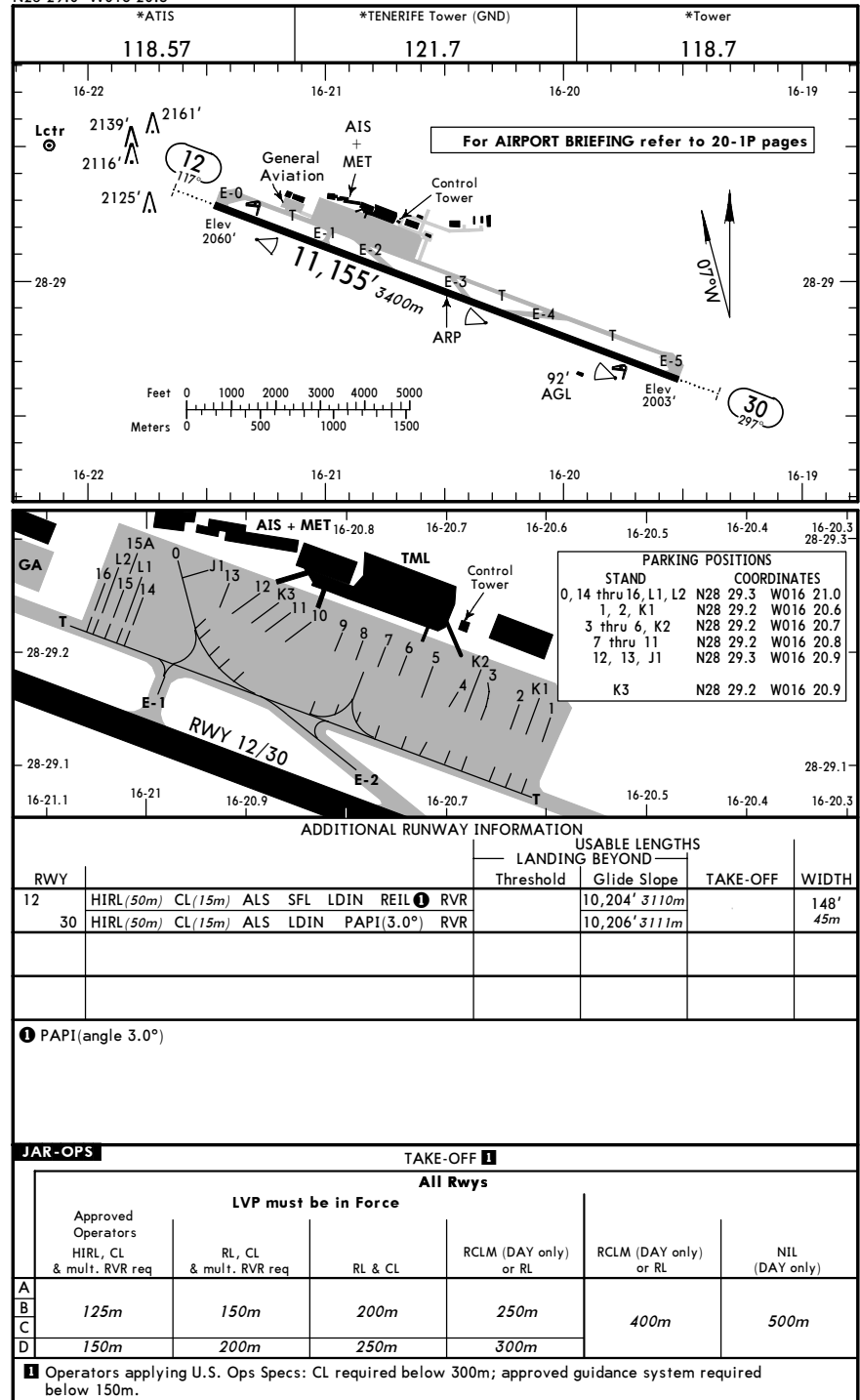


GCXO/TFN

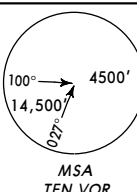
Apt Elev 2076'
 N28 29.0 W016 20.5

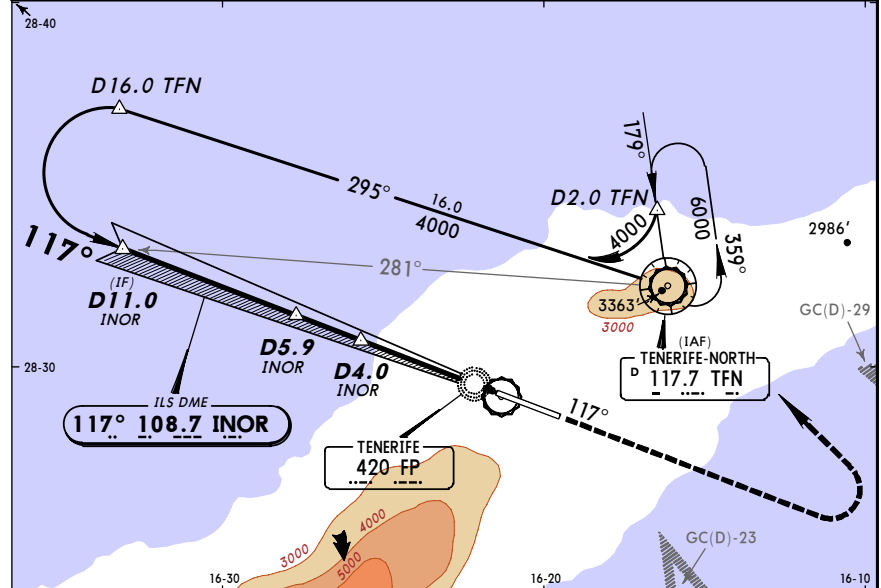
JEPPESEN TENERIFE-NORTH, CANARY IS
 15 DEC 06 (20-9) Eff 21 Dec

TENERIFE-NORTH

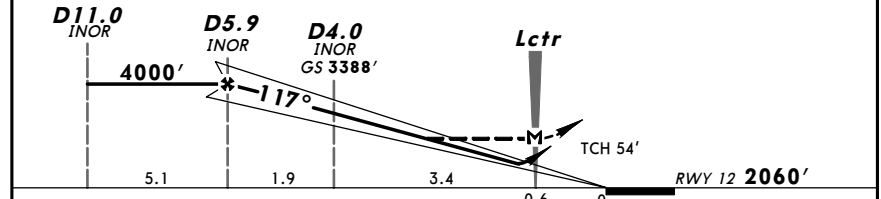


GCXO/TFN
TENERIFE-NORTH
 15 DEC 06 (21-1) Eff 21 Dec
JEPPESEN TENERIFE-NORTH, CANARY IS
ILS Rwy 12

*ATIS 118.57		*TENERIFE Approach (R) 119.7		*TENERIFE Tower 118.7		*Ground 121.7	
LOC INOR 108.7	Final Aptch Crs 117°	GS D4.0 INOR 3388' (1328')	ILS DA(H) Refer to Minimums	Apt Elev 2076' RWY 2060'			
MISSED APCH: Climb on 117° to 6000', then turn LEFT direct to VOR and join holding.							
Alt Set: hPa Rwy Elev: 73 hPa Trans level: By ATC Trans alt: 6000' 1. DME REQUIRED. 2. CAUTION: Possible false GP or LOC indications outside coverage area. 3. ILS DME reads zero at rwy 12 threshold.							



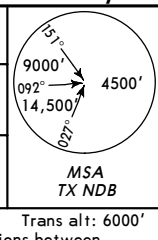
LOC (GS out)	INOR DME ALTITUDE	5.0 3710'	4.0 3390'	3.0 3070'
--------------	-------------------	-----------	-----------	-----------

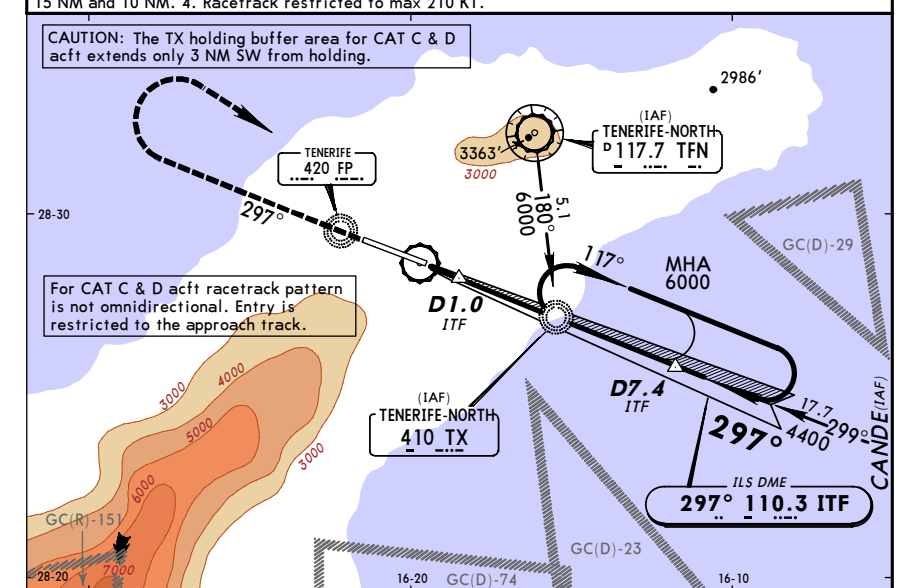


Gnd speed-Kts	70	90	100	120	140	160	ALS PAPI: PAPI 6000' on 117°
ILS GS 3.00° or LOC Descent Gradient	377	485	539	647	755	862	
MAP at Lctr							

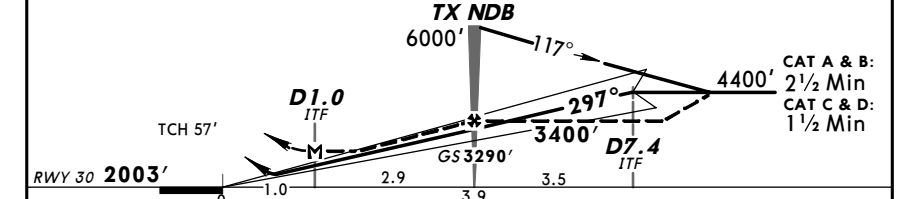
JAR-OPS STRAIGHT-IN LANDING RWY 12				CIRCLE-TO-LAND			
ILS DA(H) A: 2352' (292') C: 2372' (312') B: 2362' (302') D: 2382' (322')		LOC (GS out) MDA(H) 2920' (860')		Prohibited South of rwy			
A	RVR 900m	RVR 1200m	RVR 1500m	Max Kts	MDA(H)	VIS	
B				100	3020' (944')	1500m	
C	RVR 1000m			135	3020' (944')	1600m	
D				180	3700' (1624')	2400m	
				205	3800' (1724')	3600m	

GCXO/TFN
TENERIFE-NORTH
 15 DEC 06 (21-2) Eff 21 Dec
JEPPESEN TENERIFE-NORTH, CANARY IS
ILS Z Rwy 30

*ATIS 118.57		*TENERIFE Approach (R) 119.7		*TENERIFE Tower 118.7		*Ground 121.7	
LOC ITF 110.3	Final Aptch Crs 297°	GS TX NDB 3290' (1287')	ILS DA(H) 2490' (487')	Apt Elev 2076' RWY 2003'			
MISSED APCH: Climb STRAIGHT AHEAD to 5500', then turn RIGHT to TX NDB climbing to 6000' and join holding.							
Alt Set: hPa Rwy Elev: 71 hPa Trans level: By ATC Trans alt: 6000' 1. DME REQUIRED. 2. ILS DME reads zero at rwy 30 threshold. 3. LOC may have fluctuations between 15 NM and 10 NM. 4. Racetrack restricted to max 210 KT.							



LOC (GS out)	ITF DME ALTITUDE	2.0 2750'	3.0 3100'
--------------	------------------	-----------	-----------



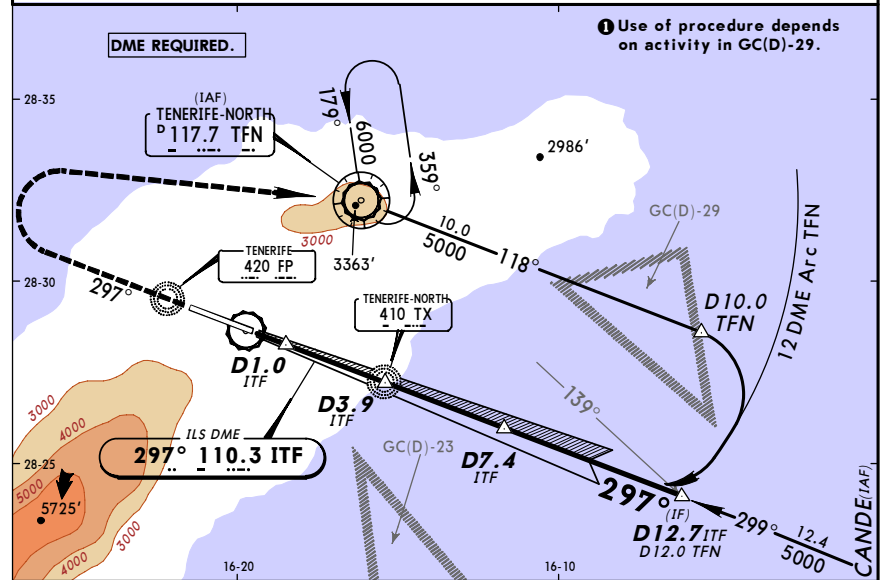
Gnd speed-Kts	70	90	100	120	140	160	ALS PAPI: PAPI 5500'
ILS GS 3.00° or LOC Descent Gradient	377	485	539	647	755	862	
MAP at D1.0 ITF							

JAR-OPS STRAIGHT-IN LANDING RWY 30				CIRCLE-TO-LAND			
ILS DA(H) 2490' (487')		LOC (GS out) MDA(H) 2510' (507')		Prohibited South of rwy			
A		RVR 1200m	RVR 1500m	Max Kts	MDA(H)	VIS	
B				100	2940' (864')	1500m	
C	RVR 1000m			135	2990' (914')	1600m	
D				180	3700' (1624')	2400m	
				205	3800' (1724')	3600m	

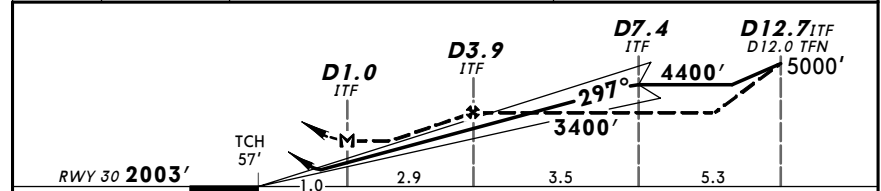
GCXO/TFN
TENERIFE-NORTH 15 DEC 06 (21-3) Eff 21 Dec
ILS Y Rwy 30

*ATIS 118.57	*TENERIFE Approach (R) 119.7	*TENERIFE Tower 118.7	*Ground 121.7
LOC ITF 110.3	Final Apch Crs 297°	GS D7.4 ITF 4400' (2397')	ILS DA(H) 2490' (487')
Apt Elev 2076'			RWY2003'

MISSED APCH: Climb on 297° to 5500', then turn RIGHT direct to VOR climbing to 6000' and join holding.
 Alt Set: hPa Rwy Elev: 71 hPa Trans level: By ATC Trans alt: 6000'
 1. CAUTION: GS apch is affected by disturbances on the last 1.3 NM of final (descent from 2469' to THR).
 2. ILS DME reads zero at rwy 30 threshold. 3. LOC may have fluctuations between 15 NM and 10 NM.



LOC (GS out)	ITF DME ALTITUDE	2.0 2750'	3.0 3090'
--------------	------------------	-----------	-----------



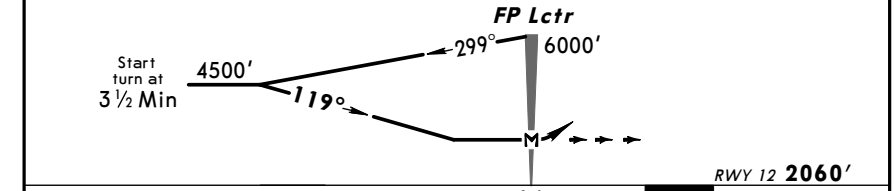
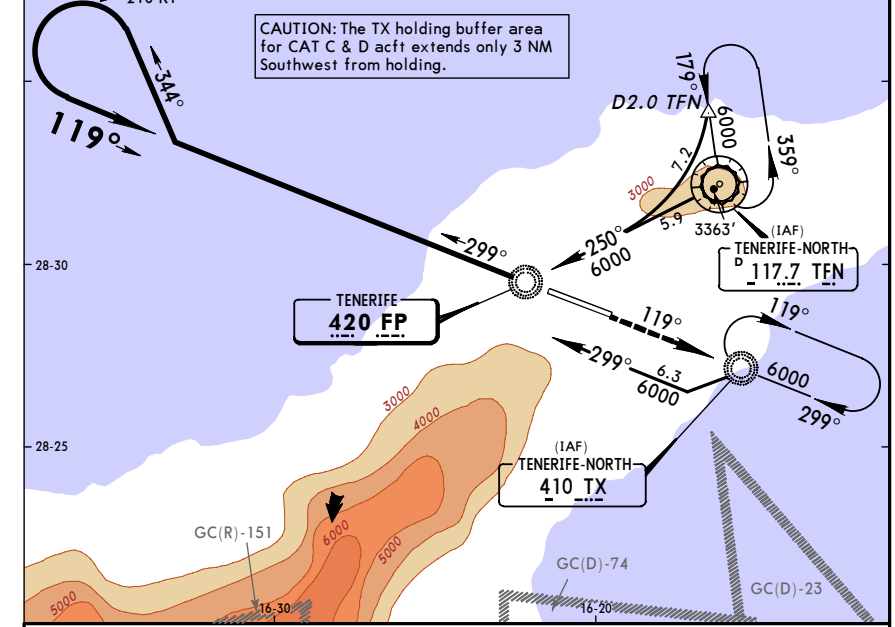
Gnd speed-Kts	70	90	100	120	140	160	ALS	5500'	297°
ILS GS	3.00°	377	485	539	647	755	PAPI	PAPI	
LOC Descent Gradient 5.7%	404	520	577	693	808	924			

JAR-OPS STRAIGHT-IN LANDING RWY 30		CIRCLE-TO-LAND	
ILS		Prohibited South of rwy	
LOC (GS out)		Max Kts	
DA(H) 2490' (487')	MDA(H) 2510' (507')	100	2940' (864')
FULL	ALS out	135	2990' (914')
		180	3700' (1624')
		205	3800' (1724')
A	RVR 1000m		1500m
B	RVR 1200m		1600m
C	RVR 1800m		2400m
D	RVR 2000m		3600m

GCXO/TFN
TENERIFE-NORTH 15 DEC 06 (26-1) Eff 21 Dec
LOCATOR Rwy 12

*ATIS 118.57	*TENERIFE Approach (R) 119.7	*TENERIFE Tower 118.7	*Ground 121.7
Lctr FP 420	Final Apch Crs 119°	Minimum Alt No FAF	MDA(H) 2920' (860')
Apt Elev 2076'			RWY2060'

MISSED APCH: Climb STRAIGHT AHEAD to 6000' and rejoin the TX NDB holding.
 Alt Set: hPa Rwy Elev: 73 hPa Trans level: By ATC Trans alt: 6000'
 1. DME REQUIRED. 2. Final approach track offset 2° from rwy centerline.
 MSA TFN VOR

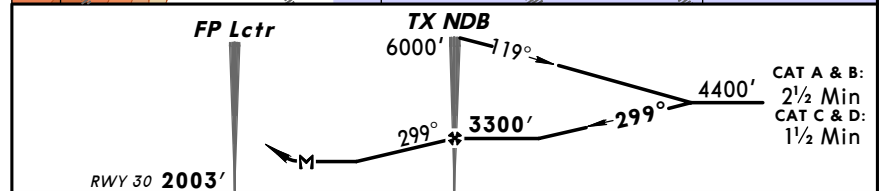
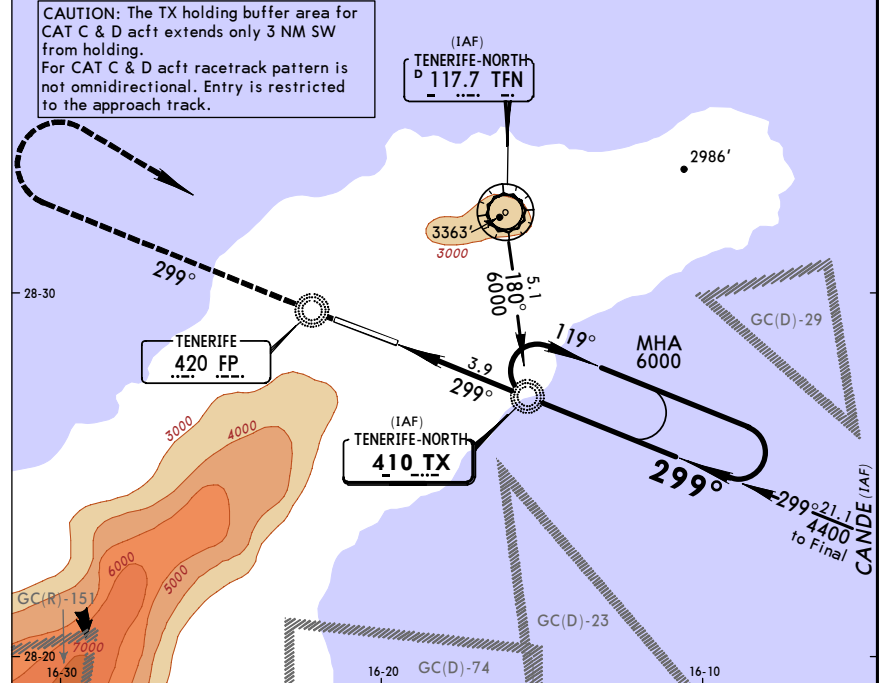
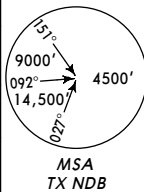


Start turn at 4500'	6000'	ALS	6000'
119°	299°	REIL	PAPI

JAR-OPS STRAIGHT-IN LANDING RWY 12		CIRCLE-TO-LAND	
MDA(H) 2920' (860')		Prohibited South of rwy	
ALS out		Max Kts	
		100	3020' (944')
		135	3020' (944')
		180	3700' (1624')
		205	3800' (1724')
A	RVR 1500m		1500m
B	RVR 1500m		1600m
C	RVR 2000m		2400m
D	RVR 2000m		3600m

GCXO/TFN
TENERIFE-NORTH 15 DEC 06 (26-2) Eff 21 Dec
JEPPESEN TENERIFE-NORTH, CANARY IS
NDB Z Rwy 30

*ATIS 118.57	*TENERIFE Approach (R) 119.7	*TENERIFE Tower 118.7	*Ground 121.7
NDB TX 410	Final Apch Crs 299°	Minimum Alt TX NDB 3300' (1297')	MDA(H) 2870' (867')
MISSED APCH: Climb on 299° via FP Lctr to 5500'. Turn RIGHT direct to TX NDB climbing to 6000' and join holding.		Apt Elev 2076' RWY 2003'	
Alt Set: hPa Rwy Elev: 71 hPa		Trans level: By ATC Trans alt: 6000'	
1. DME REQUIRED. 2. Dual ADF receiver required. 3. Racetrack restricted to max 210 KT. 4. Final approach track offset 2° from rwy centerline.			

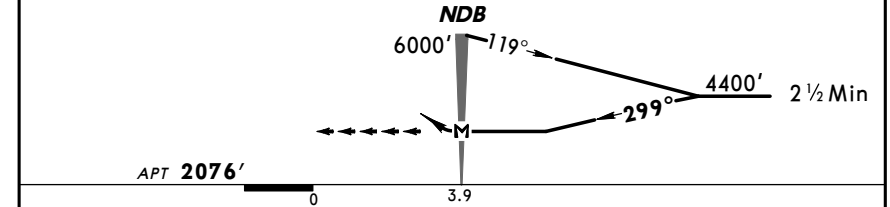
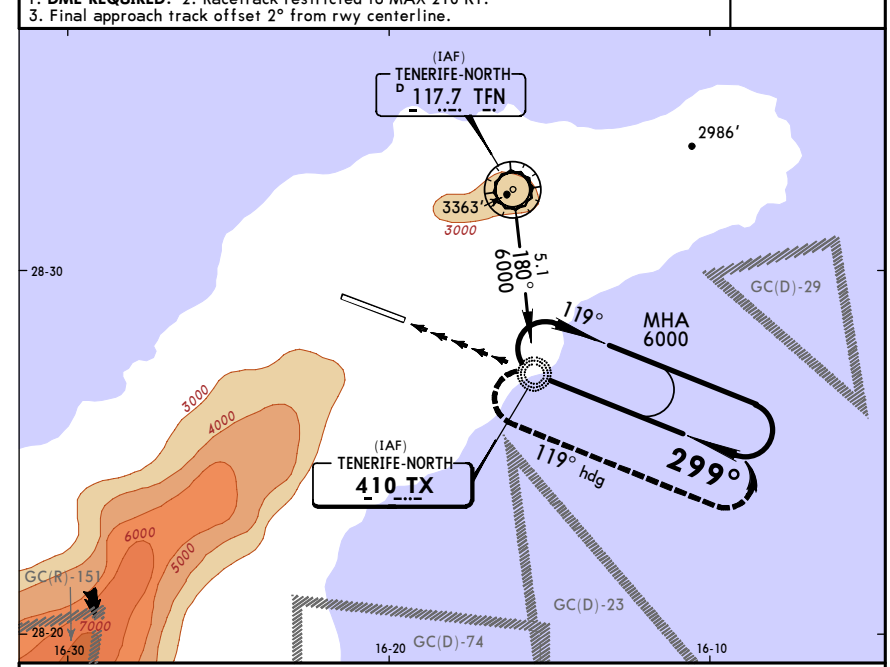
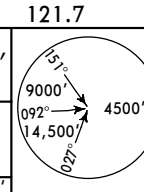


Gnd speed-Kts	70	90	100	120	140	160	ALS 5500' via FP on 299° PAPI: PAPI
Descent Gradient 5.3%	376	483	537	644	751	859	
TX NDB to MAP	3.9	3:21	2:36	2:20	1:57	1:40	

JAR-OPS STRAIGHT-IN LANDING RWY 30		CIRCLE-TO-LAND	
MDA(H) 2870' (867')		Prohibited South of rwy	
	ALS out	Max Kts	MDA(H) VIS
A		100	3020' (944') 1500m
B	RVR 1500m	135	3020' (944') 1600m
C		180	3700' (1624') 2400m
D	RVR 2000m	205	3800' (1724') 3600m

GCXO/TFN
TENERIFE-NORTH 15 DEC 06 (26-3) Eff 21 Dec
JEPPESEN TENERIFE-NORTH, CANARY IS
NDB Y Rwy 30

*ATIS 118.57	*TENERIFE Approach (R) 119.7	*TENERIFE Tower 118.7	*Ground 121.7
NDB TX 410	Final Apch Crs 299°	Minimum Alt No FAF 3300' (1224')	MDA(H) 3300' (1224')
MISSED APCH: Turn LEFT (MAX 150 KT) onto heading 119° climbing to 5000', then turn LEFT onto 299° to NDB climbing to 6000' and join holding.		Apt Elev 2076'	
Alt Set: hPa Rwy Elev: 74 hPa		Trans level: By ATC Trans alt: 6000'	
1. DME REQUIRED. 2. Racetrack restricted to MAX 210 KT. 3. Final approach track offset 2° from rwy centerline.			



ALS	119° hdg	150 KT MAX	5000'
PAPI: PAPI	LT		

JAR-OPS STRAIGHT-IN LANDING RWY 30		CIRCLE-TO-LAND	
MDA(H) 2870' (867')		Prohibited South of rwy	
	ALS out	Max Kts	MDA(H) VIS
A		100	3300' (1224') 1500m
B	RVR 1500m	135	3300' (1224') 1600m
C			
D	RVR 2000m		NOT APPLICABLE