

Page 1

Changed chart(s) since Disc 19-2008

ADD = Added chart, REV = Revised chart, DEL = Deleted chart.

| ACT | PROCEDURE IDENT | INDEX | REV DATE | EFF DATE |
|-----|-----------------|-------|----------|----------|
|-----|-----------------|-------|----------|----------|

No revision activity since Disc 19-2008

TERMINAL CHART NOTAMS

No Chart NOTAMs for Airport SKCG

Chart NOTAMs for Country COL

Type: Gen Tmnl

Effectivity: Permanent

Begin Date: Immediately

End Date: No end date

Colombia has removed the Ceiling requirement from charted weather minimums, except for IFR Departures from apts where no SID is published. Charts will be revised only when other changes are received.

General Info

Cartagena, COL

N 10° 26.5' W 75° 30.8' Mag Var: 5.1°W

Elevation: 3'

Public, IFR, Control Tower, Rotating Beacon, Customs

Fuel: 100-130

Repairs: Minor Engine, Major Airframe

Time Zone Info: Bogota, Lima, Quito Time GMT-5:00 no DST

Runway Info

Runway 01-19 8530' x 148' asphalt

Runway 01 (5.0°M) TDZE 4'

Lights: Edge

Stopway Distance 197'

Runway 19 (185.0°M) TDZE 3'

Lights: Edge

Stopway Distance 197'

Communications Info

Rafael Nunez Tower **118.3**

Barranquilla Approach Control **119.1**

Notebook Info

SKCG/CTG
RAFAEL NUNEZ

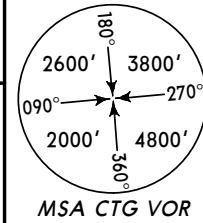
JEPPESEN
21 SEP 07 **10-3**

CARTAGENA, COLOMBIA

SID

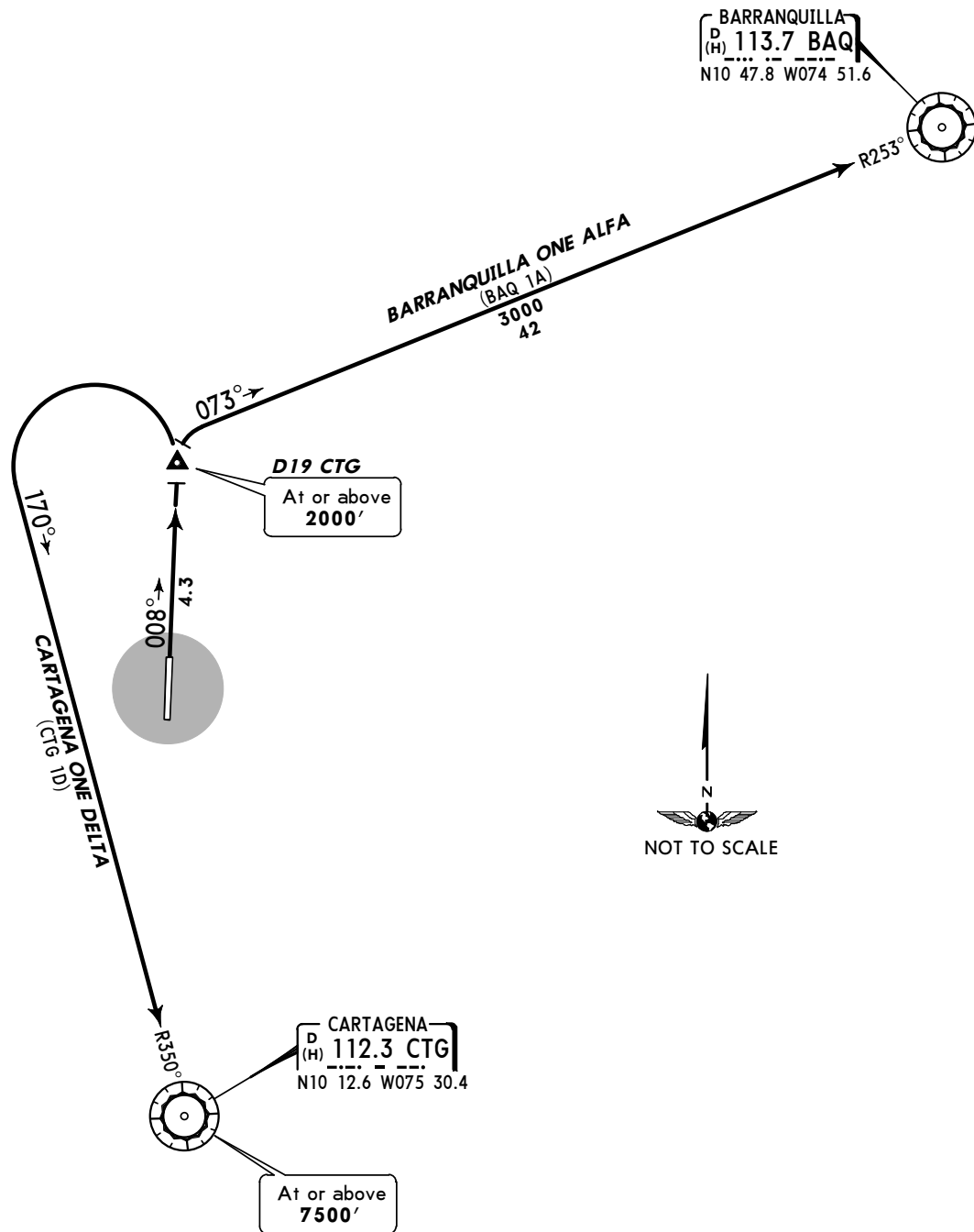
Apt Elev
4'

Trans level: FL190 Trans alt: 18000'



**BARRANQUILLA ONE ALFA (BAQ 1A),
CARTAGENA ONE DELTA (CTG 1D) DEPARTURES**
(RWY 01)

BARRANQUILLA
D (H) 113.7 BAQ
N10 47.8 W074 51.6



These SIDs require the following climb gradients:
3.3% and 7.5% (Air Traffic Services).

| Gnd speed-KT | 75 | 100 | 150 | 200 | 250 | 300 |
|----------------|-----|-----|------|------|------|------|
| 3.3% V/V (fpm) | 251 | 334 | 501 | 668 | 835 | 1003 |
| 7.5% V/V (fpm) | 570 | 760 | 1139 | 1519 | 1899 | 2279 |

SKCG/CTG
RAFAEL NUNEZ

JEPPESEN

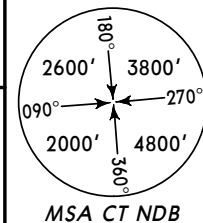
CARTAGENA, COLOMBIA

21 SEP 07 **(10-3A)**

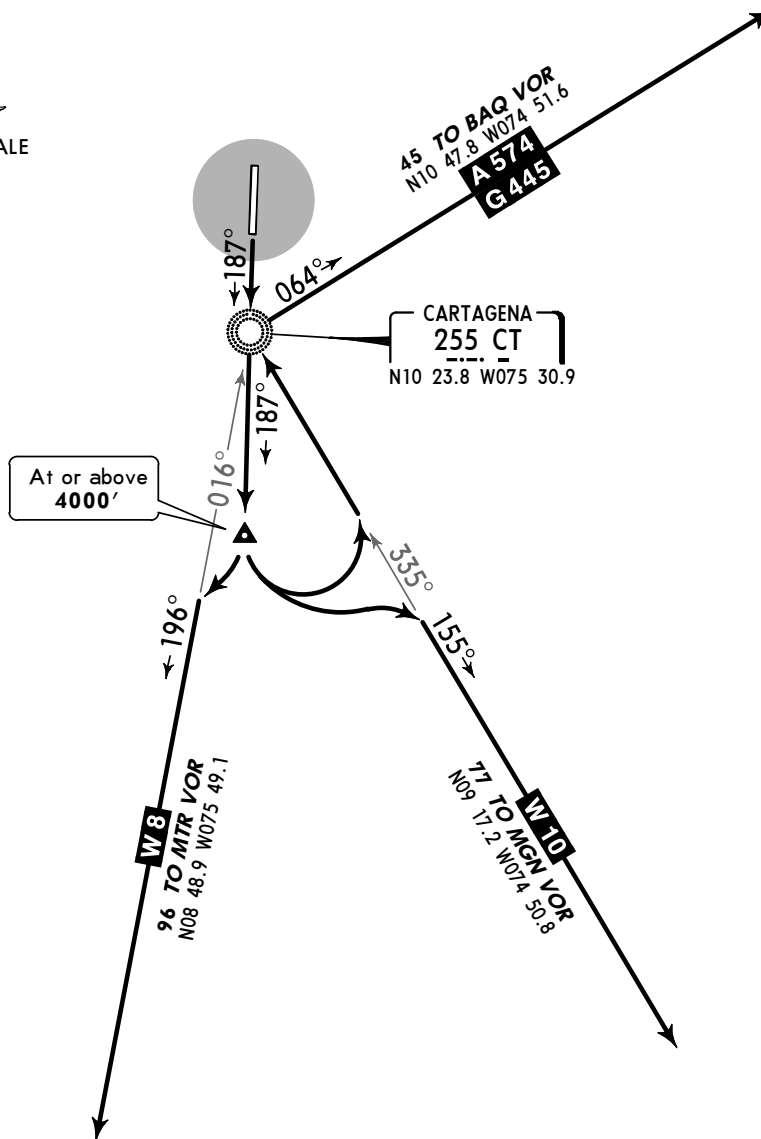
SID

Apt Elev
4'

Trans level: FL190 Trans alt: 18000'



CARTAGENA ONE CHARLIE DEPARTURE (CTG 1C)
(RWY 19)



Direct distance from Rafael Nunez Apt to:
CT 3 NM

This SID requires the following climb gradients:
8.0% until crossing **4000'**, then 3.3%.

| Gnd speed-KT | 75 | 100 | 150 | 200 | 250 | 300 |
|----------------|-----|-----|------|------|------|------|
| 3.3% V/V (fpm) | 251 | 334 | 501 | 668 | 835 | 1003 |
| 8.0% V/V (fpm) | 608 | 810 | 1215 | 1620 | 2025 | 2430 |

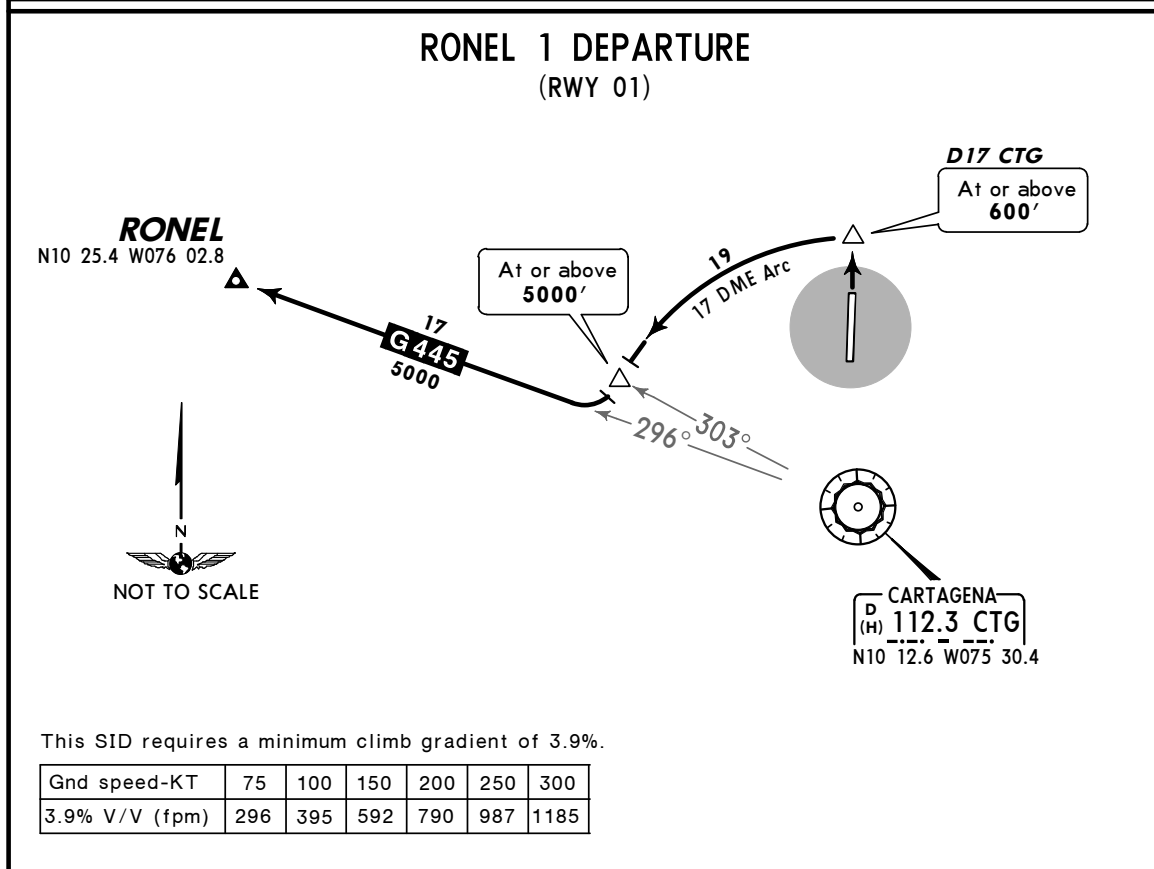
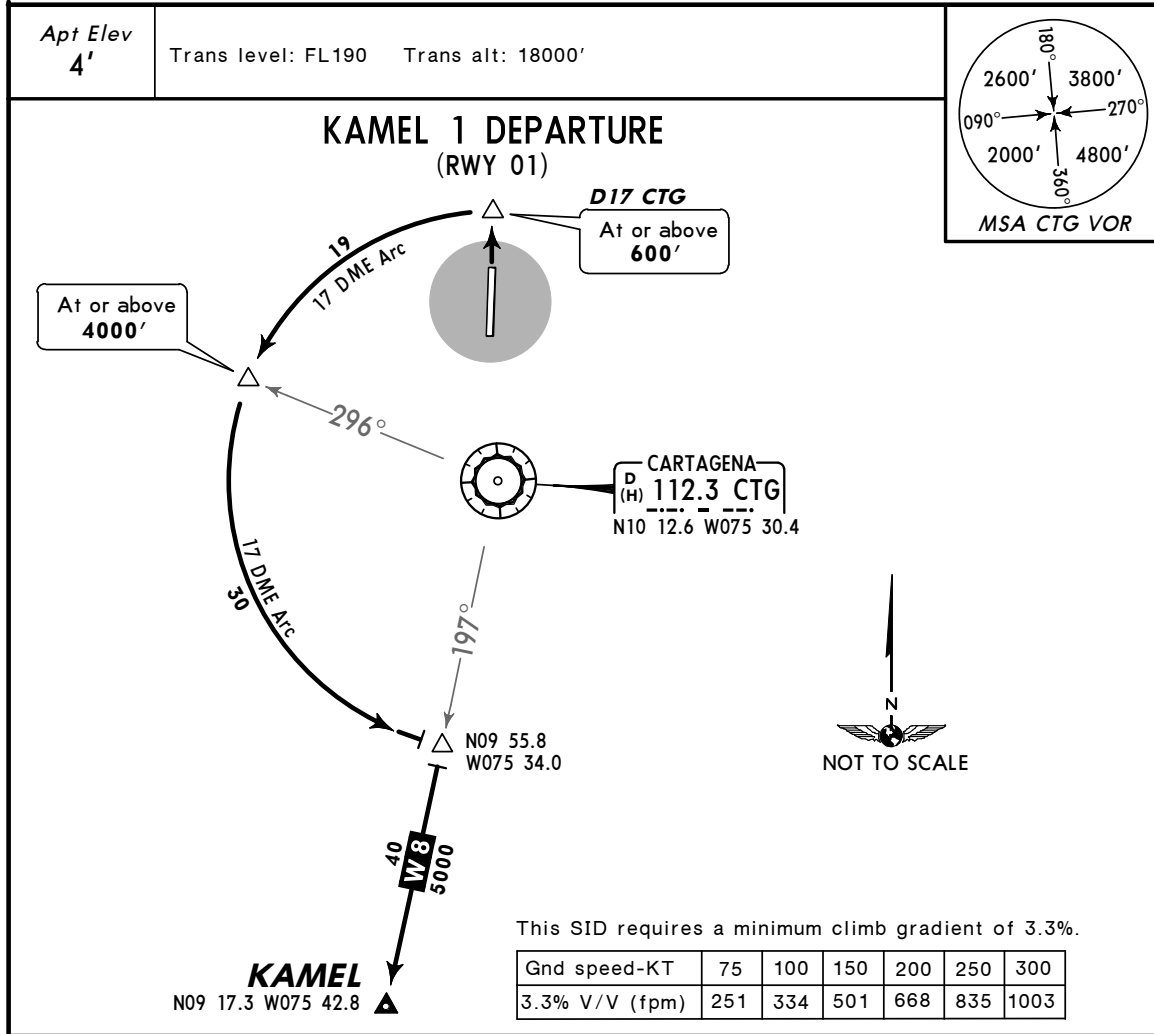
SKCG/CTG
RAFAEL NUNEZ

JEPPESEN

CARTAGENA, COLOMBIA

21 SEP 07 **10-3B**

SID



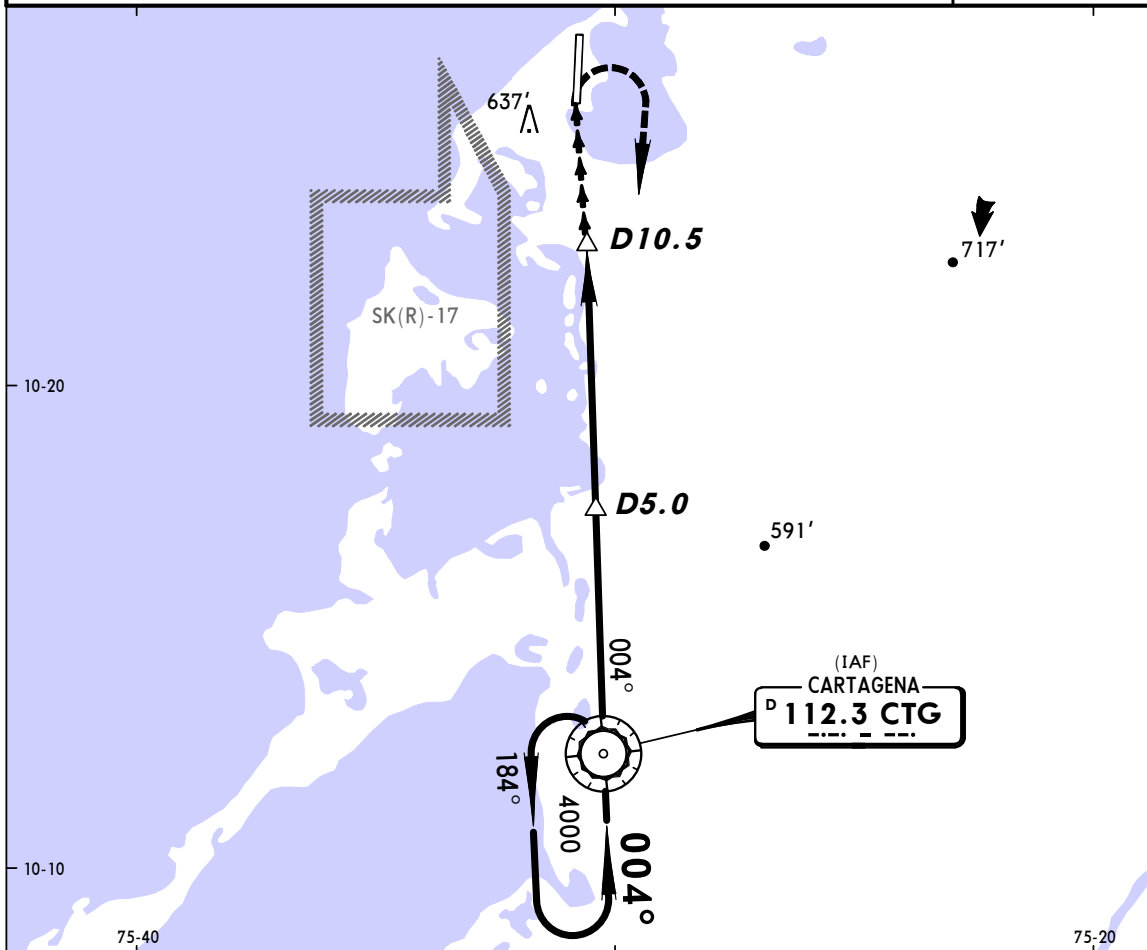
SKCG/CTG
RAFAEL NUNEZ

JEPPESEN
10 AUG 07 **(13-1)**

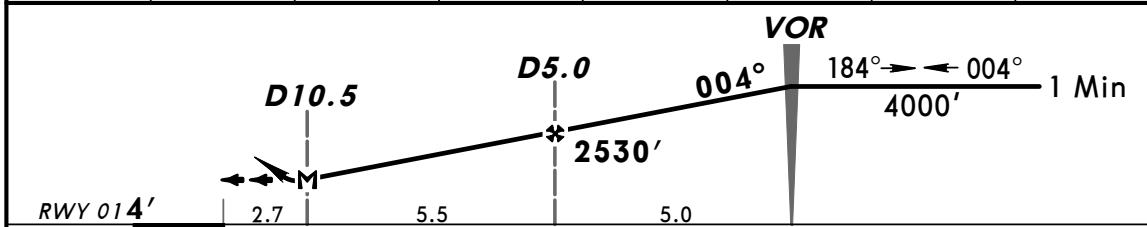
CARTAGENA, COLOMBIA
VOR Rwy 01

BRIEFING STRIP™

| | | | | | |
|--|----------------------------------|---|------------------------------|-----------------------------|--------------------|
| BARRANQUILLA Approach 119.1 | | | | NUNEZ Tower 118.3 | |
| VOR CTG 112.3 | Final Apch Crs 004° | Minimum Alt D5.0 2530' (2526') | MDA(H) 890' (886') | Apt Elev 4' | Rwy 01 4' |
| MISSED APCH: Climb on runway heading to 1500', turn RIGHT climbing to holding pattern to 4000'. | | | | | <p>MSA CTG VOR</p> |
| Alt Set: IN (hPa on req) Trans level: FL 190 Trans alt: 18000' 1. DME required. 2. Within 10 DME CTG VOR it is possible to continue a descent from the MEA to 4000'. | | | | | |



| | | | | | | | |
|----------|------|-------|-------|-------|-------|-------|-------|
| CTG DME | 10.5 | 10.0 | 9.0 | 8.0 | 7.0 | 6.0 | 5.0 |
| ALTITUDE | 893' | 1042' | 1340' | 1638' | 1935' | 2233' | 2530' |



| | | | | | | | | | | | |
|-----------------------|-----|-----|-----|-----|-----|-----|------|-------|------------|-------|--------------|
| Gnd speed-Kts | 70 | 90 | 100 | 120 | 140 | 160 | PAPI | 1500' | RWY hdg | 4000' | CTG 112.3 |
| Descent Gradient 4.9% | 347 | 447 | 496 | 595 | 695 | 794 | | ↑ | | ↻ RT | |
| MAP at D10.5 | | | | | | | | | | | |

| | | | | | | |
|--|--------|--|--|------------|--|----------------------|
| STRAIGHT-IN LANDING RWY01 MDA(H) 890' (886') | | | | Max Kts | CIRCLE-TO-LAND Not Authorized West of Airport MDA(H) _____ | |
| A | 3.0 km | | | | 100 | 890' (886') - 3.0 km |
| B | 4.0 km | | | | 135 | 890' (886') - 5.0 km |
| C | | | | | 180 | |
| D | | | | 205 | | |

PANS OPS 3

SKCG/CTG

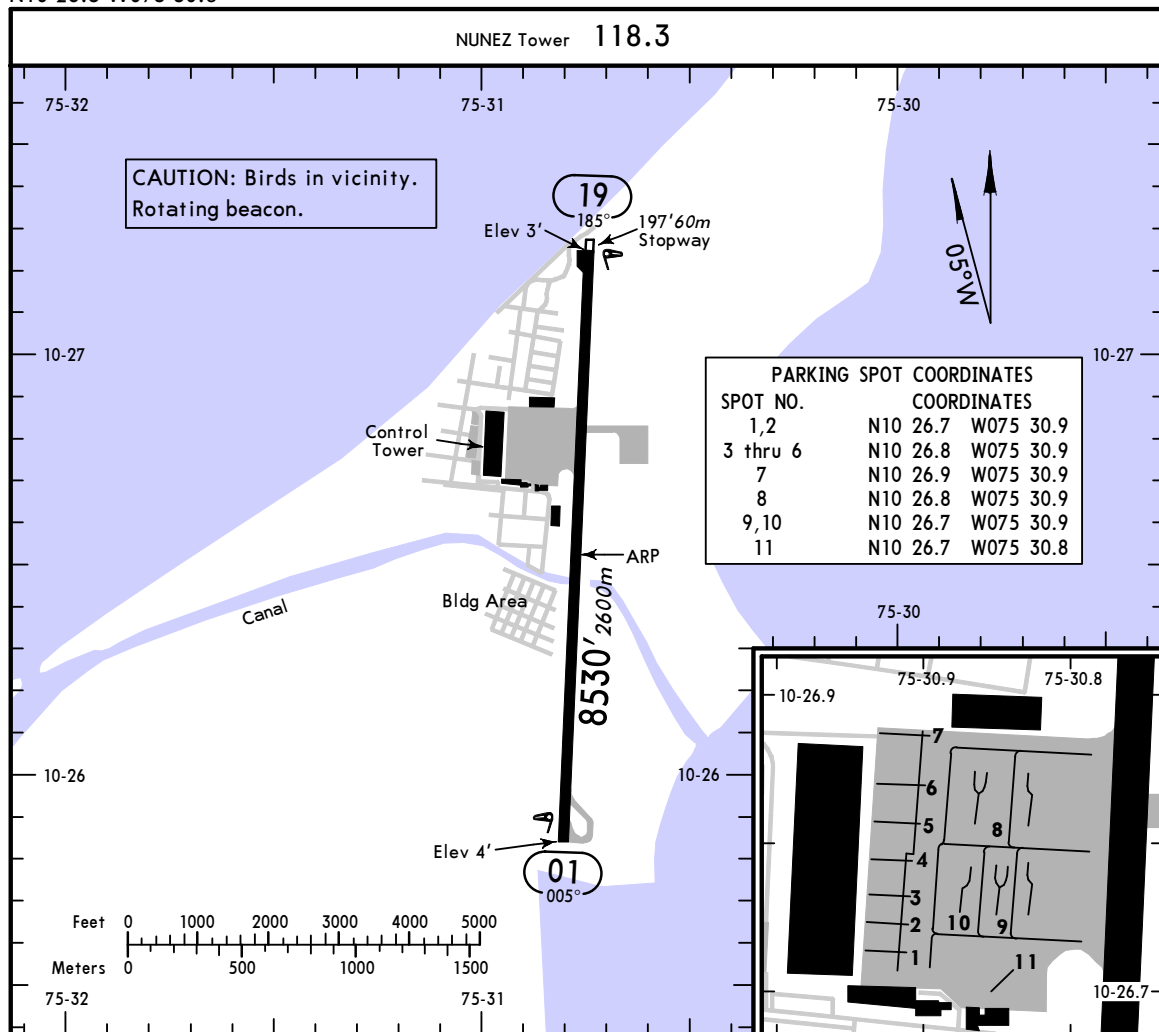
Apt Elev 4'
N10 26.5 W075 30.8

JEPPESEN

10 AUG 07 (13-1)

CARTAGENA, COLOMBIA

RAFAEL NUNEZ



ADDITIONAL RUNWAY INFORMATION

| RWY | | USABLE LENGTHS | | TAKE-OFF | WIDTH |
|-----|----------------------|--------------------------|-------------|----------|-------|
| | | LANDING BEYOND Threshold | Glide Slope | | |
| 01 | RL PAPI (angle 2.5°) | | | | 148' |
| 19 | RL PAPI (angle 2.7°) | | | | 45m |
| | | | | | |
| | | | | | |
| | | | | | |

| TAKE-OFF | |
|-----------|---------------------------------------|
| All Rwys | |
| 1 | Take-off Alternate Airport Filed |
| | RL & CL or RCLM |
| | STD |
| 1 Eng | 880' - 3000m |
| 2 Eng | 1 hour alternate (1 Eng inop) 500m |
| | 1600m |
| 3 & 4 Eng | 2 hour alternate (1 Eng inop) 500m |
| | 800m |

1 With appropriate approval.

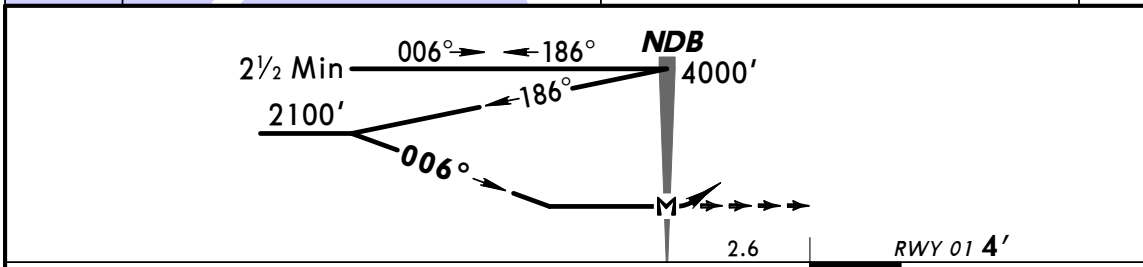
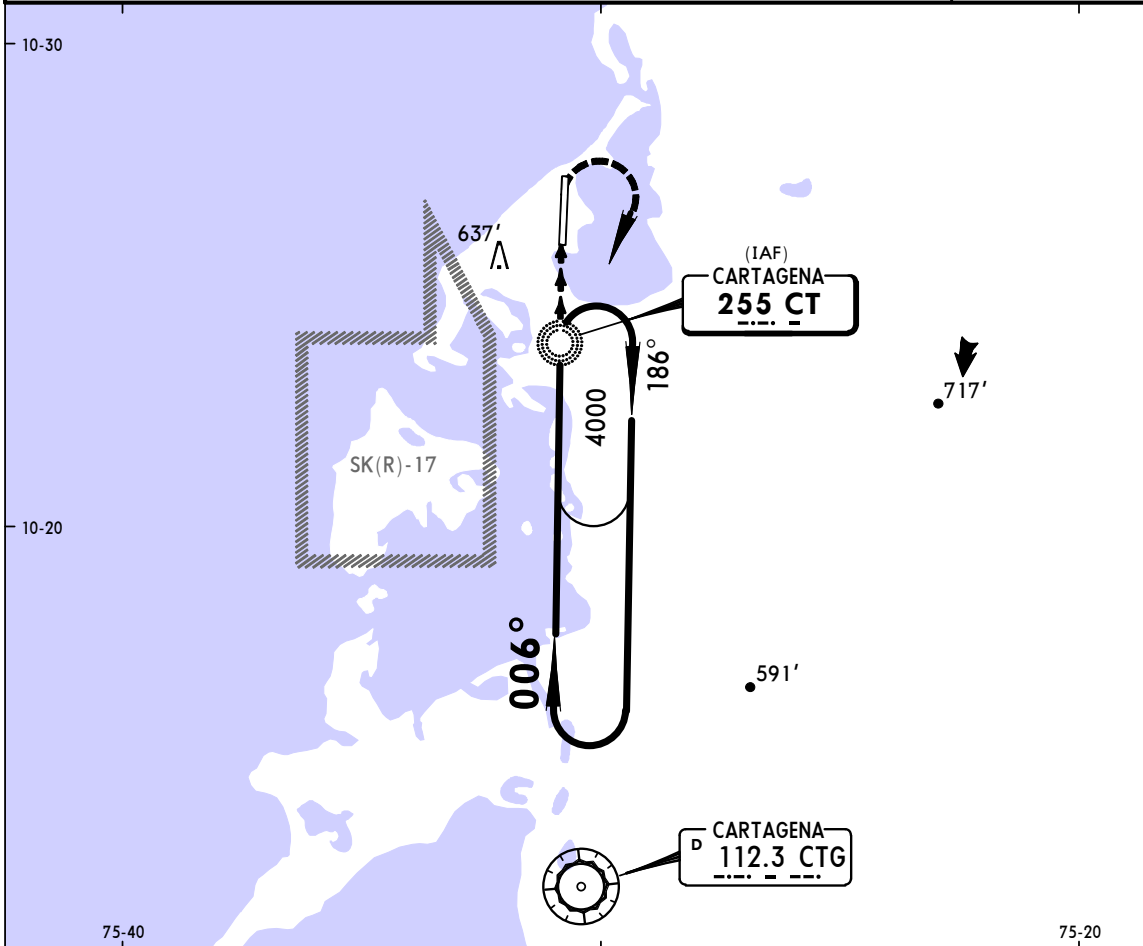
SKCG/CTG
RAFAEL NUNEZ

JEPPESEN
7 OCT 05 (16-1)

CARTAGENA, COLOMBIA
NDB Rwy 01

BRIEFING STRIP™

| | | | | | | |
|--|--------------------------------------|--------|-------------------------------------|---------------------------|-------------------------|-------------------|
| BARRANQUILLA Approach 119.1 | | | NUNEZ Tower 118.3 | | | |
| NDB CT 255 | Final Apch Crs 006° | No FAF | MDA(H) 890' (886') | Apt Elev 4' | Rwy 01 4' | |
| MISSED APCH: Climb on runway heading to 1500', turn RIGHT climbing to the holding pattern to 4000'. | | | | | | |
| Alt Set: IN (hPa on req) | | | Trans level: FL 190 | | | Trans alt: 18000' |
| 1. Within 10 DME CTG VOR it is possible to continue a descent from the MEA to 4000'. | | | | | | |



| | | | | | | | |
|---------------------------|--------|--|--|--------------------------------|----------------------|----------|--------|
| MAP at NDB | | | | PAPI | 1500' on RWY hdg | 4000' RT | CT 255 |
| STRAIGHT-IN LANDING RWY01 | | | | CIRCLE-TO-LAND | | | |
| MDA(H) 890' (886') | | | | Not Authorized West of Airport | | | |
| A | 2.0 km | | | Max Kts | MDA(H) | | |
| B | | | | 100 | 890' (886') - 3.0 km | | |
| C | 4.0 km | | | 135 | | | |
| D | | | | 180 | 890' (886') - 5.0 km | | |
| | | | | 205 | | | |

PANS OPS 3