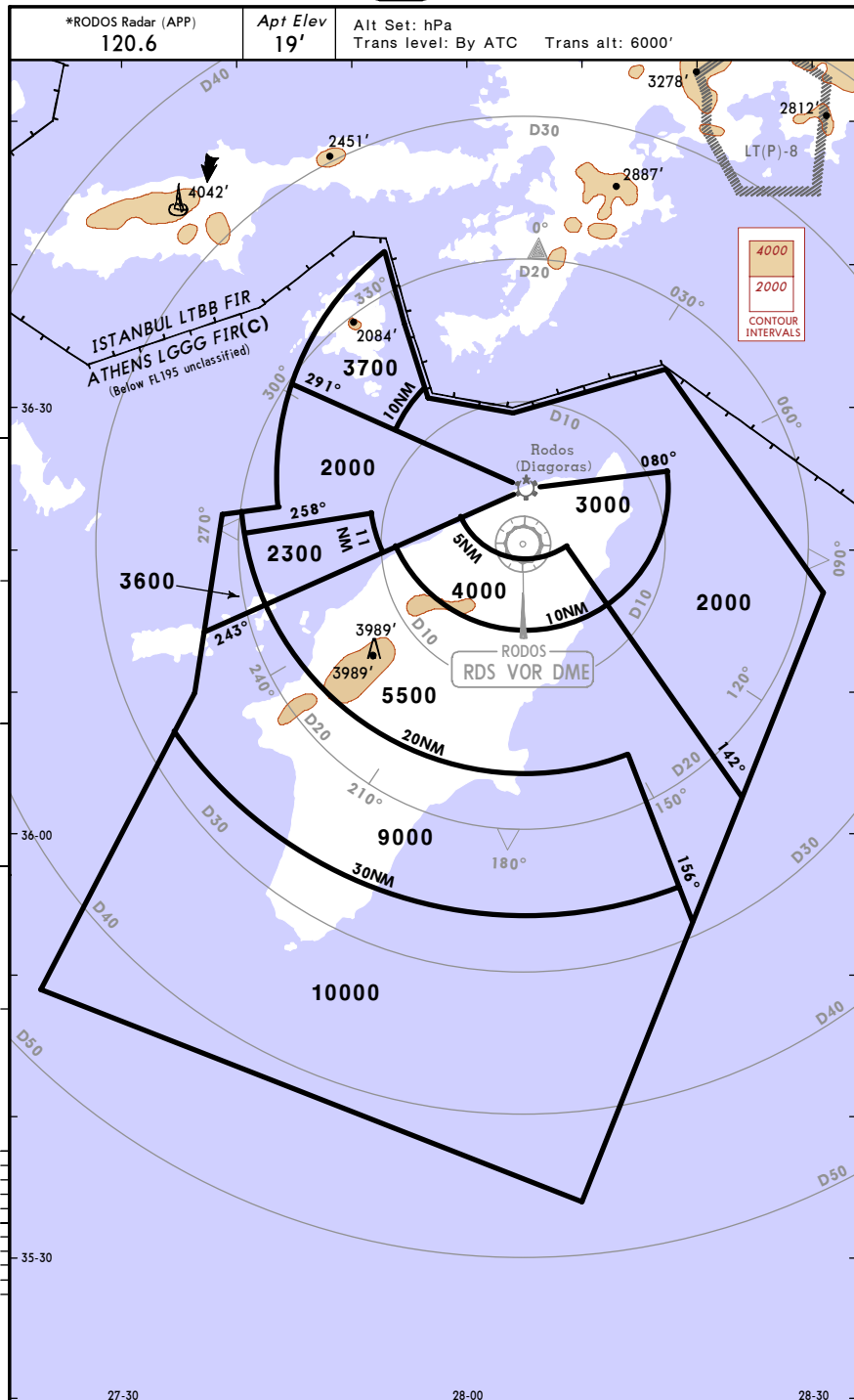


LGRP/RHO  
 DIAGORAS

JEPPESEN  
 28 SEP 07 (10-1R)

RODOS, GREECE

RADAR MINIMUM ALTITUDES

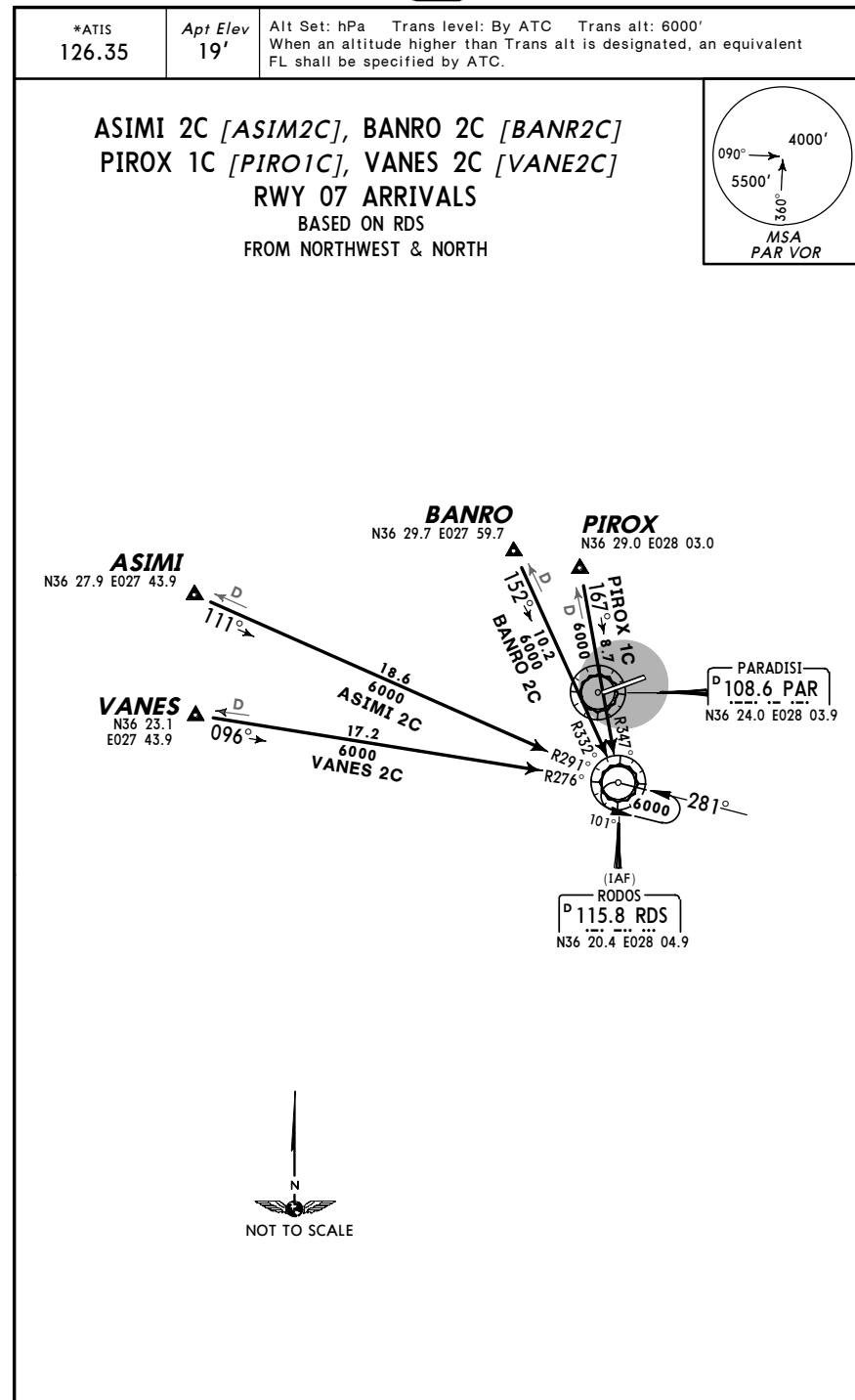


LGRP/RHO  
 DIAGORAS

JEPPESEN  
 4 MAY 07 (10-2) Eff 10 May

RODOS, GREECE

STAR



LGRP/RHO  
 DIAGORAS

JEPPESEN  
 4 MAY 07 (10-2A) Eff 10 May

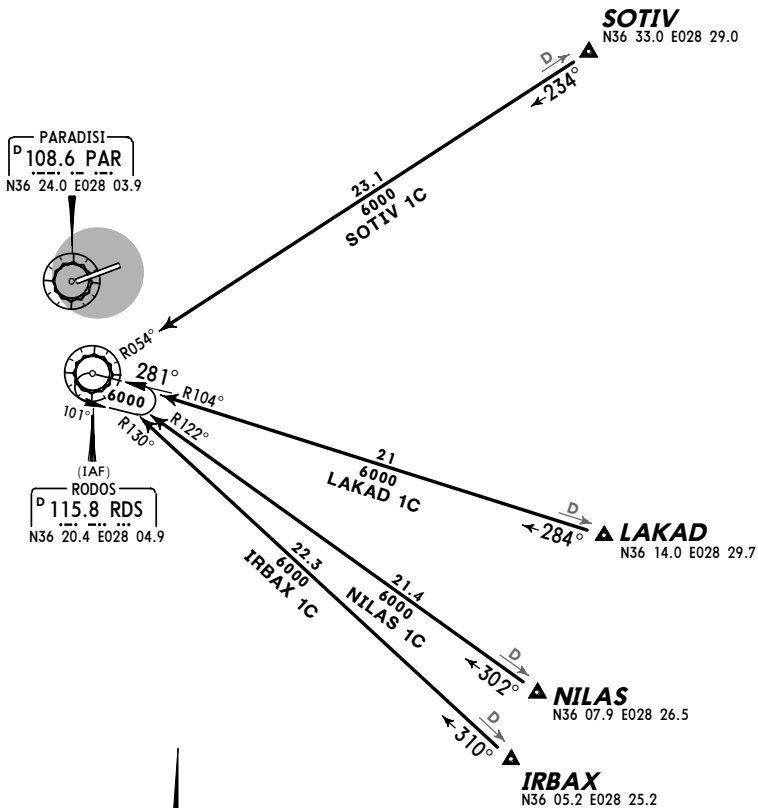
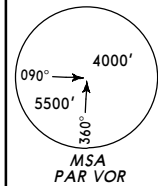
RODOS, GREECE  
 STAR

\*ATIS  
 126.35

Apt Elev  
 19'

Alt Set: hPa Trans level: By ATC Trans alt: 6000'  
 When an altitude higher than Trans alt is designated, an equivalent  
 FL shall be specified by ATC.

IRBAX 1C [IRBA1C], LAKAD 1C [LAKA1C]  
 NILAS 1C [NILA1C], SOTIV 1C [SOTI1C]  
 RWY 07 ARRIVALS  
 BASED ON RDS  
 FROM EAST



NOT TO SCALE

LGRP/RHO  
 DIAGORAS

JEPPESEN  
 4 MAY 07 (10-2B) Eff 10 May

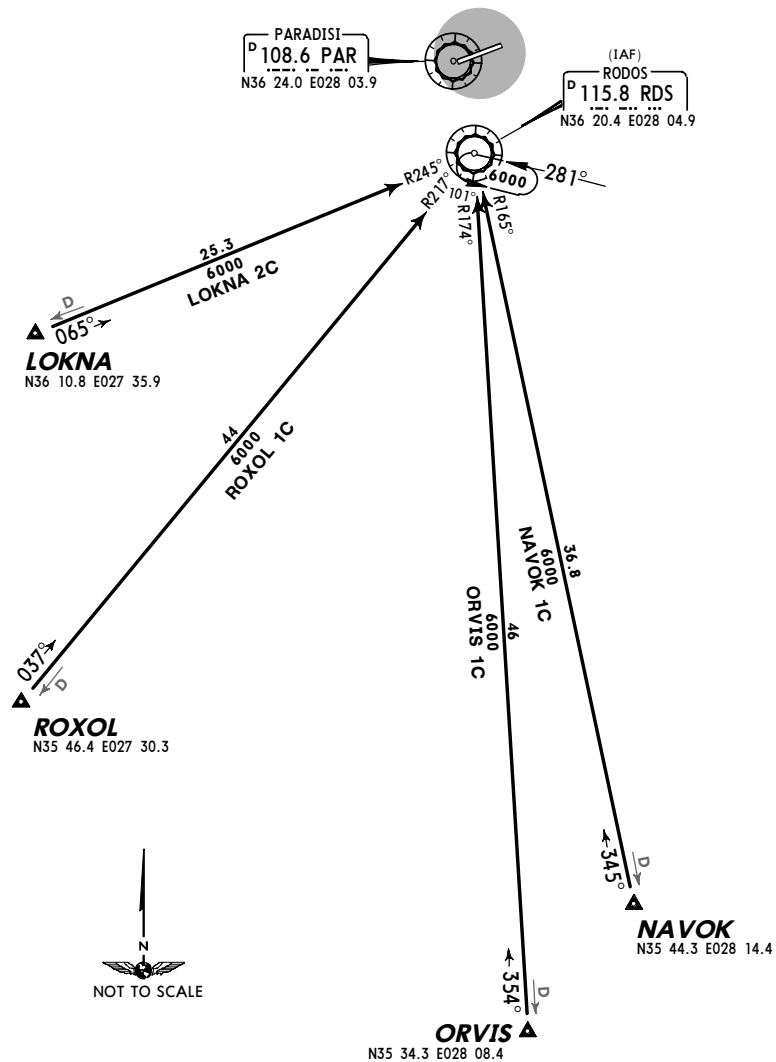
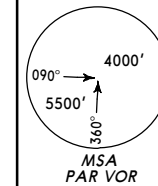
RODOS, GREECE  
 STAR

\*ATIS  
 126.35

Apt Elev  
 19'

Alt Set: hPa Trans level: By ATC Trans alt: 6000'  
 When an altitude higher than Trans alt is designated, an equivalent  
 FL shall be specified by ATC.

LOKNA 2C [LOKN2C], NAVOK 1C [NAVO1C]  
 ORVIS 1C [ORVI1C], ROXOL 1C [ROXO1C]  
 RWY 07 ARRIVALS  
 BASED ON RDS  
 FROM SOUTH & SOUTHWEST



NOT TO SCALE

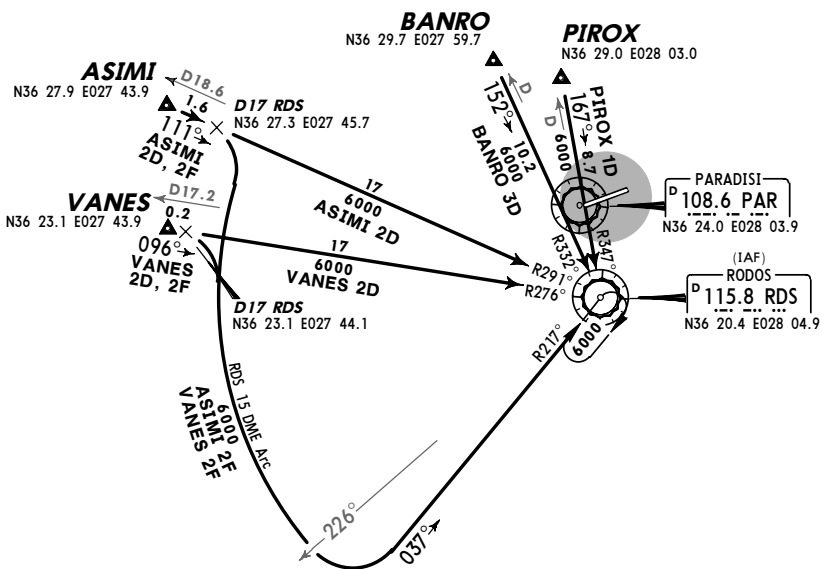
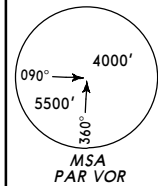
LGRP/RHO  
 DIAGORAS

JEPPESEN  
 4 MAY 07 (10-2C) Eff 10 May

RODOS, GREECE  
 STAR

*ATIS 126.35	Apt Elev 19'	Alt Set: hPa Trans level: By ATC Trans alt: 6000' When an altitude higher than Trans alt is designated, an equivalent FL shall be specified by ATC.
-----------------	-----------------	--

ASIMI 2D [ASIM2D], ASIMI 2F [ASIM2F]  
 BANRO 3D [BANR3D], PIROX 1D [PIRO1D]  
 VANES 2D [VANE2D], VANES 2F [VANE2F]  
 RWY 25 ARRIVALS  
 BASED ON RDS  
 FROM NORTHWEST & NORTH



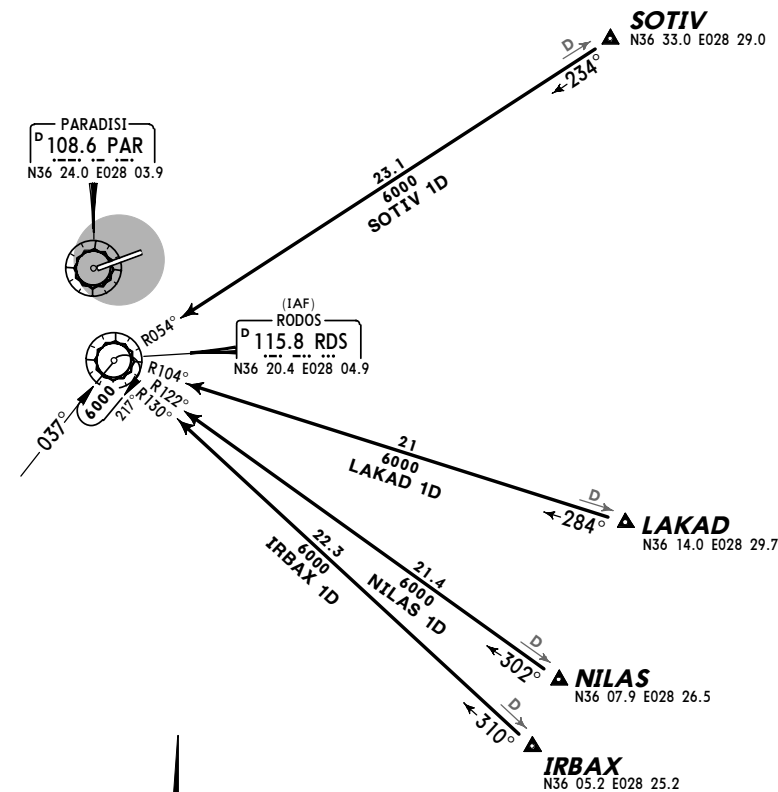
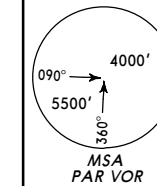
LGRP/RHO  
 DIAGORAS

JEPPESEN  
 4 MAY 07 (10-2D) Eff 10 May

RODOS, GREECE  
 STAR

*ATIS 126.35	Apt Elev 19'	Alt Set: hPa Trans level: By ATC Trans alt: 6000' When an altitude higher than Trans alt is designated, an equivalent FL shall be specified by ATC.
-----------------	-----------------	--

IRBAX 1D [IRBA1D], LAKAD 1D [LAKA1D]  
 NILAS 1D [NILA1D], SOTIV 1D [SOTI1D]  
 RWY 25 ARRIVALS  
 BASED ON RDS  
 FROM EAST



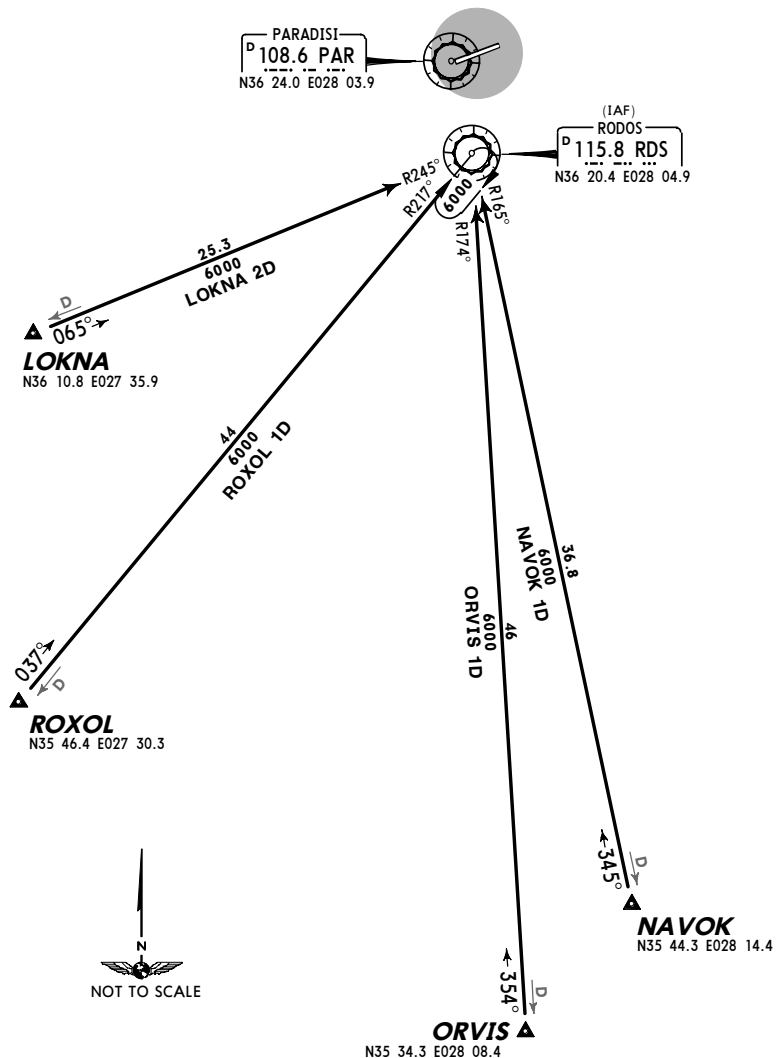
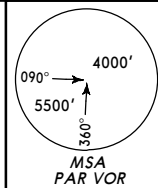
LGRP/RHO  
 DIAGORAS

JEPPesen  
 4 MAY 07 (10-2E) Eff 10 May

RODOS, GREECE  
 STAR

\*ATIS 126.35  
 Apt Elev 19'  
 Alt Set: hPa Trans level: By ATC Trans alt: 6000'  
 When an altitude higher than Trans alt is designated, an equivalent FL shall be specified by ATC.

LOKNA 2D [LOKN2D], NAVOK 1D [NAVO1D]  
 ORVIS 1D [ORVI1D], ROXOL 1D [ROXO1D]  
 RWY 25 ARRIVALS  
 BASED ON RDS  
 FROM SOUTH & SOUTHWEST



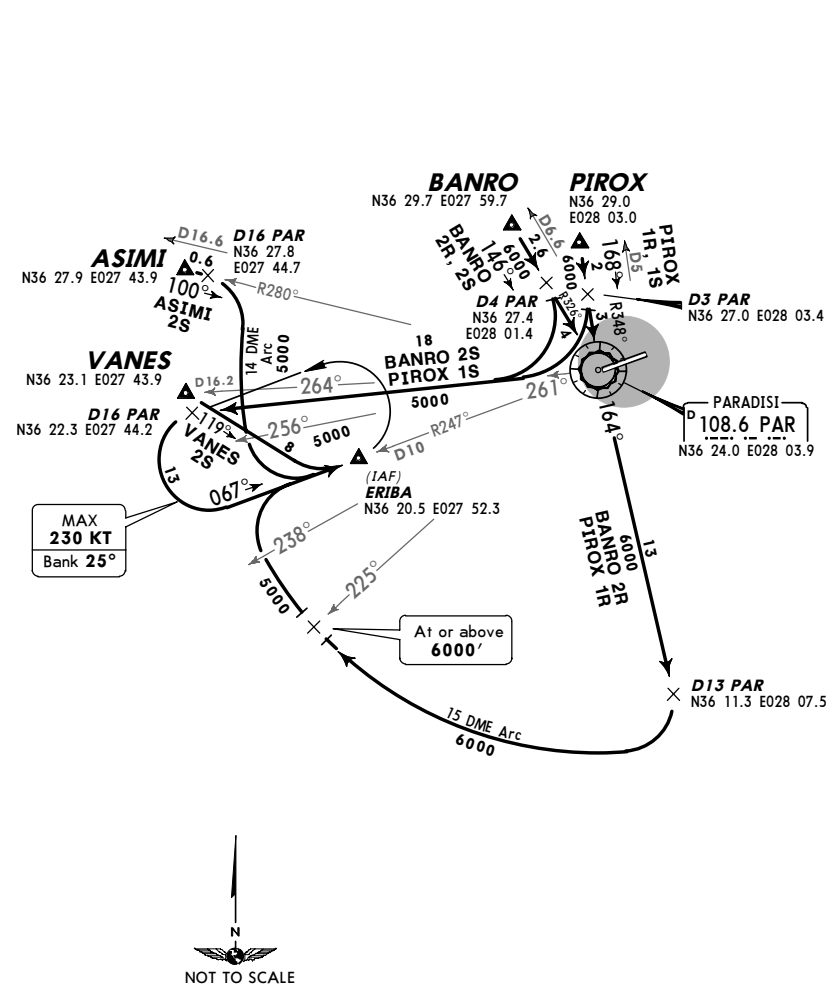
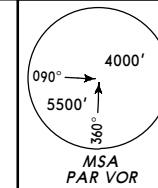
LGRP/RHO  
 DIAGORAS

JEPPesen  
 4 MAY 07 (10-2F) Eff 10 May

RODOS, GREECE  
 STAR

\*ATIS 126.35  
 Apt Elev 19'  
 Alt Set: hPa Trans level: By ATC Trans alt: 6000'  
 When an altitude higher than Trans alt is designated, an equivalent FL shall be specified by ATC.

ASIMI 2S [ASIM2S], BANRO 2R [BANR2R]  
 BANRO 2S [BANR2S], PIROX 1R [PIRO1R]  
 PIROX 1S [PIRO1S], VANES 2S [VANE2S]  
 RWY 07 ARRIVALS  
 BASED ON PAR (WITH HOLDING)  
 FROM NORTHWEST & NORTH



LGRP/RHO  
 DIAGORAS



RODOS, GREECE

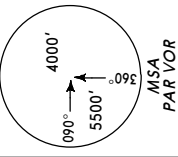
4 MAY 07 (10-2G) Eff 10 May

STAR

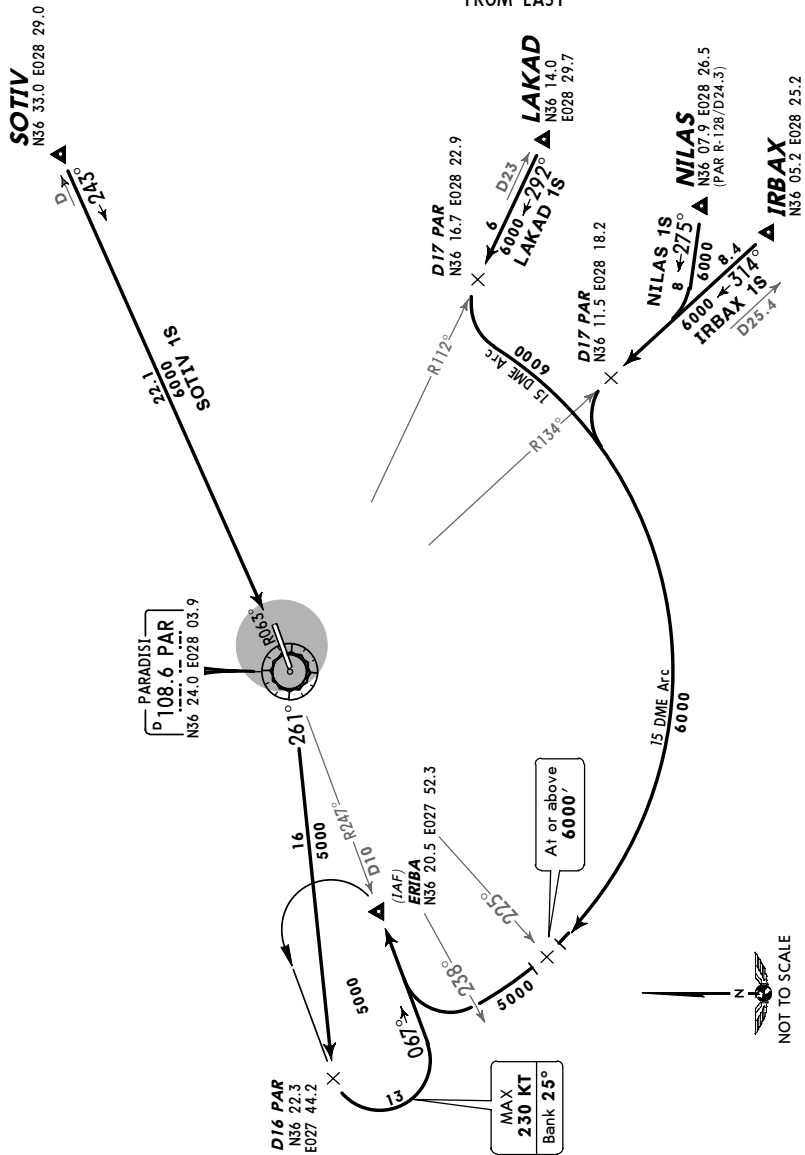
\*ATIS  
 126.35

Apt Elev  
 19'

Alt Set: hPa Trans level: By ATC Trans alt: 6000'  
 When an altitude higher than Trans alt is designated, an equivalent  
 FL shall be specified by ATC.



IRBAX 1S [IRBA1S], LAKAD 1S [LAKA1S]  
 NILAS 1S [NILA1S], SOTIV 1S [SOTI1S]  
 RWY 07 ARRIVALS  
 BASED ON PAR (WITH HOLDING)  
 FROM EAST



LGRP/RHO  
 DIAGORAS



RODOS, GREECE

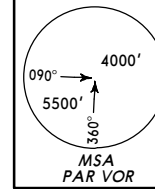
4 MAY 07 (10-2H) Eff 10 May

STAR

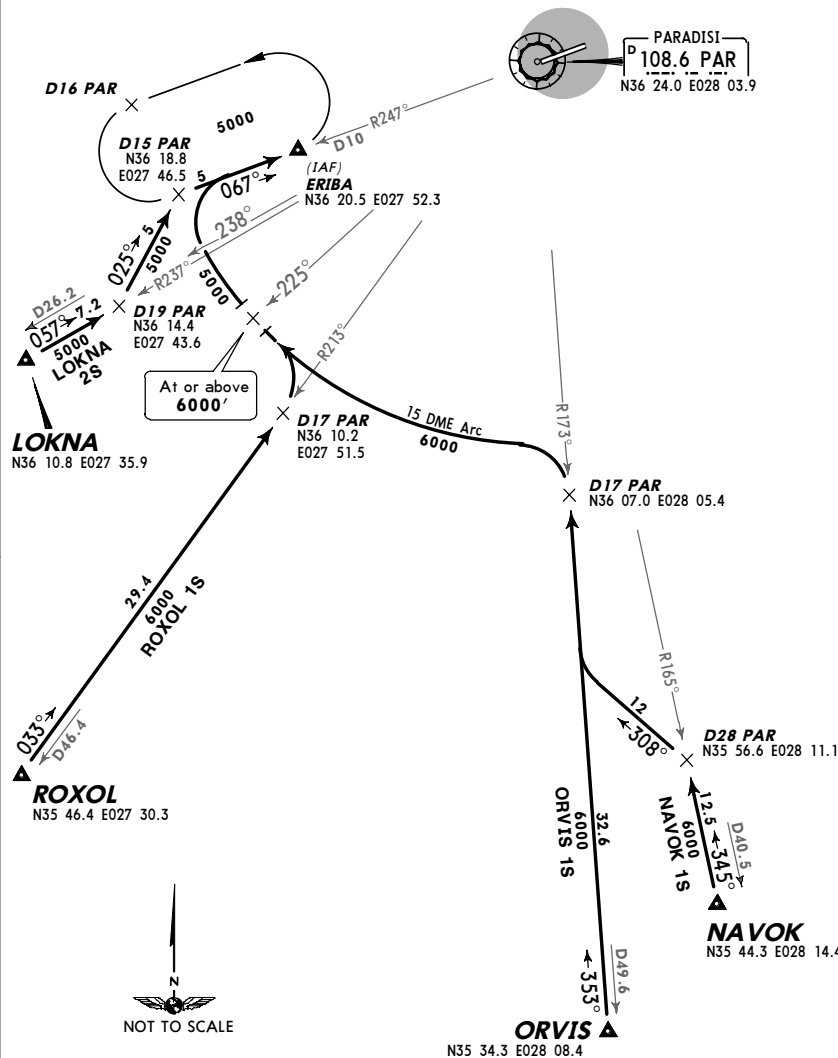
\*ATIS  
 126.35

Apt Elev  
 19'

Alt Set: hPa Trans level: By ATC Trans alt: 6000'  
 When an altitude higher than Trans alt is designated, an equivalent  
 FL shall be specified by ATC.



LOKNA 2S [LOKN2S], NAVOK 1S [NAVO1S]  
 ORVIS 1S [ORVI1S], ROXOL 1S [ROXO1S]  
 RWY 07 ARRIVALS  
 BASED ON PAR (WITH HOLDING)  
 FROM SOUTH & SOUTHWEST



LGRP/RHO  
 DIAGORAS

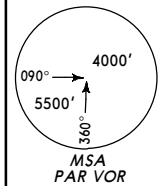
JEPPESEN  
 4 MAY 07 (10-2J) Eff 10 May

RODOS, GREECE  
 STAR

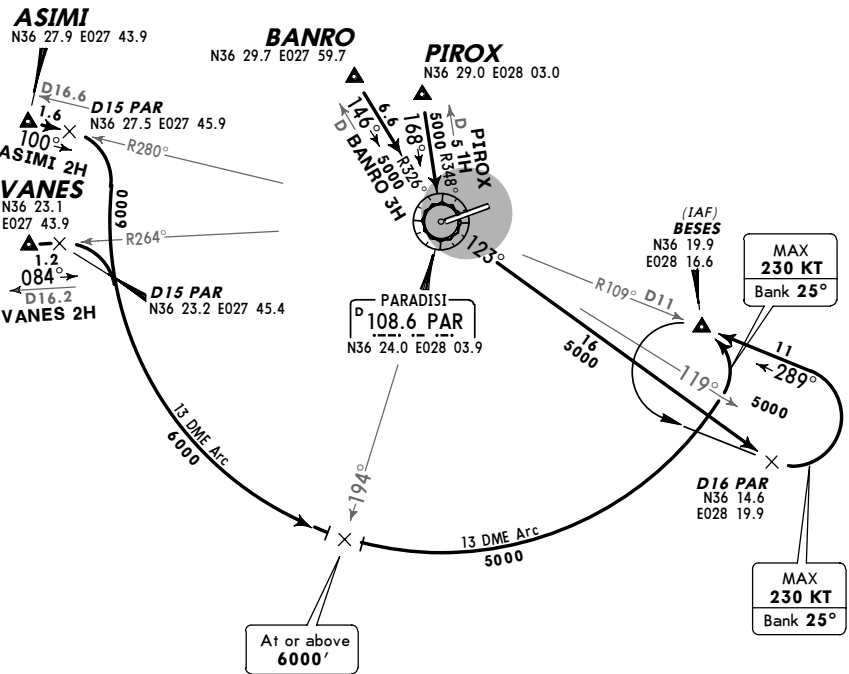
\*ATIS  
 126.35

Apt Elev  
 19'

Alt Set: hPa Trans level: By ATC Trans alt: 6000'  
 When an altitude higher than Trans alt is designated, an equivalent  
 FL shall be specified by ATC.



ASIMI 2H [ASIM2H], BANRO 3H [BANR3H]  
 PIROX 1H [PIRO1H], VANES 2H [VANE2H]  
 RWY 25 ARRIVALS  
 BASED ON PAR (WITH HOLDING)  
 FROM NORTHWEST & NORTH



LGRP/RHO  
 DIAGORAS

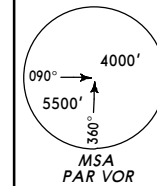
JEPPESEN  
 4 MAY 07 (10-2K) Eff 10 May

RODOS, GREECE  
 STAR

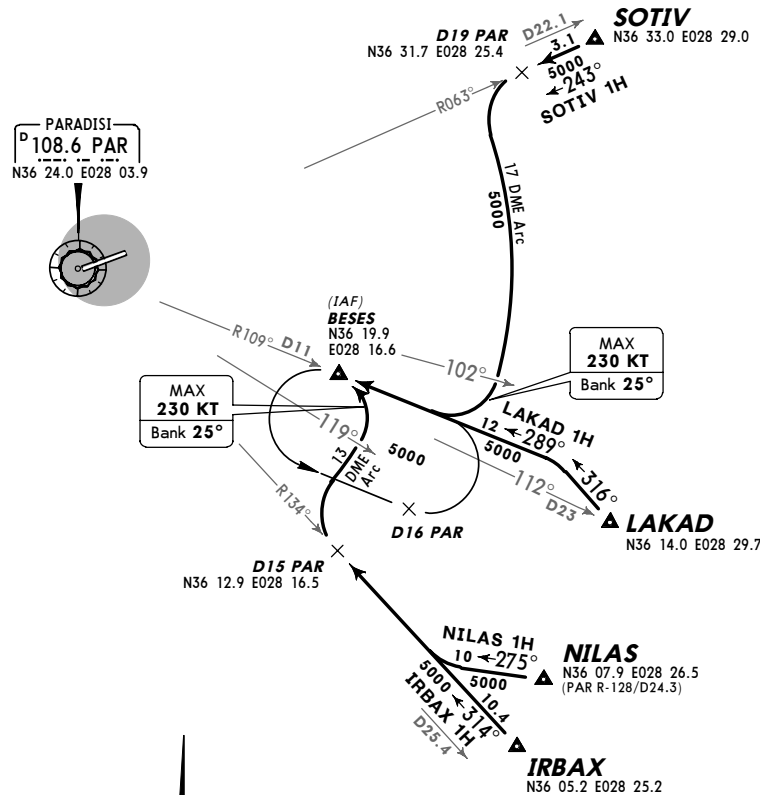
\*ATIS  
 126.35

Apt Elev  
 19'

Alt Set: hPa Trans level: By ATC Trans alt: 6000'  
 When an altitude higher than Trans alt is designated, an equivalent  
 FL shall be specified by ATC.



IRBAX 1H [IRBA1H], LAKAD 1H [LAKA1H]  
 NILAS 1H [NILA1H], SOTIV 1H [SOTI1H]  
 RWY 25 ARRIVALS  
 BASED ON PAR (WITH HOLDING)  
 FROM EAST



LGRP/RHO  
 DIAGORAS



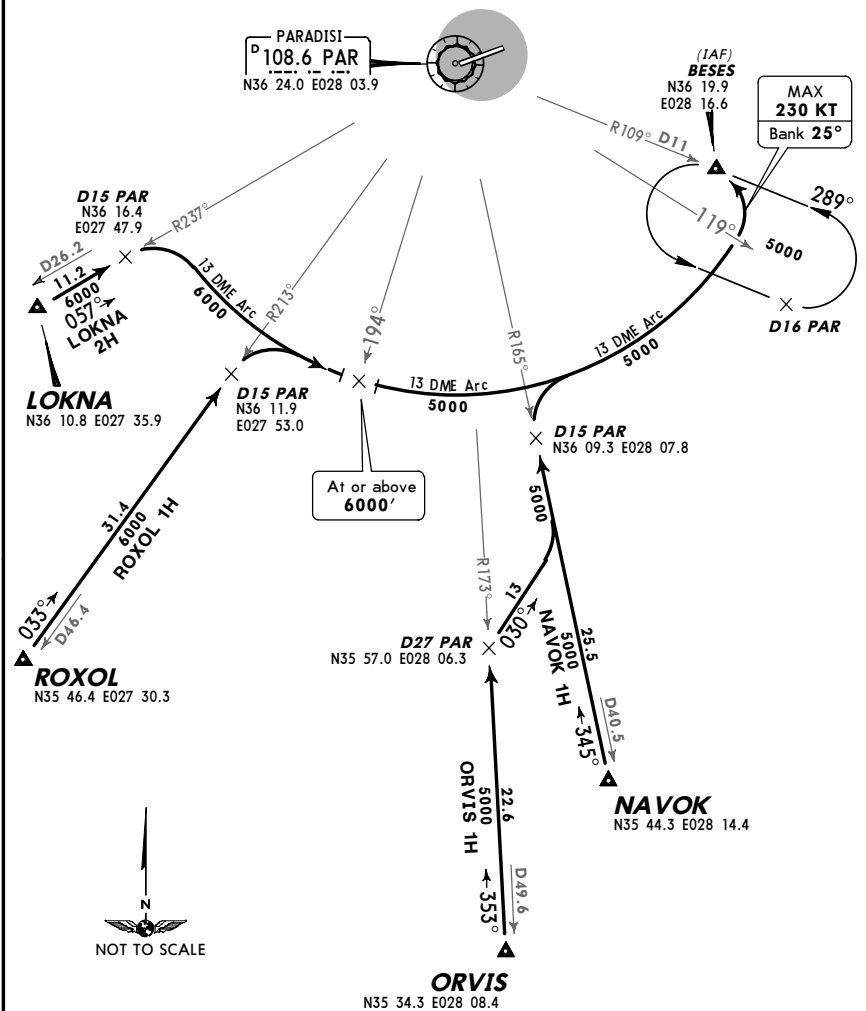
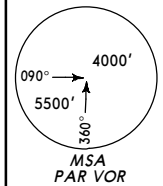
4 MAY 07 (10-2L) Eff 10 May

RODOS, GREECE

STAR

*ATIS 126.35	Apt Elev 19'	Alt Set: hPa Trans level: By ATC Trans alt: 6000' When an altitude higher than Trans alt is designated, an equivalent FL shall be specified by ATC.
-----------------	-----------------	--

LOKNA 2H [LOKN2H], NAVOK 1H [NAVO1H]  
 ORVIS 1H [ORV11H], ROXOL 1H [ROXO1H]  
 RWY 25 ARRIVALS  
 BASED ON PAR (WITH HOLDING)  
 FROM SOUTH & SOUTHWEST



LGRP/RHO  
 DIAGORAS



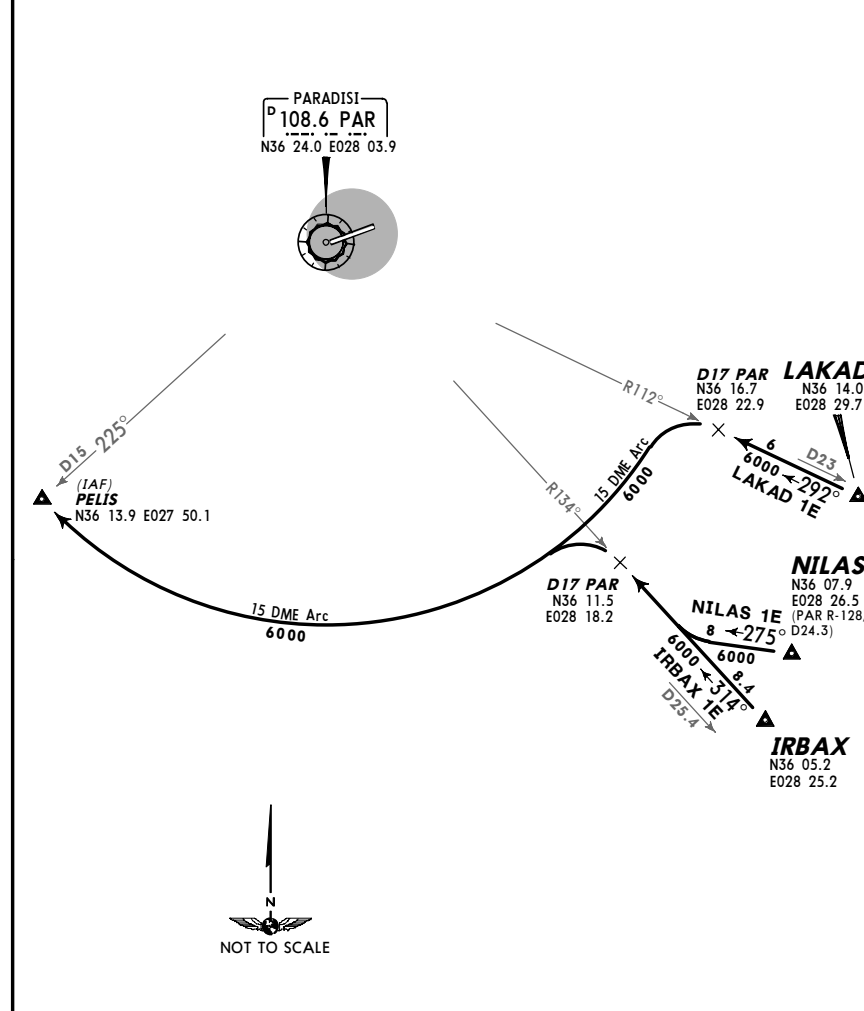
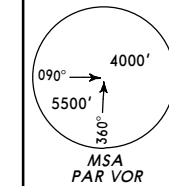
4 MAY 07 (10-2M) Eff 10 May

RODOS, GREECE

STAR

*ATIS 126.35	Apt Elev 19'	Alt Set: hPa Trans level: By ATC Trans alt: 6000' When an altitude higher than Trans alt is designated, an equivalent FL shall be specified by ATC.
-----------------	-----------------	--

IRBAX 1E [IRBA1E], LAKAD 1E [LAKA1E]  
 NILAS 1E [NILA1E]  
 RWY 07 ARRIVALS  
 BASED ON PAR (WITHOUT HOLDING)  
 FROM EAST



LGRP/RHO  
 DIAGORAS



4 MAY 07 (10-2N) Eff 10 May

RODOS, GREECE

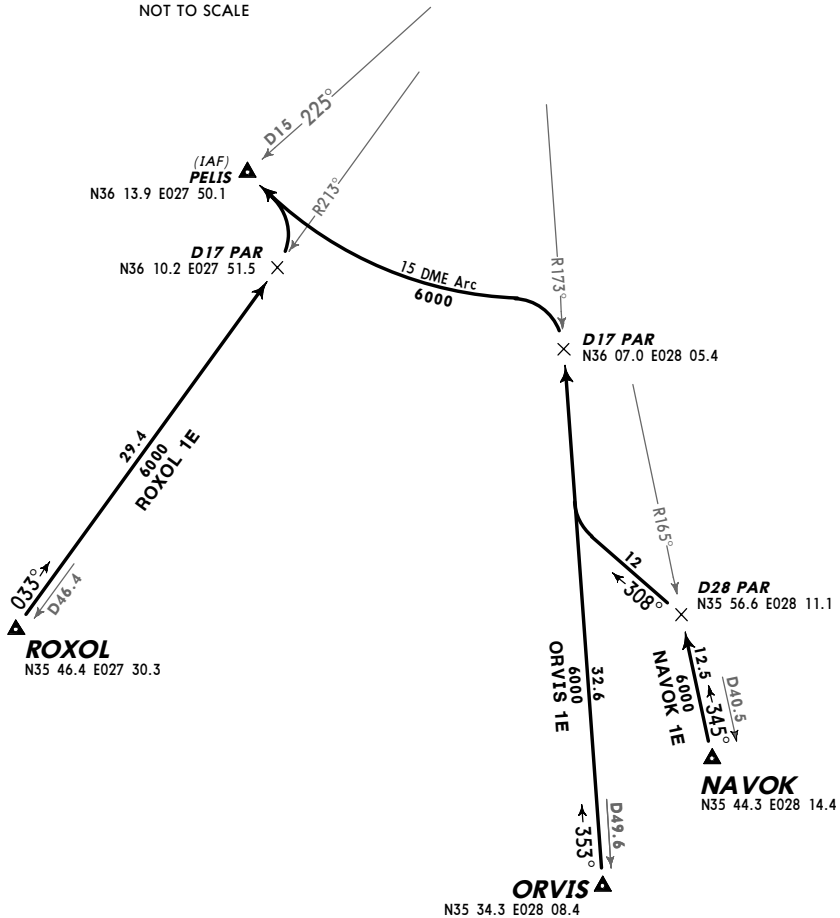
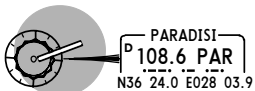
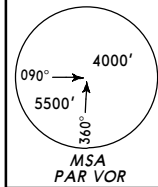
STAR

\*ATIS  
 126.35

Apt Elev  
 19'

Alt Set: hPa Trans level: By ATC Trans alt: 6000'  
 When an altitude higher than Trans alt is designated, an equivalent  
 FL shall be specified by ATC.

NAVOK 1E [NAVO1E], ORVIS 1E [ORVI1E]  
 ROXOL 1E [ROXO1E]  
 RWY 07 ARRIVALS  
 BASED ON PAR (WITHOUT HOLDING)  
 FROM SOUTH & SOUTHWEST



LGRP/RHO  
 DIAGORAS



4 MAY 07 (10-2P) Eff 10 May

RODOS, GREECE

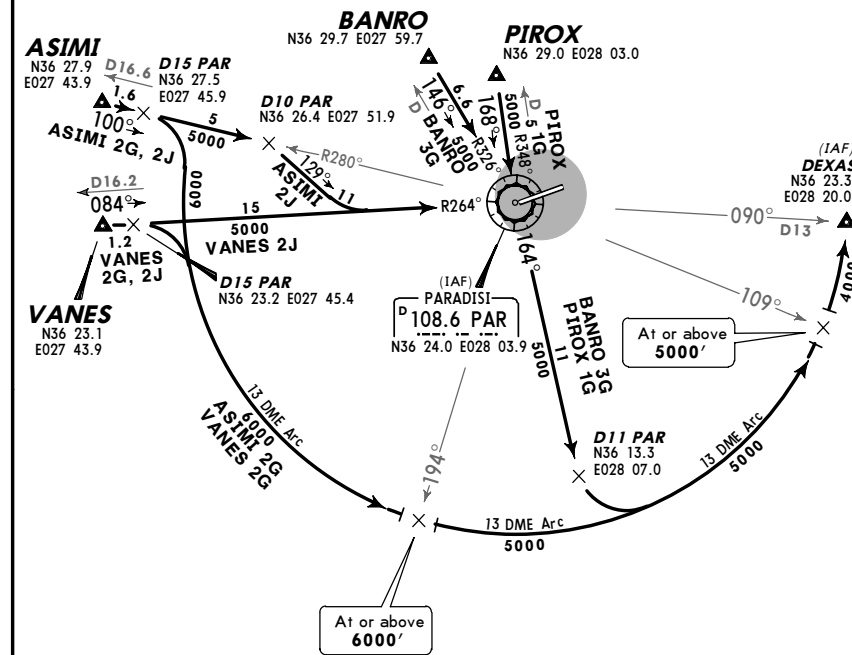
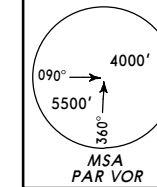
STAR

\*ATIS  
 126.35

Apt Elev  
 19'

Alt Set: hPa Trans level: By ATC Trans alt: 6000'  
 When an altitude higher than Trans alt is designated, an equivalent  
 FL shall be specified by ATC.

ASIMI 2G [ASIM2G], ASIMI 2J [ASIM2J]  
 BANRO 3G [BANR3G], PIROX 1G [PIRO1G]  
 VANES 2G [VANE2G], VANES 2J [VANE2J]  
 RWY 25 ARRIVALS  
 BASED ON PAR (WITHOUT HOLDING)  
 FROM NORTHWEST & NORTH





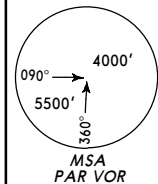
LGRP/RHO  
 DIAGORAS

JEPPESEN  
 4 MAY 07 (10-2Q) Eff 10 May

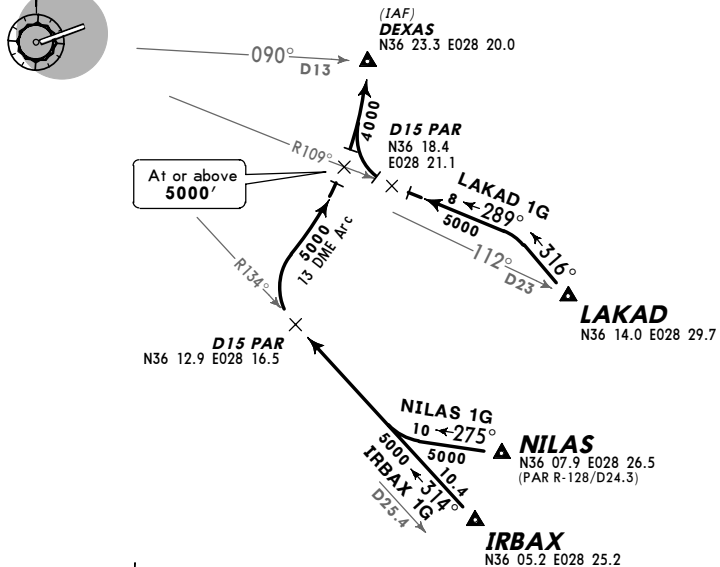
RODOS, GREECE  
 STAR

\*ATIS 126.35 Apt Elev 19' Alt Set: hPa Trans level: By ATC Trans alt: 6000'  
 When an altitude higher than Trans alt is designated, an equivalent FL shall be specified by ATC.

IRBAX 1G [IRBA1G], LAKAD 1G [LAKA1G]  
 NILAS 1G [NILA1G]  
 RWY 25 ARRIVALS  
 BASED ON PAR (WITHOUT HOLDING)  
 FROM EAST



PARADISI  
 108.6 PAR  
 N36 24.0 E028 03.9



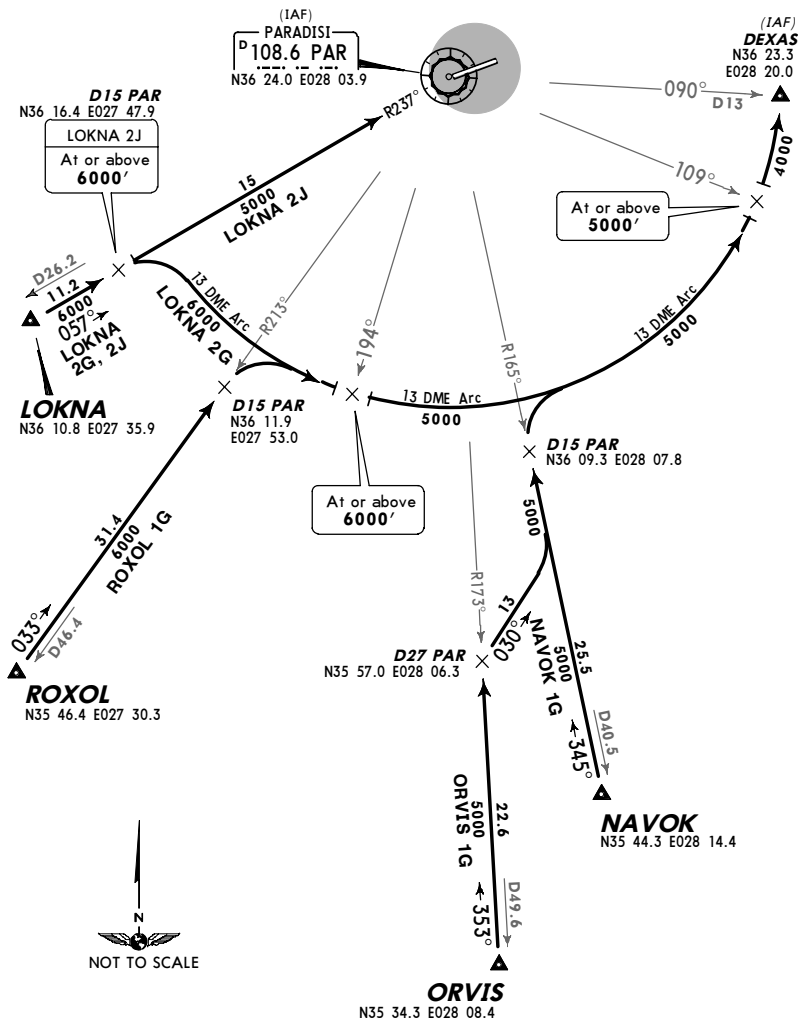
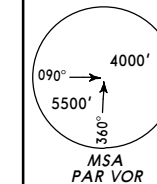
LGRP/RHO  
 DIAGORAS

JEPPESEN  
 4 MAY 07 (10-2S) Eff 10 May

RODOS, GREECE  
 STAR

\*ATIS 126.35 Apt Elev 19' Alt Set: hPa Trans level: By ATC Trans alt: 6000'  
 When an altitude higher than Trans alt is designated, an equivalent FL shall be specified by ATC.

LOKNA 2G [LOKN2G], LOKNA 2J [LOKN2J]  
 NAVOK 1G [NAVO1G], ORVIS 1G [ORVI1G]  
 ROXOL 1G [ROXO1G]  
 RWY 25 ARRIVALS  
 BASED ON PAR (WITHOUT HOLDING)  
 FROM SOUTH & SOUTHWEST



LGRP/RHO  
 DIAGORAS

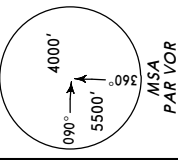
JEPPESEN

4 MAY 07 (10-3) Eff 10 May

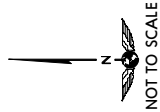
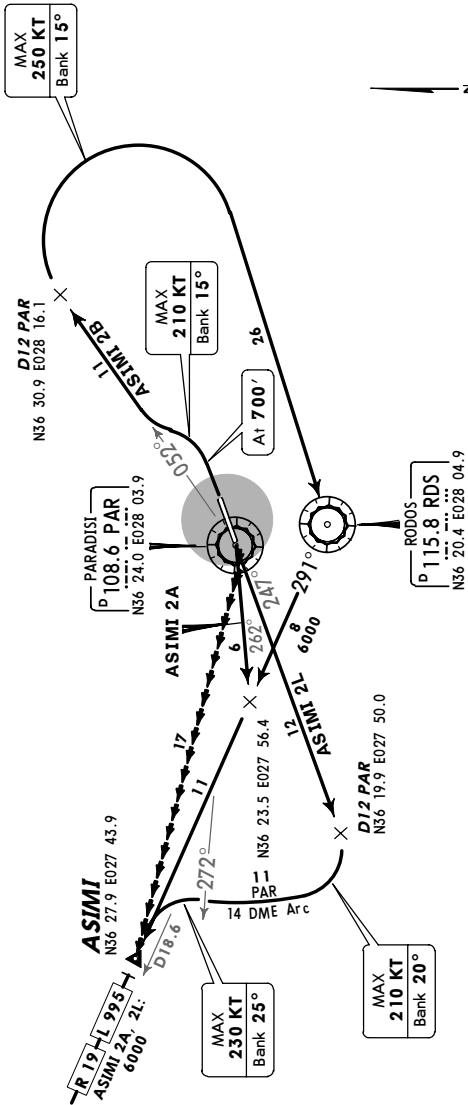
RODOS, GREECE

SID

Apt Elev 19'  
 Trans level: By ATC Trans alt: 6000'  
 1. When an altitude higher than Trans alt is designated, an equivalent FL shall be specified by ATC. 2. VMC: Visibility 10 km and ceiling at or above 6500'.



ASIMI 2A [ASIM2A], ASIMI 2B [ASIM2B]  
 ASIMI 2L [ASIM2L]  
 RWYS 25, 07 DEPARTURES  
 BASED ON PAR & RDS



Gnd speed-KT	75	100	150	200	250	300
352' per NM	441	587	881	1175	1468	1762
292' per NM	365	486	729	972	1215	1458
273' per NM	342	456	684	911	1139	1367

These SIDs require minimum climb gradients of  
 ASIMI 2A: 352' per NM (5.8%) up to 6000'.  
 ASIMI 2B: 292' per NM (4.8%) up to 700'.  
 ASIMI 2L: 273' per NM (4.5%) up to MEA.

RWY 25: Visual climb is required up to 300'.

SID	RWY	ROUTING
ASIMI 2A	25	Climb on PAR R-262, intercept RDS R-291 to ASIMI, join airways R 19/L 995. <b>Visual Departure (daytime only):</b> Pilot may be requested to accept a visual departure. When accepting, expect to turn RIGHT as soon as practicable, maintain VMC and own terrain separation until ASIMI, join airways R 19/L 995. Climb straight ahead to 700', turn LEFT, intercept PAR R-052 to D12 PAR, turn RIGHT to RDS, turn RIGHT, RDS R-291 to ASIMI, join airways R 19/L 995. Climb on PAR R-247 to D12 PAR, turn RIGHT, along PAR 14 DME arc, when passing PAR R-272 turn LEFT, intercept RDS R-291 to ASIMI, join airways R 19/L 995.
ASIMI 2B	07	
ASIMI 2L	25	

LGRP/RHO  
 DIAGORAS

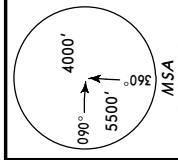
JEPPESEN

4 MAY 07 (10-3A) Eff 10 May

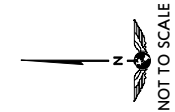
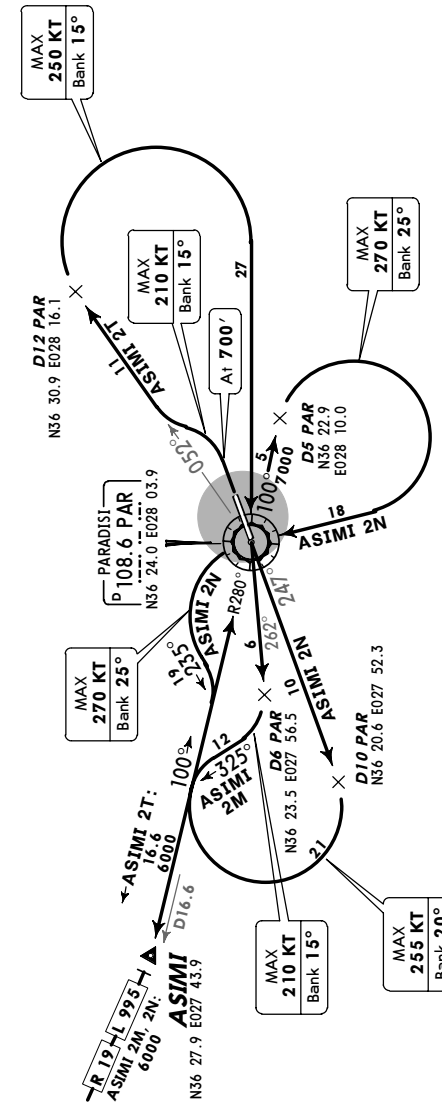
RODOS, GREECE

SID

Apt Elev 19'  
 Trans level: By ATC Trans alt: 6000'  
 When an altitude higher than Trans alt is designated, an equivalent FL shall be specified by ATC.



ASIMI 2M [ASIM2M], ASIMI 2N [ASIM2N]  
 ASIMI 2T [ASIM2T]  
 RWYS 25, 07 DEPARTURES  
 BASED ON PAR



Gnd speed-KT	75	100	150	200	250	300
334' per NM	418	557	835	1114	1392	1671
292' per NM	365	486	729	972	1215	1458
237' per NM	296	395	592	790	987	1185

These SIDs require minimum climb gradients of  
 ASIMI 2M: 334' per NM (5.5%) up to 6000'.  
 ASIMI 2N: 292' per NM (3.9%) up to 7000'.  
 ASIMI 2T: 237' per NM (4.8%) up to 700'.

RWY 25: Visual climb is required up to 300'.

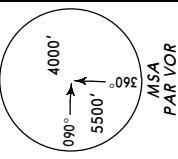
SID	RWY	ROUTING
ASIMI 2M	25	Climb on PAR R-262 to D6 PAR, turn RIGHT, 325° track, intercept PAR R-280 to ASIMI, join airways R 19/L 995.
ASIMI 2N		Climb on PAR R-247 to D10 PAR, turn RIGHT, intercept PAR R-280 inbound to PAR, PAR R-100 to D5 PAR, turn RIGHT to PAR, turn LEFT, 235° track, intercept PAR R-280 to ASIMI, join airways R 19/L 995.
ASIMI 2T	07	Climb straight ahead to 700', turn LEFT, intercept PAR R-052 to D12 PAR, turn RIGHT to PAR, PAR R-280 to ASIMI, join airways R 19/L 995.

LGRP/RHO  
 DIAGORAS

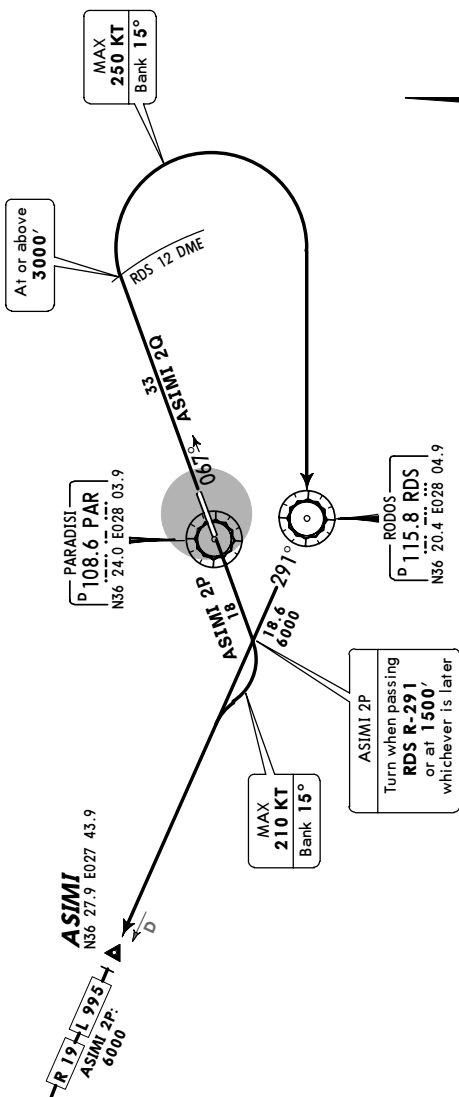
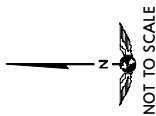
JEPPESEN  
 2 NOV 07 (10-3B)

RODOS, GREECE  
 SID

Apt Elev 19'  
 Trans level: By ATC Trans alt: 6000'  
 When an altitude higher than Trans alt is designated, an equivalent FL shall be specified by ATC.



ASIMI 2P [ASIM2P], ASIMI 2Q [ASIM2Q]  
 RWYS 25, 07 DEPARTURES  
 BASED ON RDS  
 TO BE USED WHEN PAR UNSERVICEABLE



Gnd speed-KT	75	100	150	200	250	300
340' per NM	425	567	851	1134	1418	1701
334' per NM	418	557	835	1114	1392	1671

These SIDs require minimum climb gradients of

ASIMI 2P: 340' per NM (5.6%) up to MEA.  
 ASIMI 2Q: 334' per NM (5.5%) up to 3000'.

RWY 25: Visual climb is required up to 3000'.

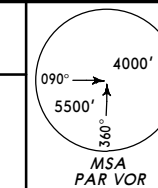
SID	RWY	ROUTING
ASIMI 2P	25	Climb straight ahead, when passing RDS R-291 or at turn RIGHT, intercept RDS R-291 to ASIMI, join airways R 19/L 995.
ASIMI 2Q	07	Climb straight ahead on 067° track, at RDS 12 DME and at or above 3000' turn RIGHT to RDS, turn RIGHT, RDS R-291 to ASIMI, join airways R 19/L 995.

LGRP/RHO  
 DIAGORAS

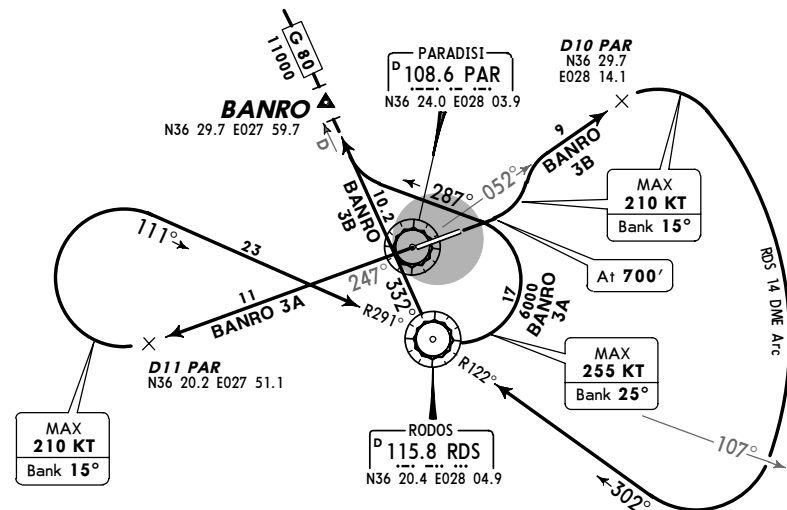
JEPPESEN  
 2 NOV 07 (10-3C)

RODOS, GREECE  
 SID

Apt Elev 19'  
 Trans level: By ATC Trans alt: 6000'  
 When an altitude higher than Trans alt is designated, an equivalent FL shall be specified by ATC.



BANRO 3A [BANR3A], BANRO 3B [BANR3B]  
 RWYS 25, 07 DEPARTURES  
 BASED ON PAR & RDS



These SIDs require minimum climb gradients of

BANRO 3A: 261' per NM (4.3%) up to 8000'.  
 BANRO 3B: 292' per NM (4.8%) up to 700'.

Gnd speed-KT	75	100	150	200	250	300
261' per NM	327	435	653	871	1089	1306
292' per NM	365	486	729	972	1215	1458

RWY 25: Visual climb is required up to 3000'.

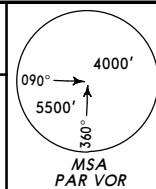
SID	RWY	ROUTING
BANRO 3A	25	Climb on PAR R-247 to D11 PAR, turn RIGHT, intercept RDS R-291 inbound to RDS, turn LEFT, 287° track, intercept RDS R-332 to BANRO, join airway G 80.
BANRO 3B	07	Climb straight ahead to 700', turn LEFT, intercept PAR R-052 to D10 PAR, turn RIGHT, along RDS 14 DME arc, when passing RDS R-107 turn RIGHT, intercept RDS R-122 inbound to RDS, turn RIGHT, RDS R-332 to BANRO, join airway G 80.

LGRP/RHO  
 DIAGORAS

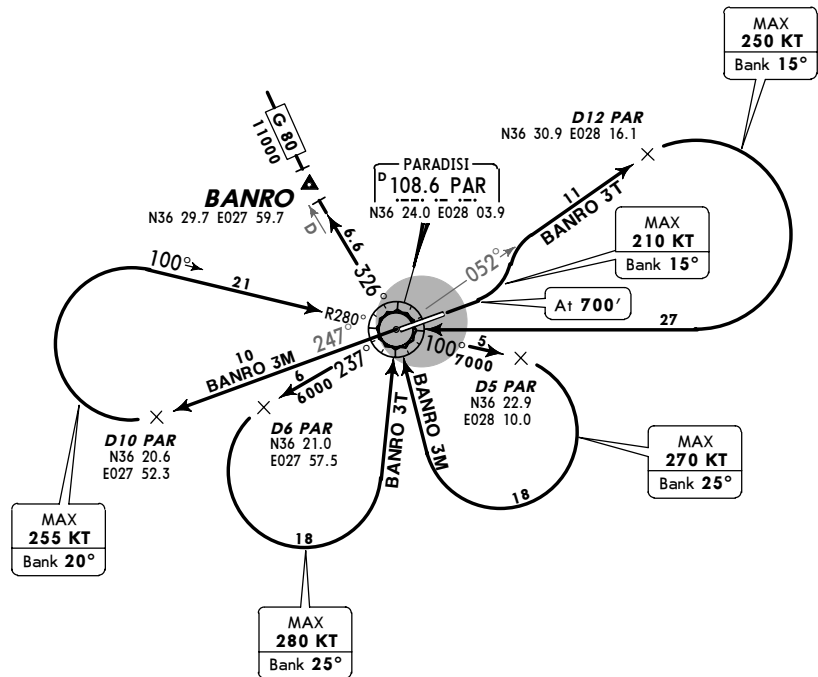
JEPPESEN  
 2 NOV 07 (10-3D)

RODOS, GREECE  
 SID

Apt Elev 19'  
 Trans level: By ATC Trans alt: 6000'  
 When an altitude higher than Trans alt is designated, an equivalent FL shall be specified by ATC.



**BANRO 3M [BANR3M], BANRO 3T [BANR3T]**  
 RWYS 25, 07 DEPARTURES  
 BASED ON PAR



These SIDs require minimum climb gradients of  
**BANRO 3M:** 249' per NM (4.1%) up to 11000'.  
**BANRO 3T:** 292' per NM (4.8%) up to 700'.

Gnd speed-KT	75	100	150	200	250	300
249' per NM	311	415	623	830	1038	1246
292' per NM	365	486	729	972	1215	1458

**RWY 25:** Visual climb is required up to 300'.

SID	RWY	ROUTING
BANRO 3M	25	Climb on PAR R-247 to D10 PAR, turn RIGHT, intercept PAR R-280 inbound to PAR, PAR R-100 to D5 PAR, turn RIGHT to PAR, PAR R-326 to BANRO, join airway <b>G 80</b> .
BANRO 3T	07	Climb straight ahead to 700', turn LEFT, intercept PAR R-052 to D12 PAR, turn RIGHT to PAR, turn LEFT, PAR R-237 to D6 PAR, turn LEFT to PAR, turn LEFT, PAR R-326 to BANRO, join airway <b>G 80</b> .

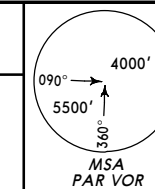


LGRP/RHO  
 DIAGORAS

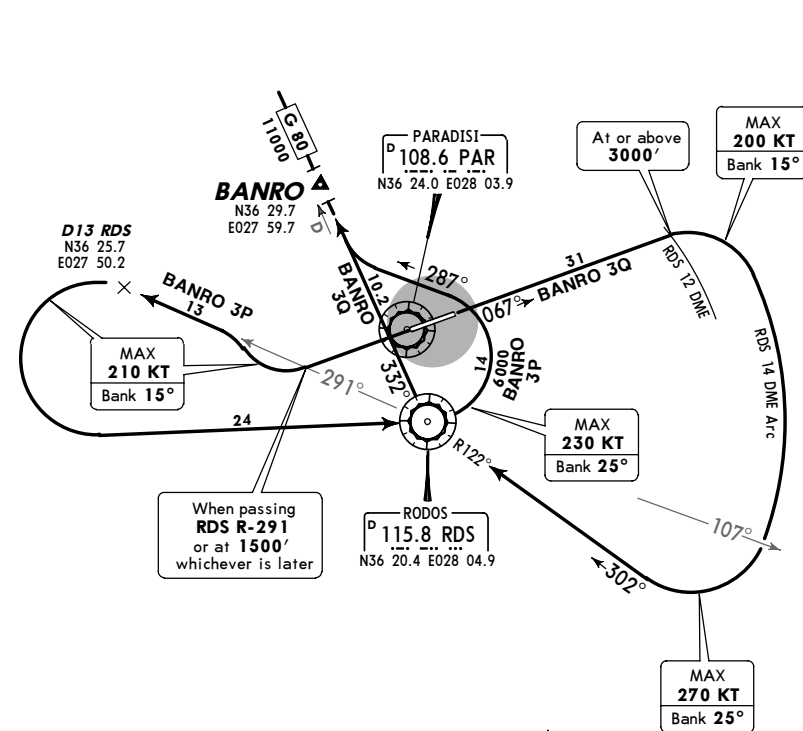
JEPPESEN  
 2 NOV 07 (10-3E)

RODOS, GREECE  
 SID

Apt Elev 19'  
 Trans level: By ATC Trans alt: 6000'  
 When an altitude higher than Trans alt is designated, an equivalent FL shall be specified by ATC.



**BANRO 3P [BANR3P], BANRO 3Q [BANR3Q]**  
 RWYS 25, 07 DEPARTURES  
 BASED ON RDS  
 TO BE USED WHEN PAR UNSERVICEABLE



These SIDs require minimum climb gradients of  
**BANRO 3P:** 340' per NM (5.6%) up to MEA.  
**BANRO 3Q:** 334' per NM (5.5%) up to 3000'.

Gnd speed-KT	75	100	150	200	250	300
340' per NM	425	567	851	1134	1418	1701
334' per NM	418	557	835	1114	1392	1671

**RWY 25:** Visual climb is required up to 300'.

SID	RWY	ROUTING
BANRO 3P	25	Climb straight ahead, when passing RDS R-291 or at 1500', whichever is later, turn RIGHT, intercept RDS R-291 to D13 RDS, turn LEFT to RDS, turn LEFT, 287° track, intercept RDS R-332 to BANRO, join airway <b>G 80</b> .
BANRO 3Q	07	Climb straight ahead on 067° track, at RDS 12 DME and at or above 3000' turn RIGHT, along RDS 14 DME arc, when passing RDS R-107 turn RIGHT, intercept RDS R-122 inbound to RDS, turn RIGHT, RDS R-332 to BANRO, join airway <b>G 80</b> .



LGRP/RHO  
 DIAGORAS

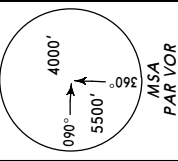


4 MAY 07 (10-3F) Eff 10 May

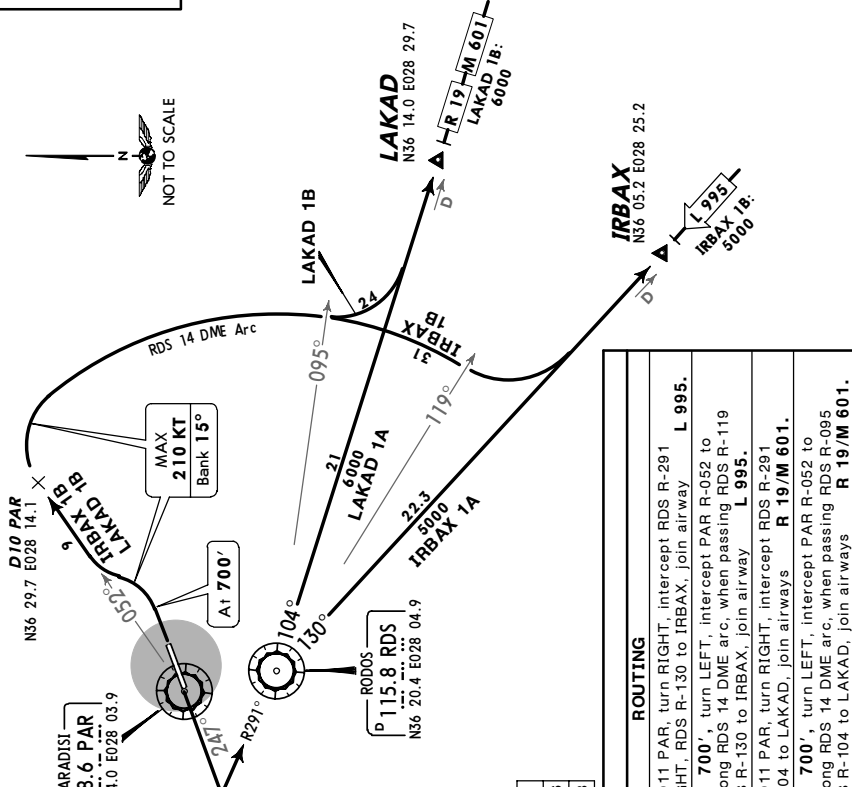
RODOS, GREECE

SID

Apt Elev 19'  
 Trans level: By ATC Trans alt: 6000'  
 When an altitude higher than Trans alt is designated, an equivalent FL shall be specified by ATC.



IRBAX 1A [IRBA1A], IRBAX 1B [IRBA1B]  
 LAKAD 1A [LAKA1A], LAKAD 1B [LAKA1B]  
 RWYS 25, 07 DEPARTURES  
 BASED ON PAR & RDS



These SIDs require minimum climb gradients of  
 IRBAX 1A: 261' per NM (4.3%) up to 5000'.  
 IRBAX 1B, LAKAD 1B: 292' per NM (4.8%) up to 700'.  
 LAKAD 1A: 261' per NM (4.3%) up to 6000'.

Gnd speed-KT	75	100	150	200	250	300
261' per NM	327	435	653	871	1089	1306
292' per NM	365	486	729	972	1215	1458

RWY 25: Visual climb is required up to 300'.

SID	RWY	ROUTING
IRBAX 1A	25	Climb on PAR R-247 to D11 PAR, turn RIGHT, intercept RDS R-291 inbound to RDS, turn RIGHT, RDS R-130 to IRBAX, join airway L 995.
IRBAX 1B	07	Climb straight ahead to 700', turn LEFT, intercept PAR R-052 to D10 PAR, turn RIGHT, along RDS 14 DME arc, when passing RDS R-119 turn LEFT, intercept RDS R-130 to IRBAX, join airway L 995.
LAKAD 1A	25	Climb on PAR R-247 to D11 PAR, turn RIGHT, intercept RDS R-291 inbound to RDS, RDS R-104 to LAKAD, join airways R 19/M 601.
LAKAD 1B	07	Climb straight ahead to 700', turn LEFT, intercept PAR R-052 to D10 PAR, turn RIGHT, along RDS 14 DME arc, when passing RDS R-095 turn LEFT, intercept RDS R-104 to LAKAD, join airways R 19/M 601.

LGRP/RHO  
 DIAGORAS

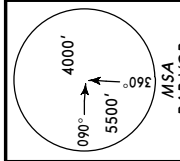


4 MAY 07 (10-3G) Eff 10 May

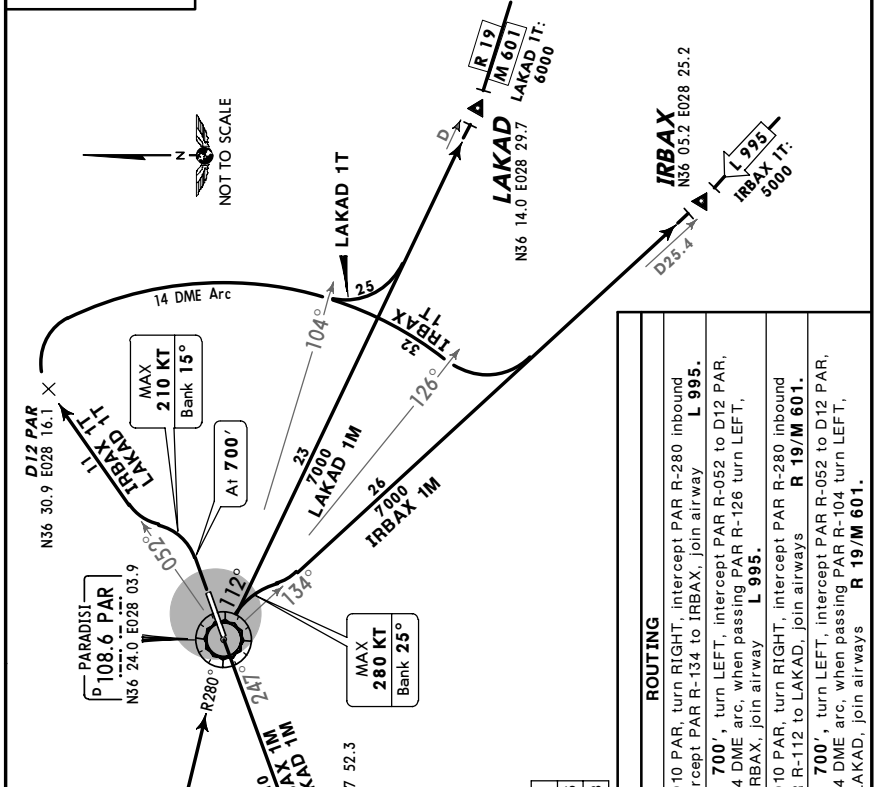
RODOS, GREECE

SID

Apt Elev 19'  
 Trans level: By ATC Trans alt: 6000'  
 When an altitude higher than Trans alt is designated, an equivalent FL shall be specified by ATC.



IRBAX 1M [IRBA1M], IRBAX 1T [IRBA1T]  
 LAKAD 1M [LAKA1M], LAKAD 1T [LAKA1T]  
 RWYS 25, 07 DEPARTURES  
 BASED ON PAR



These SIDs require minimum climb gradients of  
 IRBAX 1M, LAKAD 1M: 237' per NM (3.9%) up to 7000'.  
 IRBAX 1T, LAKAD 1T: 292' per NM (4.8%) up to 700'.

Gnd speed-KT	75	100	150	200	250	300
237' per NM	296	395	592	790	987	1185
292' per NM	365	486	729	972	1215	1458

RWY 25: Visual climb is required up to 300'.

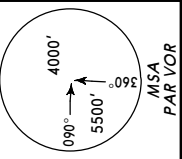
SID	RWY	ROUTING
IRBAX 1M	25	Climb on PAR R-247 to D10 PAR, turn RIGHT, intercept PAR R-280 inbound to PAR, turn RIGHT, intercept PAR R-134 to IRBAX, join airway L 995.
IRBAX 1T	07	Climb straight ahead to 700', turn LEFT, intercept PAR R-052 to D12 PAR, turn RIGHT, along PAR 14 DME arc, when passing PAR R-126 turn LEFT, intercept PAR R-134 to IRBAX, join airway L 995.
LAKAD 1M	25	Climb on PAR R-247 to D10 PAR, turn RIGHT, intercept PAR R-280 inbound to PAR, turn RIGHT, PAR R-112 to LAKAD, join airways R 19/M 601.
LAKAD 1T	07	Climb straight ahead to 700', turn LEFT, intercept PAR R-052 to D12 PAR, turn RIGHT, along PAR 14 DME arc, when passing PAR R-104 turn LEFT, intercept PAR R-112 to LAKAD, join airways R 19/M 601.

LGRP/RHO  
 DIAGORAS

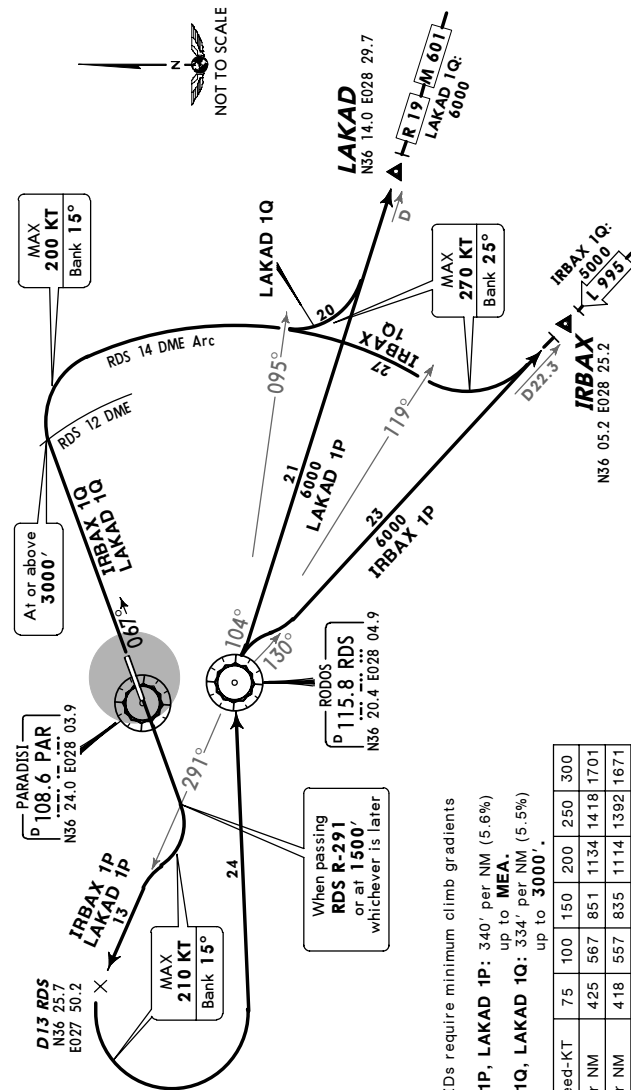
JEPPESEN  
 2 NOV 07 (10-3H)

RODOS, GREECE  
 SID

Apt Elev 19'  
 Trans level: By ATC Trans alt: 6000'  
 When an altitude higher than Trans alt is designated, an equivalent FL shall be specified by ATC.



IRBAX 1P [IRBA1P], IRBAX 1Q [IRBA1Q]  
 LAKAD 1P [LAKA1P], LAKAD 1Q [LAKA1Q]  
 RWYS 25, 07 DEPARTURES  
 BASED ON RDS  
 TO BE USED WHEN PAR UNSERVICEABLE



These SIDs require minimum climb gradients of  
 IRBAX 1P, LAKAD 1P: 340' per NM (5.6%) up to MEA.  
 IRBAX 1Q, LAKAD 1Q: 334' per NM (5.5%) up to 3000'.

Gnd speed-KT	75	100	150	200	250	300
340' per NM	425	567	851	1134	1418	1701
334' per NM	418	557	835	1114	1392	1671

RWY 25: Visual climb is required up to 300'.

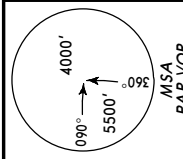
SID	RWY	ROUTING
IRBAX 1P	25	Climb straight ahead, when passing RDS R-291 or at 1500', whichever is later, turn RIGHT, intercept RDS R-291 to D13 RDS, turn LEFT to RDS, turn RIGHT, intercept RDS R-130 to IRBAX, join airway L 995.
IRBAX 1Q	07	Climb straight ahead on 067° track, at RDS 12 DME and at or above 3000' turn RIGHT, along RDS 14 DME arc, when passing RDS R-119 turn LEFT, intercept RDS R-130 to IRBAX, join airway L 995.
LAKAD 1P	25	Climb straight ahead, when passing RDS R-291 or at 1500', whichever is later, turn RIGHT, intercept RDS R-291 to D13 RDS, turn LEFT to RDS, turn RIGHT, RDS R-104 to LAKAD, join airways R 19/M 601.
LAKAD 1Q	07	Climb straight ahead on 067° track, at RDS 12 DME and at or above 3000' turn RIGHT, along RDS 14 DME arc, when passing RDS R-095 turn LEFT, intercept RDS R-104 to LAKAD, join airways R 19/M 601.

LGRP/RHO  
 DIAGORAS

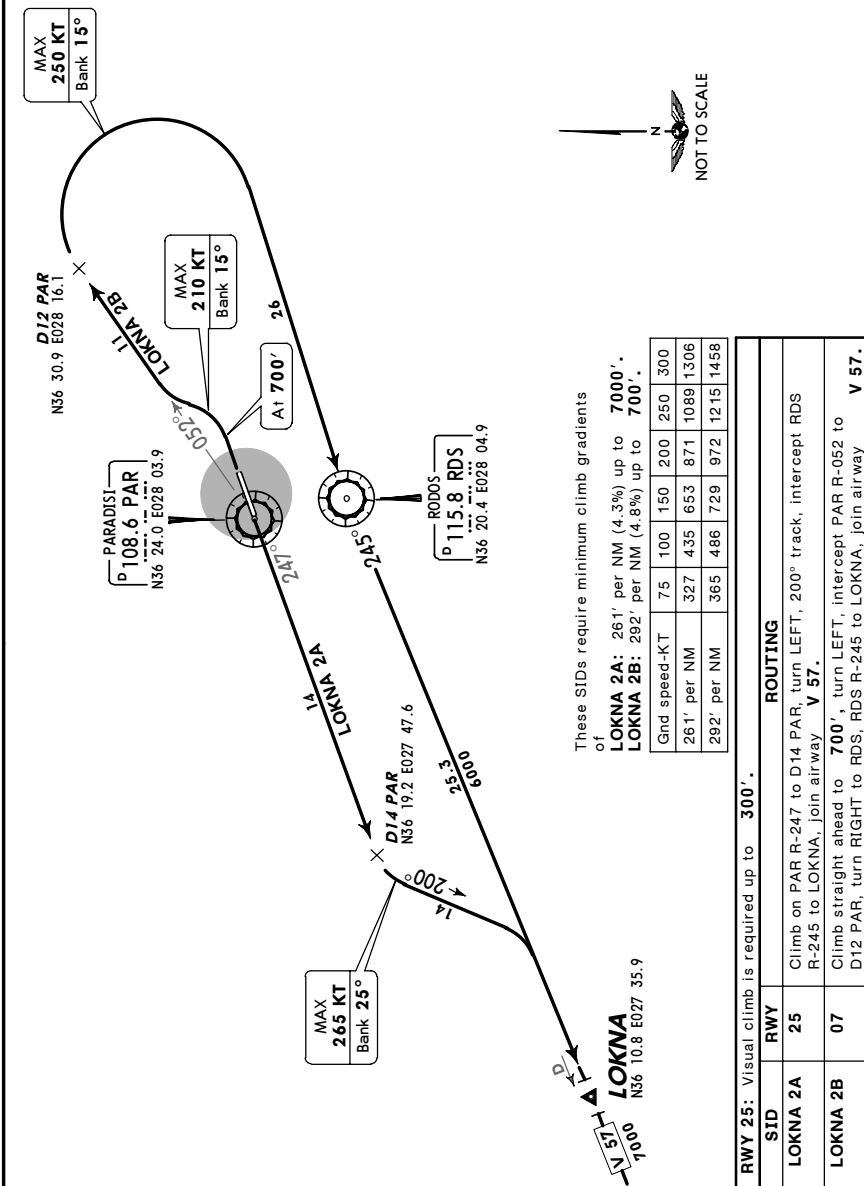
JEPPESEN  
 2 NOV 07 (10-3J)

RODOS, GREECE  
 SID

Apt Elev 19'  
 Trans level: By ATC Trans alt: 6000'  
 When an altitude higher than Trans alt is designated, an equivalent FL shall be specified by ATC.



LOKNA 2A [LOKN2A], LOKNA 2B [LOKN2B]  
 RWYS 25, 07 DEPARTURES  
 BASED ON PAR & RDS



These SIDs require minimum climb gradients of  
 LOKNA 2A: 261' per NM (4.3%) up to 7000'.  
 LOKNA 2B: 292' per NM (4.8%) up to 700'.

Gnd speed-KT	75	100	150	200	250	300
261' per NM	327	435	653	871	1089	1306
292' per NM	365	486	729	972	1215	1458

RWY 25: Visual climb is required up to 300'.

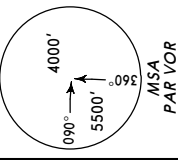
SID	RWY	ROUTING
LOKNA 2A	25	Climb on PAR R-247 to D14 PAR, turn LEFT, 200° track, intercept RDS R-245 to LOKNA, join airway V 57.
LOKNA 2B	07	Climb straight ahead to 700', turn LEFT, intercept PAR R-052 to D12 PAR, turn RIGHT to RDS, RDS R-245 to LOKNA, join airway V 57.

LGRP/RHO  
 DIAGORAS

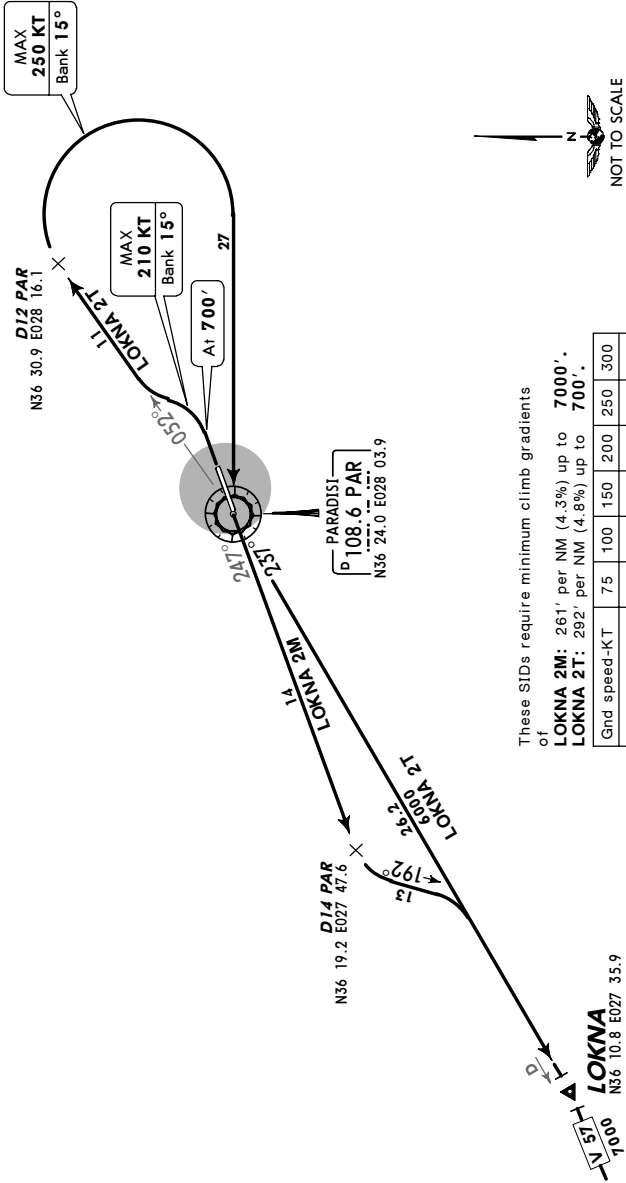
JEPPESEN  
 2 NOV 07 (10-3K)

RODOS, GREECE  
 SID

Apt Elev 19'  
 Trans level: By ATC Trans alt: 6000'  
 When an altitude higher than Trans alt is designated, an equivalent FL shall be specified by ATC.



LOKNA 2M [LOKN2M], LOKNA 2T [LOKN2T]  
 RWYS 25, 07 DEPARTURES  
 BASED ON PAR



These SIDs require minimum climb gradients of

LOKNA 2M: 261' per NM (4.3%) up to 7000'.  
 LOKNA 2T: 292' per NM (4.8%) up to 7000'.

Gnd speed-KT	75	100	150	200	250	300
261' per NM	327	435	653	871	1089	1306
292' per NM	365	486	729	972	1215	1458

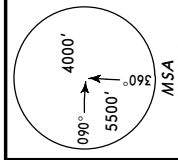
RWY 25: Visual climb is required up to 300'.		ROUTING	
SID	RWY	ROUTING	
LOKNA 2M	25	Climb on PAR R-247 to D14 PAR, turn LEFT, 192° track, intercept PAR R-237 to LOKNA, join airway	V 57.
LOKNA 2T	07	Climb straight ahead to 700', turn LEFT, intercept PAR R-052 to D12 PAR, turn RIGHT to PAR, PAR R-237 to LOKNA, join airway	V 57.

LGRP/RHO  
 DIAGORAS

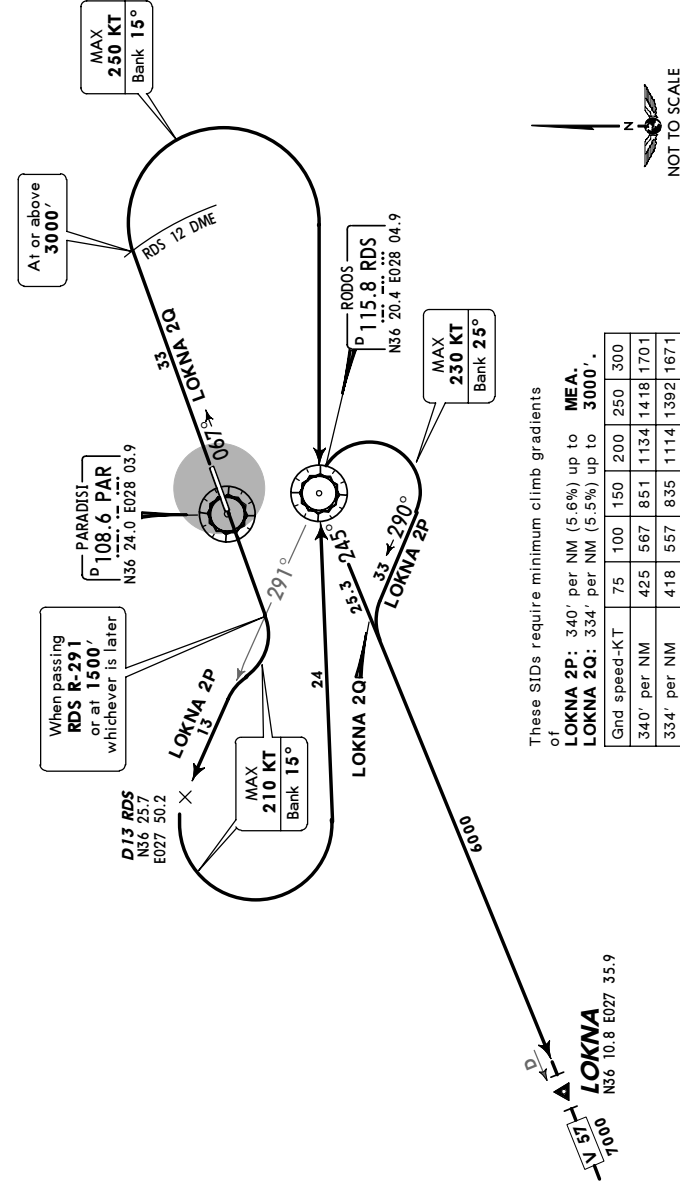
JEPPESEN  
 2 NOV 07 (10-3L)

RODOS, GREECE  
 SID

Apt Elev 19'  
 Trans level: By ATC Trans alt: 6000'  
 When an altitude higher than Trans alt is designated, an equivalent FL shall be specified by ATC.



LOKNA 2P [LOKN2P], LOKNA 2Q [LOKN2Q]  
 RWYS 25, 07 DEPARTURES  
 BASED ON RDS  
 TO BE USED WHEN PAR UNSERVICEABLE



These SIDs require minimum climb gradients of

LOKNA 2P: 340' per NM (5.6%) up to MEA.  
 LOKNA 2Q: 334' per NM (5.5%) up to 3000'.

Gnd speed-KT	75	100	150	200	250	300
340' per NM	425	567	851	1134	1418	1701
334' per NM	418	557	835	1114	1392	1671

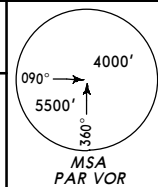
RWY 25: Visual climb is required up to 300'.		ROUTING	
SID	RWY	ROUTING	
LOKNA 2P	25	Climb straight ahead, when passing RDS R-291 or at later, turn RIGHT, intercept RDS R-291 to D13 RDS, turn LEFT to RDS, turn RIGHT, 290° track, intercept RDS R-245 to LOKNA, join airway	V 57.
LOKNA 2Q	07	Climb straight ahead on 067° track, at RDS 12 DME and at or above turn RIGHT to RDS, turn LEFT, RDS R-245 to LOKNA, join airway	V 57.

LGRP/RHO  
 DIAGORAS

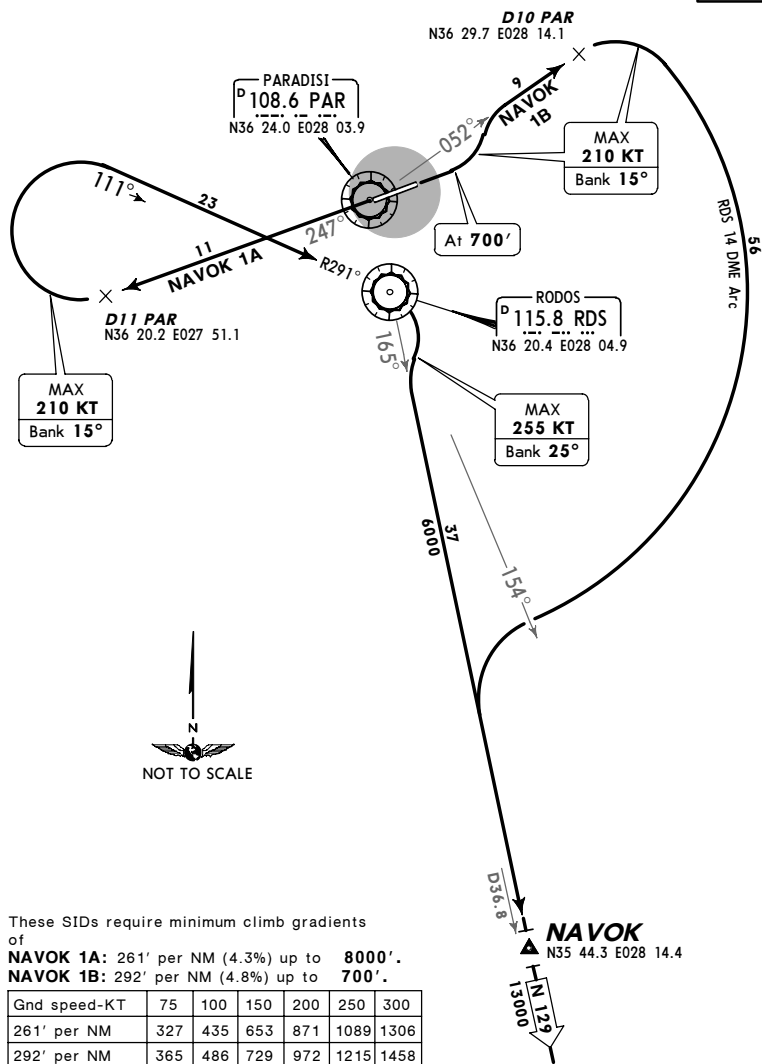
JEPPESEN  
 4 MAY 07 (10-3M) Eff 10 May

RODOS, GREECE  
 SID

Apt Elev 19'  
 Trans level: By ATC Trans alt: 6000'  
 When an altitude higher than Trans alt is designated, an equivalent FL shall be specified by ATC.



NAVOK 1A [NAVO1A], NAVOK 1B [NAVO1B]  
 RWYS 25, 07 DEPARTURES  
 BASED ON PAR & RDS



These SIDs require minimum climb gradients of  
 NAVOK 1A: 261' per NM (4.3%) up to 8000'.  
 NAVOK 1B: 292' per NM (4.8%) up to 700'.

Gnd speed-KT	75	100	150	200	250	300
261' per NM	327	435	653	871	1089	1306
292' per NM	365	486	729	972	1215	1458

RWY 25: Visual climb is required up to 300'.

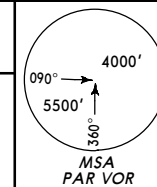
SID	RWY	ROUTING
NAVOK 1A	25	Climb on PAR R-247 to D11 PAR, turn RIGHT, intercept RDS R-291 inbound to RDS, turn RIGHT, intercept RDS R-165 to NAVOK, join airway N 129.
NAVOK 1B	07	Climb straight ahead to 700', turn LEFT, intercept PAR R-052 to D10 PAR, turn RIGHT, along RDS 14 DME arc, when passing RDS R-154 turn LEFT, intercept RDS R-165 to NAVOK, join airway N 129.

LGRP/RHO  
 DIAGORAS

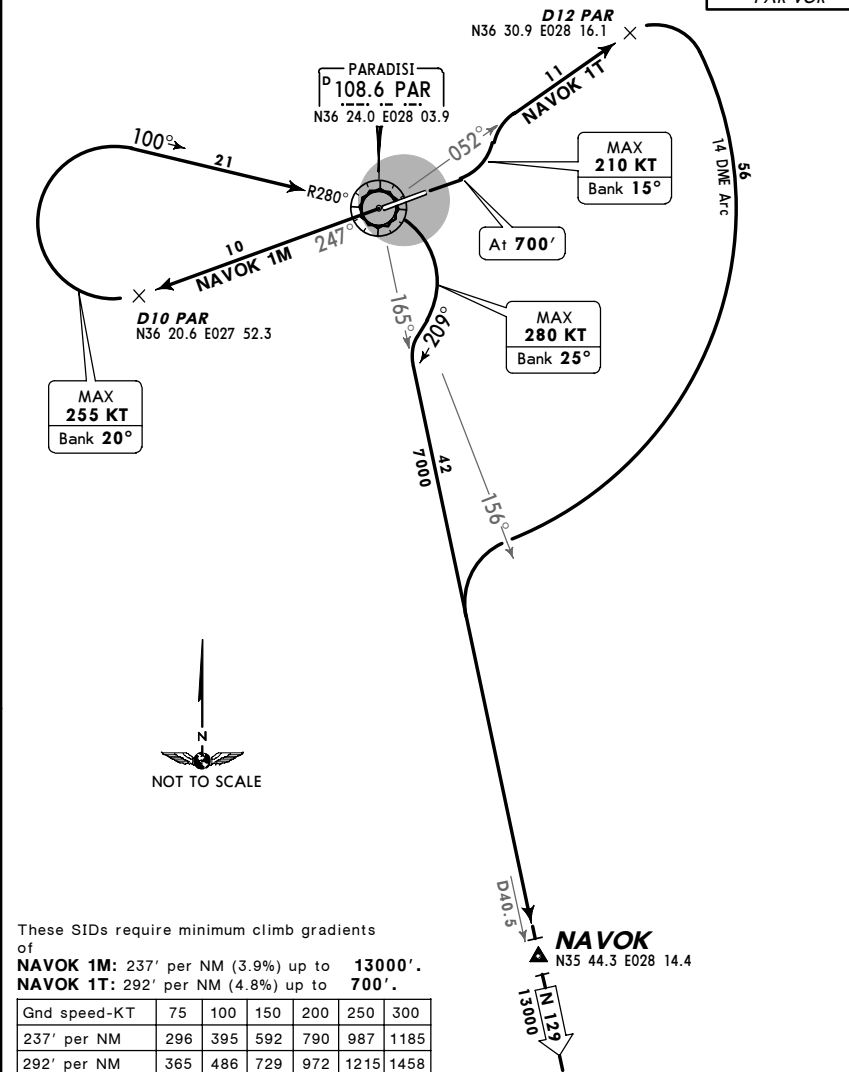
JEPPESEN  
 4 MAY 07 (10-3M) Eff 10 May

RODOS, GREECE  
 SID

Apt Elev 19'  
 Trans level: By ATC Trans alt: 6000'  
 When an altitude higher than Trans alt is designated, an equivalent FL shall be specified by ATC.



NAVOK 1M [NAVO1M], NAVOK 1T [NAVO1T]  
 RWYS 25, 07 DEPARTURES  
 BASED ON PAR



These SIDs require minimum climb gradients of  
 NAVOK 1M: 237' per NM (3.9%) up to 13000'.  
 NAVOK 1T: 292' per NM (4.8%) up to 700'.

Gnd speed-KT	75	100	150	200	250	300
237' per NM	296	395	592	790	987	1185
292' per NM	365	486	729	972	1215	1458

RWY 25: Visual climb is required up to 300'.

SID	RWY	ROUTING
NAVOK 1M	25	Climb on PAR R-247 to D10 PAR, turn RIGHT, intercept PAR R-280 inbound to PAR, turn RIGHT, 209° track, intercept PAR R-165 to NAVOK, join airway N 129.
NAVOK 1T	07	Climb straight ahead to 700', turn LEFT, intercept PAR R-052 to D12 PAR, turn RIGHT, along PAR 14 DME arc, when passing PAR R-156 turn LEFT, intercept PAR R-165 to NAVOK, join airway N 129.

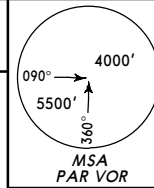


LGRP/RHO  
 DIAGORAS

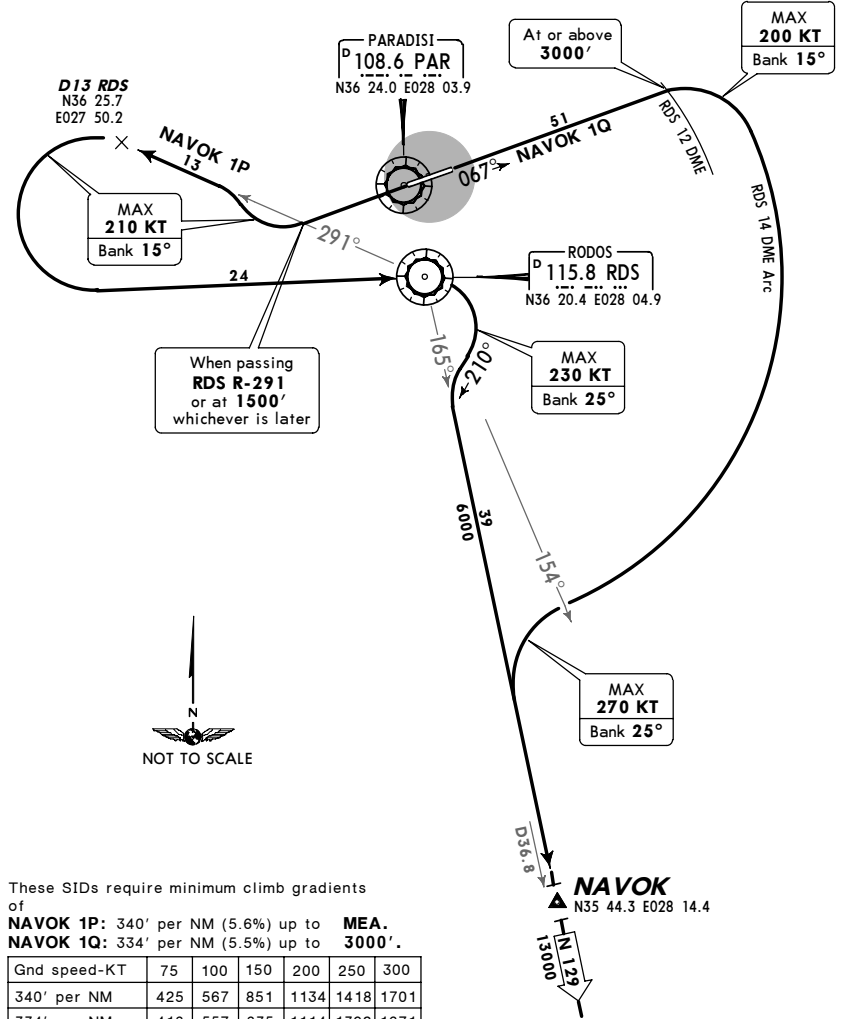
JEPPESEN  
 2 NOV 07 (10-3P)

RODOS, GREECE  
 SID

Apt Elev 19'  
 Trans level: By ATC Trans alt: 6000'  
 When an altitude higher than Trans alt is designated, an equivalent FL shall be specified by ATC.



NAVOK 1P [NAVO1P], NAVOK 1Q [NAVO1Q]  
 RWYS 25, 07 DEPARTURES  
 BASED ON RDS  
 TO BE USED WHEN PAR UNSERVICEABLE



These SIDs require minimum climb gradients of  
 NAVOK 1P: 340' per NM (5.6%) up to MEA.  
 NAVOK 1Q: 334' per NM (5.5%) up to 3000'.

Gnd speed-KT	75	100	150	200	250	300
340' per NM	425	567	851	1134	1418	1701
334' per NM	418	557	835	1114	1392	1671

RWY 25: Visual climb is required up to 300'.

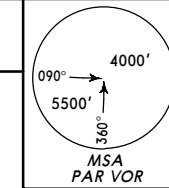
SID	RWY	ROUTING
NAVOK 1P	25	Climb straight ahead, when passing RDS R-291 or at 1500', whichever is later, turn RIGHT, intercept RDS R-291 to D13 RDS, turn LEFT to RDS, turn RIGHT, 210° track, intercept RDS R-165 to NAVOK, join airway N 129.
NAVOK 1Q	07	Climb straight ahead on 067° track, at RDS 12 DME and at or above 3000' turn RIGHT, along RDS 14 DME arc, when passing RDS R-154 turn LEFT, intercept RDS R-165 to NAVOK, join airway N 129.

LGRP/RHO  
 DIAGORAS

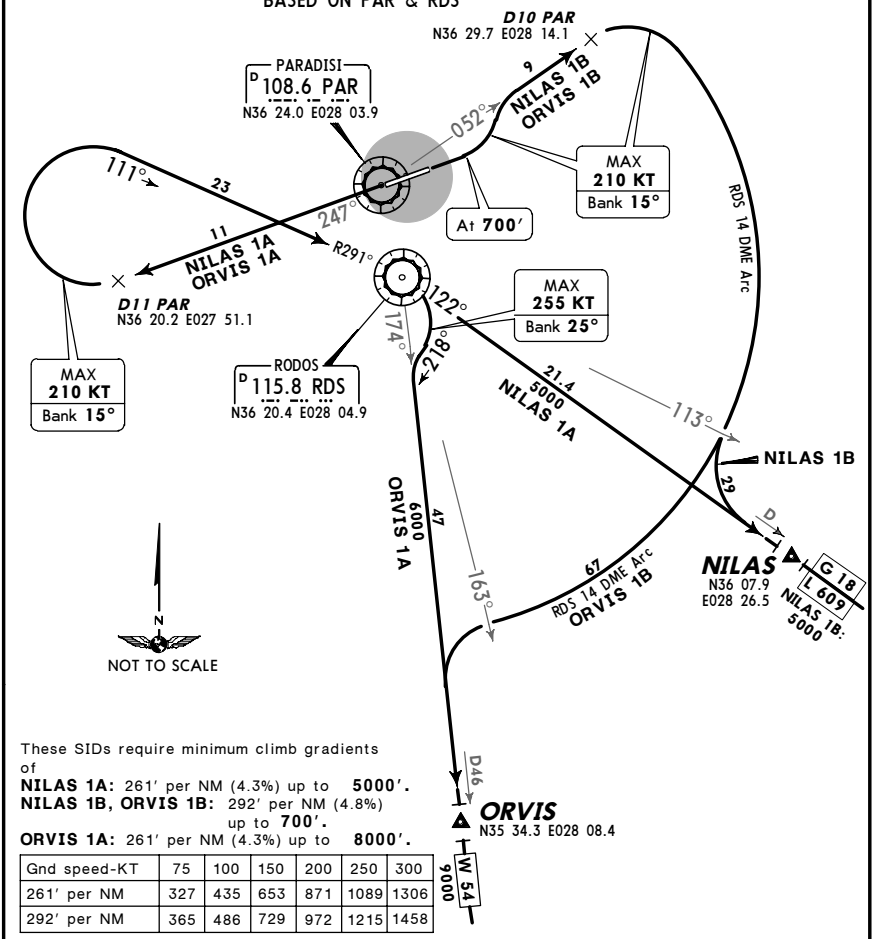
JEPPESEN  
 2 NOV 07 (10-3Q)

RODOS, GREECE  
 SID

Apt Elev 19'  
 Trans level: By ATC Trans alt: 6000'  
 When an altitude higher than Trans alt is designated, an equivalent FL shall be specified by ATC.



NILAS 1A [NILA1A], NILAS 1B [NILA1B]  
 ORVIS 1A [ORV11A], ORVIS 1B [ORV11B]  
 RWYS 25, 07 DEPARTURES  
 BASED ON PAR & RDS



These SIDs require minimum climb gradients of  
 NILAS 1A: 261' per NM (4.3%) up to 5000'.  
 NILAS 1B, ORVIS 1B: 292' per NM (4.8%) up to 700'.  
 ORVIS 1A: 261' per NM (4.3%) up to 8000'.

Gnd speed-KT	75	100	150	200	250	300
261' per NM	327	435	653	871	1089	1306
292' per NM	365	486	729	972	1215	1458

RWY 25: Visual climb is required up to 300'.

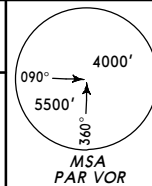
SID	RWY	ROUTING
NILAS 1A	25	Climb on PAR R-247 to D11 PAR, turn RIGHT, intercept RDS R-291 inbound to RDS, turn RIGHT, RDS R-122 to NILAS, join airways G 18/L 609.
NILAS 1B	07	Climb straight ahead to 700', turn LEFT, intercept PAR R-052 to D10 PAR, turn RIGHT, along RDS 14 DME arc, when passing RDS R-113 turn LEFT, intercept RDS R-122 to NILAS, join airways G 18/L 609.
ORVIS 1A	25	Climb on PAR R-247 to D11 PAR, turn RIGHT, intercept RDS R-291 inbound to RDS, turn RIGHT, 218° track, intercept RDS R-174 to ORVIS, join airway W 54.
ORVIS 1B	07	Climb straight ahead to 700', turn LEFT, intercept PAR R-052 to D10 PAR, turn RIGHT, along RDS 14 DME arc, when passing RDS R-163 turn LEFT, intercept RDS R-174 to ORVIS, join airway W 54.

LGRP/RHO  
 DIAGORAS

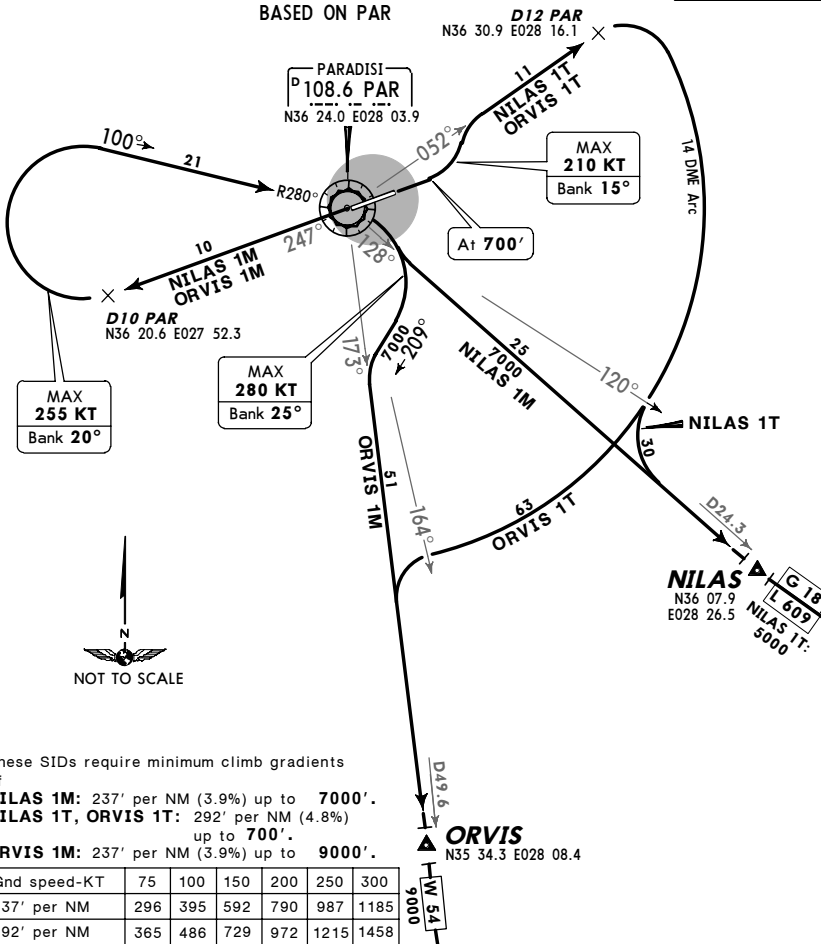
JEPPESEN  
 2 NOV 07 (10-3S)

RODOS, GREECE  
 SID

Apt Elev 19'  
 Trans level: By ATC Trans alt: 6000'  
 When an altitude higher than Trans alt is designated, an equivalent FL shall be specified by ATC.



NILAS 1M [NILA1M], NILAS 1T [NILA1T]  
 ORVIS 1M [ORVI1M], ORVIS 1T [ORVI1T]  
 RWYS 25, 07 DEPARTURES  
 BASED ON PAR



These SIDs require minimum climb gradients of  
 NILAS 1M: 237' per NM (3.9%) up to 7000'.  
 NILAS 1T, ORVIS 1T: 292' per NM (4.8%) up to 700'.  
 ORVIS 1M: 237' per NM (3.9%) up to 9000'.

Gnd speed-KT	75	100	150	200	250	300
237' per NM	296	395	592	790	987	1185
292' per NM	365	486	729	972	1215	1458

RWY 25: Visual climb is required up to 300'.

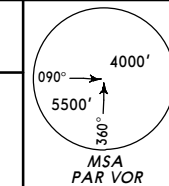
SID	RWY	ROUTING
NILAS 1M	25	Climb on PAR R-247 to D10 PAR, turn RIGHT, intercept PAR R-280 inbound to PAR, turn RIGHT, intercept PAR R-128 to NILAS, join airways G 18/L 609.
NILAS 1T	07	Climb straight ahead to 700', turn LEFT, intercept PAR R-052 to D12 PAR, turn RIGHT, along PAR 14 DME arc, when passing PAR R-120 turn LEFT, intercept PAR R-128 to NILAS, join airways G 18/L 609.
ORVIS 1M	25	Climb on PAR R-247 to D10 PAR, turn RIGHT, intercept PAR R-280 inbound to PAR, turn RIGHT, 209° track, intercept PAR R-173 to ORVIS, join airway W 54.
ORVIS 1T	07	Climb straight ahead to 700', turn LEFT, intercept PAR R-052 to D12 PAR, turn RIGHT, along PAR 14 DME arc, when passing PAR R-164 turn LEFT, intercept PAR R-173 to ORVIS, join airway W 54.

LGRP/RHO  
 DIAGORAS

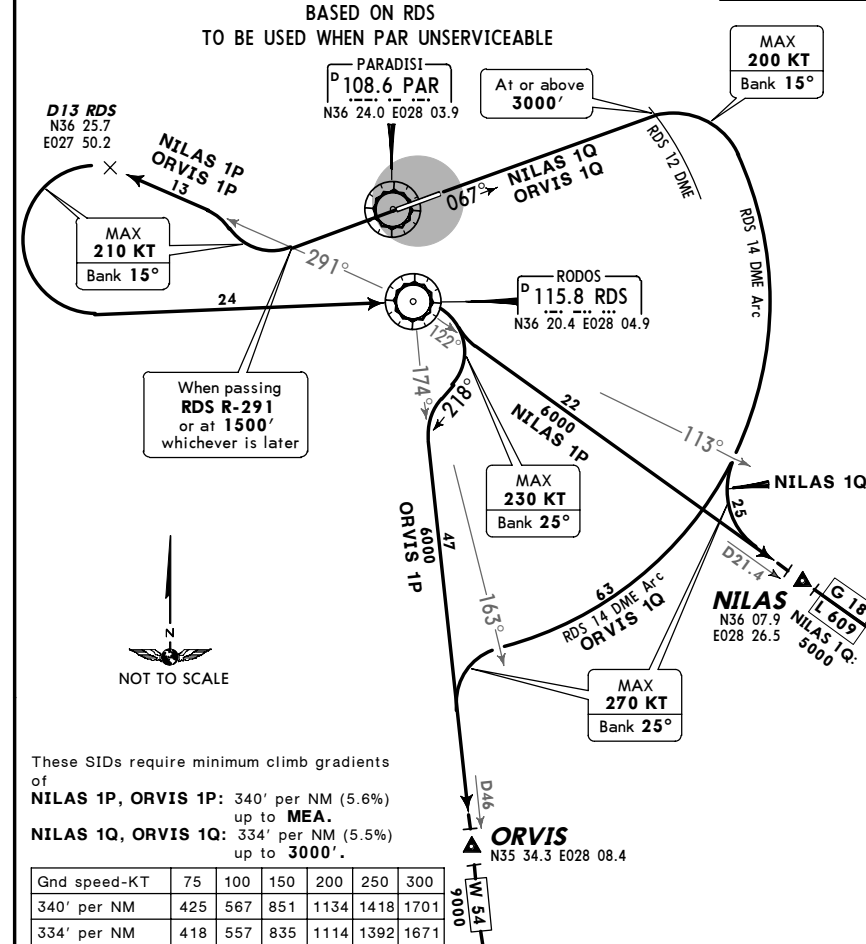
JEPPESEN  
 2 NOV 07 (10-3T)

RODOS, GREECE  
 SID

Apt Elev 19'  
 Trans level: By ATC Trans alt: 6000'  
 When an altitude higher than Trans alt is designated, an equivalent FL shall be specified by ATC.



NILAS 1P [NILA1P], NILAS 1Q [NILA1Q]  
 ORVIS 1P [ORVI1P], ORVIS 1Q [ORVI1Q]  
 RWYS 25, 07 DEPARTURES  
 BASED ON RDS  
 TO BE USED WHEN PAR UNSERVICEABLE



These SIDs require minimum climb gradients of  
 NILAS 1P, ORVIS 1P: 340' per NM (5.6%) up to MEA.  
 NILAS 1Q, ORVIS 1Q: 334' per NM (5.5%) up to 3000'.

Gnd speed-KT	75	100	150	200	250	300
340' per NM	425	567	851	1134	1418	1701
334' per NM	418	557	835	1114	1392	1671

RWY 25: Visual climb is required up to 300'.

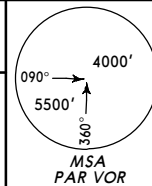
SID	RWY	ROUTING
NILAS 1P	25	Climb straight ahead, when passing RDS R-291 or at 1500', whichever is later, turn RIGHT, intercept RDS R-291 to D13 RDS, turn LEFT to RDS, turn RIGHT, intercept RDS R-122 to NILAS, join airways G 18/L 609.
NILAS 1Q	07	Climb straight ahead on 067° track, at RDS 12 DME and at or above 3000' turn RIGHT, along RDS 14 DME arc, when passing RDS R-113 turn LEFT, intercept RDS R-122 to NILAS, join airways G 18/L 609.
ORVIS 1P	25	Climb straight ahead, when passing RDS R-291 or at 1500', whichever is later, turn RIGHT, intercept RDS R-291 to D13 RDS, turn LEFT to RDS, turn RIGHT, 218° track, intercept RDS R-174 to ORVIS, join airway W 54.
ORVIS 1Q	07	Climb straight ahead on 067° track, at RDS 12 DME and at or above 3000' turn RIGHT, along RDS 14 DME arc, when passing RDS R-163 turn LEFT, intercept RDS R-174 to ORVIS, join airway W 54.

LGRP/RHO  
 DIAGORAS

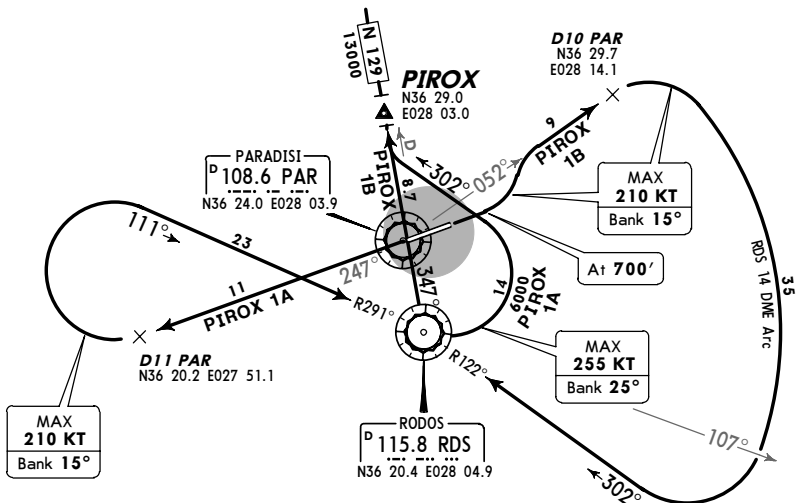
JEPPESEN  
 4 MAY 07 (10-3U) Eff 10 May

RODOS, GREECE  
 SID

Apt Elev 19'  
 Trans level: By ATC Trans alt: 6000'  
 When an altitude higher than Trans alt is designated, an equivalent FL shall be specified by ATC.



PIROX 1A [PIRO1A], PIROX 1B [PIRO1B]  
 RWYS 25, 07 DEPARTURES  
 BASED ON PAR & RDS



These SIDs require minimum climb gradients of  
 PIROX 1A: 273' per NM (4.5%) up to 13000'.  
 PIROX 1B: 292' per NM (4.8%) up to 700'.

Gnd speed-KT	75	100	150	200	250	300
273' per NM	342	456	684	911	1139	1367
292' per NM	365	486	729	972	1215	1458

RWY 25: Visual climb is required up to 300'.

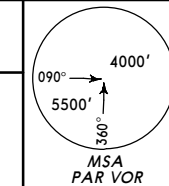
SID	RWY	ROUTING
PIROX 1A	25	Climb on PAR R-247 to D11 PAR, turn RIGHT, intercept RDS R-291 inbound to RDS, turn LEFT, 302° track, intercept RDS R-347 to PIROX, join airway <b>N 129</b> .
PIROX 1B	07	Climb straight ahead to 700', turn LEFT, intercept PAR R-052 to D10 PAR, turn RIGHT, along RDS 14 DME arc, when passing RDS R-107 turn RIGHT, intercept RDS R-122 inbound to RDS, turn RIGHT, RDS R-347 to PIROX, join airway <b>N 129</b> .

LGRP/RHO  
 DIAGORAS

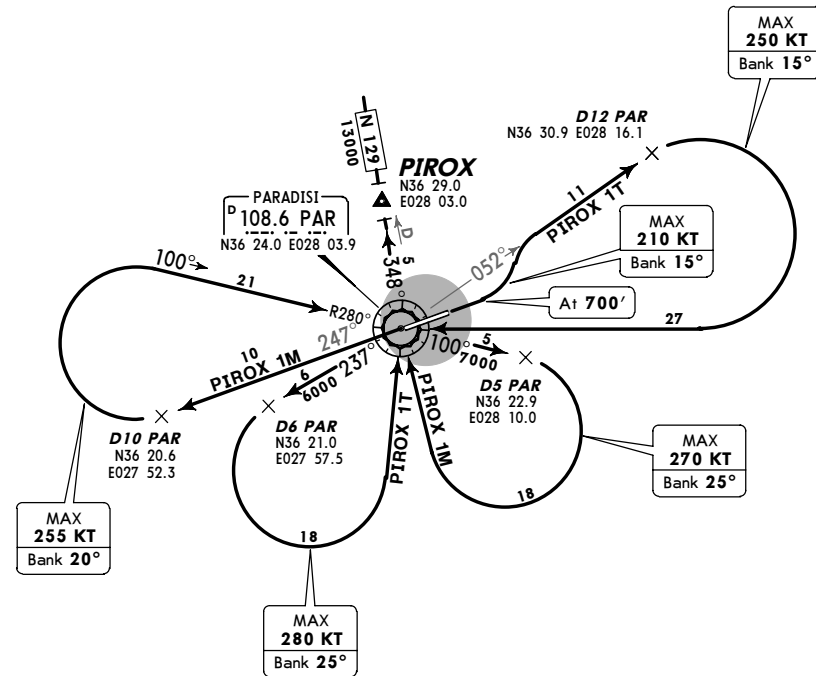
JEPPESEN  
 4 MAY 07 (10-3V) Eff 10 May

RODOS, GREECE  
 SID

Apt Elev 19'  
 Trans level: By ATC Trans alt: 6000'  
 When an altitude higher than Trans alt is designated, an equivalent FL shall be specified by ATC.



PIROX 1M [PIRO1M], PIROX 1T [PIRO1T]  
 RWYS 25, 07 DEPARTURES  
 BASED ON PAR



These SIDs require minimum climb gradients of  
 PIROX 1M: 249' per NM (4.1%) up to 13000'.  
 PIROX 1T: 292' per NM (4.8%) up to 700'.

Gnd speed-KT	75	100	150	200	250	300
249' per NM	311	415	623	830	1038	1246
292' per NM	365	486	729	972	1215	1458

RWY 25: Visual climb is required up to 300'.

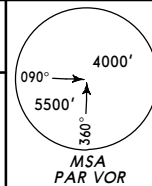
SID	RWY	ROUTING
PIROX 1M	25	Climb on PAR R-247 to D10 PAR, turn RIGHT, intercept PAR R-280 inbound to PAR, PAR R-100 to D5 PAR, turn RIGHT to PAR, PAR R-348 to PIROX, join airway <b>N 129</b> .
PIROX 1T	07	Climb straight ahead to 700', turn LEFT, intercept PAR R-052 to D12 PAR, turn RIGHT to PAR, turn LEFT, PAR R-237 to D6 PAR, turn LEFT to PAR, PAR R-348 to PIROX, join airway <b>N 129</b> .

**LGRP/RHO**  
**DIAGORAS**

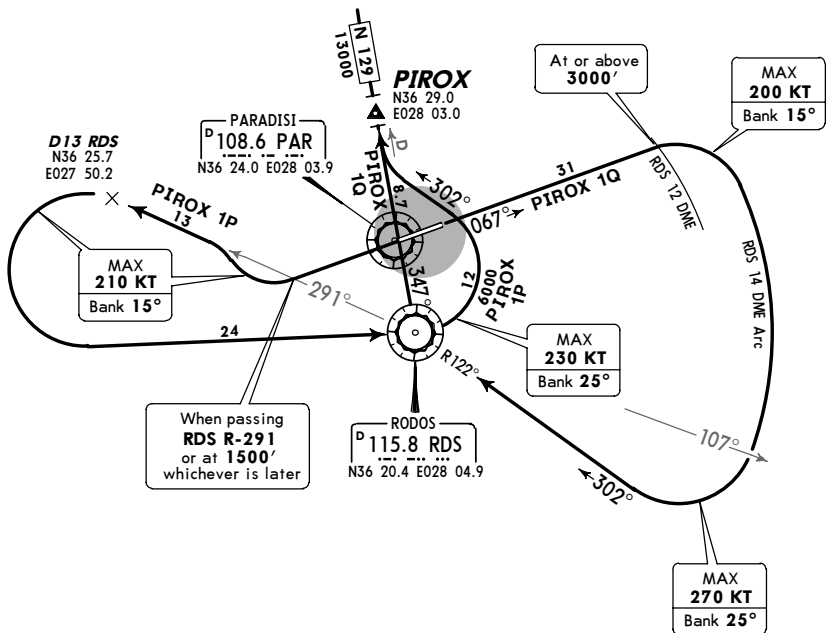
JEPPESEN  
 2 NOV 07 **(10-3W)**

**RODOS, GREECE**  
**SID**

**Apt Elev 19'** Trans level: By ATC Trans alt: 6000'  
 When an altitude higher than Trans alt is designated, an equivalent FL shall be specified by ATC.



**PIROX 1P [PIRO1P], PIROX 1Q [PIRO1Q]**  
**RWYS 25, 07 DEPARTURES**  
 BASED ON RDS  
 TO BE USED WHEN PAR UNSERVICEABLE



These SIDs require minimum climb gradients of  
**PIROX 1P:** 340' per NM (5.6%) up to **MEA.**  
**PIROX 1Q:** 334' per NM (5.5%) up to **3000'.**

Gnd speed-KT	75	100	150	200	250	300
340' per NM	425	567	851	1134	1418	1701
334' per NM	418	557	835	1114	1392	1671

**RWY 25:** Visual climb is required up to **300'**.

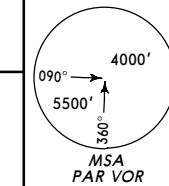
SID	RWY	ROUTING
<b>PIROX 1P</b>	<b>25</b>	Climb straight ahead, when passing RDS R-291 or at <b>1500'</b> , whichever is later, turn RIGHT, intercept RDS R-291 to D13 RDS, turn LEFT to RDS, turn LEFT, 302° track, intercept RDS R-347 to PIROX, join airway <b>N 129.</b>
<b>PIROX 1Q</b>	<b>07</b>	Climb straight ahead on 067° track, at RDS 12 DME and at or above <b>3000'</b> turn RIGHT, along RDS 14 DME arc, when passing RDS R-107 turn RIGHT, intercept RDS R-122 inbound to RDS, turn RIGHT, RDS R-347 to PIROX, join airway <b>N 129.</b>

**LGRP/RHO**  
**DIAGORAS**

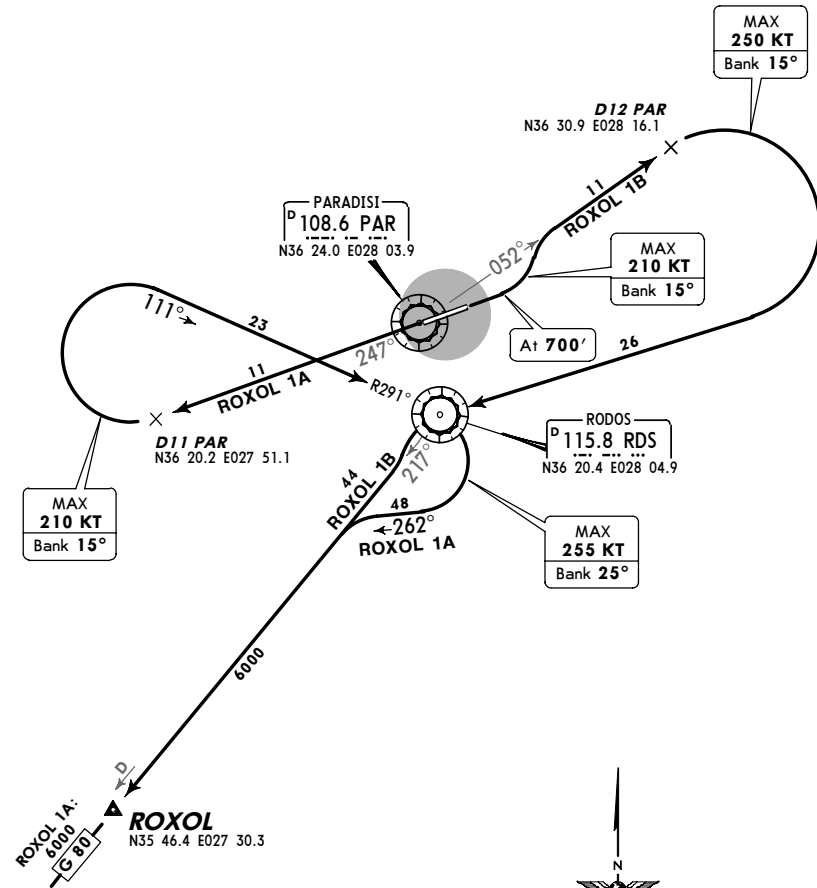
JEPPESEN  
 2 NOV 07 **(10-3X)**

**RODOS, GREECE**  
**SID**

**Apt Elev 19'** Trans level: By ATC Trans alt: 6000'  
 When an altitude higher than Trans alt is designated, an equivalent FL shall be specified by ATC.



**ROXOL 1A [ROXO1A], ROXOL 1B [ROXO1B]**  
**RWYS 25, 07 DEPARTURES**  
 BASED ON PAR & RDS



These SIDs require minimum climb gradients of  
**ROXOL 1A:** 261' per NM (4.3%) up to **6000'**.  
**ROXOL 1B:** 292' per NM (4.8%) up to **700'**.

Gnd speed-KT	75	100	150	200	250	300
261' per NM	327	435	653	871	1089	1306
292' per NM	365	486	729	972	1215	1458

**RWY 25:** Visual climb is required up to **300'**.

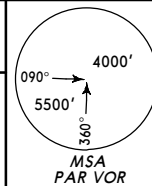
SID	RWY	ROUTING
<b>ROXOL 1A</b>	<b>25</b>	Climb on PAR R-247 to D11 PAR, turn RIGHT, intercept RDS R-291 inbound to RDS, turn RIGHT, 262° track, intercept RDS R-217 to ROXOL, join airway <b>G 80.</b>
<b>ROXOL 1B</b>	<b>07</b>	Climb straight ahead to <b>700'</b> , turn LEFT, intercept PAR R-052 to D12 PAR, turn RIGHT to RDS, turn LEFT, intercept RDS R-217 to ROXOL, join airway <b>G 80.</b>

LGRP/RHO  
 DIAGORAS

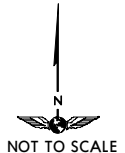
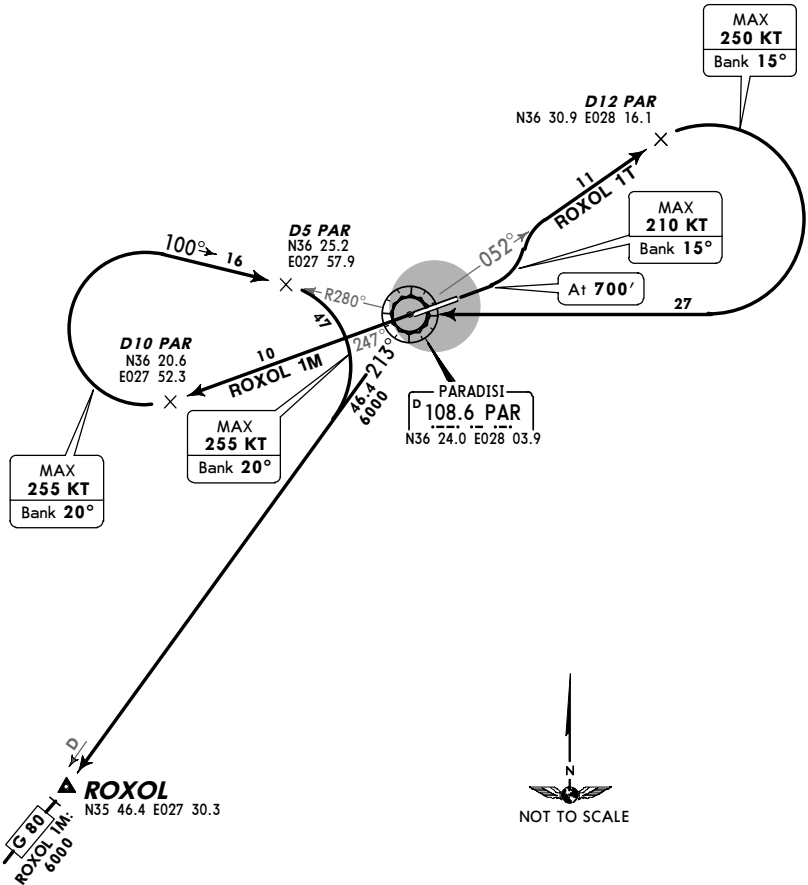
JEPPESEN  
 4 MAY 07 (10-3X1) Eff 10 May

RODOS, GREECE  
 SID

Apt Elev 19'  
 Trans level: By ATC Trans alt: 6000'  
 When an altitude higher than Trans alt is designated, an equivalent FL shall be specified by ATC.



ROXOL 1M [ROXO1M], ROXOL 1T [ROXO1T]  
 RWYS 25, 07 DEPARTURES  
 BASED ON PAR



These SIDs require minimum climb gradients of  
 ROXOL 1M: 237' per NM (3.9%) up to 6000'.  
 ROXOL 1T: 292' per NM (4.8%) up to 700'.

Gnd speed-KT	75	100	150	200	250	300
237' per NM	296	395	592	790	987	1185
292' per NM	365	486	729	972	1215	1458

RWY 25: Visual climb is required up to 300'.

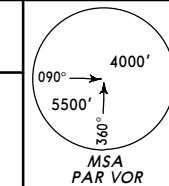
SID	RWY	ROUTING
ROXOL 1M	25	Climb on PAR R-247 to D10 PAR, turn RIGHT, intercept PAR R-280 inbound to D5 PAR, turn RIGHT, intercept PAR R-213 to ROXOL, join airway G 80.
ROXOL 1T	07	Climb straight ahead to 700', turn LEFT, intercept PAR R-052 to D12 PAR, turn RIGHT to PAR, PAR R-213 to ROXOL, join airway G 80.

LGRP/RHO  
 DIAGORAS

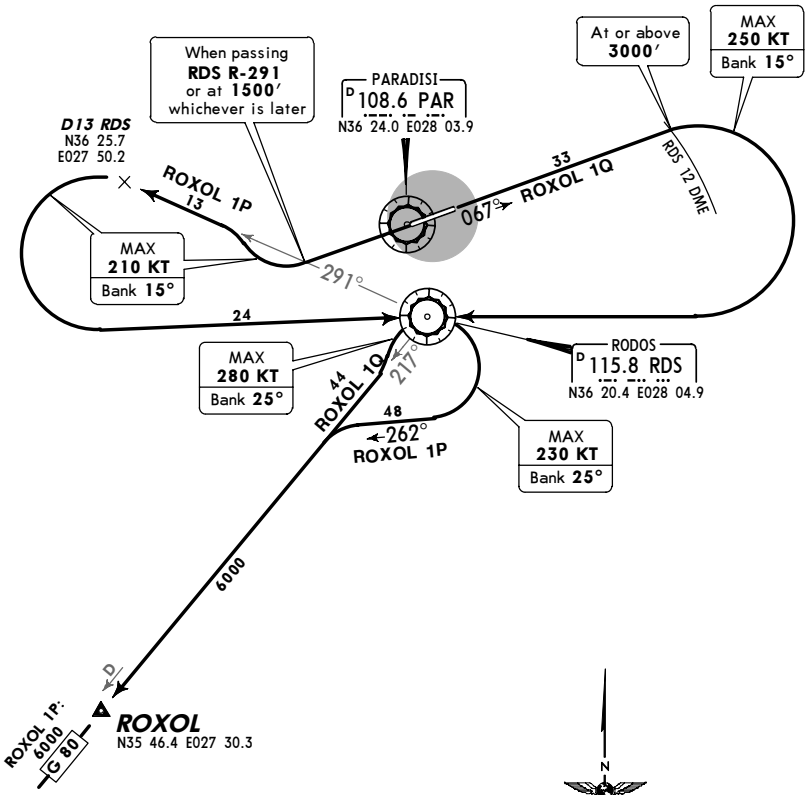
JEPPESEN  
 4 MAY 07 (10-3X2) Eff 10 May

RODOS, GREECE  
 SID

Apt Elev 19'  
 Trans level: By ATC Trans alt: 6000'  
 When an altitude higher than Trans alt is designated, an equivalent FL shall be specified by ATC.



ROXOL 1P [ROXO1P], ROXOL 1Q [ROXO1Q]  
 RWYS 25, 07 DEPARTURES  
 BASED ON RDS  
 TO BE USED WHEN PAR UNSERVICEABLE



These SIDs require minimum climb gradients of  
 ROXOL 1P: 340' per NM (5.6%) up to MEA.  
 ROXOL 1Q: 334' per NM (5.5%) up to 3000'.

Gnd speed-KT	75	100	150	200	250	300
340' per NM	425	567	851	1134	1418	1701
334' per NM	418	557	835	1114	1392	1671

RWY 25: Visual climb is required up to 300'.

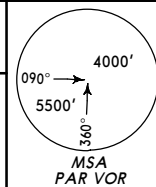
SID	RWY	ROUTING
ROXOL 1P	25	Climb straight ahead, when passing PAR R-291 or at 1500', whichever is later, turn RIGHT, intercept RDS R-291 to D13 RDS, turn LEFT to RDS, turn RIGHT, 262° track, intercept RDS R-217 to ROXOL, join airway G 80.
ROXOL 1Q	07	Climb straight ahead on 067° track, at RDS 12 DME and at or above 3000', turn RIGHT to RDS, turn LEFT, intercept RDS R-217 to ROXOL, join airway G 80.

LGRP/RHO  
 DIAGORAS

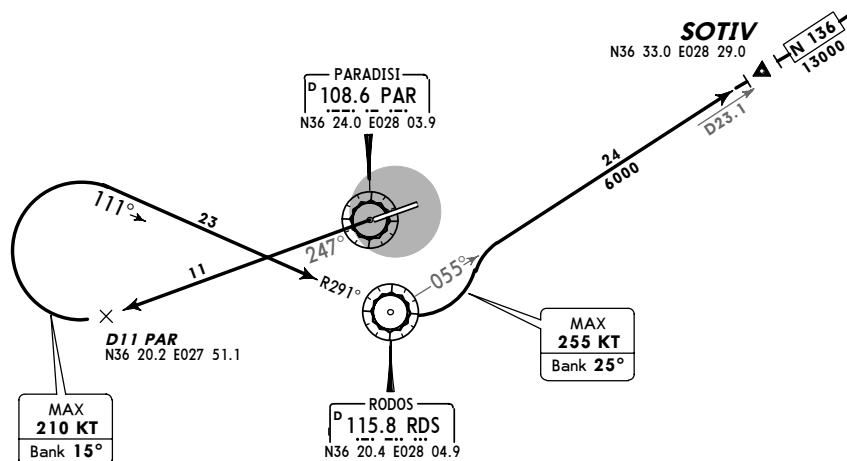
JEPPESEN  
 4 MAY 07 (10-3X3) Eff 10 May

RODOS, GREECE  
 SID

Apt Elev 19'  
 Trans level: By ATC Trans alt: 6000'  
 When an altitude higher than Trans alt is designated, an equivalent FL shall be specified by ATC.



**SOTIV 1A [SOTI1A]**  
**RWY 25 DEPARTURE**  
 BASED ON PAR & RDS



This SID requires a minimum climb gradient of 261' per NM (4.3%) up to 8000'.

Gnd speed-KT	75	100	150	200	250	300
261' per NM	327	435	653	871	1089	1306

Visual climb is required up to 300'.

**ROUTING**

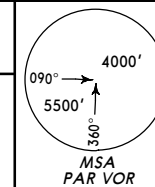
Climb on PAR R-247 to D11 PAR, turn RIGHT, intercept RDS R-291 inbound to RDS, turn LEFT, intercept RDS R-055 to SOTIV, join airway **N 136**.

LGRP/RHO  
 DIAGORAS

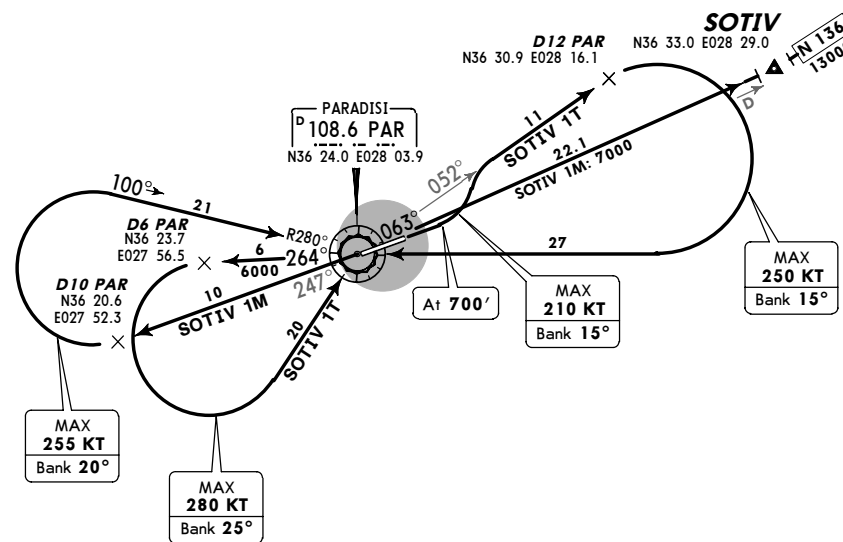
JEPPESEN  
 4 MAY 07 (10-3X4) Eff 10 May

RODOS, GREECE  
 SID

Apt Elev 19'  
 Trans level: By ATC Trans alt: 6000'  
 When an altitude higher than Trans alt is designated, an equivalent FL shall be specified by ATC.



**SOTIV 1M [SOTI1M], SOTIV 1T [SOTI1T]**  
**RWYS 25, 07 DEPARTURES**  
 BASED ON PAR



These SIDs require minimum climb gradients of  
**SOTIV 1M:** 249' per NM (4.1%) up to 13000'.  
**SOTIV 1T:** 292' per NM (4.8%) up to 700'.

Gnd speed-KT	75	100	150	200	250	300
249' per NM	311	415	623	830	1038	1246
292' per NM	365	486	729	972	1215	1458

**RWY 25:** Visual climb is required up to 300'.

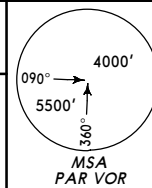
SID	RWY	ROUTING
<b>SOTIV 1M</b>	<b>25</b>	Climb on PAR R-247 to D10 PAR, turn RIGHT, intercept PAR R-280 inbound to PAR, turn LEFT, PAR R-063 to SOTIV, join airway <b>N 136</b> .
<b>SOTIV 1T</b>	<b>07</b>	Climb straight ahead to 700', turn LEFT, intercept PAR R-052 to D12 PAR, turn RIGHT to PAR, PAR R-264 to D6 PAR, turn LEFT to PAR, PAR R-063 to SOTIV, join airway <b>N 136</b> .

LGRP/RHO  
 DIAGORAS

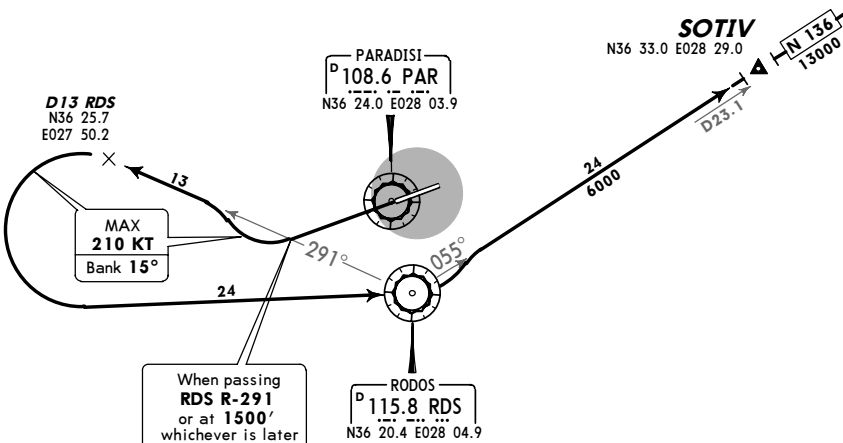
JEPPESEN  
 2 NOV 07 (10-3X5)

RODOS, GREECE  
 SID

Apt Elev 19'  
 Trans level: By ATC Trans alt: 6000'  
 When an altitude higher than Trans alt is designated, an equivalent FL shall be specified by ATC.



**SOTIV 1P [SOTI1P]**  
**RWY 25 DEPARTURE**  
 BASED ON RDS  
 TO BE USED WHEN PAR UNSERVICEABLE



This SID requires a minimum climb gradient of 340' per NM (5.6%) up to MEA.

Gnd speed-KT	75	100	150	200	250	300
340' per NM	425	567	851	1134	1418	1701

Visual climb is required up to 300'.

**ROUTING**

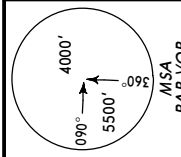
Climb straight ahead, when passing RDS R-291 or at 1500', whichever is later, turn RIGHT, intercept RDS R-291 to D13 RDS, turn LEFT to RDS, turn LEFT, intercept RDS R-055 to SOTIV, join airway N 136.

LGRP/RHO  
 DIAGORAS

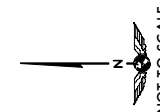
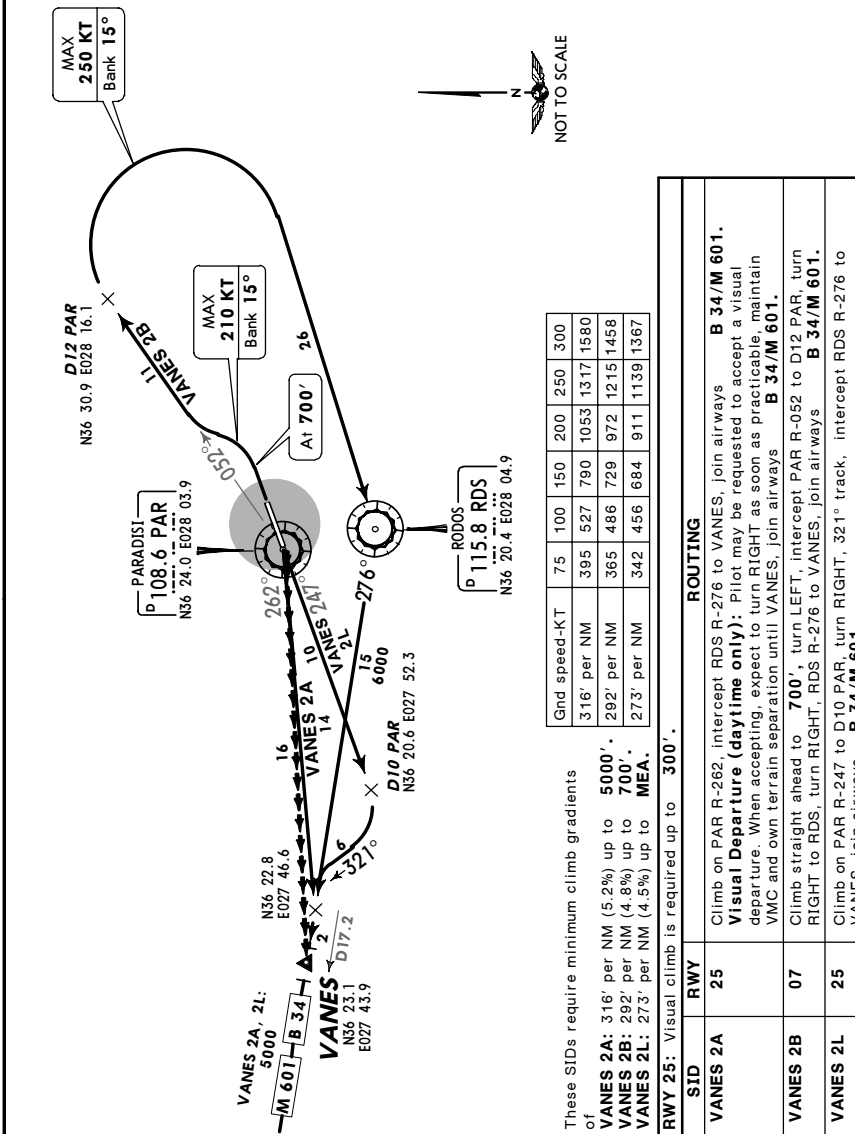
JEPPESEN  
 2 NOV 07 (10-3X6)

RODOS, GREECE  
 SID

Apt Elev 19'  
 Trans level: By ATC Trans alt: 6000'  
 1. When an altitude higher than Trans alt is designated, an equivalent FL shall be specified by ATC. 2. VMC: Visibility 10 km and ceiling at or above 5500'.



**VANES 2A [VANE2A], VANES 2B [VANE2B]**  
**VANES 2L [VANE2L]**  
**RWYS 25, 07 DEPARTURES**  
 BASED ON PAR & RDS



Gnd speed-KT	75	100	150	200	250	300
316' per NM	395	527	790	1053	1317	1580
292' per NM	365	486	729	972	1215	1458
273' per NM	342	456	684	911	1139	1367

These SIDs require minimum climb gradients of  
**VANES 2A:** 316' per NM (5.2%) up to 5000'.  
**VANES 2B:** 292' per NM (4.8%) up to 700'.  
**VANES 2L:** 273' per NM (4.5%) up to MEA.  
**RWY 25:** Visual climb is required up to 300'.

SID	RWY	ROUTING
VANES 2A	25	Climb on PAR R-262, intercept RDS R-276 to VANES, join airways B 34/M 601. Visual Departure (daytime only): Pilot may be requested to accept a visual departure. When accepting, expect to turn RIGHT as soon as practicable, maintain VMC and own terrain separation until VANES, join airways B 34/M 601.
VANES 2B	07	Climb straight ahead to 700', turn LEFT, intercept PAR R-052 to D12 PAR, turn RIGHT to RDS, turn RIGHT, RDS R-276 to VANES, join airways B 34/M 601.
VANES 2L	25	Climb on PAR R-247 to D10 PAR, turn RIGHT, 321° track, intercept RDS R-276 to VANES, join airways B 34/M 601.

LGRP/RHO  
 DIAGORAS

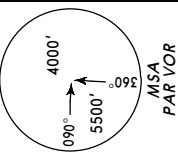


4 MAY 07 (10-3X7) Eff 10 May

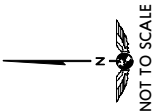
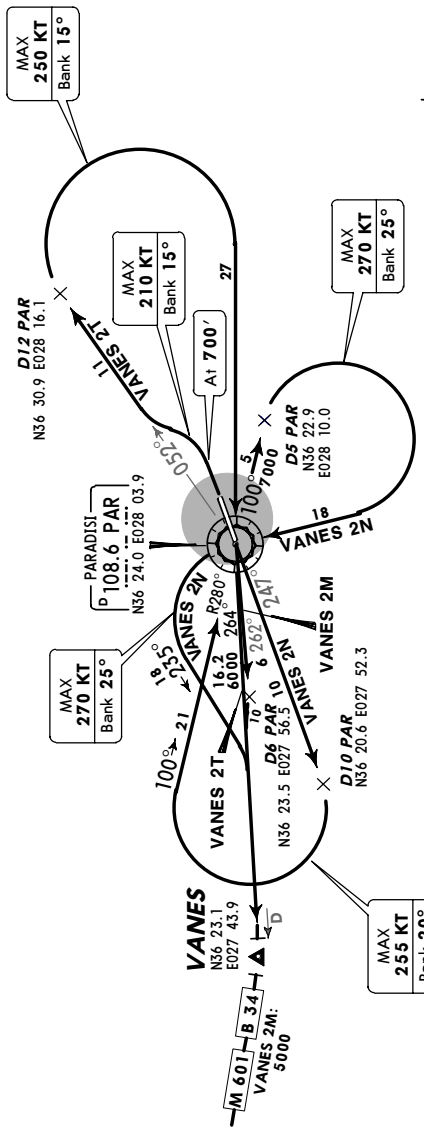
RODOS, GREECE

SID

Apt Elev 19'  
 Trans level: By ATC Trans alt: 6000'  
 When an altitude higher than Trans alt is designated, an equivalent FL shall be specified by ATC.



VANES 2M [VANE2M], VANES 2N [VANE2N]  
 VANES 2T [VANE2T]  
 RWYS 25, 07 DEPARTURES  
 BASED ON PAR



Gnd speed-KT	75	100	150	200	250	300
316' per NM	395	527	790	1053	1317	1580
292' per NM	365	486	729	972	1215	1458
237' per NM	296	395	592	790	987	1185

These SIDs require minimum climb gradients of  
 VANES 2M: 316' per NM (5.2%) up to 5000'.  
 VANES 2N: 237' per NM (3.9%) up to 7000'.  
 VANES 2T: 292' per NM (4.8%) up to 700'.  
 RWY 25: Visual climb is required up to 300'.

SID	RWY	ROUTING
VANES 2M	25	Climb on PAR R-262 to D6 PAR, turn RIGHT, intercept PAR R-264 to VANES, join airways B 34/M 601.
VANES 2N		Climb on PAR R-247 to D10 PAR, turn RIGHT, intercept PAR R-280 inbound to PAR, PAR R-100 to D5 PAR, turn RIGHT to PAR, turn LEFT, 235° track, intercept PAR R-264 to VANES, join airways B 34/M 601.
VANES 2T	07	Climb straight ahead to 700', turn LEFT, intercept PAR R-052 to D12 PAR, turn RIGHT to PAR, PAR R-264 to VANES, join airways B 34/M 601.

LGRP/RHO  
 DIAGORAS

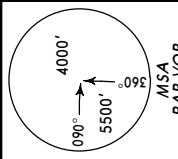


4 MAY 07 (10-3X8) Eff 10 May

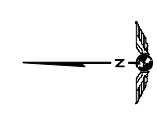
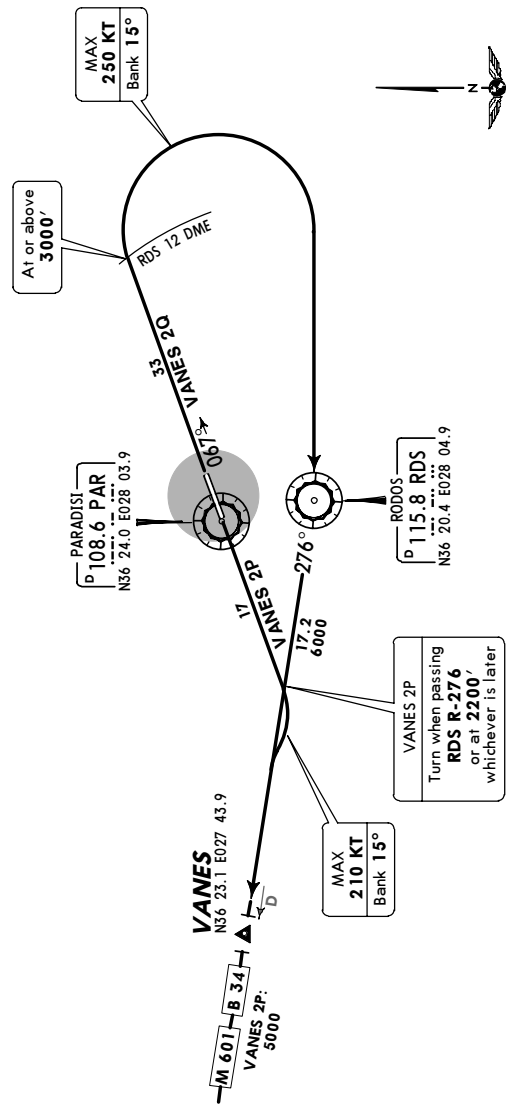
RODOS, GREECE

SID

Apt Elev 19'  
 Trans level: By ATC Trans alt: 6000'  
 When an altitude higher than Trans alt is designated, an equivalent FL shall be specified by ATC.



VANES 2P [VANE2P], VANES 2Q [VANE2Q]  
 RWYS 25, 07 DEPARTURES  
 BASED ON RDS  
 TO BE USED WHEN PAR UNSERVICEABLE



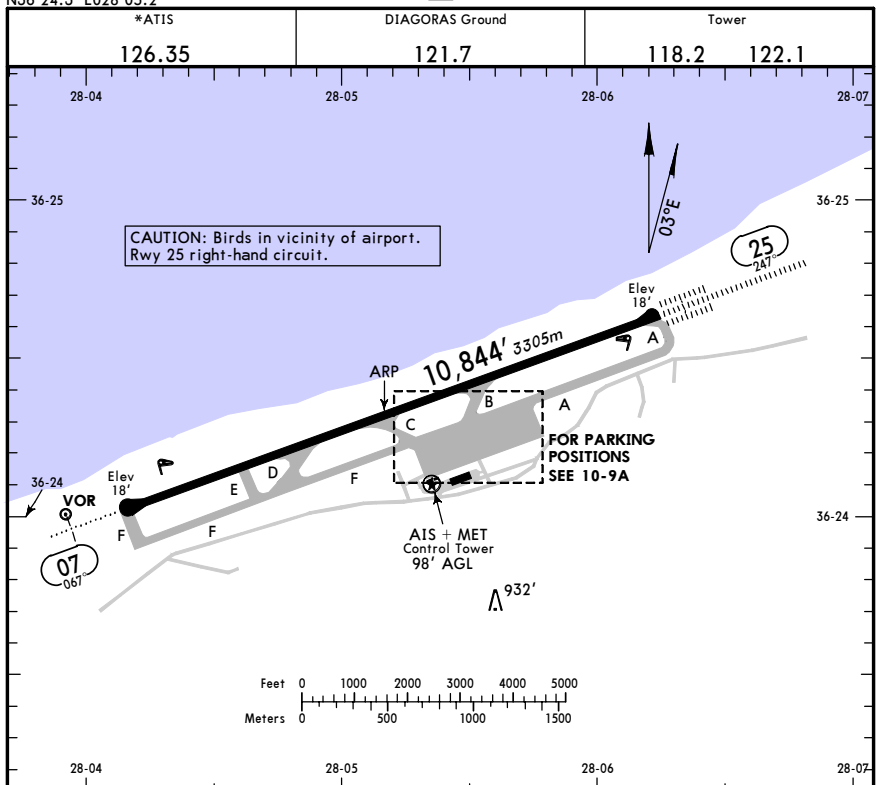
Gnd speed-KT	75	100	150	200	250	300
340' per NM	425	567	851	1134	1418	1701
334' per NM	418	557	835	1114	1392	1671

These SIDs require minimum climb gradients of  
 VANES 2P: 340' per NM (5.6%) up to MEA.  
 VANES 2Q: 334' per NM (5.5%) up to 3000'.  
 RWY 25: Visual climb is required up to 300'.

SID	RWY	ROUTING
VANES 2P	25	Climb straight ahead, when passing RDS R-276 or at 2200', whichever is later, turn RIGHT, intercept RDS R-276 to VANES, join airways B 34/M 601.
VANES 2Q	07	Climb straight ahead on 067° track, at RDS 12 DME and at or above 3000' turn RIGHT to RDS, turn RIGHT, RDS R-276 to VANES, join airways B 34/M 601.



**LGRP/RHO** **JEPPESEN** **RODOS, GREECE**  
 Apt Elev 19'  
 N36 24.3 E028 05.2 4 MAY 07 (10-9) Eff 10 May **DIAGORAS**



RWY	ADDITIONAL RUNWAY INFORMATION						USABLE LENGTHS		TAKE-OFF	WIDTH
	HIRL (60m)	ALS	PAPI-L (3.0°)	HST-C	RVR	Threshold	Glide Slope			
07									148'	
25							9532' 2905m		45m	

**JAR-OPS**

**TAKE-OFF I**

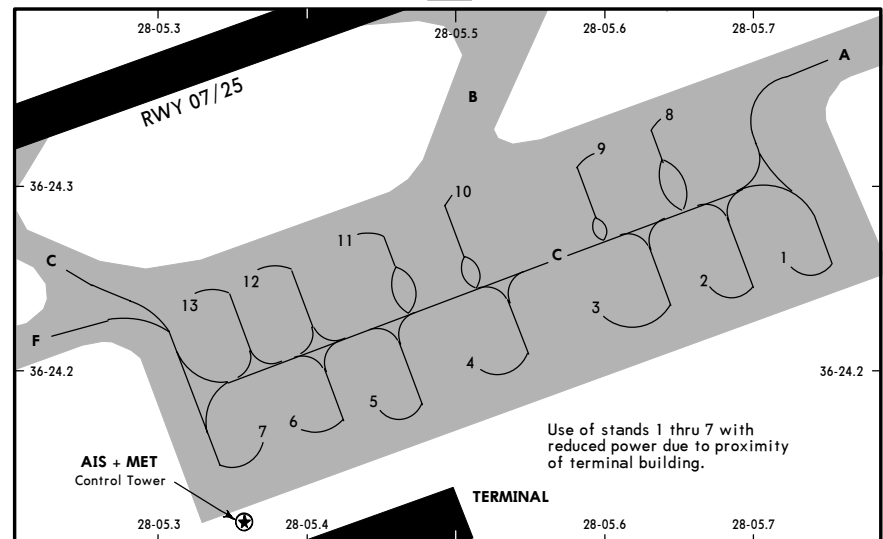
All Rwys

LVP must be in force

	RCLM (DAY only) or RL	RCLM (DAY only) or RL	NIL (DAY only)
A			
B	250m		
C		400m	500m
D	300m		

Operators applying U.S. Ops Specs: CL required below 300m.

**LGRP/RHO** **JEPPESEN** **RODOS, GREECE**  
 4 MAY 07 (10-9A) Eff 10 May **DIAGORAS**



**INS COORDINATES**

STAND No.	COORDINATES	STAND No.	COORDINATES
1	N36 24.3 E028 05.6	8	N36 24.3 E028 05.6
2	N36 24.2 E028 05.6	9	N36 24.3 E028 05.5
3, 4	N36 24.2 E028 05.5	10, 11	N36 24.3 E028 05.4
5, 6	N36 24.2 E028 05.4	12	N36 24.3 E028 05.3
7	N36 24.2 E028 05.3	13	N36 24.2 E028 05.3

**START-UP PROCEDURES**

Request start-up clearance when the aircraft doors are closed and when ready to start engines immediately. When the expected delay is less than 15 minutes at the holding position, acft will be cleared to start engines immediately.

**TURBULENCE IN THE APPROACH, TAKE-OFF AND CLIMB OUT AREAS**

- Exercise extreme caution when South or Southeasterly winds of more than 10-15 KT prevail as moderate or severe turbulence and wind shear may be encountered in the final apch and/or initial climb out areas (mainly RWY 07). More specifically the following phenomena affecting seriously the flight safety are observed:
  - The wind direction and speed at a given time vary along the runway (horizontal wind shear).
  - The wind direction and speed, at a given point of the runway, are continuously changing (turbulent wind shear).
  - Severe turbulence in the final apch, take-off and initial climb out areas.
- When the South or Southeasterly wind speed increases over 15 KT, landing and/or take-off are not recommended since a severe horizontal and turbulent wind shear may prevail at some intermediate point of the final apch and/or take-off and initial climb out areas.
- Pilots are urged to volunteer reports of wind shear to DIAGORAS Tower or Approach controllers as soon as possible, so that the pilots of following aircraft can be warned. It is suggested that pilots should report wind shear in the following format:
  - A simple warning of the presence of the wind shear, even if no further information can be given.
  - The altitude or altitude band, where the wind shear was encountered.
  - Details of the effects of the wind shear on the acft, i.e. airspeed gain or loss, vertical speed tendency, etc.

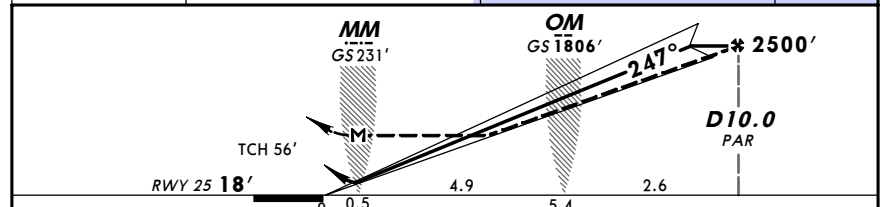
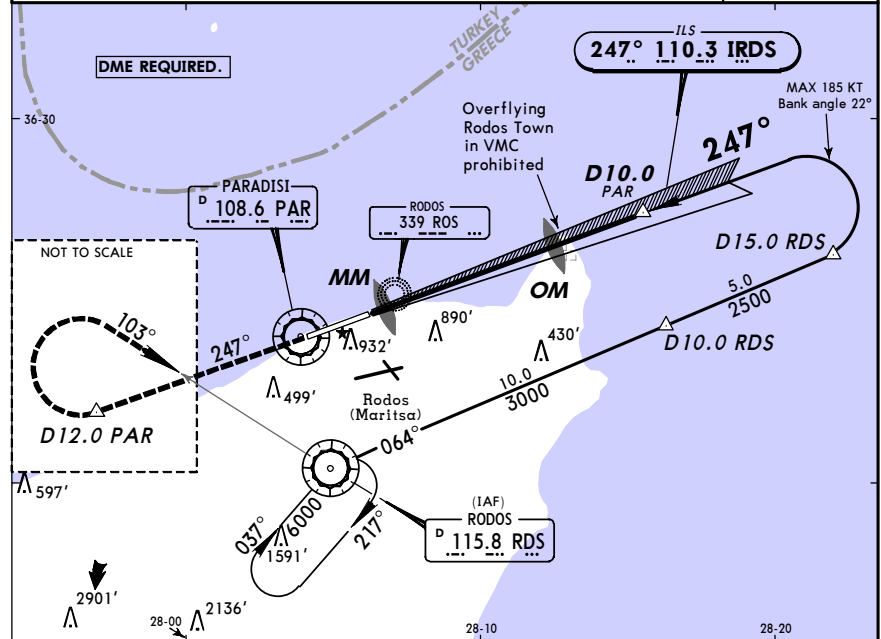
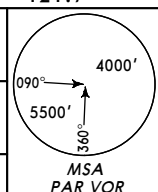
LGRP/RHO RODOS, GREECE  
 DIAGORAS ILS Z Rwy 25

JEPPESEN  
 4 MAY 07 (11-1) Eff 10 May

*ATIS 126.35		RODOS Approach (R) 118.25 120.6 122.1		DIAGORAS Tower 118.2 122.1		Ground 121.7
LOC IRDS 110.3	Final Apch Crs 247°	GS OM 1806' (1788')	ILS DA(H) Refer to Minimums	Apt Elev 19'	RWY 18'	

MISSED APCH: Climb STRAIGHT AHEAD to D12.0 PAR (3200' w/o PAR DME), then turn RIGHT (MAX 185 KT) to intercept and follow R-283 inbound to RDS VOR climbing to 6000' and hold.

Alt Set: hPa Rwy Elev: 1 hPa Trans level: By ATC Trans alt: 6000'  
 Do not mistake Rodos (Maritsa) airport 1.5 NM SE for Rodos (Diagoras) airport.



Gnd speed-Kts	70	90	100	120	140	160
ILS GS 3.00°	377	485	539	647	755	862
LOC Desc Grad 5.0%	354	456	506	608	709	810

JAR-OPS STRAIGHT-IN LANDING RWY 25				CIRCLE-TO-LAND			
ILS DA(H) C: 300' (282') AB: 220' (202') D: 340' (322')		LOC (GS out) MDA(H) 1100' (1082')		Not authorized South of airport			
FULL	ALS out	MM out	ALS out	Max Kts	MDA(H)	VIS	
A	RVR 600m	RVR 1200m	RVR 1500m	100	1100' (1081')	1500m	
B	RVR 600m	RVR 1000m	RVR 1500m	135	1100' (1081')	1600m	
C	RVR 650m	RVR 1200m	RVR 2000m	180	1100' (1081')	2400m	
D	RVR 800m	RVR 1800m	RVR 2000m	205	1100' (1081')	3600m	

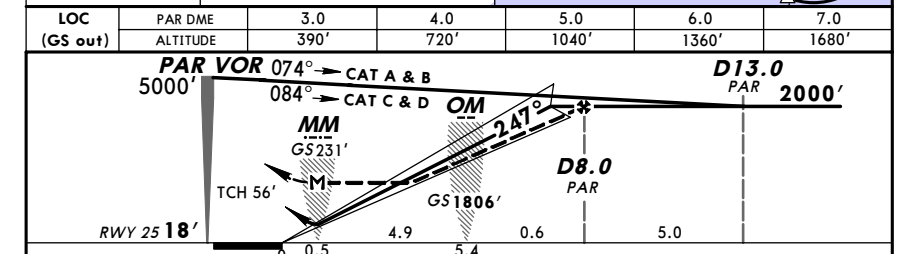
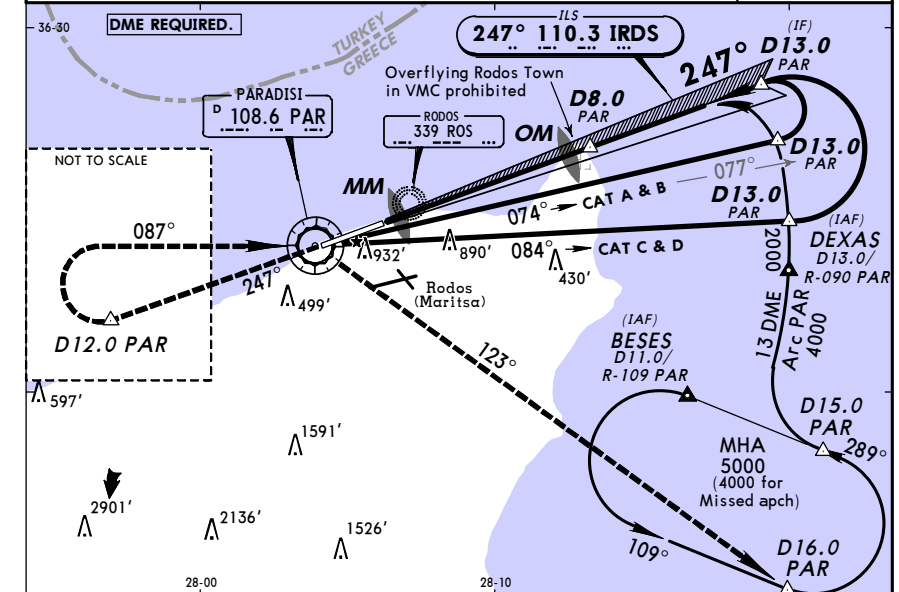
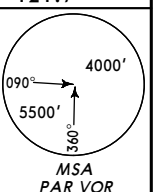
LGRP/RHO RODOS, GREECE  
 DIAGORAS ILS Y Rwy 25

JEPPESEN  
 4 MAY 07 (11-2) Eff 10 May

*ATIS 126.35		RODOS Approach (R) 118.25 120.6 122.1		DIAGORAS Tower 118.2 122.1		Ground 121.7
LOC IRDS 110.3	Final Apch Crs 247°	GS OM 1806' (1788')	ILS DA(H) Refer to Minimums	Apt Elev 19'	RWY 18'	

MISSED APCH: Climb STRAIGHT AHEAD to D12.0 PAR, then turn RIGHT (MAX 185 KT) to intercept and follow R-267 inbound to PAR VOR climbing to 4000'. Turn RIGHT to intercept and follow R-123 PAR to enter holding.

Alt Set: hPa Rwy Elev: 1 hPa Trans level: By ATC Trans alt: 6000'  
 Do not mistake Rodos (Maritsa) airport 1.5 NM SE for Rodos (Diagoras) airport.



Gnd speed-Kts	70	90	100	120	140	160
ILS GS 3.00°	377	485	539	647	755	862
LOC Desc Grad 5.3%	376	483	537	644	751	859

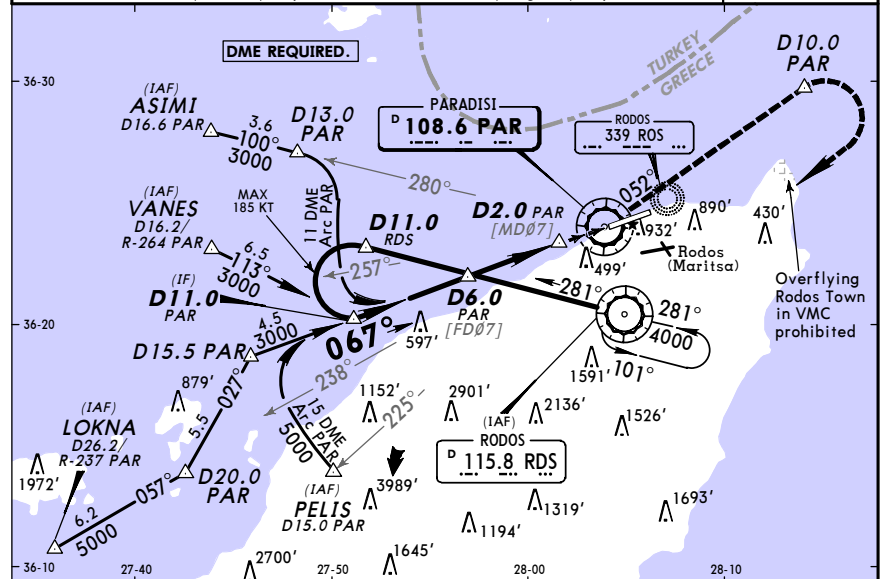
JAR-OPS STRAIGHT-IN LANDING RWY 25				CIRCLE-TO-LAND			
ILS DA(H) C: 300' (282') AB: 220' (202') D: 340' (322')		LOC (GS out) MDA(H) 1100' (1082')		Not authorized South of airport			
FULL	ALS out	MM out	ALS out	Max Kts	MDA(H)	VIS	
A	RVR 600m	RVR 1200m	RVR 1500m	100	1100' (1081')	1500m	
B	RVR 600m	RVR 1000m	RVR 1500m	135	1100' (1081')	1600m	
C	RVR 650m	RVR 1200m	RVR 2000m	180	1100' (1081')	2400m	
D	RVR 800m	RVR 1800m	RVR 2000m	205	1100' (1081')	3600m	

LGRP/RHO  
 DIAGORAS

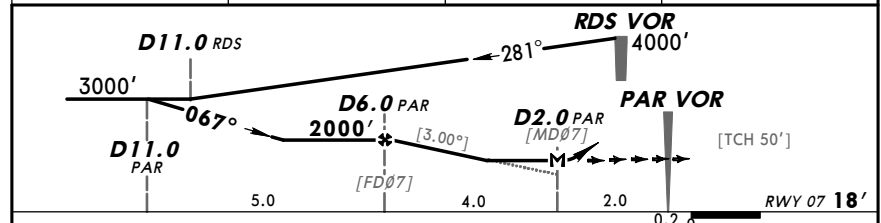
JEPPESEN  
 2 NOV 07 (13-1)

RODOS, GREECE  
 VOR Z Rwy 07

*ATIS		RODOS Approach (R)			DIAGORAS Tower		Ground
126.35		118.25	120.6	122.1	118.2	122.1	121.7
VOR PAR	Final Apch Crs	Minimum Alt	MDA(H)	Apt Elev 19'			
108.6	067°	D6.0 PAR 2000' (1982')	1100' (1082')	RWY 18'			
Alt Set: hPa		Apt Elev: 1 hPa	Trans level: By ATC		Trans alt: 6000'		
Do not mistake Rodos (Maritsa) airport		1.5 NM SE for Rodos (Diagoras) airport.		MSA PAR VOR			



PAR DME	5.0	4.0	3.0
ALTITUDE	1690'	1370'	1060'



Gnd speed-Kts	70	90	100	120	140	160	ALS	PAR	D10.0	PAR	
Descent Gradient	5.24%	or					3.00%	PAPI	108.6	108.6	108.6
Descent angle	[3.00°]										
MAP at D2.0 PAR	MAP at D2.0 PAR										

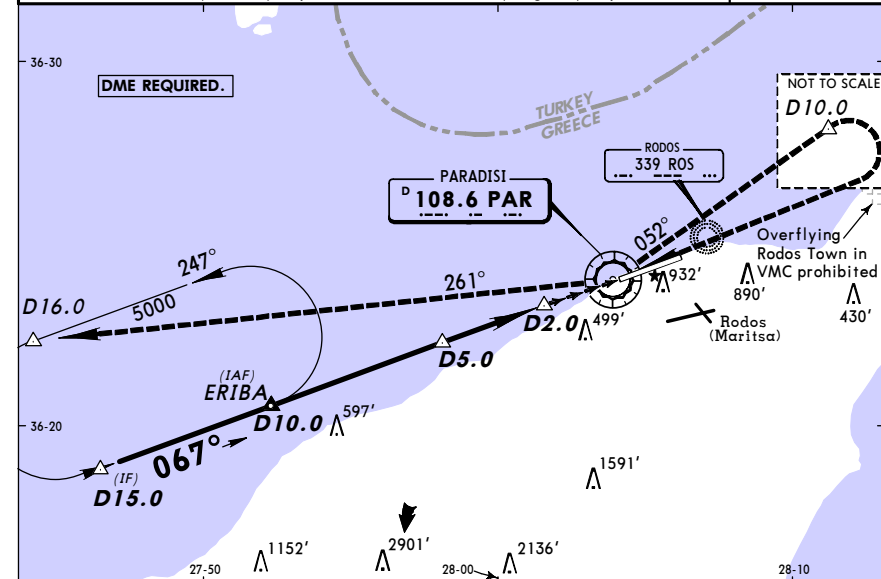
JAR-OPS STRAIGHT-IN LANDING RWY 07			CIRCLE-TO-LAND		
MDA(H) 1100' (1082')			Not authorized South of airport		
ALS out			Max Kts	MDA(H)	VIS
A	RVR 1500m		100	1100' (1081')	1500m
B	RVR 1500m		135	1100' (1081')	1600m
C	RVR 2000m		180	1100' (1081')	2400m
D	RVR 2000m		205	1100' (1081')	3600m

LGRP/RHO  
 DIAGORAS

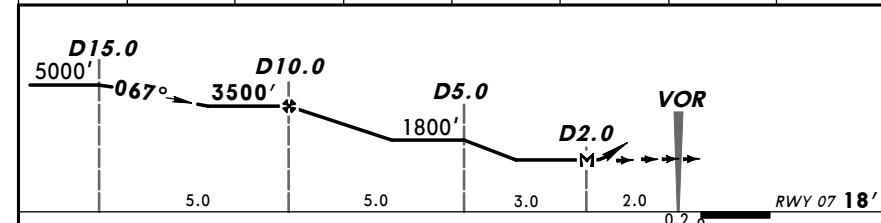
JEPPESEN  
 2 NOV 07 (13-2)

RODOS, GREECE  
 VOR Y Rwy 07

*ATIS		RODOS Approach (R)			DIAGORAS Tower		Ground
126.35		118.25	120.6	122.1	118.2	122.1	121.7
VOR PAR	Final Apch Crs	Minimum Alt	MDA(H)	Apt Elev 19'			
108.6	067°	D10.0 3500' (3482')	1100' (1082')	RWY 18'			
Alt Set: hPa		Apt Elev: 1 hPa	Trans level: By ATC		Trans alt: 6000'		
Do not mistake Rodos (Maritsa) airport		1.5 NM SE for Rodos (Diagoras) airport.		MSA PAR VOR			



PAR DME	9.0	8.0	7.0	6.0	5.0	4.0	3.0
ALTITUDE	3160'	2820'	2480'	2140'	1800'	1460'	1120'



Gnd speed-Kts	70	90	100	120	140	160	ALS	PAR	D10.0	PAR
Descent Gradient	5.6%	397	510	567	681	794	907	PAPI	108.6	108.6
MAP at D2.0	MAP at D2.0									

JAR-OPS STRAIGHT-IN LANDING RWY 07			CIRCLE-TO-LAND		
MDA(H) 1100' (1082')			Not authorized South of airport		
ALS out			Max Kts	MDA(H)	VIS
A	RVR 1500m		100	1100' (1081')	1500m
B	RVR 1500m		135	1100' (1081')	1600m
C	RVR 2000m		180	1100' (1081')	2400m
D	RVR 2000m		205	1100' (1081')	3600m

LGRP/RHO  
 DIAGORAS

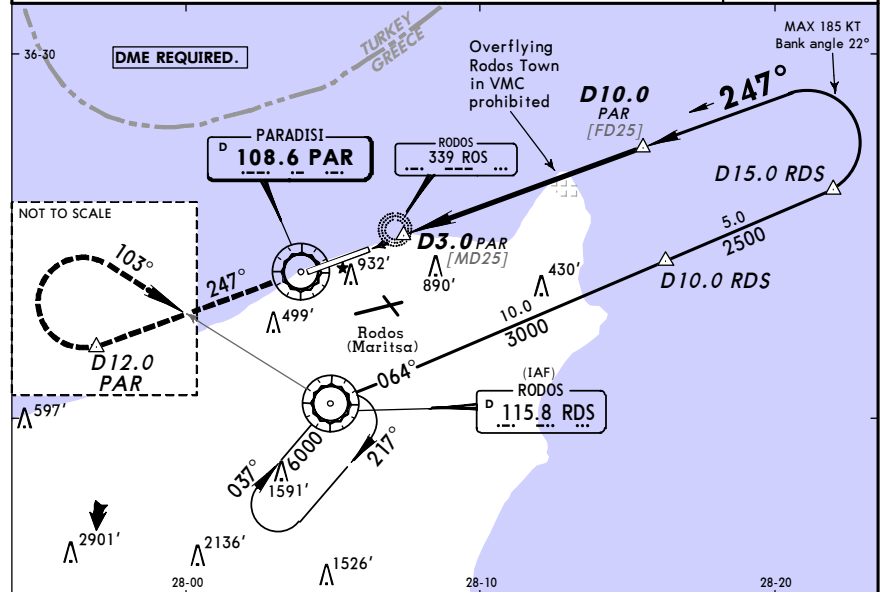
JEPPESEN  
 4 MAY 07 (13-3) Eff 10 May

RODOS, GREECE  
 VOR Z Rwy 25

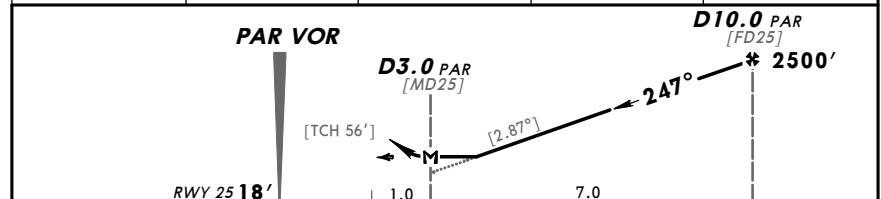
*ATIS 126.35		RODOS Approach (R) 118.25 120.6 122.1			DIAGORAS Tower 118.2 122.1		Ground 121.7
VOR PAR 108.6	Final Apt Crs 247°	Minimum Alt D10.0 PAR 2500' (2482')	MDA(H) 1100' (1082')	Apt Elev 19' RWY 18'			

MISSED APCH: Climb to PAR VOR, intercept R-247 PAR to D12.0 PAR, then turn RIGHT (MAX 185 KT) to intercept and follow R-283 inbound to RDS VOR climbing to 6000' and hold.

Alt Set: hPa Apt Elev: 1 hPa Trans level: By ATC Trans alt: 6000'  
 Do not mistake Rodos (Maritsa) airport 1.5 NM SE for Rodos (Diagoras) airport.



PAR DME	6.0	7.0	8.0	9.0
ALTITUDE	1280'	1590'	1890'	2200'



Gnd speed-Kts	70	90	100	120	140	160
Descent Gradient 5.00% or Descent angle [2.87°]	355	457	508	609	711	812

MAP at D3.0 PAR

JAR-OPS STRAIGHT-IN LANDING RWY 25			CIRCLE-TO-LAND		
MDA(H) 1100' (1082')			Not authorized South of airport		
	ALS out	Max Kts	MDA(H)	VIS	
A	RVR 1200m	100	1100' (1081')	1500m	
B	RVR 1400m	135	1100' (1081')	1600m	
C	RVR 1400m	180	1100' (1081')	2400m	
D	RVR 1800m	205	1100' (1081')	3600m	

LGRP/RHO  
 DIAGORAS

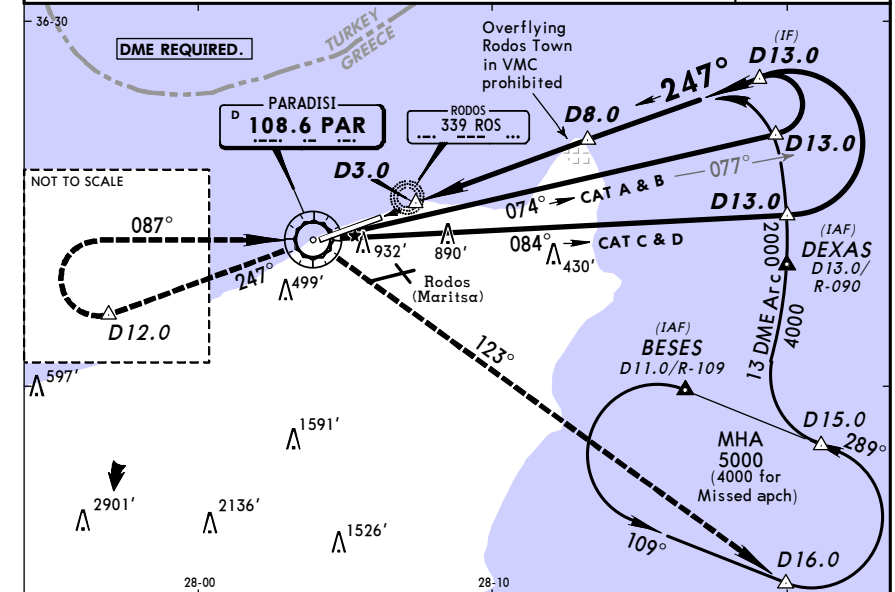
JEPPESEN  
 4 MAY 07 (13-4) Eff 10 May

RODOS, GREECE  
 VOR Y Rwy 25

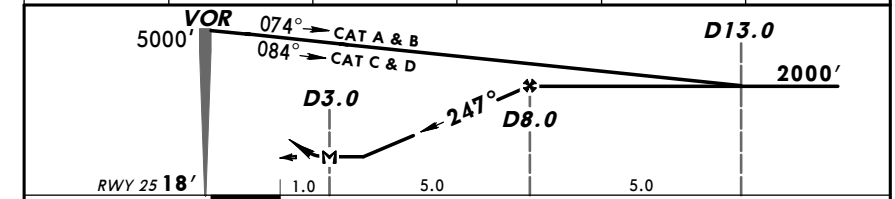
*ATIS 126.35		RODOS Approach (R) 118.25 120.6 122.1			DIAGORAS Tower 118.2 122.1		Ground 121.7
VOR PAR 108.6	Final Apt Crs 247°	Minimum Alt D8.0 2000' (1982')	MDA(H) 1100' (1082')	Apt Elev 19' RWY 18'			

MISSED APCH: Climb STRAIGHT AHEAD to PAR VOR, intercept and follow R-247 to D12.0, then turn RIGHT (MAX 185 KT) to intercept and follow R-087 to PAR VOR climbing to 4000'. Turn RIGHT to intercept and follow R-123 and enter holding.

Alt Set: hPa Apt Elev: 1 hPa Trans level: By ATC Trans alt: 6000'  
 Do not mistake Rodos (Maritsa) airport 1.5 NM SE for Rodos (Diagoras) airport.



PAR DME	3.0	4.0	5.0	6.0	7.0
ALTITUDE	390'	720'	1040'	1360'	1680'



Gnd speed-Kts	70	90	100	120	140	160
Descent Gradient 5.3% or Descent angle [2.87°]	376	483	537	644	751	859

MAP at D3.0

JAR-OPS STRAIGHT-IN LANDING RWY 25			CIRCLE-TO-LAND		
MDA(H) 1100' (1082')			Not authorized South of airport		
	ALS out	Max Kts	MDA(H)	VIS	
A	RVR 1200m	100	1100' (1081')	1500m	
B	RVR 1400m	135	1100' (1081')	1600m	
C	RVR 1400m	180	1100' (1081')	2400m	
D	RVR 1800m	205	1100' (1081')	3600m	