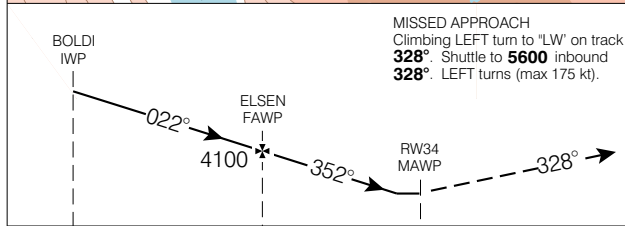
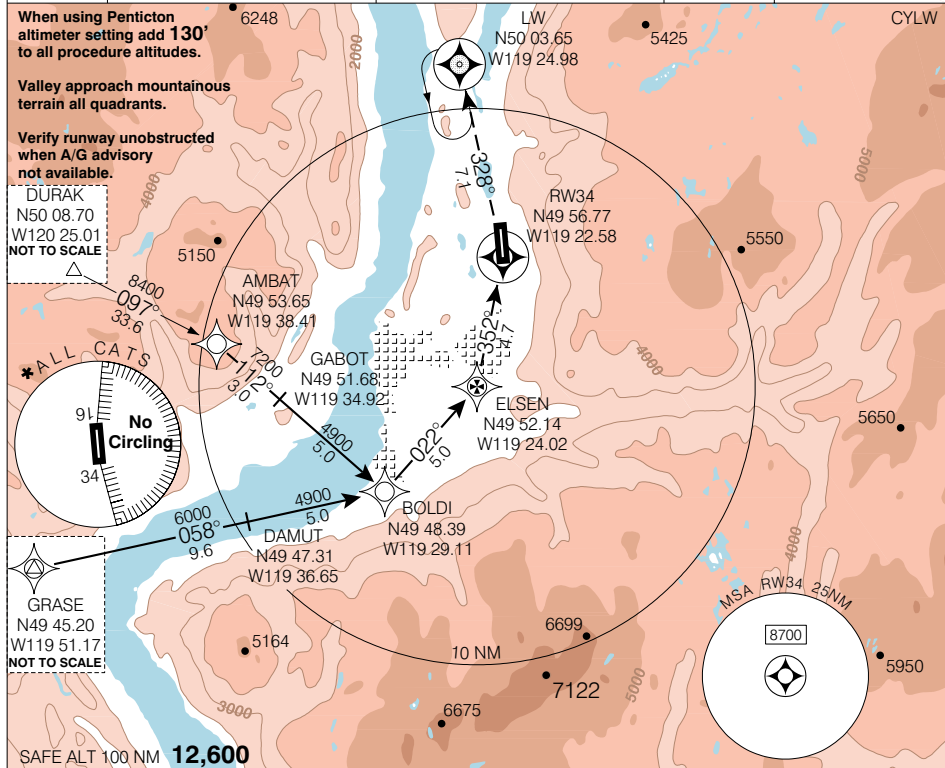


RNAV(GNSS) A

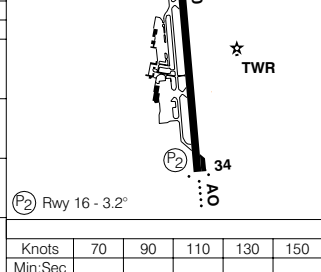
KELOWNA
KELOWNA BC

<p>ATIS 127.5</p>	<p>ARR/DEP VANCOUVER CENTRE 133.5 294.0</p>	<p>TWR 119.6 292.2 O/T PENTICTON RADIO 119.6 (MF 5 NM)</p>	<p>GND 121.7</p>	<p>ELEV 1409</p>
-----------------------	---	--	----------------------	------------------



DAY: Right hand circuits Rwy 34.
NIGHT: See Night Circuit Procedures.

CATEGORY	A	B	C	D
* CIRCLING	3560	(2151)	3	



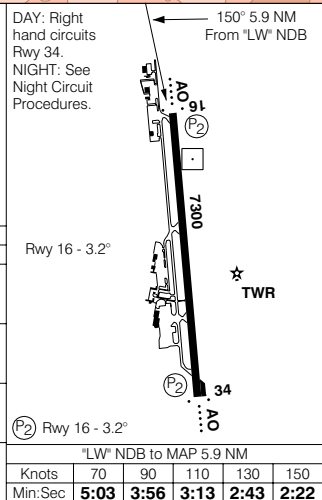
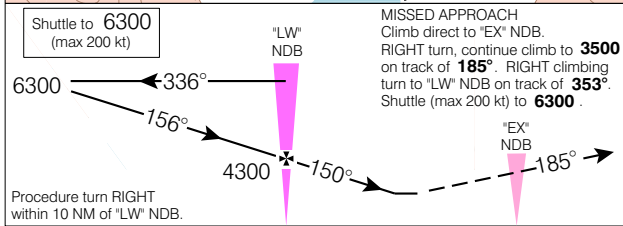
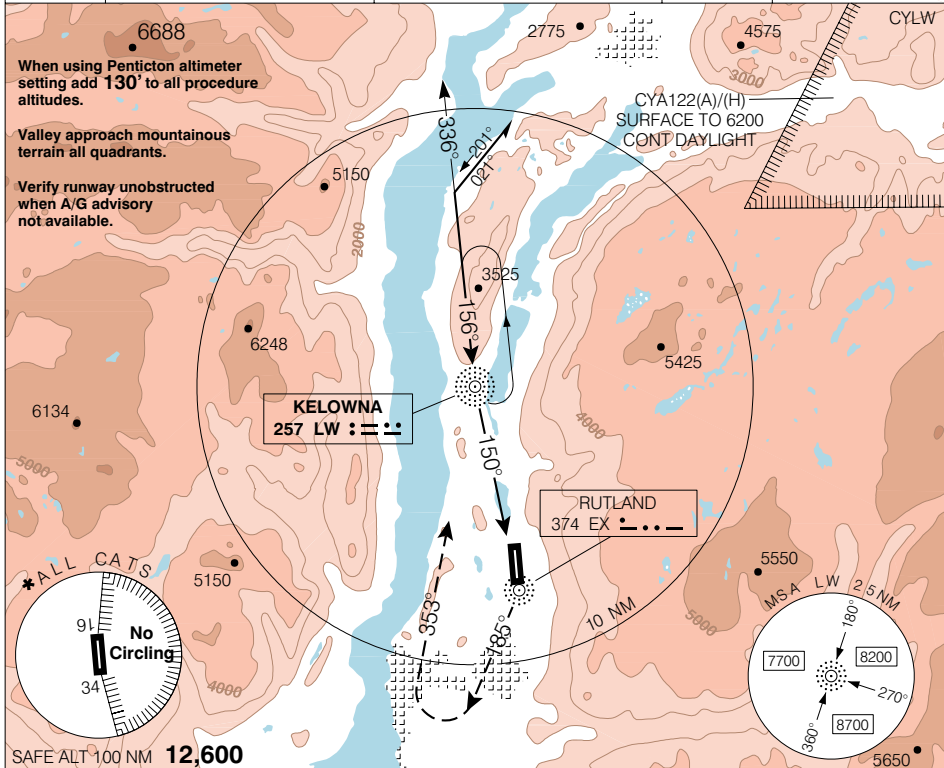
RNAV(GNSS) A	N49 57 22 W119 22 40	VAR 19° E (2001)	KELOWNA BC KELOWNA NAD83
EFF 13 APR 06	CHANGE: GPS to GNSS		

© 2006 Her Majesty The Queen in Right of Canada, Department of Natural Resources. All rights reserved. Source of Canadian Civil Aeronautical Data: © 2006 NAV CANADA. All rights reserved.

KELOWNA
KELOWNA BC

NDB B

<p>● ATIS 127.5</p>	<p>ARR/DEP VANCOUVER CENTRE 133.5 294.0</p>	<p>● TWR 119.6 292.2 O/T PENTICTON RADIO 119.6 (MF 5 NM)</p>	<p>● GND 121.7</p>	<p>ELEV 1409</p>
-------------------------	---	--	------------------------	------------------



CATEGORY	A	B	C	D
★ CIRCLING	2840	(1431)	3	

"LW" NDB to MAP 5.9 NM				
Knots	70	90	110	130 150
Min:Sec	5:03	3:56	3:13	2:43 2:22

NDB B

EFF 13 APR 06

CHANGE: Editorial

N49 57 22 W119 22 40

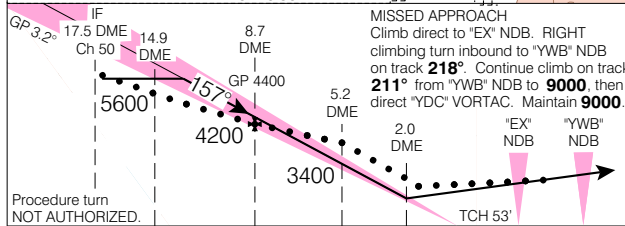
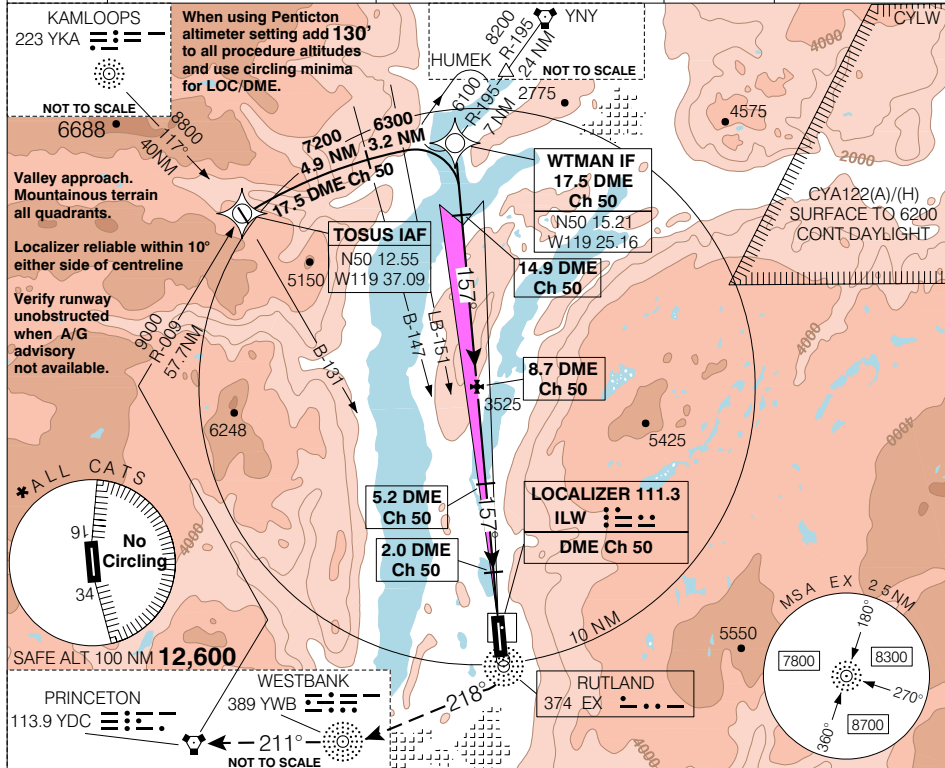
VAR 18° E

KELOWNA BC
KELOWNA
NAD83

KELOWNA
KELOWNA BC

ILS/DME 1 RWY 16

<p>ATIS 127.5</p>	<p>ARR/DEP VANCOUVER CENTRE 133.5 294.0</p>	<p>TWR 119.6 292.2 O/T PENTICTON RADIO 119.6 (MF 5 NM)</p>	<p>GND 121.7</p>	<p>ELEV 1409 TDZE 16 1409</p>
-----------------------	---	--	----------------------	-----------------------------------



DAY: Right hand circuits Rwy 34.
NIGHT: See Night Circuit Procedures.

Category	A	B	C	D
ILS/DME	2060	(651)	2	
LOC/DME	2520	(1111)	3	
* CIRCLING	2800	(1391)	3	

(P2) Rwy 16 - 3.2"

Knots	70	90	110	130	150
Min:Sec					

ILS/DME 1 RWY 16

N49 57 22 W119 22 40 VAR 18° E

KELOWNA BC
KELOWNA
NAD83

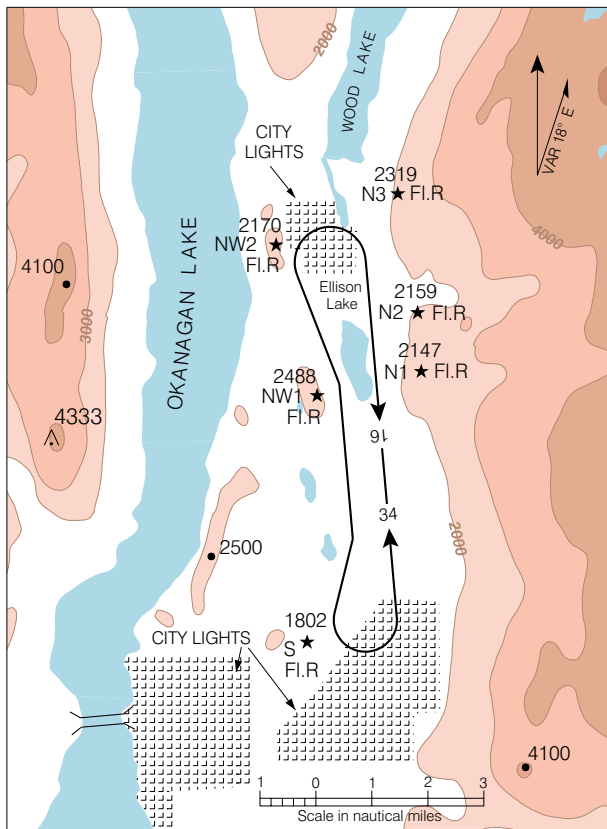
EFF 13 APR 06

CHANGE: Editorial

NIGHT CIRCUIT PROCEDURES

KELOWNA
KELOWNA BC

NIGHT CIRCUIT ALTITUDE - 3000'ASL



NOTES:

1. Recommend that only pilots familiar with the local area use this airport during hours of darkness.
2. Night operations not recommended unless all 6 hazard beacons are operating.
3. All turns to be completed within the perimeter of the hazard beacons.

NIGHT CIRCUIT PROCEDURES

EFF 13 APR 06

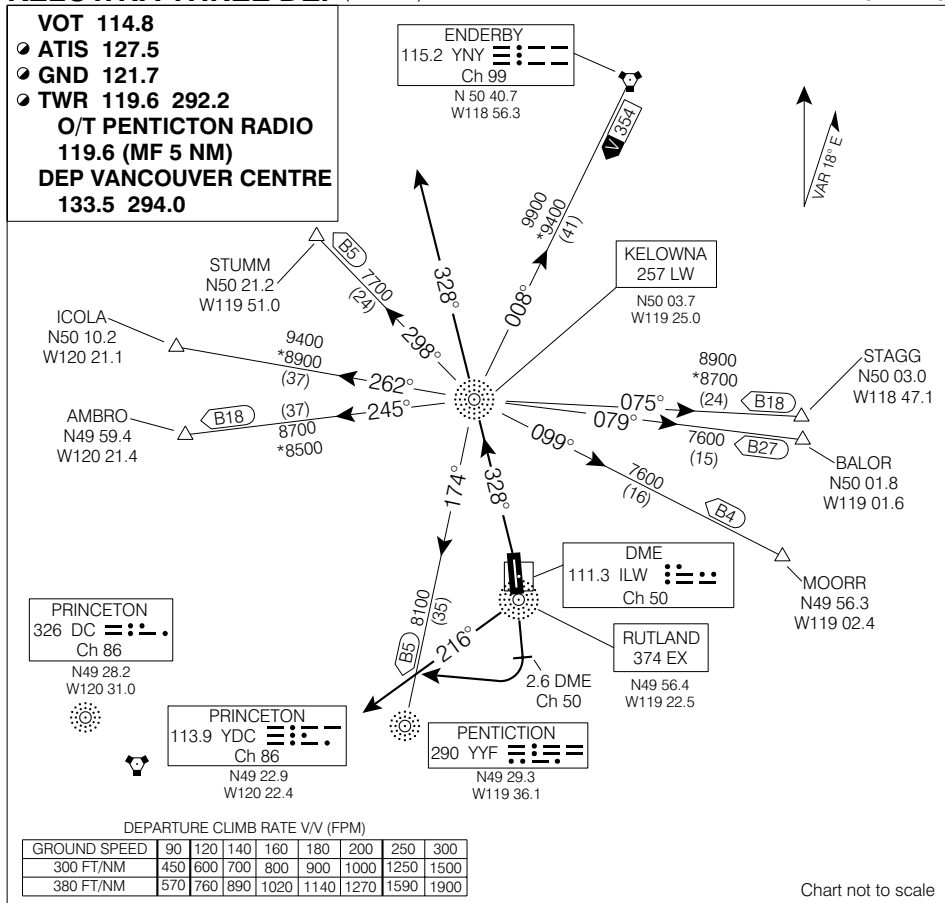
CHANGE: Editorial

KELOWNA BC
KELOWNA

SID (VECTOR)

KELOWNA THREE DEP (YLW 3.)

KELOWNA
KELOWNA BC



© 2006 Her Majesty The Queen in Right of Canada, Department of Natural Resources. All rights reserved

Source of Canadian Civil Aeronautical Data: © 2006 NAV CANADA. All rights reserved

Chart not to scale

DEPARTURE ROUTE DESCRIPTION

Runway 16: - ½ - Requires a minimum climb gradient of 300 ft/NM to 4600. Climb runway heading to 2.6 DME (Ch 50) at 2000 or above. RIGHT climbing turn to intercept track 216° from "EX" NDB. Climb to 9000 or as assigned. Contact Vancouver Centre after passing 4000. Expect radar vectors to filed/assigned route or depicted fix and clearance to flight planned altitude/flight level 5 minutes after departure.

Runway 34: - ½ - Requires a minimum climb gradient of 380 ft/NM to 4300. Climb on track 328° via "LW" NDB to 9000 or as assigned. Contact Vancouver Centre after passing 4000. Expect radar vectors to filed/assigned route and clearance to flight planned altitude/flight level 5 minutes after departure.

Note: Aircraft unable to meet the required climb gradient should refer to Kelowna Departure Procedure.

KELOWNA THREE DEP (YLW 3.)

EFF 13 APR 06 CHANGE: Editorial

KELOWNA BC
KELOWNA
NAD83

DEPARTURE PROCEDURE

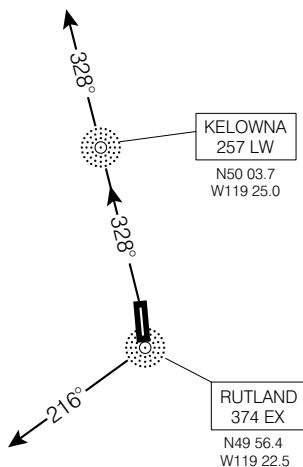
KELOWNA
KELOWNA BC**VOT 114.8**● **ATIS 127.5**● **GND 121.7**● **TWR 119.6 292.2****O/T PENTICTON RADIO****119.6 (MF 5 NM)****DEP VANCOUVER CENTRE****133.5 294.0**

Chart not to scale.

DEPARTURE ROUTE DESCRIPTION

Rutland Route: SPEC VIS - Climb visual west of airport so as to cross "EX" NDB at 3400 or above. Continue climb on track 216° from "EX" NDB to 9000 BPOC.

Winfield Route: SPEC VIS - Climb visual west of airport to 3200 then climb on track 328° via "LW" NDB to 9000 BPOC.

DEPARTURE PROCEDURE

CHANGE: Editorial

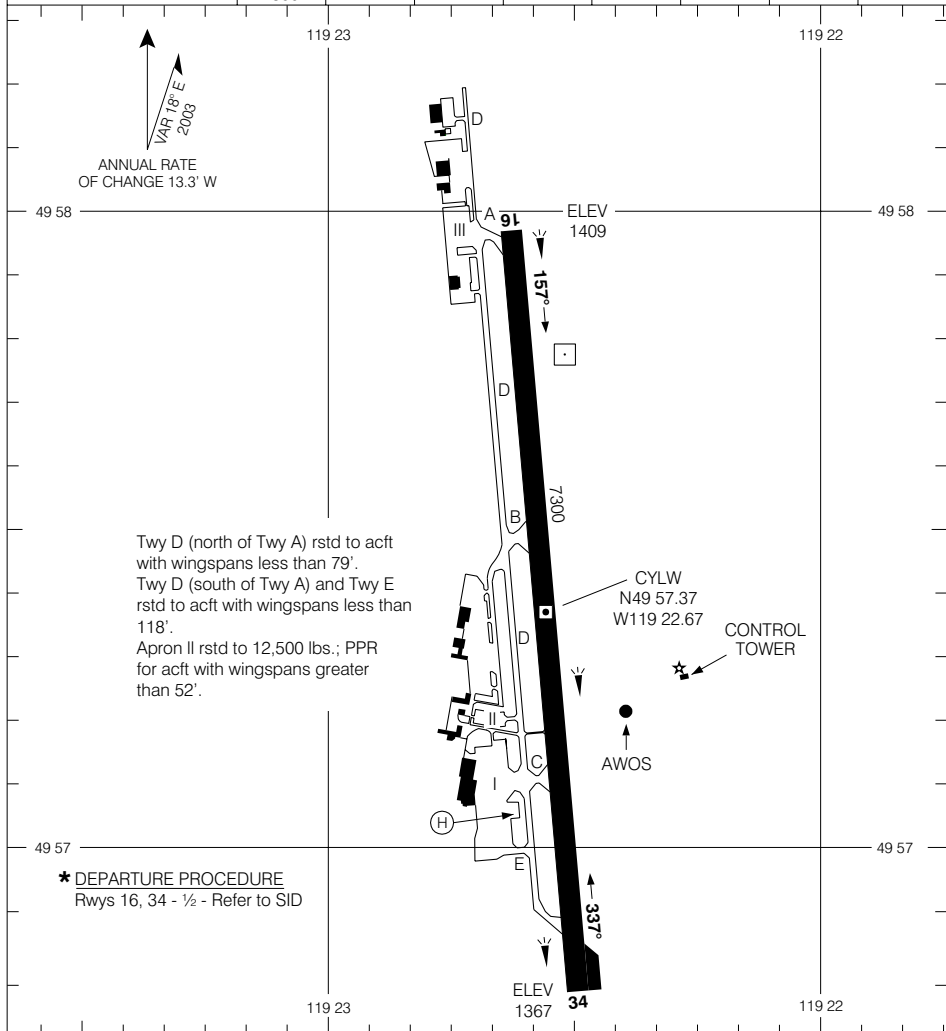
KELOWNA BC
KELOWNA
NAD83

KELOWNA
KELOWNA BC

AERODROME CHART

VOT 114.8	ATIS 127.5	GND 121.7	TWR 119.6 292.2 O/T PENTICTON RADIO 119.6 (MF 5 NM)	DEP VANCOUVER CENTRE 133.5 294.0
---------------------	----------------------	---------------------	--	---

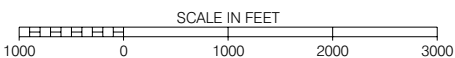
DECLARED DISTANCES	16	34						
	TORA	7300	7300					
TODA	8300	8300						
ASDA	7300	7300						
LDA	7300	7300						



Twy D (north of Twy A) rstd to acct with wingspans less than 79'.
Twy D (south of Twy A) and Twy E rstd to acct with wingspans less than 118'.
Apron II rstd to 12,500 lbs.; PPR for acct with wingspans greater than 52'.

* DEPARTURE PROCEDURE
Rwys 16, 34 - 1/2 - Refer to SID

TAKE-OFF MINIMA
Rwys 16; 34: *



AERODROME CHART
EFF 13 APR 06

CHANGE: Editorial

KELOWNA BC
KELOWNA
NAD83

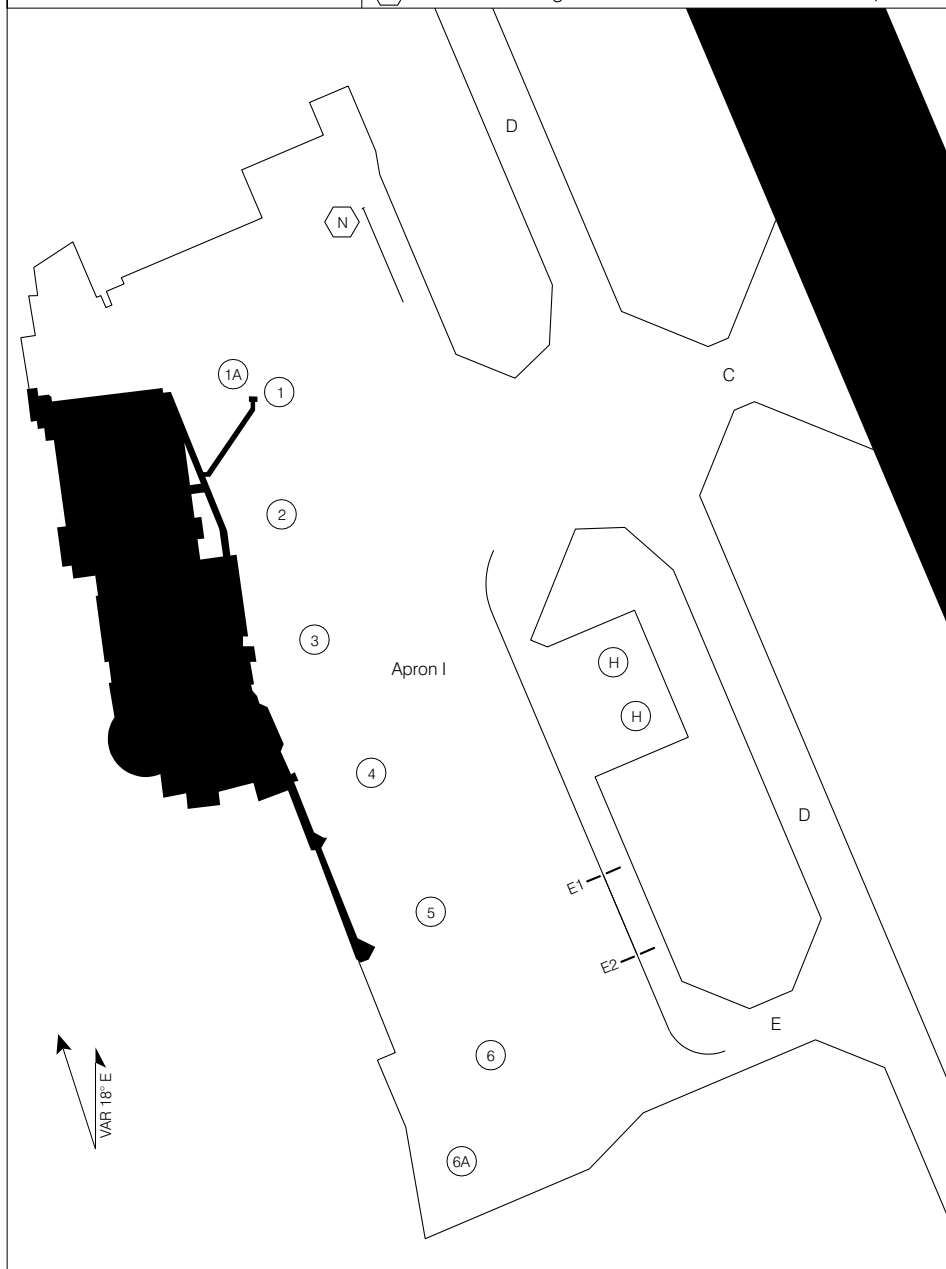
© 2006 Her Majesty The Queen in Right of Canada, Department of Natural Resources. All rights reserved. Source of Canadian Civil Aeronautical Data: © 2006 NAV CANADA. All rights reserved.

KELOWNA
KELOWNA BC

PARKING AREAS

**KELOWNA GROUND CONTROL
121.7**

- (5) Parking Position D Taxiway
- (N) Remote Parking Position E1 — Aircraft hold point



© 2006 Her Majesty The Queen in Right of Canada, Department of Natural Resources. All rights reserved

Source of Canadian Civil Aeronautical Data: © 2006 NAV CANADA. All rights reserved

PARKING AREAS
EFF 13 APR 06

CHANGE: Editorial

KELOWNA BC
KELOWNA
NAD83 ♦